



SDHQ Motorsports
190 S McQueen Rd
Ste 109 Gilbert, AZ 85233
Phone: 480-633-2929

Product Packing List

Product: SDHQ-31-1206-G3

Description: 03-09 Dodge HD A-Pillar Light Mounts

- | | | |
|-------|--|-------------------|
| _____ | (1) Driver Side Mount | SDHQ-31-1206-G3-A |
| _____ | (1) Driver Side Support Bracket | SDHQ-31-1206-G3-B |
| _____ | (1) Passenger Side Mount | SDHQ-31-1206-G3-C |
| _____ | (1) Passenger Side Support Bracket | SDHQ-31-1206-G3-D |
| _____ | (1) Hardware Package | SDHQ-31-1206-G3-E |
| _____ | (2) 3/8" - 16 x 1" S.S. Flathead Bolts | |
| _____ | (2) 3/8" - 16 S.S. Lock Nuts | |
| _____ | (2) 3/8" S.S. Washers | |
| _____ | (2) 5/16" - 18 x 1" S.S. Button Head Bolts | |
| _____ | (2) 5/16" - 18 S.S. Lock Nuts | |
| _____ | (4) 5/16" S.S. Washers | |
| _____ | (2) Push-In Zip Ties | |

Inspected and Packaged By: _____ Date: _____

For questions or help with the installation, please call SDHQ Offroad @ 480-633-2929
Mon.-Fri. 8:00am-5:30pm and Sat. 8:00am-3:30pm Arizona Time. www.sdhqoffroad.com

**For questions or help with the installation, please call SDHQ Offroad @ 480-633-2929
Mon.–Fri. 8:00am–5:30pm and Sat. 8:00am–3:30pm Arizona Time. www.sdhqoffroad.com**



SDHQ Motorsports
 190 S McQueen Rd
 Ste 109 Gilbert, AZ 85233
 Phone: 480-633-2929

INSTALLATION INSTRUCTIONS

Product: SDHQ-31-1206-G3

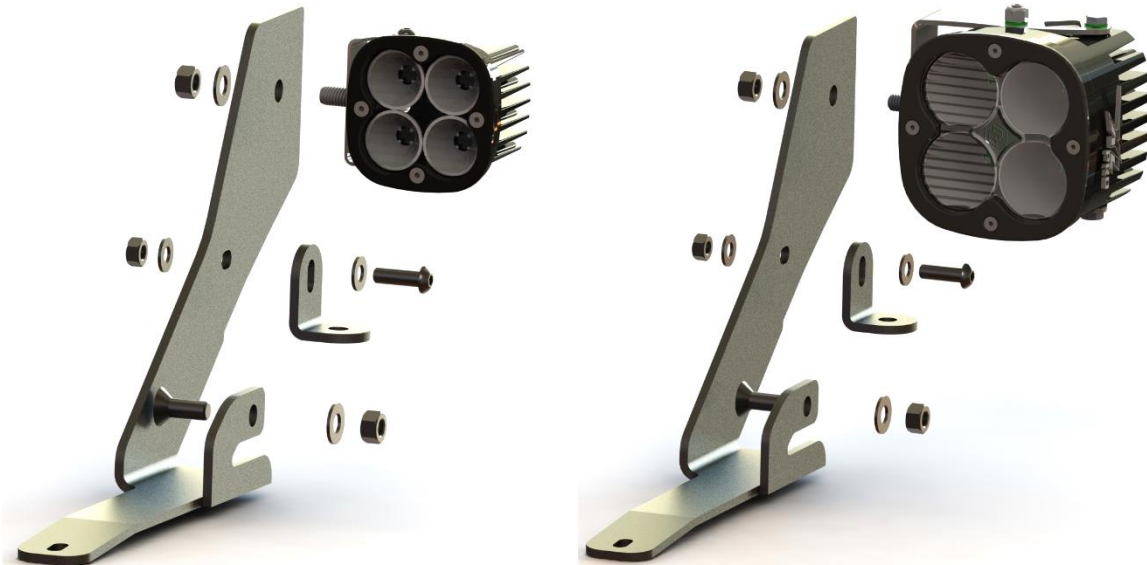
Description: 2003-2009 Dodge HD A-Pillar Light Mounts



<u>Parts List</u>	<u>Hardware List</u>	<u>Required Tools</u>
(1) Driver Side Mount SDHQ-31-1206-G3-A (1) Support Bracket SDHQ-31-1206-G3-B (1) Passenger Side Mount SDHQ-31-1206-G3-C (1) Support Bracket SDHQ-31-1206-G3-D (1) Hardware Package SDHQ-31-1206-G3-E	(2) 3/8" x 1" S.S. flathead Bolts (2) 3/8" Stainless Steel Lock Nuts (2) 3/8" Stainless Steel Washers (2) 5/16"-18 x 1" S.S. Button Head Bolts (2) 5/16"-18 S.S. Ny-lock Nuts (4) 5/16" S.S. Washers (2) Push-In Zip Ties	10 mm wrench / socket 7/32" Allen Wrench 9/16" Wrench / Socket Body Saw or Hacksaw Flat head screw driver Tape Measure or Ruler Masking Tape

Tech Notes

No Drilling Required
 Bolts into Factory Hood Hinge
 Minor Trimming of the Plastic Wiper Cowl and Inner Fender
 Revised Version has an extra attachment point and holds a 6.7" Vision X Light Cannon



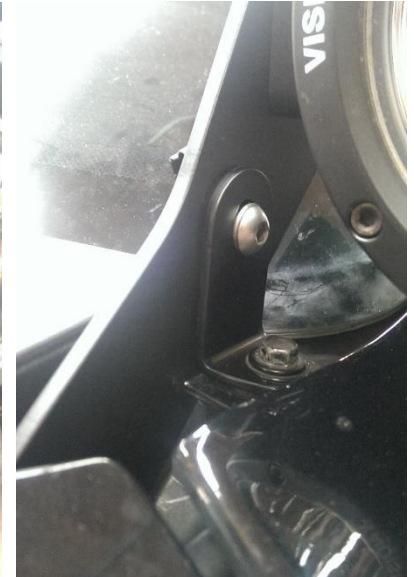
*****READ ALL INSTRUCTIONS THOROUGHLY FROM START TO FINISH BEFORE BEGINNING INSTALLATION! *****

Installation Instructions:

1. While not absolutely necessary, it is recommended to apply masking tape to the edge of the hood and fender where we will be working to prevent accidental paint damage.
2. Raise windshield wiper arms and remove them by pulling the small tab on the bottom out while lifting the arm off of the shaft.
3. Remove the screws holding the plastic wiper cowl trim on, and remove.
4. Locate the 10mm fender bolt that is closest to the hood hinge and remove. Grab the driver side A-Pillar Light Bracket, shown above with lights facing the front of the vehicle. Insert the Driver Side mount through the opening under the hood where the plastic cowl was. Align the hook style tab with the depression in the hood hinge bracket.
5. Thread the factory fender bolt back in through the mount and leave loose for now. Align the hole in the hood hinge mount with the hole in Driver Side Mount. Insert the 3/8" flat head bolt from the inside with the nut and washer on the outside. Do not fully tighten.
 *Note: You may have to trim back the inner edge of the fender to clear the 3/8" Nut.



6. Locate the 10mm bolt that attaches the top of the fender to the hood hinge bracket and remove it. Install the Support Bracket using this bolt, and thread the 5/16" Stainless Steel hardware provided through the Support Bracket and the Slot in the Driver Side Mount.



7. Align Mount so that it is parallel with the truck and tighten down all the hardware.
8. Now to cut the plastic wiper cowl:
9. Now Install your Lights, Wire, and Enjoy!



*****Double check all hardware is installed correctly and tight*****

*****Re-torque ALL bolts after 100 miles*****



190 S McQueen Rd
Ste 109 Gilbert, AZ 85233
Phone: 480-633-2929 | Fax: 480-633-1791
www.sdhqoffroad.com

Follow us on:



Facebook



Instagram

For questions or help with the installation, please call SDHQ Offroad @ 480-633-2929
Mon.–Fri. 8:00am–5:30pm and Sat. 8:00am–3:30pm Arizona Time. www.sdhqoffroad.com