



SDHQ Motorsports
190 S McQueen Rd
Ste 109 Gilbert, AZ 85233
Phone: 480-633-2929

Product Packing List

Product: *SDHQ-30-1141-G4*

Description: **2010-18 RAM 1500/2500/3500 Switch
Pros Power Module Mounts**

_____ (1) SDHQ RAM Power Module Mount	SDHQ-30-1141-G4-A
_____ (1) Hardware Package	SDHQ-30-1141-G4-B
_____ (2) 1/4" - 20 x 3/4" S.S. Button Head Bolts	
_____ (2) 1/4" ID x 1 1/4" OD S.S. Washers	
_____ (2) 1/4" S.S. Washer	
_____ (2) 1/4" - 20 S.S. Nylock Nuts	

Inspected and Packaged By: _____ **Date:** _____

For questions or help with the installation, please call SDHQ Offroad @ 480-633-2929
Mon.-Fri. 8:00am-5:30pm and Sat. 8:00am-3:30pm Arizona Time. www.sdhqoffroad.com



SDHQ Motorsports
190 S McQueen Rd
Ste 109 Gilbert, AZ 85233
Phone: 480-633-2929

INSTALLATION INSTRUCTIONS

Product: SDHQ-30-1141-G4

Description: 2010-18 RAM 1500/2500/3500 Switch
Pros Power Module Mounts



Parts List	Hardware List	Required Tools
(1) SDHQ RAM Power Module Mount SDHQ-30-1141-G4-A (1) Hardware Package SDHQ-30-1141-G4-B	(2) 1/4" - 20 x 3/4" S.S. Button Head Bolts (2) 1/4" ID x 1 1/4" OD S.S. Washers (2) 1/4" S.S. Washer (2) 1/4" - 20 S.S. Nylock Nuts	7/16" Socket/Wrench 5/32" Allen Key
Tech Notes		
Use anti-seize on all stainless steel hardware. Make sure crimps are tight to avoid damage and fire hazard. Approx. Install Time: 30 Minutes (not including wiring)		

READ ALL INSTRUCTIONS THOROUGHLY FROM START TO FINISH BEFORE BEGINNING INSTALLATION!

For questions or help with the installation, please call SDHQ Offroad @ 480-633-2929
Mon.-Fri. 8:00am-5:30pm and Sat. 8:00am-3:30pm Arizona Time. www.sdhqoffroad.com



Installation Instructions:

1. Unbox all parts and familiarize yourself with everything.
2. Place the Switch Pros Power Module on top the SDHQ Mount. Secure the Power Module to the SDHQ Mount using the hardware Switch Pros provided.

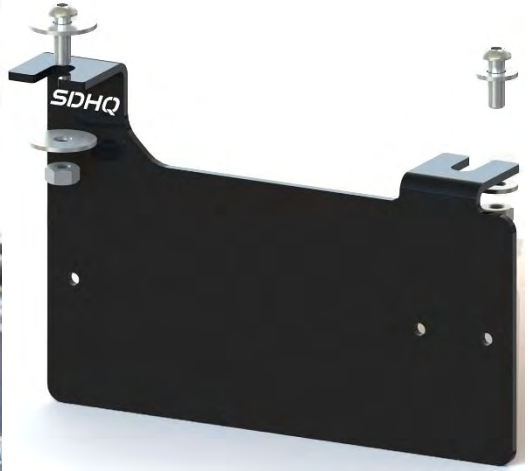


3. On the top of the driver side fire wall remove the plastic clip holding down the cowling.



For questions or help with the installation, please call SDHQ Offroad @ 480-633-2929
Mon.–Fri. 8:00am–5:30pm and Sat. 8:00am–3:30pm Arizona Time. www.sdhqoffroad.com

4. Insert (1) 1/4" bolt with oversized washer through the hole closest to the engine and secure with (1) oversized washer and nylock nut. Repeat this for the other hole with the standard sized washers. See diagram below. Leave enough room to slide the mount in place.



5. Slide the mount in place rotating counter-clockwise. Once aligned, tighten down the bolts using a 5/32" allen key and a 7/16" wrench.



6. Install is complete! Enjoy your SDHQ mounted Switch Pros Power Module. Continue with wiring.

Wiring:

Once the Switch-Pros power module is mounted, but BEFORE it is connected to anything else, do the following:

1. Reinstall battery (if battery was removed during installation), and secure factory connections. Start vehicle and confirm that battery is properly installed, connected and grounded.
2. Connect the Switch-Pros Ground wire lug to the negative terminal on the battery (grounding elsewhere will not properly filter noise and will void your product warranty).
3. Plug the 16-pin harness into the power module; be sure it locks in.
4. Connect the red Battery Cable to the positive terminal on the battery. Tighten down both ends, to prevent lug from rotating and possibly causing friction or spark.

*****Double check all hardware is installed correctly and tight*****

*****Re-torque ALL bolts after 100 miles*****



190 S McQueen Rd
Ste 109 Gilbert, AZ 85233
Phone: 480-633-2929 | Fax: 480-633-1791
www.sdhqoffroad.com

Follow us on:



Facebook



Instagram

For questions or help with the installation, please call SDHQ Offroad @ 480-633-2929
Mon.–Fri. 8:00am–5:30pm and Sat. 8:00am–3:30pm Arizona Time. www.sdhqoffroad.com