



SDHQ Motorsports
190 S McQueen Rd
Ste 109 Gilbert, AZ 85233
www.SDHQoffroad.com

Product Packing List

Product: SDHQ-23-3003-JK

Description: 2007-2017 Jeep Wrangler JK/JKU Complete Billet
Battery Terminal Kit

_____ (1) SDHQ Complete Billet Battery Terminal Kit SDHQ-02-3003-C2

Inspected and Packaged By: _____ Date: _____

For questions or help with the installation, please email help@sdhqoffroad.com
Mon.-Fri. 8:00am-5:30pm and Sat. 8:00am-3:30pm Arizona Time. www.sdhqoffroad.com

Included in **SDHQ-02-3003-C2**:

- (1) SDHQ Billet Positive Battery Terminal
- (1) SDHQ Billet Negative Battery Terminal
- (1) SDHQ Negative Terminal Stud
- (1) Hardware Package
 - (1) Positive Battery Protective Boot
 - (1) Negative Battery Protective Boot
 - (1) Positive Terminal Post Washer
 - (1) Negative Terminal Post Washer
 - (2) 5/16" - 18 x 1 1/2" Battery Terminal Bolt
 - (2) 5/16" - 18 Battery Shoulder Nut
 - (4) 1/4" - 20 x 3/4" S.S. Hex Head Bolt
 - (4) 1/4" S.S. Washer
 - (2) 5/16" - 18 x 1" S.S. Hex Head Bolt
 - (2) 5/16" S.S. Washer
 - (2) 3/8" - 16 x 2" S.S. Hex Head Bolt
 - (4) 3/8" S.S. Washers
 - (2) 3/8" - 16 S.S. Nuts
 - (1) Small Tube of Anti-Seize

SDHQ-02-3003-T2-P-Rev2
SDHQ-02-3003-T2-N-Rev2
SDHQ-02-3003-T2-A
SDHQ-02-3003-T2-B

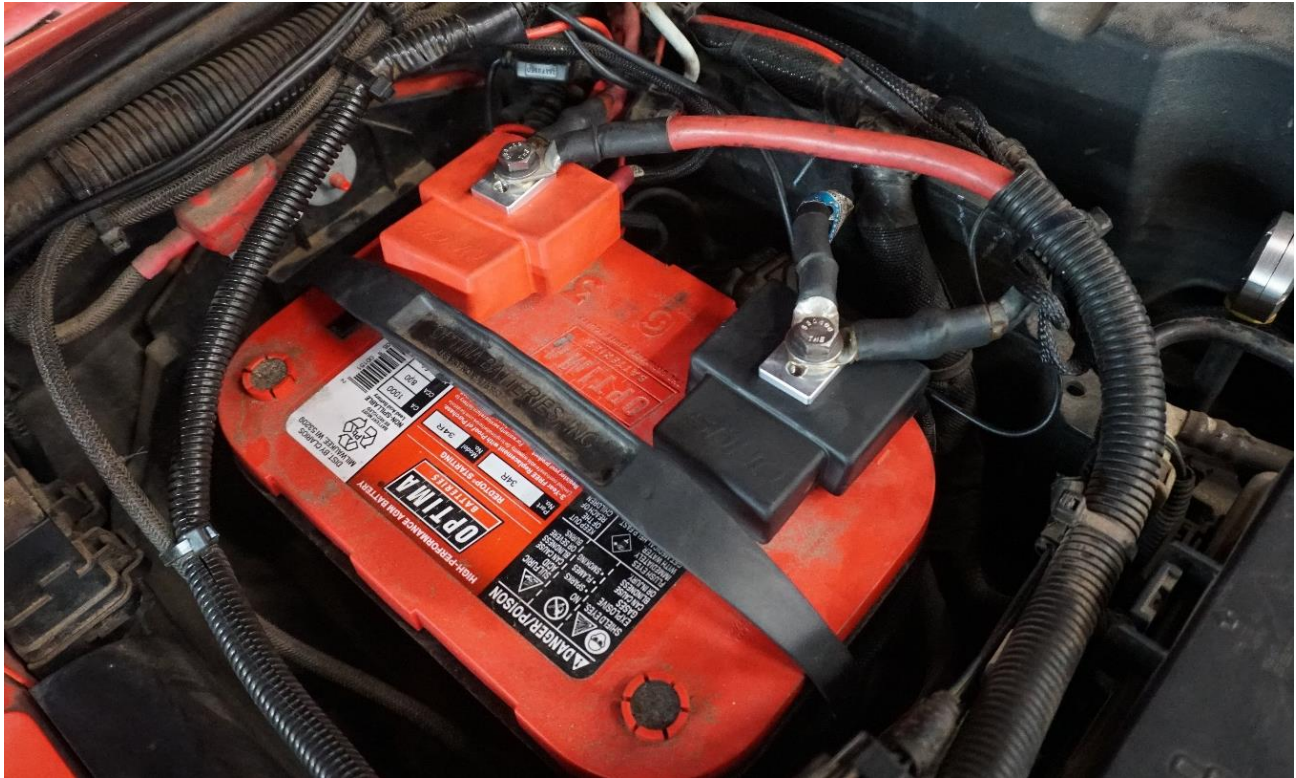


SDHQ Motorsports
 190 S McQueen Rd
 Ste 109 Gilbert, AZ 85233
www.SDHQoffroad.com

INSTALLATION INSTRUCTIONS

Product: *SDHQ-23-3003-JK*

Description: 2007-2017 Jeep Wrangler JK/JKU Complete Billet Battery Terminal Kit



<u>Parts List</u>	<u>Hardware List</u>	<u>Required Tools</u>
(1) SDHQ Complete Billet Battery Terminal Kit SDHQ-02-3003-C2	N/A	7/16", 1/2", 9/16" Sockets Ratchet 1/2", 9/16" Wrench Pliers Rubber Mallet Cut Off Wheel/Grinder

Tech Notes

Apply Anti-Seize to all hardware.
 Cutting the factory terminals is required.

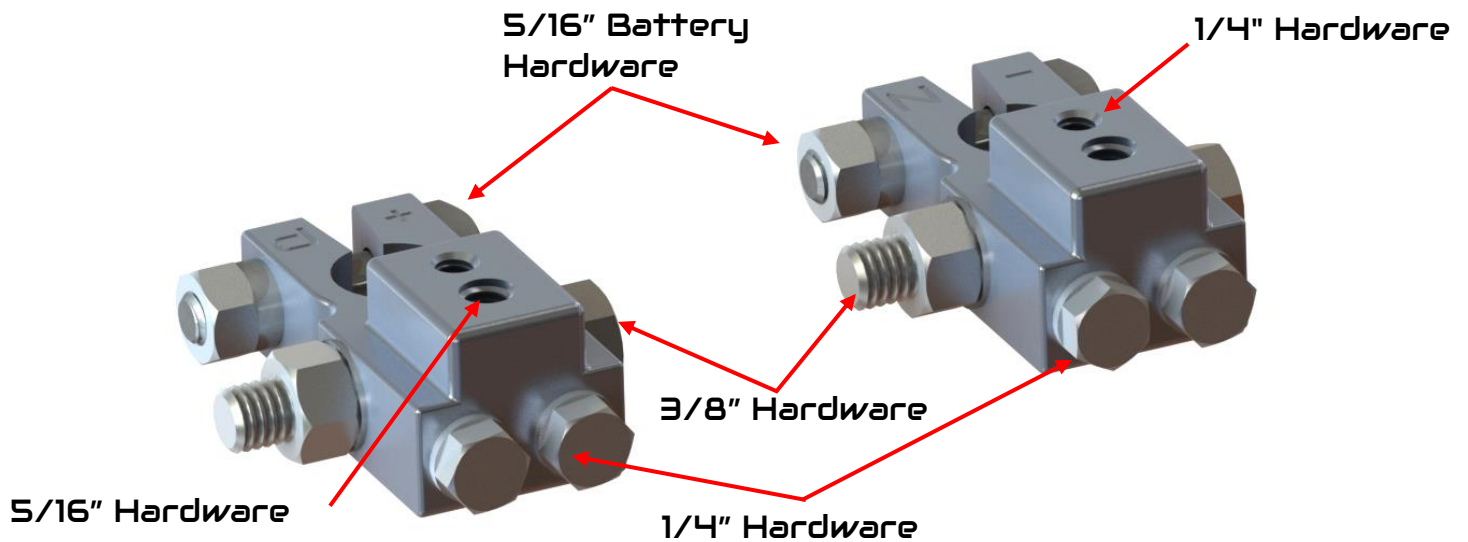
Torque Specifications

Torque the 1/4" – 20 bolts to 4 ft-lb. Torque the 5/16" – 18 bolts to 8 ft-lb. Torque the 3/8" – 16 hardware to 18 ft-lb.
Approx. Install Time: 1 Hour

For questions or help with the installation, please email help@sdhqoffroad.com
 Mon.–Fri. 8:00am–5:30pm and Sat. 8:00am–3:30pm Arizona Time. www.sdhqoffroad.com

SDHQ Positive Accessory Terminal

SDHQ Negative Accessory Terminal



*****READ ALL INSTRUCTIONS THOROUGHLY FROM START TO FINISH BEFORE BEGINNING INSTALLATION!*****

Installation Instructions:

1. Unbox your SDHQ Battery Terminal Upgrade Kit and check over for all parts. Familiarize yourself with the parts.

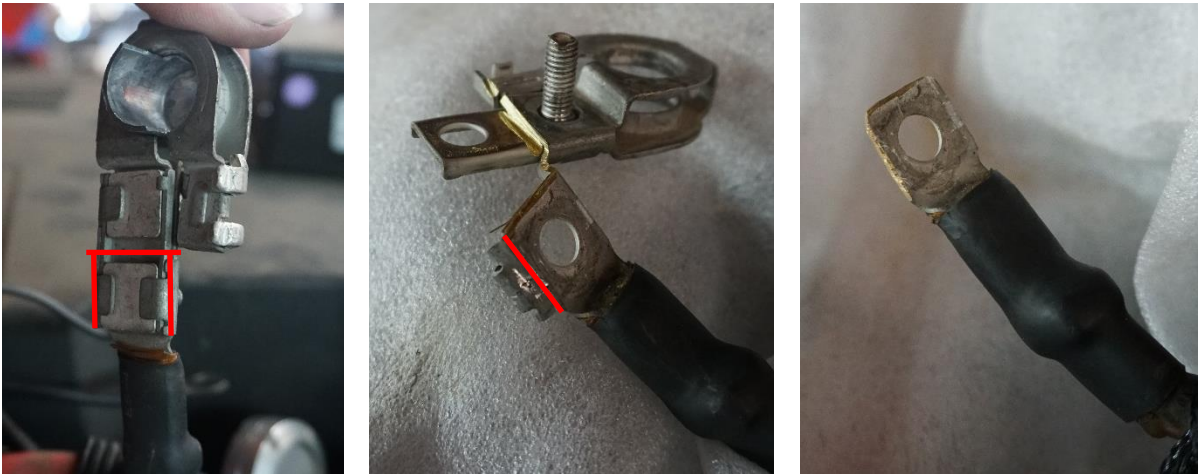


2. Disconnect the negative terminal from the battery and completely remove the 10mm nut. Then disconnect the negative wires from the terminal that can be removed using a 10mm socket.

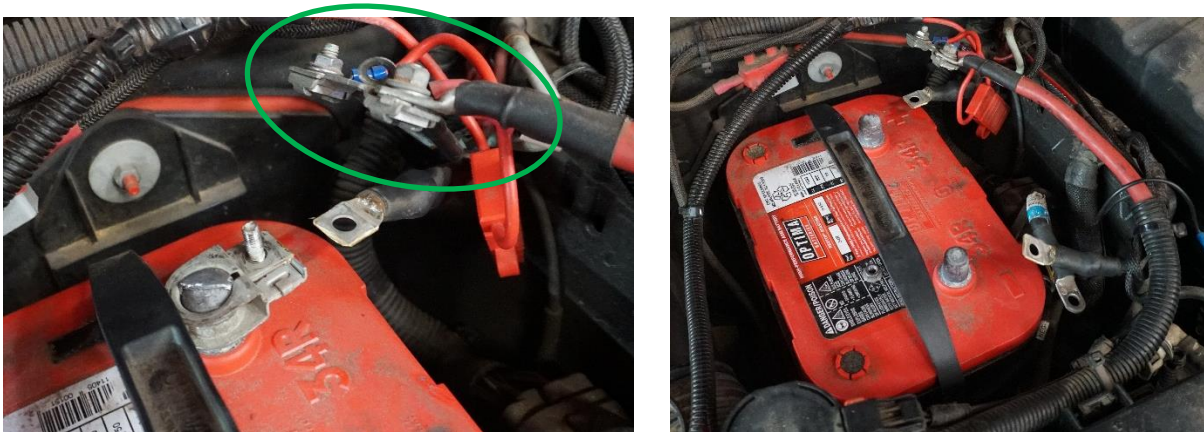


For questions or help with the installation, please email help@sdhqoffroad.com
Mon.–Fri. 8:00am–5:30pm and Sat. 8:00am–3:30pm Arizona Time. www.sdhqoffroad.com

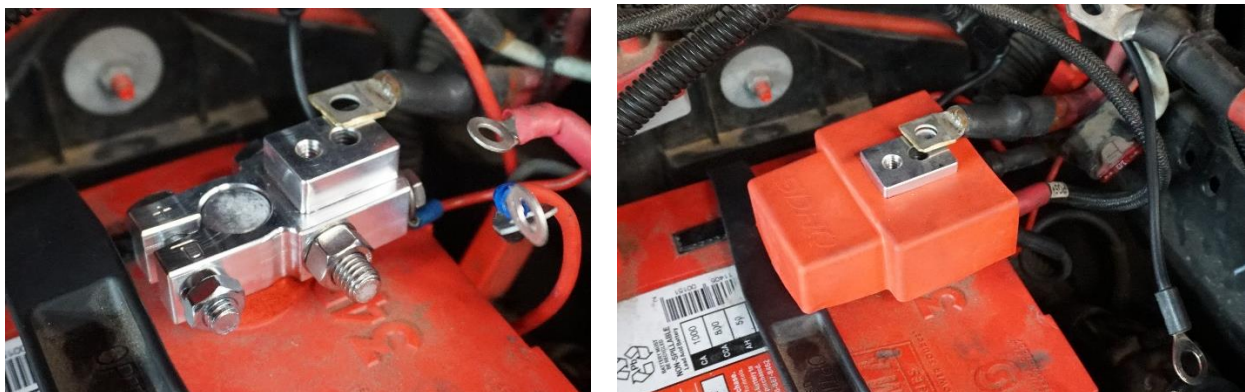
3. Using a cut off wheel cut the terminal between the studs as shown below. Then trim and smooth the tabs on the sides so you're left with a square eyelet. *Cover the battery when cutting or grinding so sparks are isolated.*



4. Repeat steps 2-3 for the positive terminal. Remove the extra contactor from the wires shown in green. *Removing the positive wires and leaving the terminal on the post for support can help when cutting this terminal*



5. **Installing the Positive Terminal.** Install the SDHQ Terminal on the corresponding battery stud with a battery washer underneath. Lightly tap on the top of the terminal using a rubber mallet to set it on the battery post. Tighten the 5/16" Battery Bolt and Nut, using 1/2" wrench on both to prevent damaging the battery post. Connect all accessories to the terminal and then place the red battery cover on top. Connect the main power line to the top of the terminal.



For questions or help with the installation, please email help@sdhqoffroad.com
Mon.–Fri. 8:00am–5:30pm and Sat. 8:00am–3:30pm Arizona Time. www.sdhqoffroad.com

- 6. Installing the Negative Terminal.** Install the SDHQ negative terminal the same way the positive terminal was set up but off of the battery stud when adding wires. Once everything is attached to the terminal place the black battery washer on the negative stud and then the terminal on top. Lightly tap on the top of the terminal using a rubber mallet to set it on the battery post. Tighten the 5/16" Battery Bolt and Nut, using 1/2" wrench on both to prevent damaging the battery post.



- 7. Torque Specification.** Torque the 1/4" – 20 bolts to 4 ft-lb. Torque the 5/16" – 18 bolts to 8 ft-lb. Torque the 3/8" – 16 hardware to 18 ft-lb.
- 8.** You have completed the SDHQ Jeep JK Battery Terminal Upgrade. Enjoy!



*****Double check all hardware is installed correctly and tight*****

*****Re-torque ALL bolts after 100 miles*****



190 S McQueen Rd
Ste 109 Gilbert, AZ 85233
www.sdhqoffroad.com

Follow us on:



Facebook



Instagram

For questions or help with the installation, please email help@sdhqoffroad.com
Mon.–Fri. 8:00am–5:30pm and Sat. 8:00am–3:30pm Arizona Time. www.sdhqoffroad.com