



SDHQ Motorsports
190 S McQueen Rd
Ste 109 Gilbert, AZ 85233
Phone: 480-633-2929

Product Packing List

Product: SDHQ-23-1140-EDL

Description: **Jeep JL EcoDiesel/V8 Switch Pros Power
Module Mount**

_____ (1) SDHQ Power Module Mounting Plate	SDHQ-23-1140-EDL-A
_____ (1) Hardware Package	SDHQ-23-1140-EDL-B
_____ (1) M6 - 1.0 x 25mm S.S. Hex Head Bolt	
_____ (1) 1/4" S.S. Washer	
_____ (2) #8 S.S. SAE Washer	

Inspected and Packaged by: _____ **Date:** _____

For questions or help with the installation, please call SDHQ Offroad @ 480-633-2929
Mon.-Fri. 8:00am-5:30pm and Sat. 8:00am-3:30pm Arizona Time. www.sdhqoffroad.com



SDHQ Motorsports
190 S McQueen Rd
Ste 109 Gilbert, AZ 85233
Phone: 480-633-2929

INSTALLATION INSTRUCTIONS

Product: SDHQ-23-1140-EDL

Description: Jeep JL EcoDiesel/V8 Switch Pros Power Module Mount



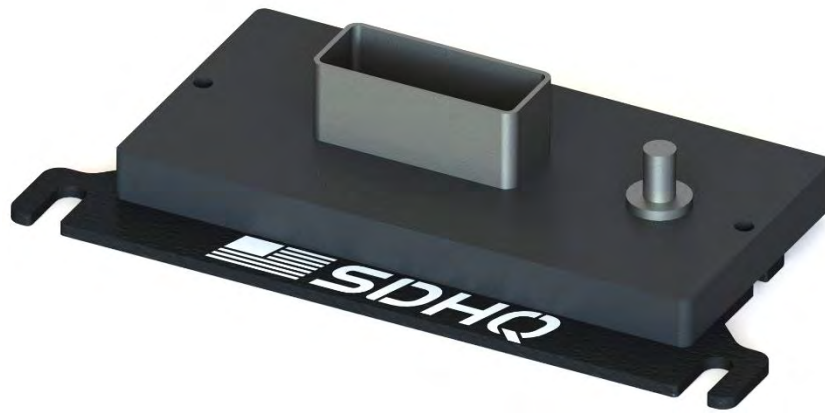
Parts List	Hardware List	Required Tools
(1) SDHQ Power Module Mounting Plate SDHQ-23-1140-EDL-A (1) Hardware Package SDHQ-23-1140-EDL-B	(1) M6 – 1.0 x 25mm S.S. Hex Head Bolt (1) 1/4" S.S. Washer (2) #8 S.S. SAE Washer	10mm Socket 9/32" Socket Ratchet Phillips Screwdriver

Tech Notes

Fits 2020+ Jeep JL and JT with the EcoDiesel or V8 Motor options.
Switch Pros Power Module hardware is used for mounting to the SDHQ mount.
Approximate install: 30 minutes (not including wiring)

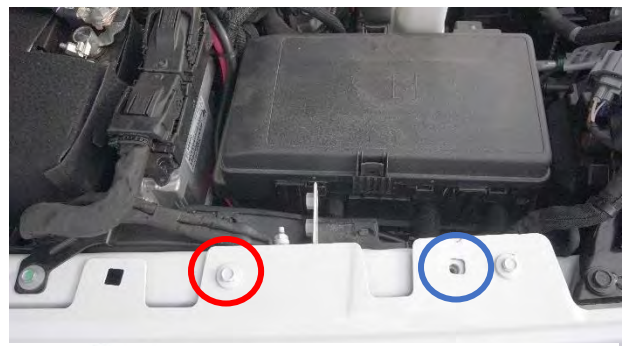
*****READ ALL INSTRUCTIONS THOROUGHLY FROM START TO FINISH BEFORE BEGINNING INSTALLATION!*****

For questions or help with the installation, please call SDHQ Offroad @ 480-633-2929
Mon.–Fri. 8:00am–5:30pm and Sat. 8:00am–3:30pm Arizona Time. www.sdhqoffroad.com



Installation Instructions:

1. Unbox all of your parts and familiarize yourself with them.
2. **Preparing Your Jeep.** Start by opening the hood. On the passenger side, loosen the bolt circled left with a 10mm socket until there is about a 1/2" gap. Thread the M6 bolt with 1/4" washer into the threaded hole circled in blue.
3. Now place the Switch Pros Power Module onto the SDHQ mount and line up the holes. Insert the Switch Pros bolts through the Power Module and mount. Secure the Switch Pros Power Module with the supplied #8 washer and Switch Pros nuts. Use the drawing on the right as a reference.



4. Slide the mount where the previously loosened bolts from Step 2 are. Once the placement is in a desirable position, tighten the (2) bolts.
5. Proceed with the wiring of the power module.



For questions or help with the installation, please call SDHQ Offroad @ 480-633-2929
Mon.-Fri. 8:00am-5:30pm and Sat. 8:00am-3:30pm Arizona Time. www.sdhqoffroad.com

Wiring:

Once the Switch-Pros power module is mounted, but BEFORE it is connected to anything else, do the following:

1. Reinstall battery (if battery was removed during installation), and secure factory connections. Start vehicle and confirm that battery is properly installed, connected and grounded.
2. Connect the Switch-Pros Ground wire lug to the negative terminal on the battery (grounding elsewhere will not properly filter noise and will void your product warranty).
3. Plug the 16-pin harness into the power module; be sure it locks in.
4. Connect the red Battery Cable to the positive terminal on the battery. Tighten down both ends, to prevent lug from rotating and possibly causing friction or spark.
5. **Enjoy your SDHQ mounted Switch Pros Power Module!**

*****Double check all hardware is installed correctly and tight*****

*****Re-torque ALL bolts after 100 miles*****



190 S McQueen Rd
Ste 109 Gilbert, AZ 85233
Phone: 480-633-2929 | Fax: 480-633-1791
www.sdhqoffroad.com

Follow us on:



Facebook



Instagram

For questions or help with the installation, please call SDHQ Offroad @ 480-633-2929
Mon.–Fri. 8:00am–5:30pm and Sat. 8:00am–3:30pm Arizona Time. www.sdhqoffroad.com