



SDHQ Motorsports
190 S McQueen Rd
Ste 109 Gilbert, AZ 85233
Phone: 480-633-2929

Product Packing List

Product: *SDHQ-15-1801-G5*

Description: **2019+ Ford Ranger Bed Rack**

- | | |
|---|---------------------|
| _____ (1) Front Plate | SDHQ-15-1801-G5-A |
| _____ (1) Main Plate | SDHQ-15-1801-G5-B |
| _____ (1) Driver Side Plate | SDHQ-15-1801-G5-C |
| _____ (1) Passenger Side Plate | SDHQ-15-1801-G5-D |
| _____ (1) Driver Support Tube | SDHQ-15-1801-G5-E |
| _____ (1) Passenger Support Tube | SDHQ-15-1801-G5-F |
| _____ (2) Capture Nut Plate | SDHQ-15-1801-G5-G |
| _____ (1) Driver Upper Mount Extension | SDHQ-15-1801-G5-H |
| _____ (1) Passenger Upper Mount Extension | SDHQ-15-1801-G5-I |
| _____ (2) Upper Mount to Bed | SDHQ-15-1801-G5-J |
| _____ (1) SDHQ Tie Down Kit | SDHQ-00-1810-U1 |
| _____ (1) Hardware Package | SDHQ-00-1801-U1-HP |
| _____ (8) 3/8" - 16 x 3/4" Grade 8 Hex Bolt | |
| _____ (8) 3/8" - 16 Grade 8 Lock Nut | |
| _____ (16) 3/8" Grade 8 Washers | |
| _____ (18) 5/16" - 18 x 3/4" Grade 8 Hex Bolt | |
| _____ (18) 5/16" - 18 Grade 8 Lock Nut | |
| _____ (36) 5/16" Grade 8 Washer | |
| _____ (4) 7/16 - 14 x 1" Grade 8 Hex Head Bolt | |
| _____ (4) 7/16" Grade 8 Washer | |
| _____ (1) Ranger Hardware Package | SDHQ-15-1801-G5-RHP |
| _____ (4) M8 - 1.25 x 30mm Class 10.9 Bolt | |
| _____ (8) 5/16" - 18 x 3/4" Grade 8 Bolts | |
| _____ (4) 5/16" - 18 Grade 8 Lock Nut | |
| _____ (16) 5/16" Grade 8 Washer | |
| _____ (2) 5/16" - 18 x 1" S.S. Countersunk Bolt | |
| _____ (2) 5/16" - 18 Rivet Nut | |
| _____ (2) 5/16" Countersunk Delrin Washer | |
| _____ (2) 1.5" Plastic Round Tube Plug | |

Inspected and Packaged by: _____ **Date:** _____

For questions or help with the installation, please call SDHQ Offroad @ 480-633-2929
Mon.-Fri. 8:00am-5:30pm and Sat. 8:00am-3:30pm Arizona Time. www.sdhqoffroad.com

Included in SDHQ-00-1810-U1:

(2) Tie Downs

(1) Hardware Package

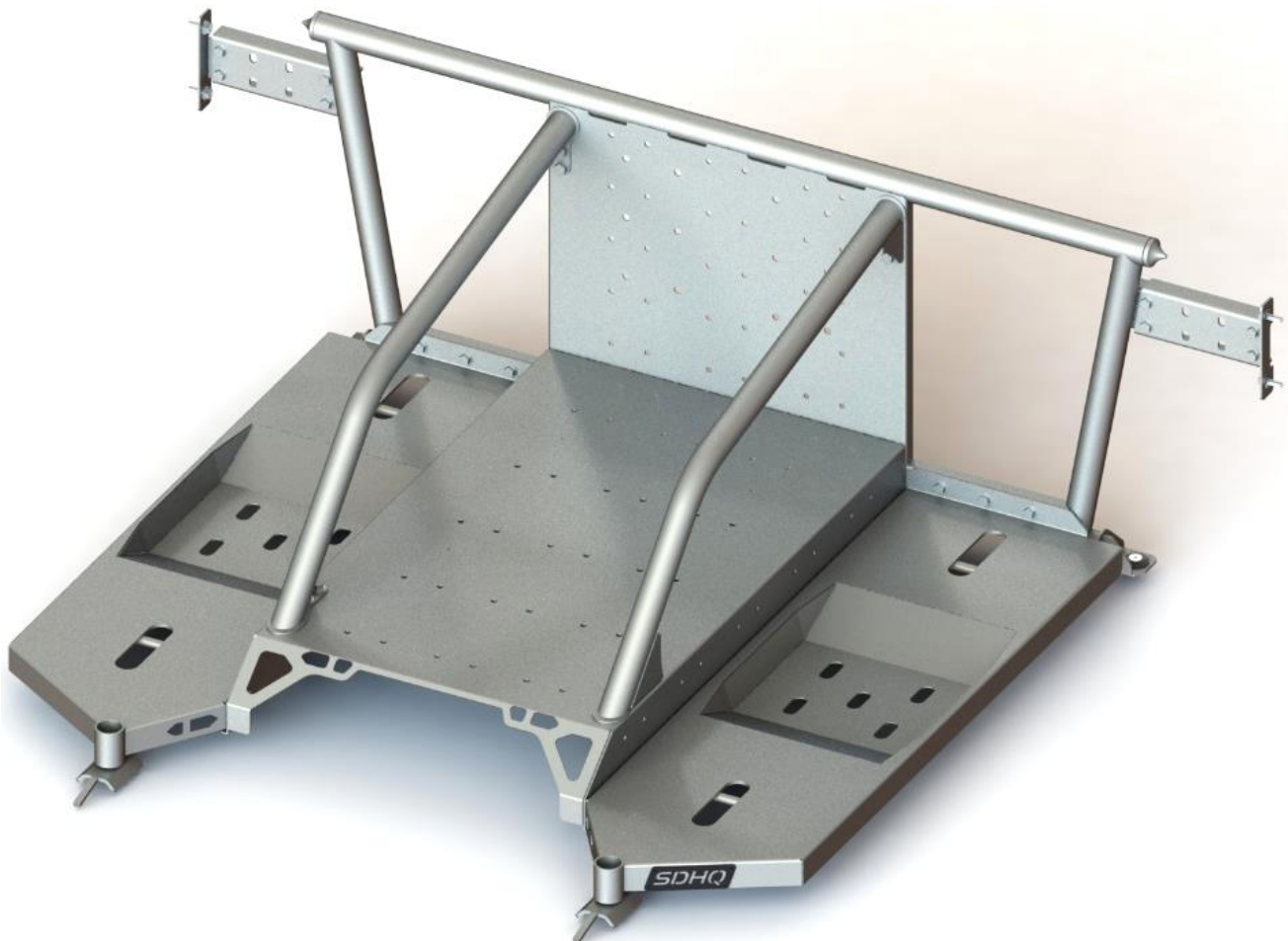
(4) 5/16" - 18 x 3/4" Grade 8 Hex Bolt

(8) 5/16" Grade 8 Washer

(4) 5/16" - 18 Grade 8 Lock Nut

SDHQ-00-1810-U1-A

SDHQ-00-1810-U1-B



For questions or help with the installation, please call SDHQ Offroad @ 480-633-2929
Mon.-Fri. 8:00am-5:30pm and Sat. 8:00am-3:30pm Arizona Time. www.sdhqoffroad.com



SDHQ Motorsports
 190 S McQueen Rd
 Ste 109 Gilbert, AZ 85233
 Phone: 480-633-2929

INSTALLATION INSTRUCTIONS

Product: SDHQ-15-1801-G5

Description: 2019+ Ford Ranger Build in Bed Chase Rack

<u>Parts List</u>	<u>Hardware List</u>	<u>Required Tools</u>
(1) Front Plate SDHQ-15-1801-G5-A (1) Main Plate SDHQ-15-1801-G5-B (1) Driver Side Plate SDHQ-15-1801-G5-C (1) Passenger Side Plate SDHQ-15-1801-G5-D (1) Driver Support Tube SDHQ-15-1801-G5-E (1) Passenger Support Tube SDHQ-15-1801-G5-F (2) Capture Nut Plate SDHQ-15-1801-G5-G (1) Driver Upper Mount Extension SDHQ-15-1801-G5-H (1) Passenger Upper Mount Extension SDHQ-15-1801-G5-I (2) Upper Mount to Bed SDHQ-15-1801-G5-J (1) SDHQ Tie Down Kit SDHQ-00-1810-U1 (1) Hardware Package SDHQ-00-1801-HP (1) Ranger Hardware Package SDHQ-15-1801-G5-RHP	<p style="text-align: center;"><u>Hardware Package</u></p> (8) 3/8" - 16 x 3/4" Grade 8 Hex Head Bolt (8) 3/8" - 16 Grade 8 Lock Nut (16) 3/8" Grade 8 Washer (18) 5/16" - 18 x 3/4" Grade 8 Hex Head Bolt (18) 5/16" - 18 Grade 8 Lock Nut (36) 5/16" Grade 8 Washer (4) 7/16" - 14 x 1" Grade 8 Hex Head Bolt (4) 7/16" Grade 8 Washer <p style="text-align: center;"><u>Ranger Hardware Package</u></p> (4) M8 - 1.25 x 30mm Class 10.9 Hex Bolt (8) 5/16" - 18 x 3/4" Grade 8 Hex Bolt (4) 5/16" - 18 Grade 8 Lock Nut (16) 5/16" Grade 8 Washer (2) 5/16" - 18 x 1" S.S. Countersunk Bolt (2) 5/16" - 18 Rivet Nut (2) 5/16" Countersunk Delrin Washer (2) 1.5" Plastic Round Tube Plug	1/2", 9/16" and 5/8" Sockets 13mm Socket Ratchet 1/2" and 9/16" Wrenches Torque Wrench Drill 1/8" Drill Bit 1/2" Step Bit 3/16" Hex Key 5/16" - 18 Rivet Nut Tool Sharpie M8 - 1.25 Tap

Tech Notes

Hardware Package (SDHQ-00-1801-HP) is for assembling the Chase Rack and the lower mounts.

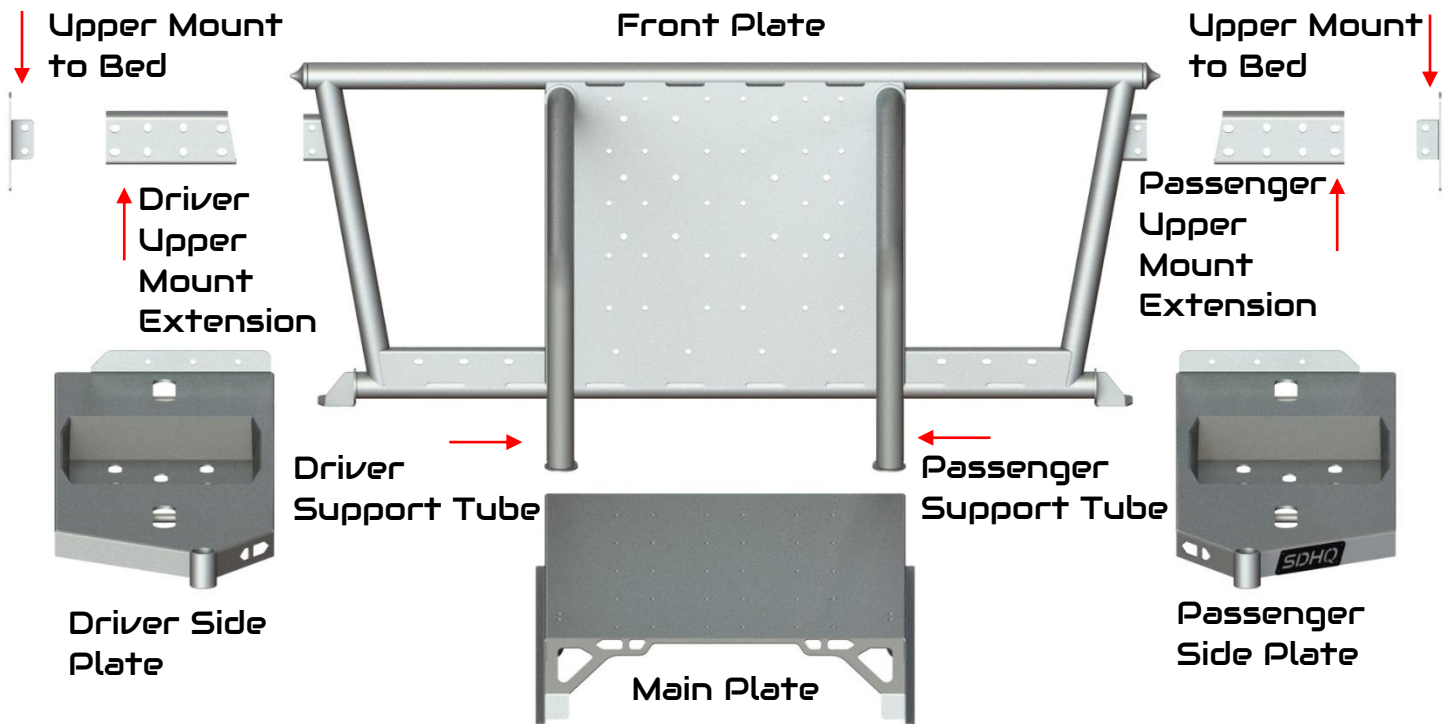
(2) sets of 7/16" hardware won't be used.

Ranger Hardware Package (SDHQ-15-1801-G5-RHP) is for the upper mounts.

More than 1 person is required to complete install

****Approximate Install time: 3-4 hours****

For questions or help with the installation, please call SDHQ Offroad @ 480-633-2929
 Mon.-Fri. 8:00am-5:30pm and Sat. 8:00am-3:30pm Arizona Time. www.sdhqoffroad.com



*****READ ALL INSTRUCTIONS THOROUGHLY FROM START TO FINISH BEFORE BEGINNING INSTALLATION!*****

Installation Instructions:

1. Unbox your Ford Ranger Bed rack and lay the parts out on a clean surface. Verify all components are present and familiarize yourself with them.
2. Place the Main Plate on a level surface. Align the Front Plate in front of the Main Plate. Insert (4) 5/16" – 18 x 3/4" Grade 8 hex head bolts with 5/16" washers through the Main Plate and Front Plate holes. Place 5/16" washers and thread (4) 5/16" – 18 Lock Nuts on the front of the Front Plate.



For questions or help with the installation, please call SDHQ Offroad @ 480-633-2929
 Mon.–Fri. 8:00am–5:30pm and Sat. 8:00am–3:30pm Arizona Time. www.sdhqoffroad.com

3. Align the Driver Side Plate next to the Front Plate and Main Plate. There is a total of (7) 5/16" – 18 x 3/4" Grade 8 Hex head bolts that will be used on this side. (3) bolts will connect the Driver Side Plate and the Front Plate. The other (4) bolts will connect the Driver Side Plate and the Main Plate. Use the 5/16" washers on both sides of the bolt.



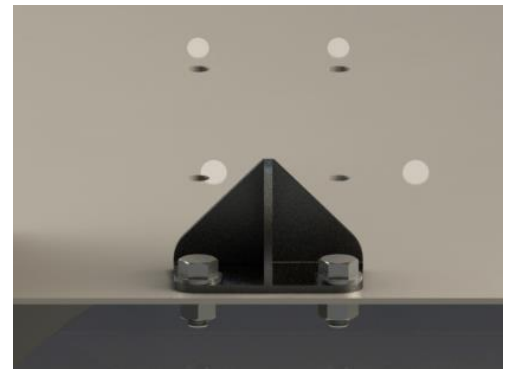
4. Repeat Step 3 for the Passenger Side Plate.



5. Align the Driver Support Tube with the Main Plate and Front Plate as pictured. Insert (4) 3/8" – 16 x 3/4" Grade 8 Hex head bolts with 3/8" washers through the Driver Support Tube on the Front Plate and Floor Plate. Place 3/8" washers and thread 3/8" – 16 Lock Nuts onto the 3/8" Hex head bolts. Repeat this for the Passenger Support Tube.

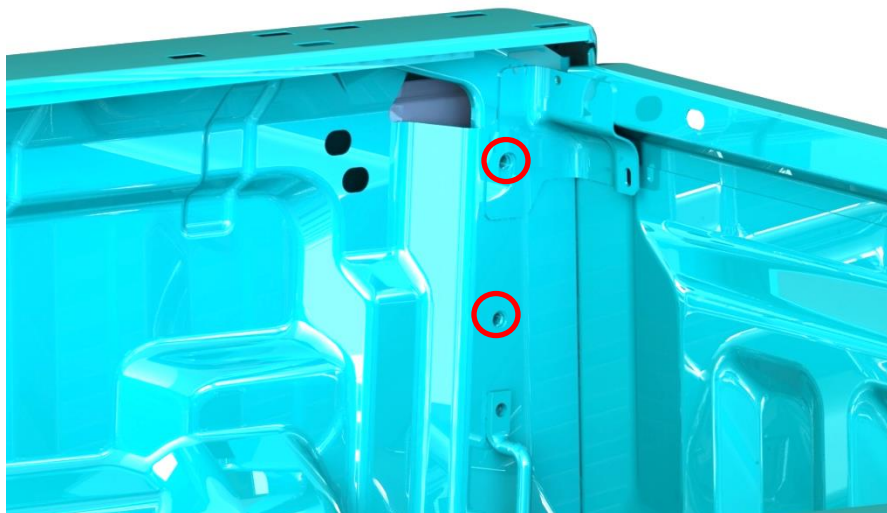


6. Use (2) 5/16" – 18 x 3/4" Grade 8 Hex head bolts, (4) 5/16" washers and (2) 5/16 – 18 Lock Nuts for each tie down mount. Bolt the mounts as pictured below. The mounts can be placed where needed on the Bed rack.



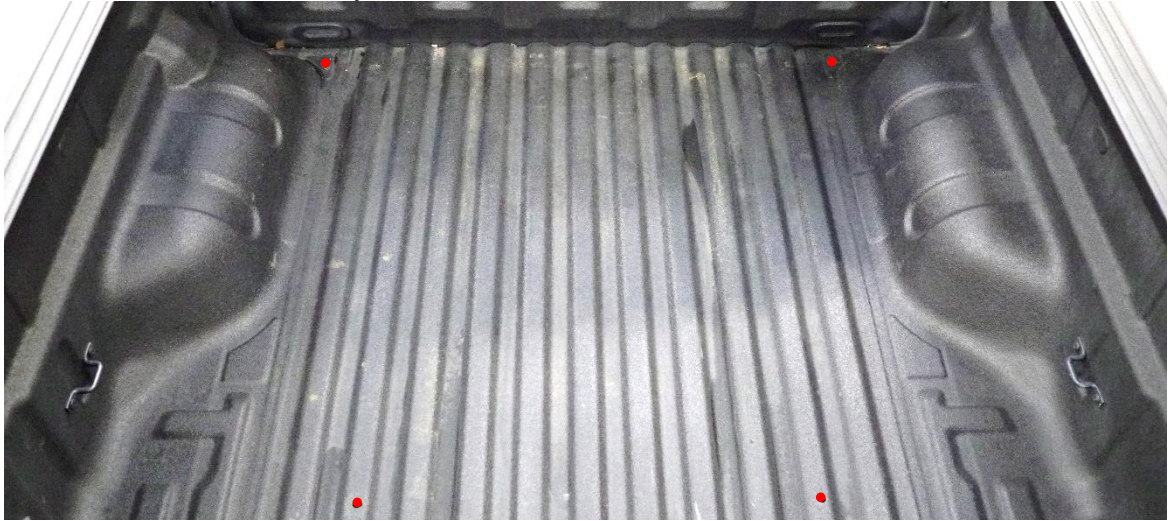
7. Tighten all bolts before installing into the bed of your Ranger.

8. If your bed is bed lined, (4) M8 – 1.25 holes will need to be tapped near the front of your bed. Tap (2) M8 threaded holes near the front driver side of your bed, as circled below. Tap the other (2) holes near the front passenger side of your bed.



For questions or help with the installation, please call SDHQ Offroad @ 480-633-2929
Mon.–Fri. 8:00am–5:30pm and Sat. 8:00am–3:30pm Arizona Time. www.sdhqoffroad.com

9. Align the Bed Rack so the top tube is straight and about $\frac{1}{4}$ " – $\frac{1}{2}$ " away from the front of the truck bed. Mark (4) the mounting holes of the Bed Rack on your bed. Remove the Bed Rack and predrill a hole through the marks using a $\frac{1}{8}$ " drill bit. Use a step bit and drill the hole to $\frac{1}{2}$ ". Deburr the hole if necessary.



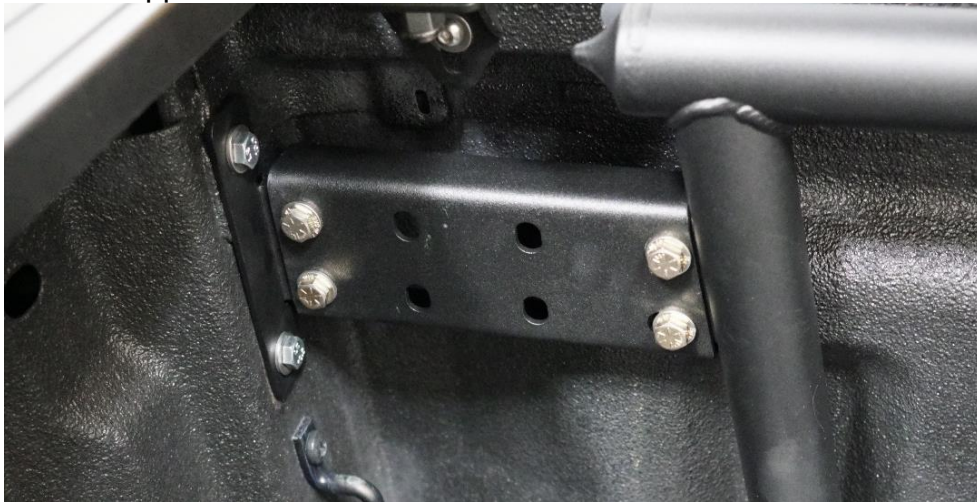
10. Install (1) $\frac{5}{16}$ " – 18 Rivet Nut into each front hole as shown below.



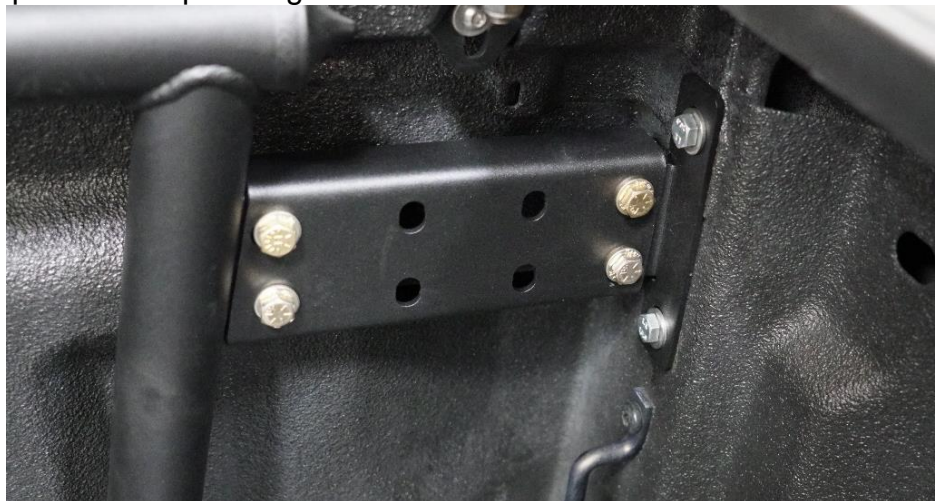
11. Align the bed rack back into position. Begin threading (1) $\frac{5}{16}$ " – 18 x 1" S.S. Countersunk bolt and (1) $\frac{5}{16}$ " Countersunk Delrin Washer into the front driver side mount. Repeat for the front passenger side mount. See pictures below. Do not fully tighten mounting hardware until all hardware is installed.



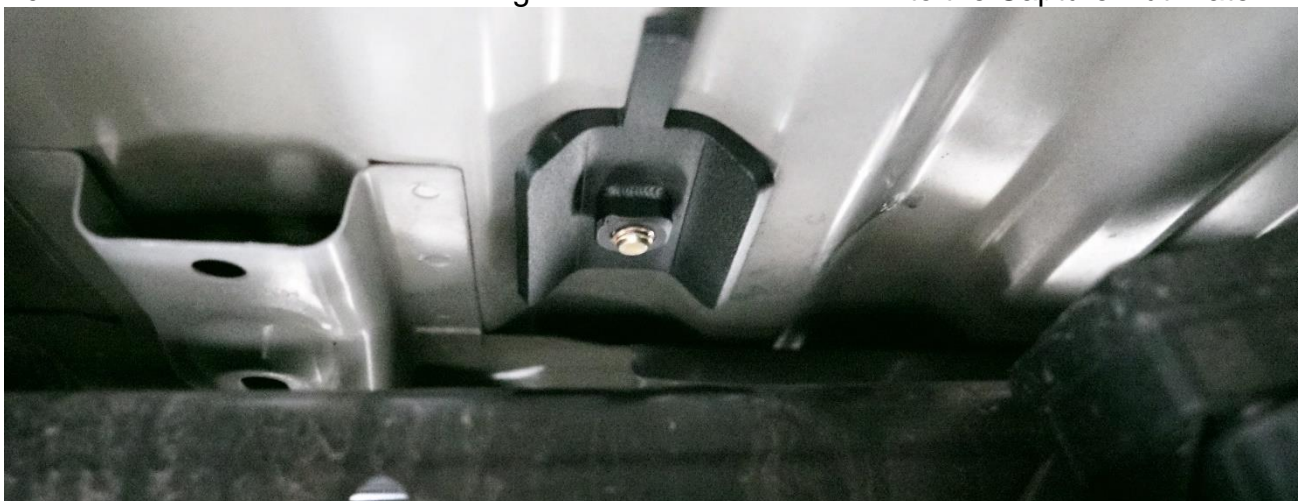
- 12.** Align (1) Upper Mount to Bed to the holes circled in Step 8. Begin threading (1) M8 – 1.25 S.S. Bolt and (1) 5/16" S.S. Washer into each threaded bed hole. Place the Driver Upper Mount Extension over the Upper Mount to Bed and Front Plate. Thread (2) 5/16" – 18 Grade 8 Bolts and Washers through the Driver Upper Mount Extension to the nuts pressed into Upper Mount to Bed. Using (2) 5/16" – 18 x 3/4" Bolts, (4) 5/16" Washers and (2) 5/16" – 18 Lock Nuts, secure the Driver Upper Mount Extension to the Front Plate.



- 13.** Repeat Step 12 for the passenger side.



- 14.** From underneath the truck bed, locate the rear driver mounting hole. Place (1) Capture Nut Plate flat against the truck bed with the weld nut facing the ground as shown below. Thread (1) 7/16" – 14 x 1" Bolt and Washer through the Bed Rack and bed into the Capture Nut Plate.



15. Repeat Step 14 for the passenger side rear mounting point.



16. Begin tightening all mounting bolts. Start by tightening the (2) 7/16" rear mounting bolts followed by the front lower 5/16" countersunk bolts. Tighten the M8 bolts followed by the 5/16" bolts securing the Upper Mount Extensions. Torque the 7/16" hardware to 60 ft-lbs. Torque the M8 and 5/16" Upper Mount Extension hardware to 20 ft-lbs. Torque the 5/16" countersunk bolts to 10 ft-lbs.

17. With the Bed Rack mounting complete, the (2) 1 1/2" Plastic Round Tube Caps can be placed over the rear mounting tubes.

18. Place any accessories such as spare tires and Scribner cans on the Bed Rack. Be sure to strap all accessories appropriately and enjoy your new SDHQ Bed Rack!

*****Double check all hardware is installed correctly and tight*****

*****Re-torque ALL bolts after 100 miles*****



190 S McQueen Rd
Ste 109 Gilbert, AZ 85233
Phone: 480-633-2929 | Fax: 480-633-1791
www.sdhqoffroad.com

Follow us on:



Facebook



Instagram

For questions or help with the installation, please call SDHQ Offroad @ 480-633-2929
Mon.–Fri. 8:00am–5:30pm and Sat. 8:00am–3:30pm Arizona Time. www.sdhqoffroad.com