



SDHQ Motorsports
190 S McQueen Rd
Ste 109 Gilbert, AZ 85233
Phone: 480-633-2929

Product Packing List

Product: SDHQ-15-1206-G5

Description: 2019+ Ford Ranger A-Pillar Light Mounts

_____ (1) Driver Side Mount	SDHQ-15-1206-G5-A
_____ (1) Driver Side Support Bracket	SDHQ-15-1206-G5-B
_____ (1) Passenger Side Mount	SDHQ-15-1206-G5-C
_____ (1) Passenger Side Support Bracket	SDHQ-15-1206-G5-D
_____ (1) Hardware Package	SDHQ-15-1206-G5-E
_____ (2) 1/4" - 20 x 3/4" S.S. Button Head Bolt	
_____ (4) 1/4" S.S. Washer	
_____ (2) 1/4" - 20 Nylock Nut	
_____ (2) SDHQ Silicone Protective Pads	

Inspected and Packaged By: _____ Date: _____

For questions or help with the installation, please call SDHQ Offroad @ 480-633-2929
Mon.-Fri. 8:00am-5:30pm and Sat. 8:00am-3:30pm Arizona Time. www.sdhqoffroad.com

**For questions or help with the installation, please call SDHQ Offroad @ 480-633-2929
Mon.–Fri. 8:00am–5:30pm and Sat. 8:00am–3:30pm Arizona Time. www.sdhqoffroad.com**



SDHQ Motorsports
 190 S McQueen Rd
 Ste 109 Gilbert, AZ 85233
 Phone: 480-633-2929

INSTALLATION INSTRUCTIONS

Product: SDHQ-15-1206-G5

Description: 2019+ Ford Ranger A-Pillar Light Mounts



<u>Parts List</u>	<u>Hardware List</u>	<u>Required Tools</u>
(1) Driver Side Mount SDHQ-15-1206-G5-A (1) Driver Side Support Bracket SDHQ-15-1206-G5-B (1) Passenger Side Mount SDHQ-15-1206-G5-C (1) Passenger Side Support Bracket SDHQ-15-1206-G5-D (1) Hardware Package SDHQ-15-1206-G5-E	(2) 1/4" – 20 x 3/4" S.S. Button Head Bolts (4) 1/4" S.S. Washers (2) 1/4" – 20 Nylock Nuts (2) SDHQ Silicone Protective Pads	Ratchet 10mm Socket 7/16" Socket 10mm Ratcheting Wrench 5/32" Allen Key Tape Hood Prop Flat Head Screw Driver Dremel and Burr Bit Marker

Tech Notes

Apply Anti-Seize to all Stainless Steel (S.S.) Hardware.

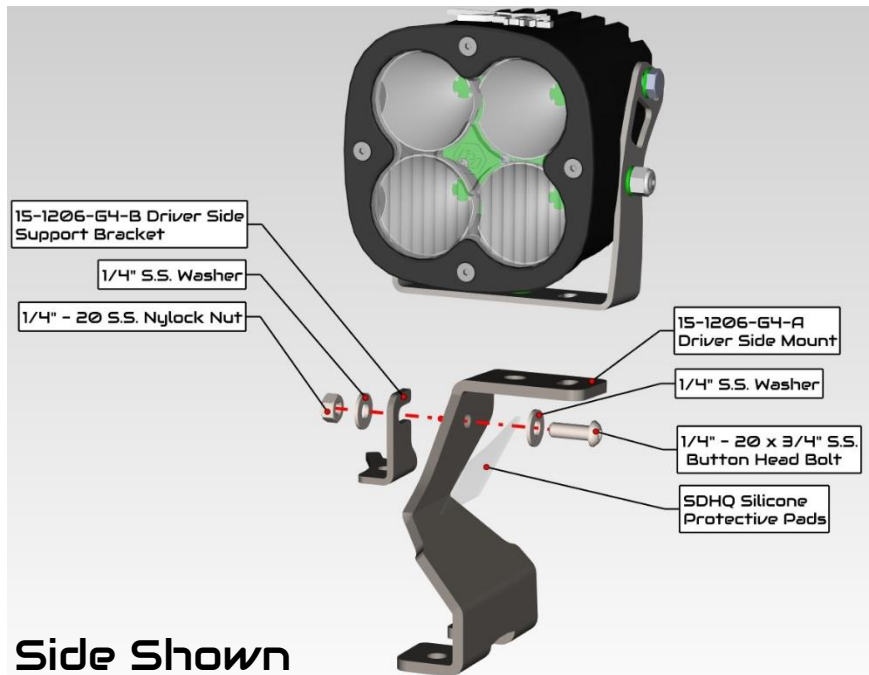
Mount all lights using the hole. Use the slot for larger lights if applicable.

Factory cowlings will need to be trimmed to fit.

Use a hood prop and mark hood hinges outline with a marker before removal for ease of alignment during installation.

Approx. Install Time: 1 Hour

For questions or help with the installation, please call SDHQ Offroad @ 480-633-2929
 Mon.–Fri. 8:00am–5:30pm and Sat. 8:00am–3:30pm Arizona Time. www.sdhqoffroad.com



Driver Side Shown

*****READ ALL INSTRUCTIONS THOROUGHLY FROM START TO FINISH BEFORE BEGINNING INSTALLATION! *****

Installation Instructions:

1. Unbox your 2019+ Ford Ranger A-Pillar Light Mounts. Verify all parts are present and familiarize yourself with the diagrams above. Apply the Silicone Protective Pads to the A-Pillar Light Mounts as pictured right. Remove the hard plastic protective cover off the pads.



2. Open your hood and prop it open with a hood prop. Using tape, tape off the outer rear edges of the hood and the fender as shown on the right.



3. Using a flat head screw driver, remove the press-in clip arrowed to the right. Remove the cowl and set aside. (Passenger side shown)



For questions or help with the installation, please call SDHQ Offroad @ 480-633-2929
 Mon.–Fri. 8:00am–5:30pm and Sat. 8:00am–3:30pm Arizona Time. www.sdhqoffroad.com

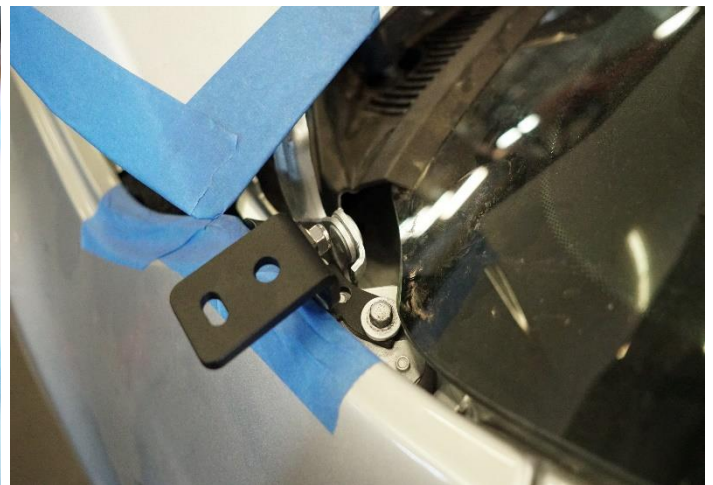
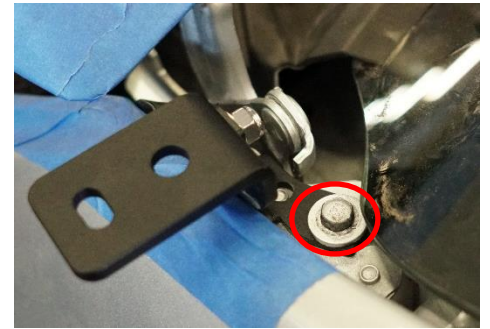
4. On the driver side, locate the hood hinge to fender bolts as shown right. With a 10mm wrench, loosen the rear bolt until there are only a few threads holding it on. Remove the front bolt completely. ****Mark the outline of your hood hinge before loosening the 10mm bolts. This will assist in alignment during installation****



5. Now the driver side light mount can be placed into position. Follow the pictures below. Thread in both hood hinge bolts. Leave them loose for adjustments.



6. Loosen the 10mm bolt connecting the top of the fender to the truck as shown right. Slide the driver side support bracket under the bolt and washer.
7. Apply Anti-Seize to the 1/4" – 20 S.S. Button Head Hardware and install it through the light mount and support bracket with washers and nylock nuts.
8. While holding the mount towards the rear and center of the truck, start tightening the 10mm hood hinge to fender bolts. Next, tighten the 1/4" hardware followed by the 10mm fender bolt.



9. Repeat Steps 2-8 for the passenger side light mount.

10. Now the cowls need to be cut. Measure and mark 7/16" from the center tab on the cowls. Measure and mark 2 1/2" down from the first mark. Extend the marks to the raised edge. Cut along these lines as shown below.



11. Install the cut cowls and press-in clips. Install lights using the hole, secure bigger lights with the slot if applicable. Position lights as desired. Enjoy your new SDHQ A-Pillar Light Mounts!

Double check all hardware is installed correctly and tight

Re-torque ALL bolts after 100 miles



190 S McQueen Rd
Ste 109 Gilbert, AZ 85233
Phone: 480-633-2929 | Fax: 480-633-1791
www.sdhqoffroad.com

Follow us on:



Facebook



Instagram

For questions or help with the installation, please call SDHQ Offroad @ 480-633-2929
Mon.-Fri. 8:00am-5:30pm and Sat. 8:00am-3:30pm Arizona Time. www.sdhqoffroad.com