



**SDHQ Motorsports**  
190 S McQueen Rd  
Ste 109 Gilbert, AZ 85233  
[www.SDHQoffroad.com](http://www.SDHQoffroad.com)

---

## Product Packing List

**Product:** SDHQ-15-1140-G6

**Description:** SDHQ Built 2024+ Ford Ranger Power  
Module Mount

\_\_\_\_\_ (1) SDHQ Built Power Module Mount

SDHQ-15-1140-G6-A

Inspected and Packaged By: \_\_\_\_\_ Date: \_\_\_\_\_

For questions or help with the installation, please email [help@sdhqoffroad.com](mailto:help@sdhqoffroad.com)  
Store front hours: Mon. – Fri. 8:00am – 5:30pm and Sat. 9:00am – 2:00pm Arizona Time.





SDHQ Motorsports  
190 S McQueen Rd  
Ste 109 Gilbert, AZ 85233  
[www.SDHQoffroad.com](http://www.SDHQoffroad.com)

## INSTALLATION INSTRUCTIONS

**Product:** SDHQ-15-1140-G6

**Description:** SDHQ Built 2024+ Ford Ranger Power Module Mount



<b>Parts List</b>	<b>Hardware List</b>	<b>Required Tools</b>
(1) SDHQ Built Power Module Mount SDHQ-15-1140-G6-A		13mm Wrench 10mm Socket Ratchet Tools to Install Power Module

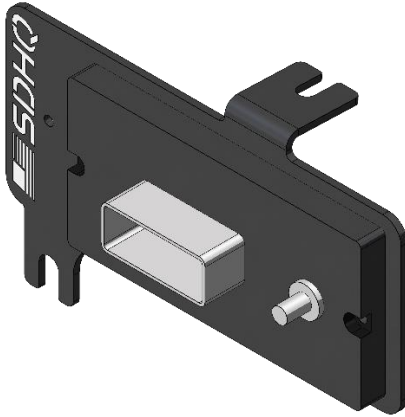
### **Tech Notes**

Approx. Install Time: 20 Minutes **(Not Including Wiring)**

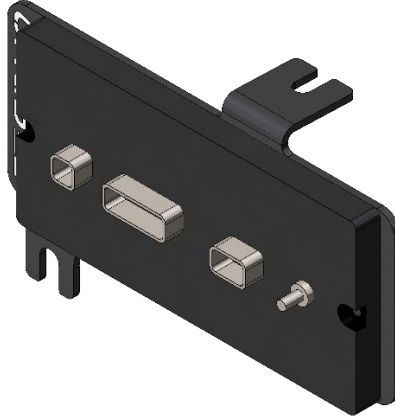
**\*\*\*READ ALL INSTRUCTIONS THOROUGHLY FROM START TO FINISH BEFORE BEGINNING INSTALLATION! \*\*\***

For questions or help with the installation, please email [help@sdhqoffroad.com](mailto:help@sdhqoffroad.com)  
Store front hours: Mon. – Fri. 8:00am – 5:30pm and Sat. 9:00am – 2:00pm Arizona Time.

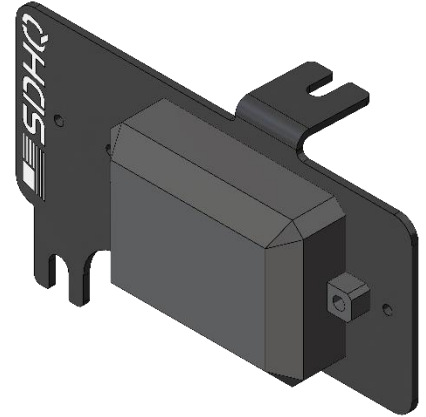
# SDHQ-15-1140-G6



Switch Pros 9100



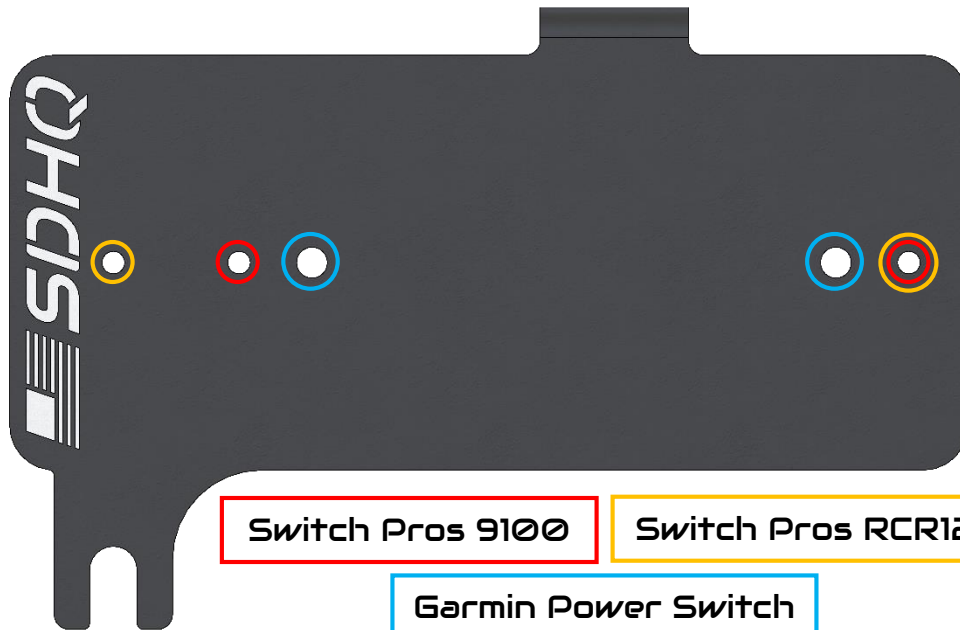
Switch Pros RCR12



Garmin Power Switch

## Installation Instructions:

1. Un-box your SDHQ Built 2024+ Ranger Raptor Power Module Mount and lay out the parts. Verify all parts are present and familiarize yourself with all the parts.
2. Using the hardware provided with your power module install the module onto the mount.



For questions or help with the installation, please email [help@sdhqoffroad.com](mailto:help@sdhqoffroad.com)  
Store front hours: Mon. – Fri. 8:00am – 5:30pm and Sat. 9:00am – 2:00pm Arizona Time.



3. Using a 13mm wrench loosen the bolt on the frame rail so that the mount can slide under it.



4. Using a 10mm socket and a ratchet remove the center fender bolt.



5. Slide the Mount under the lower bolt next to the fuse box and reinstall the 10mm bolt into the center fender hole through the slot but do not tighten down.



6. Using a 13mm wrench tighten the lower bolt next to the fuse box. Using a 10mm socket and a ratchet tighten the fender bolt.



For questions or help with the installation, please email [help@sdhqoffroad.com](mailto:help@sdhqoffroad.com)  
Store front hours: Mon. – Fri. 8:00am – 5:30pm and Sat. 9:00am – 2:00pm Arizona Time.

7. Wire up your Power Module according to the manufactures instructions.
8. Enjoy your SDHQ Built Power Module Mount for your 24+ Ranger Raptor.



\*\*\*Double check all hardware is installed correctly and tight\*\*\*

\*\*\*Re-torque ALL bolts after 100 miles\*\*\*



190 S McQueen Rd  
Ste 109 Gilbert, AZ 85233  
[www.sdhqoffroad.com](http://www.sdhqoffroad.com)

Follow us on:



Facebook



Instagram

For questions or help with the installation, please email [help@sdhqoffroad.com](mailto:help@sdhqoffroad.com)  
Store front hours: Mon. – Fri. 8:00am – 5:30pm and Sat. 9:00am – 2:00pm Arizona Time.