



**SDHQ Motorsports**  
190 S McQueen Rd  
Ste 109 Gilbert, AZ 85233  
[www.SDHQoffroad.com](http://www.SDHQoffroad.com)

## Product Packing List

**Product:** SDHQ-14-1131-G6-9100/RCR12

**Description:** 2021+ Ford Bronco Overhead Switch Pros Keypad Mount

\_\_\_\_\_ (1) SDHQ Switch Pros Keypad Mount

\_\_\_\_\_ (1) 9100 Keypad Mount

SDHQ-14-1131-G6-9100

**OR**

\_\_\_\_\_ (1) RCR-12 Keypad Mount

SDHQ-14-1131-G6-RCR12

\_\_\_\_\_ (1) 3D Printed Spacer

SDHQ-14-1131-G6-B

\_\_\_\_\_ (1) Hardware Package

SDHQ-14-1131-G6-HP

\_\_\_\_\_ (4) #6 - 32 x 3/16" S.S. Button Head Bolts

\_\_\_\_\_ (2) #8 - 32 x 1" S.S. Button Head Bolts

\_\_\_\_\_ (2) #8 - 32 S.S. External Tooth Locknut

\_\_\_\_\_ (2) #8 S.S. Oversized Washers

\_\_\_\_\_ (1) Nylon Spacer 3/8" OD x 11/32" Long

**Inspected and Packaged By:** \_\_\_\_\_ **Date:** \_\_\_\_\_

For questions or help with the installation, please email [help@sdhqoffroad.com](mailto:help@sdhqoffroad.com)  
Store front hours: Mon. – Fri. 8:00am – 5:30pm and Sat. 9:00am – 2:00pm Arizona Time.

For questions or help with the installation, please email [help@sdhqoffroad.com](mailto:help@sdhqoffroad.com)  
Store front hours: Mon. – Fri. 8:00am – 5:30pm and Sat. 9:00am – 2:00pm Arizona Time.



SDHQ Motorsports  
 190 S McQueen Rd  
 Ste 109 Gilbert, AZ 85233  
[www.SDHQoffroad.com](http://www.SDHQoffroad.com)

## INSTALLATION INSTRUCTIONS

**Product:** SDHQ-14-1131-G6-9100/RCR12

**Description:** 2021+ Ford Bronco Overhead Switch Pros Keypad Mount



<u>Parts List</u>	<u>Hardware List</u>	<u>Required Tools</u>
(1) SDHQ 3D Printed Mount Conversion 9100 Keypad SDHQ-14-1131-G6-9100  <u>*OR*</u>  (1) SDHQ 3D Printed Mount Conversion RCR-12 Keypad SDHQ-14-1131-G6-RCR12  (1) 3D Printed Spacer SDHQ-14-1131-G6-B (1) Hardware Package SDHQ-14-1131-G6-HP	(4) #6 – 32 x 3/16” S.S. Button Head Bolts (2) #8 – 32 x 1” S.S. Button Head Bolts (2) #8 – 32 S.S. External Tooth Locknut (2) #8 S.S. Oversized Washers (1) Nylon Spacer 3/8” OD x 11/32” Long	8mm/7mm Sockets T10/T20 Torx Key Panel Removal Tool Pliers Utility Knife 90deg Pick 1/4” Ratchet 5/64” and 3/32” Hex Bits

### **Tech Notes**

This kit fits vehicles that are equipped with or without Upfitter and will replace the sunglasses holder/upfitter switch panel with a Switch Pros keypad conversion mount.

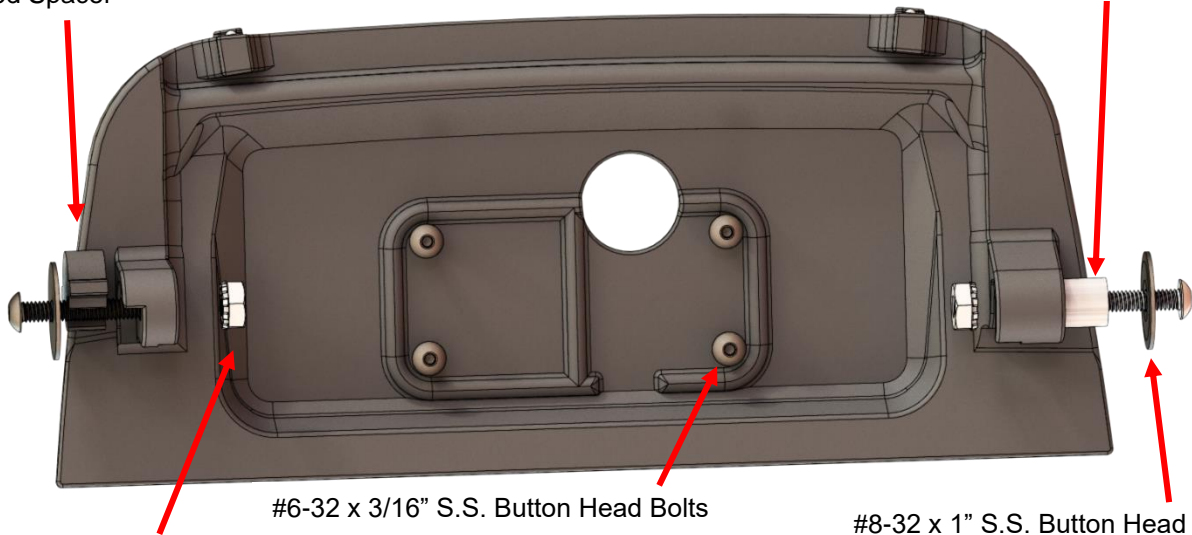
\*\*Approx. Install Time = 1 Hour (not including wiring)\*\*

**\*\*READ ALL INSTRUCTIONS THOROUGHLY FROM START TO FINISH BEFORE BEGINNING INSTALLATION! \*\*\***

For questions or help with the installation, please email [help@sdhqoffroad.com](mailto:help@sdhqoffroad.com)  
 Store front hours: Mon. – Fri. 8:00am – 5:30pm and Sat. 9:00am – 2:00pm Arizona Time.

3D Printed Spacer

3/8" OD x 11/32" Long Nylon Spacer



#6-32 x 3/16" S.S. Button Head Bolts

#8-32 x 1" S.S. Button Head Bolts and Washers

#8-32 External Tooth Lock Nuts

**14-1131-G6-9100**



**14-1131-G6-RCR12**



For questions or help with the installation, please email [help@sdhqoffroad.com](mailto:help@sdhqoffroad.com)  
Store front hours: Mon. – Fri. 8:00am – 5:30pm and Sat. 9:00am – 2:00pm Arizona Time.

## **Installation Instructions:**

1. Unbox all parts and familiarize yourself with them.
2. Starting on driver side, remove your front (2) hardtop panels or open your soft top. Then, using an 8mm socket, remove the (2) bolts on the plastic panel over the door. Now you can pull away the panel using your panel removal tool.



3. Now remove the front latch cover by squeezing the metal clips while pushing down on the panel. Repeat for the opposite side.



4. Remove the sun visor by fully extending the visor away from its pivot, use your removal tool to pop the cover away that is hiding a 7mm screw. Unscrew the pivot and remove the visor, you will need to disconnect the wire harness that comes out with the visor as well. Now using your panel removal tool, open the small door on the back side of the sun visor clip and use your Torx T20 bit to remove the clip.



5. Repeat Steps 2-4 for the passenger side, then you will now be able to pop the A-pillar plastic away from the windshield. The panels will hang by air bag “safety ties” once released from its clips. If needed the nut clip on the A-pillar can be unbolted, using a 7mm socket, to release the panel.

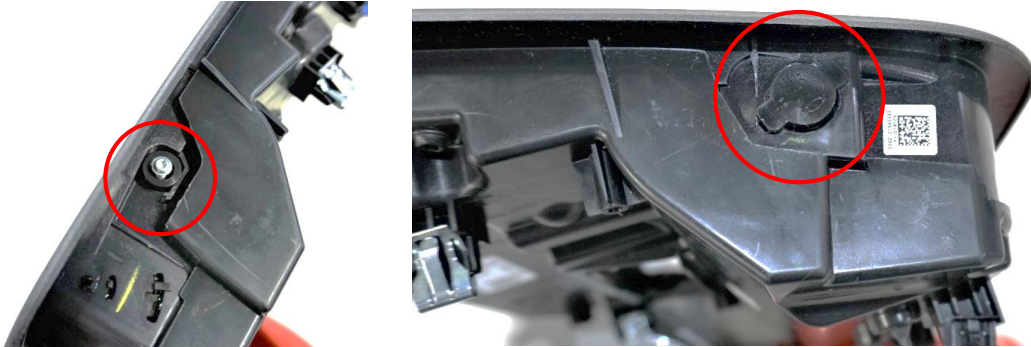


6. With the A-pillar plastic pulled away, you can now pull away the large center plastic panel that the overhead panel is screwed to. Use your panel removal tool to unclip this panel from the roof enough to expose the (4) T20 screws holding the in overhead panel. Unclip the (2), (3) or (4) connectors in the panel depending on if equipped with SOS or Upfitter Switch option. (Note: For the microphone connector you will need to use a pick to unclip the connector)

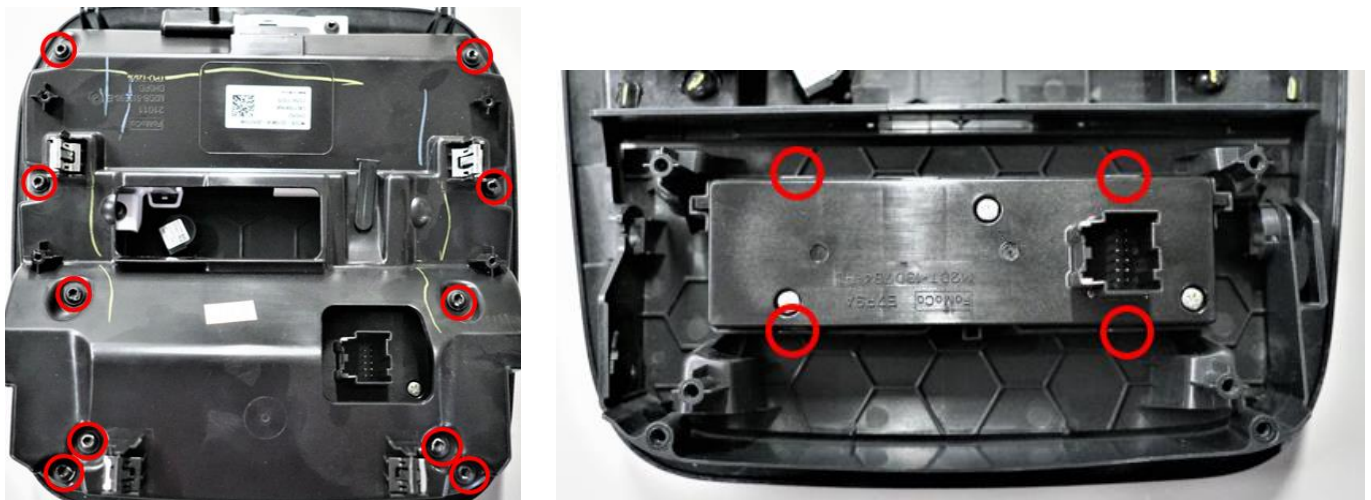


For questions or help with the installation, please email [help@sdhqoffroad.com](mailto:help@sdhqoffroad.com)  
Store front hours: Mon. – Fri. 8:00am – 5:30pm and Sat. 9:00am – 2:00pm Arizona Time.

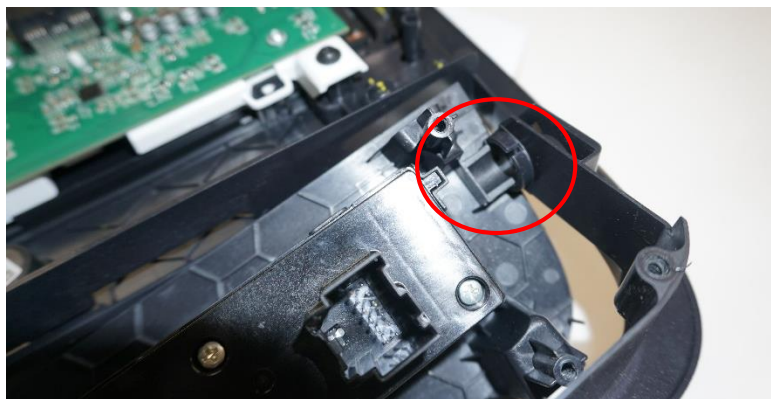
- 7. Non-Upfitter Panels:** Set your overhead console on a table and on one side you will find (1) T10 Torx screw and a small spacer, remove and discard these. The other side of the panel will be a small insert that you will remove with your pick and discard. To remove the sunglasses holder, you will need to move it into the open position and use your pick to unhook the tensioning spring located on the side that formally had the T10 Torx screw. Once the spring is free you can gently pry the sunglasses holder out of the overhead console.



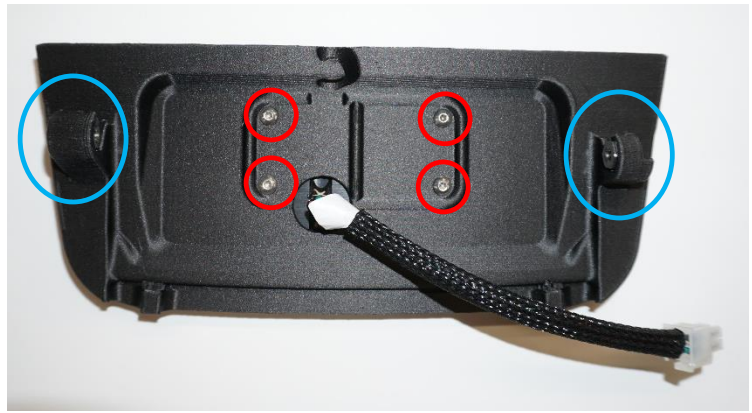
- 8. Upfitter Panels:** Set your panel on a table with the top side up and remove the (10) T20 Torx screws and pull away the black plastic shell. Then locate the Upfitter switch block and carefully pull away the (4) tabs holding it to the panel and remove the switch block.



- 9. Upfitter Panels:** Next remove the upfitters panel from the overhead consol. It is held in by (2) plastic clips on either side. Free one clip from the panel and then slide the panel to the side to release the other clip. This panel will not be reused.



10. Now take your SDHQ 3D printed keypad mount and flip to the backside where you will be inserting (2) #8 locknuts to the **blue** locations. Next install your Switch Pro RCR12 or 9100 with the provided (4) #6 button head screws.



11. Take your factory panel and flip it over to mark out the pass through hole for switch wiring. Mark a  $\frac{3}{4}$ " hole on the angled section as shown and drill it out. **\*\*No drilling is required for Upfitter panels\*\***



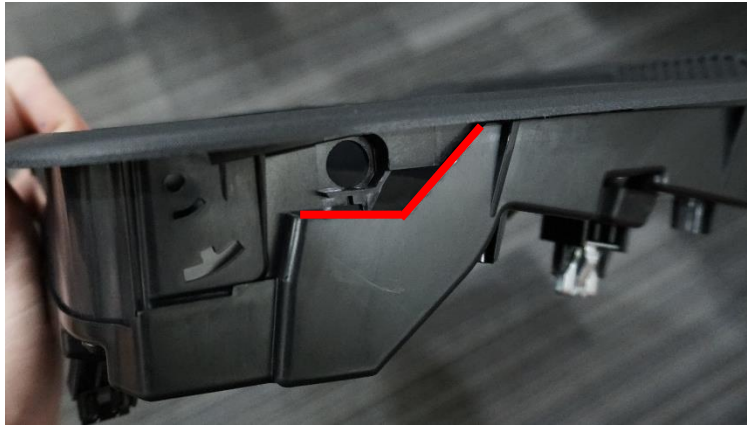
12. On the driver side where the factory insert was previously removed in **step 7**, insert the provided 3D printed spacer as pictured below. This will act as a guide for the new button head bolt.



**For Upfitter Panels:** You will need to cut the passenger side plastic panel as highlighted below. This will expose the other mounting hole location for the #8 bolt.

For questions or help with the installation, please email [help@sdhqoffroad.com](mailto:help@sdhqoffroad.com)  
Store front hours: Mon. – Fri. 8:00am – 5:30pm and Sat. 9:00am – 2:00pm Arizona Time.





13. Using the provided button head bolt and a washer, thread in the side where the 3D printed spacer was previously inserted. Continue to the opposite side where you will be using a nylon spacer, washer, and button head bolt to thread in as shown below.



14. Reverse steps 2-6 to reinstall the overhead console. Be sure to run all necessary wires before completing install. **Enjoy your SDHQ Built Bronco Over Head Key Pad Mount!**



**\*\*\*Double check all hardware is installed correctly and tight\*\*\***

**\*\*\*Re-torque ALL bolts after 100 miles\*\*\***



190 S McQueen Rd  
Ste 109 Gilbert, AZ 85233  
[www.sdhqoffroad.com](http://www.sdhqoffroad.com)

Follow us on:



Facebook



Instagram

For questions or help with the installation, please email [help@sdhqoffroad.com](mailto:help@sdhqoffroad.com)  
Store front hours: Mon. – Fri. 8:00am – 5:30pm and Sat. 9:00am – 2:00pm Arizona Time.