



**SDHQ Motorsports**  
190 S McQueen Rd  
Ste 109 Gilbert, AZ 85233  
Phone: 480-633-2929

## Product Packing List

**Product:** SDHQ-14-1130-G6-9100/RCR12

**Description:** 2021-Current Ford Bronco Upfitter to Switch Pros Conversion

(1) SDHQ Switch Pros 3D Printed Adapter

\_\_\_\_\_ (1) 9100 Keypad 3D Printed Adapter

OR

\_\_\_\_\_ (1) RCR-12 Keypad 3D Printed Adapter

SDHQ-14-1130-G6-9100

SDHQ-14-1130-G6-RCR12

\_\_\_\_\_ (1) SDHQ Laser Cut 3/16" Acrylic Backer

SDHQ-14-1130-G6-A

\_\_\_\_\_ (1) Hardware Package

SDHQ-14-1130-G6-HP

\_\_\_\_\_ (4) #6 - 32 x 1" Zinc Plated Threaded Rods

Inspected and Packaged By: \_\_\_\_\_ Date: \_\_\_\_\_

For questions or help with the installation, please call SDHQ Offroad @ 480-633-2929  
Mon.-Fri. 8:00am-5:30pm and Sat. 8:00am-3:30pm Arizona Time. [www.sdhqoffroad.com](http://www.sdhqoffroad.com)

**For questions or help with the installation, please call SDHQ Offroad @ 480-633-2929  
Mon.–Fri. 8:00am–5:30pm and Sat. 8:00am–3:30pm Arizona Time. [www.sdhqoffroad.com](http://www.sdhqoffroad.com)**



SDHQ Motorsports  
 190 S McQueen Rd  
 Ste 109 Gilbert, AZ 85233  
 Phone: 480-633-2929

## INSTALLATION INSTRUCTIONS

**Product:** SDHQ-14-1130-G6-9100/RCR12

**Description:** 2021-Current Ford Bronco Upfitter to Switch Pros Conversion

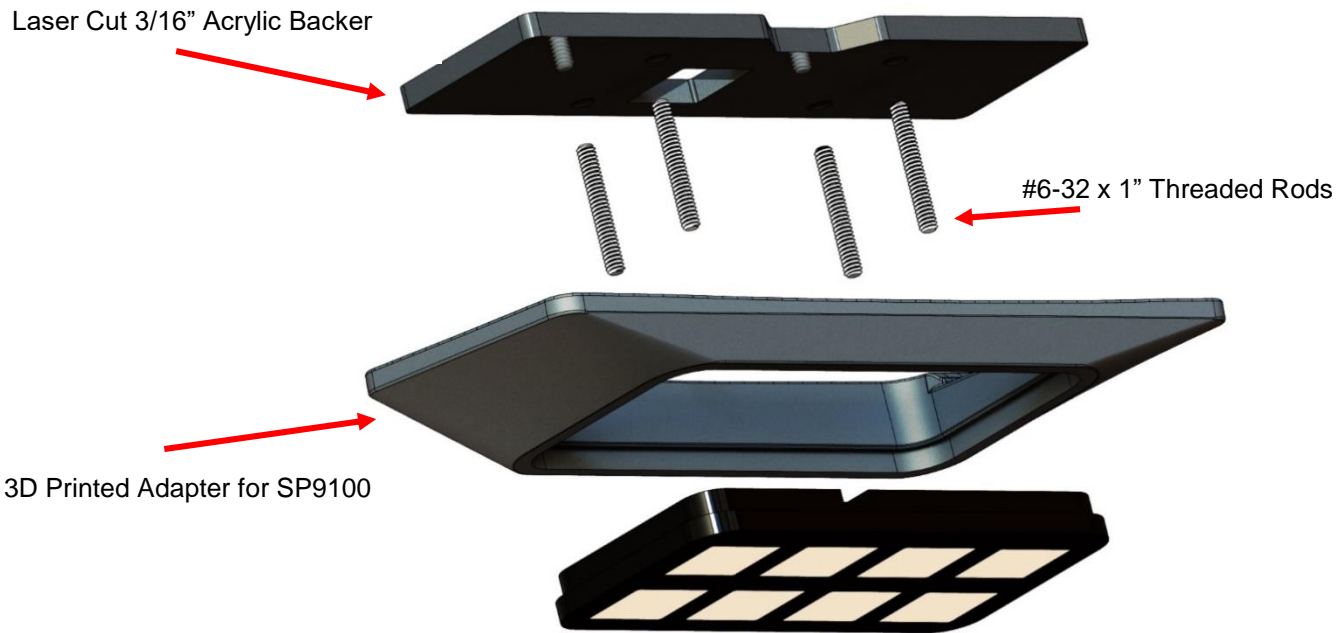


<u>Parts List</u>	<u>Hardware List</u>	<u>Required Tools</u>
(1) SDHQ 3D Printed Adapter for Switch Pros 9100 Keypad SDHQ-14-1130-G6-9100  OR  (1) SDHQ 3D Printed Adapter for Switch Pros RCR-12 Keypad SDHQ-14-1130-G6-RCR12  (1) SDHQ Laser Cut 3/16" Acrylic Backer SDHQ-14-1130-G6-A  (1) Hardware Package SDHQ-14-1130-G6-HP	(4) #6 – 32 x 1" Zinc Plated Threaded Rods	Drill 5/32" Drill Bit 8mm/7mm Sockets T20 Torx Key Panel Removal Tool 90deg Pick 1/4" Ratchet

### **Tech Notes**

A small amount of drilling into the overhead console is required for this install. Instructions show 9100 keypad install, RCR12 is the same except where noted.

\*\* Approx. Install Time = 2 Hours (not including wiring)\*\*



\*\*\*READ ALL INSTRUCTIONS THOROUGHLY FROM START TO FINISH BEFORE BEGINNING INSTALLATION! \*\*\*

## Installation Instructions:

1. Unbox all parts and familiarize yourself with them.
2. **Removing the overhead console.** Starting on driver side, remove your front two hardtop panels or open your soft top. Then, using an 8mm socket, remove the (2) bolts on the plastic panel over the door. Now you can pull away the panel using your panel removal tool.



For questions or help with the installation, please call SDHQ Offroad @ 480-633-2929  
Mon.–Fri. 8:00am–5:30pm and Sat. 8:00am–3:30pm Arizona Time. [www.sdhqoffroad.com](http://www.sdhqoffroad.com)

3. Now remove the outside front latch cover with your panel removal tool and expose the frame underneath.

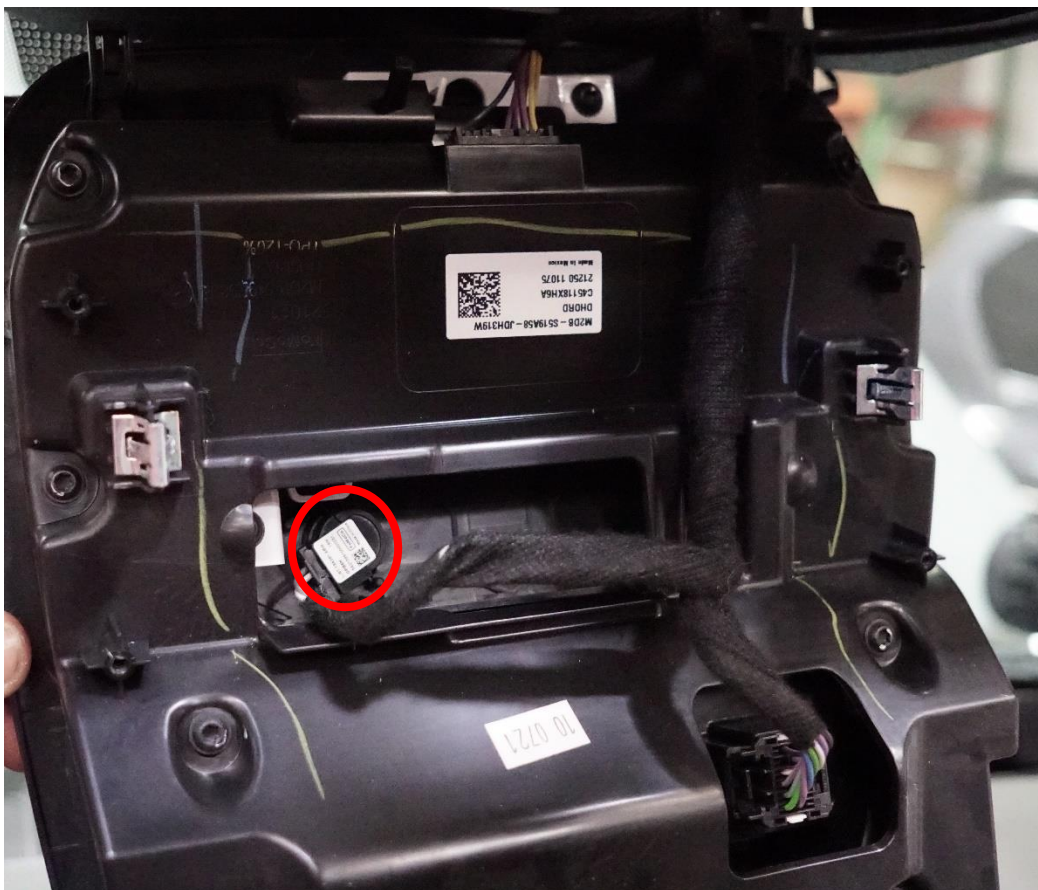


4. Remove the sun visor by fully extending the visor away from its pivot, use your removal tool to pop the cover away that is hiding a 7mm screw. Unscrew the pivot and remove the visor, you will need to disconnect the wire harness that comes out with the visor as well. Now using your removal tool, open the small door on the back side of the sun visor clip and use your Torx T20 bit to remove the clip.

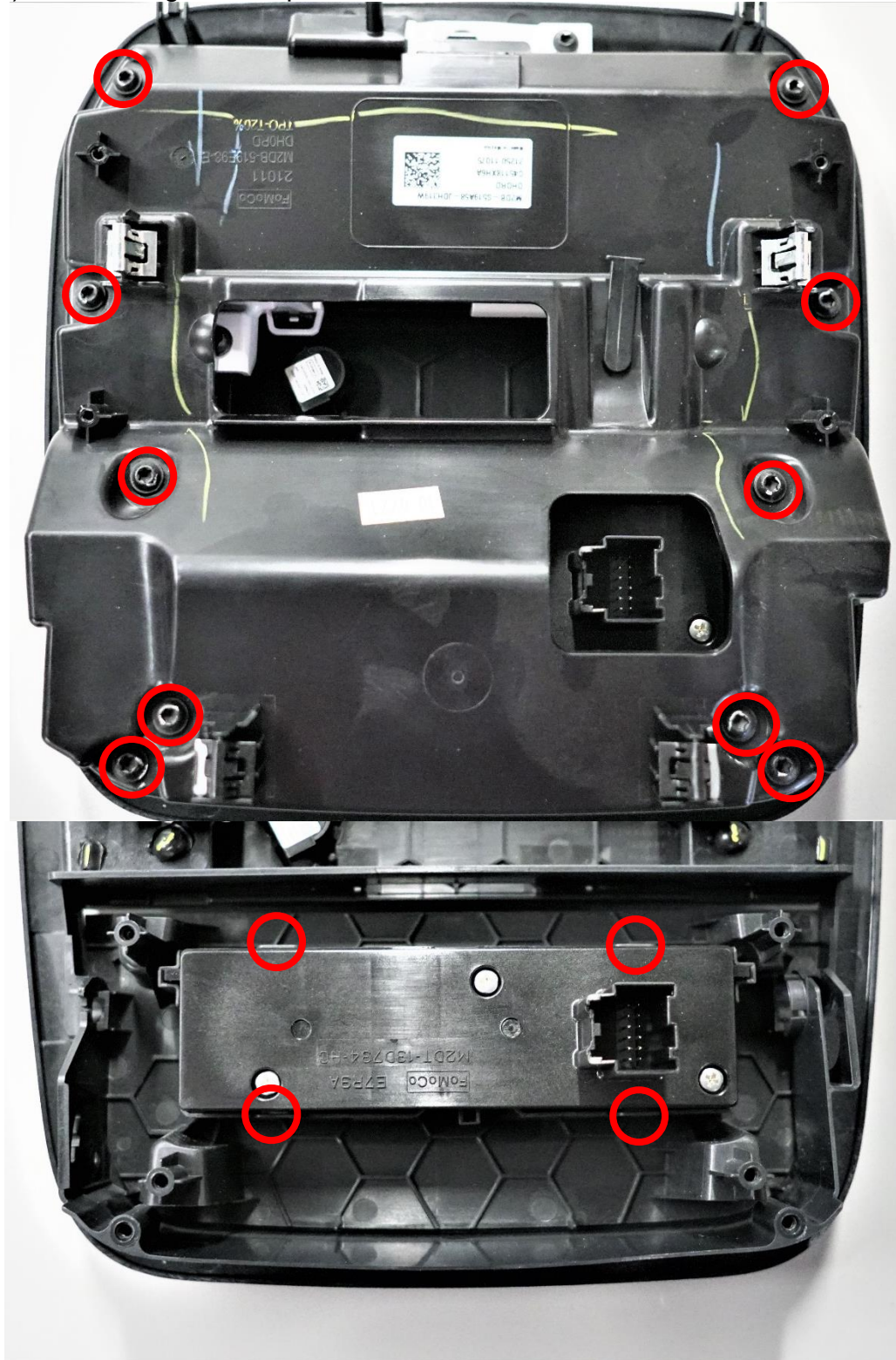


5. Repeat Steps 2-4 for the passenger side, then you will now be able to pop the A-pillar plastic away from the windshield. No need to fully remove these panels.

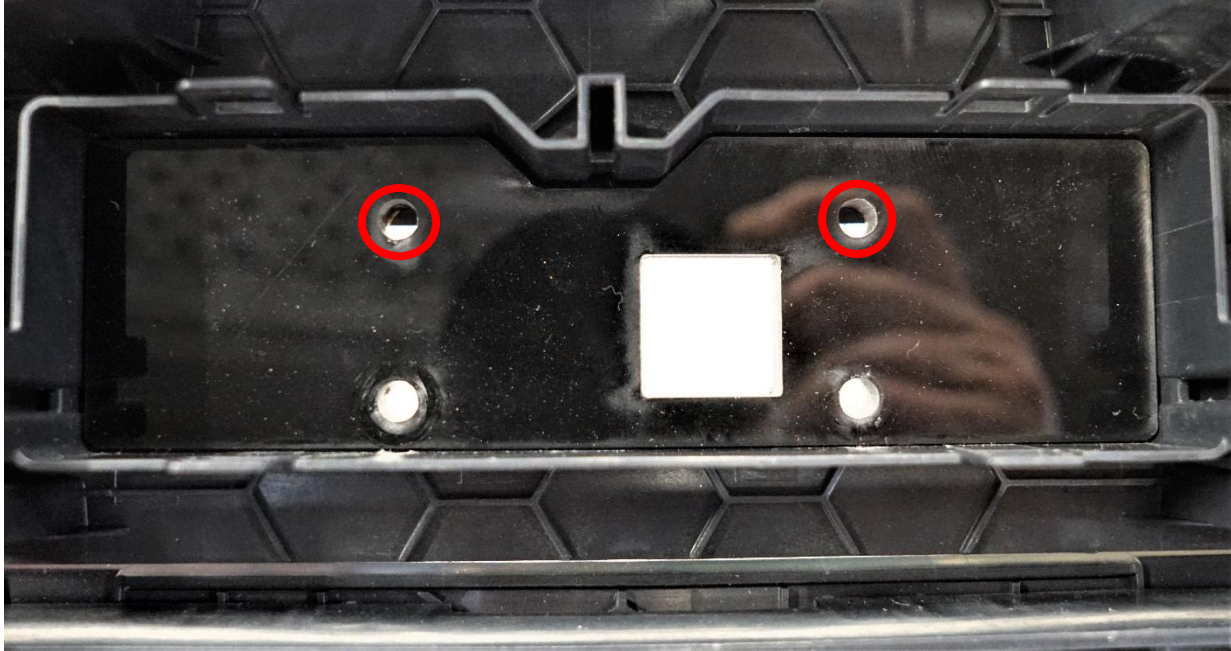
6. With the A-pillar plastic pulled away, you can now pull away the large center plastic panel that the Upfitter panel is screwed to. Use your panel removal tool to unclip this panel from the roof enough to expose and remove the (4) T20 screws holding in the Upfitter Panel. Remove the Upfitter panel with your panel removal tool and unclip the (3) connectors in the panel. (**Note:** For the microphone connector you will need to use a pick to unclip the connector)



7. Set your Upfitter Panel on a table with the top side up and remove the (10) T20 Torx screws and pull away the black plastic shell. Then locate the Upfitter switch block and carefully pull away the (4) tabs holding it to the panel and remove the switch block.



8. **Install Switch Pros Keypad.** Place the 3/16" acrylic backer into the hole formally occupied by the Upfitter switch block as shown and notice the 2 holes that are partially obstructed. Using your 5/32" drill bit, drill through the backer and clear the obstructed holes.



9. Mount your Switch Pros 9100 or RCR-12 in the SDHQ 3D Printed Keypad Mount and thread in the (4) #6-32 x 1" studs into the keypad (**Note:** The RCR-12 Keypad will only use the lower 4 holes for install as shown).



For questions or help with the installation, please call SDHQ Offroad @ 480-633-2929  
Mon.–Fri. 8:00am–5:30pm and Sat. 8:00am–3:30pm Arizona Time. [www.sdhqoffroad.com](http://www.sdhqoffroad.com)



10. Place the keypad and mount on the Upfitter panel so that the studs go through the backer and use the Switch Pros supplied nylock nuts to tighten the keypad to the panel.
11. Follow the reverse of Steps 2-7 to reinstall the overhead console. Be sure to run all necessary wires before completing install. **Enjoy your SDHQ 3D Printed Upfitters to Switch Pros Conversion mount!**



**\*\*\*Double check all hardware is installed correctly and tight\*\*\***

**\*\*\*Re-torque ALL bolts after 100 miles\*\*\***



190 S McQueen Rd  
Ste 109 Gilbert, AZ 85233  
Phone: 480-633-2929 | Fax: 480-633-1791  
[www.sdhqoffroad.com](http://www.sdhqoffroad.com)

Follow us on:



Facebook



Instagram

For questions or help with the installation, please call SDHQ Offroad @ 480-633-2929  
Mon.–Fri. 8:00am–5:30pm and Sat. 8:00am–3:30pm Arizona Time. [www.sdhqoffroad.com](http://www.sdhqoffroad.com)