



SDHQ Motorsports
190 S McQueen Rd
Ste 109 Gilbert, AZ 85233
Phone: 480-633-2929

Product Packing List

Product: SDHQ-13-1650-G13

Description: **2015-2017 Ford F-150 Winch Mount System**

| | |
|--|--------------------|
| _____ (1) Winch Mount | SDHQ-13-1650-G13-A |
| _____ (1) Fairlead Mount | SDHQ-13-1650-G13-B |
| _____ (1) Hardware Package | SDHQ-13-1650-G13-C |
| _____ (2) 3/8" - 16 x 1 1/4" Grade 8 Bolts | |
| _____ (2) 3/8" - 16 Grade 8 Lock Nuts | |
| _____ (4) 3/8" Grade 8 Washers | |

Inspected and Packaged By: _____ **Date:** _____

For questions or help with the installation, please call SDHQ Offroad @ 480-633-2929
Mon.-Fri. 8:00am-5:30pm and Sat. 8:00am-3:30pm Arizona Time. www.sdhqoffroad.com

**For questions or help with the installation, please call SDHQ Offroad @ 480-633-2929
Mon.–Fri. 8:00am–5:30pm and Sat. 8:00am–3:30pm Arizona Time. www.sdhqoffroad.com**



SDHQ Motorsports
 190 S McQueen Rd
 Ste 109 Gilbert, AZ 85233
 Phone: 480-633-2929

INSTALLATION INSTRUCTIONS

Product: SDHQ-13-1650-G13

Description: 2015-2017 Ford F-150 Winch Mount System



| <u>Parts List</u> | <u>Hardware List</u> | <u>Required Tools</u> |
|---|--|--|
| (1) Winch Mount SDHQ-13-1650-G13-A (1) Fairlead Mount SDHQ-13-1650-G13-B (1) Hardware Package SDHQ-13-1650-G13-C | (2) 3/8" – 16 x 1 1/4" Grade 8 Bolts (2) 3/8" – 16 Grade 8 Locknuts (4) 3/8" Grade 8 Washers | Door Panel Removal Tool Needle Nose Pliers 10mm Socket or Wrench, 21mm Socket 1/2", 9/16" Socket and Wrench 3/8", 1/2" Drive Ratchet or Impact T25 & T30 Torx Floor Jack |

Tech Notes

***Does Not Fit Eco-Boost Models**, due to Location of the Charge Air Cooler.

*No drilling required / cutting of plastic bumper insert required.

*Designed around the Warn Zeon Platinum Series Winch for its Full Wireless Capability

*Warn Zeon Series Winch require **SDHQ Zeon Winch Kit (SDHQ-12-1660-G13)**.

*Whipple supercharged trucks require **SDHQ Whipple Off-Road Kit (SDHQ-13-1120-G13)**

Winch Fitment

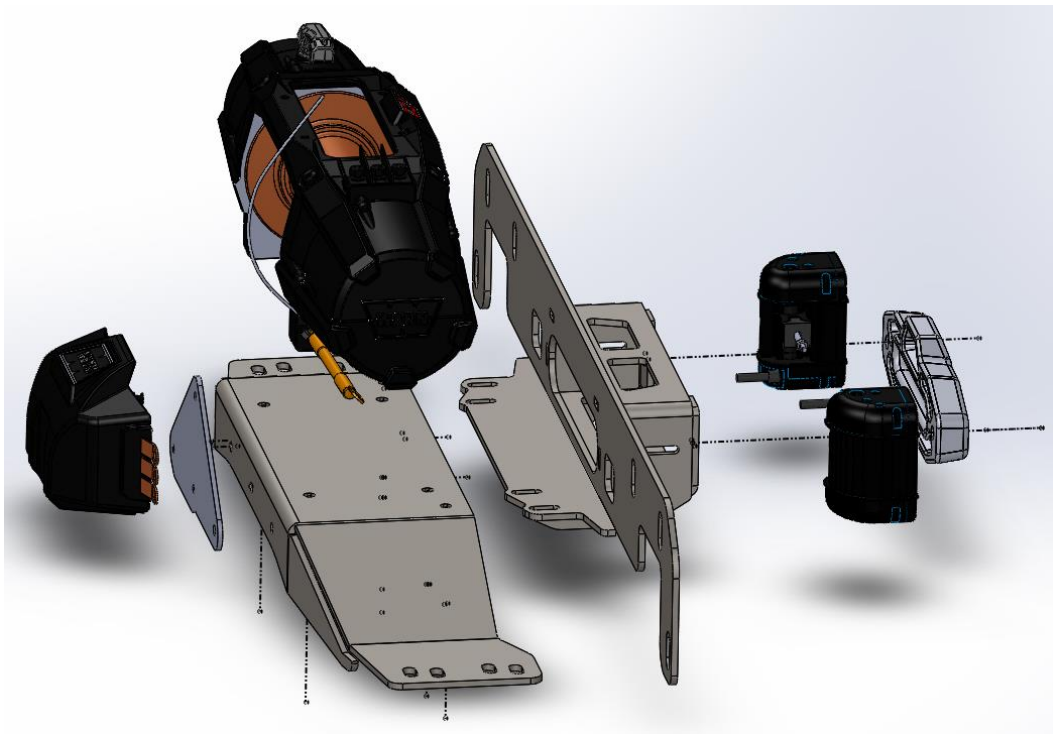
Recommended Best Fit: (Advanced Wireless Remote- Spool and Clutch Control. Wireless Control of 2 12v Lights or accessories)

- Warn Zeon Platinum Series 10/12 Series (**Requires SDHQ-13-1660-G13 Zeon Winch Kit**)

Also Fits:

* Warn 90287 Wireless Remote Spool Control Upgrade or Warn 14867 2ft Remote Socket Extension recommended

- Warn Zeon 8/10/12 (**Requires SDHQ-13-1660-G13 Zeon Winch Kit**)
- Warn 9.5xp (Control Box will need to be mounted under hood or under winch)
- Other winches may fit, but Control Box mounting will be required.



*****READ ALL INSTRUCTIONS THOROUGHLY FROM START TO FINISH BEFORE BEGINNING INSTALLATION! *****

Installation Instructions:

1. Unbox your SDHQ Hidden Winch Mount and check over all of the parts. Familiarize yourself with the parts. If a Warn Zeon Relocation Kit (SDHQ-13-1660-G13) was purchased, follow those instructions provided prior to proceeding.

For questions or help with the installation, please call SDHQ Offroad @ 480-633-2929
Mon.–Fri. 8:00am–5:30pm and Sat. 8:00am–3:30pm Arizona Time. www.sdhqoffroad.com

2. **Removing the bumper.** Unplug the fog lamp connectors. Remove the clips holding the rubber radiator shroud to the bumper. With help, remove the (10) 13mm head bolts holding the bumper to the bumper brackets. Two bolts are hidden above the frame rails on the top part of the bracket. The bumper can be removed from the truck now.



3. Remove the bumper brackets from the truck frame with a 21mm socket. Remove the plastic covers on the tow hooks. With a 15mm socket, remove the two bolts securing the tow hooks and set aside.

4. Carefully cut back the rubber radiator splash guard as far back as possible as it interferes with the winch. Remove the clips on both sides and discard.

5. Remove the plastic insert from the center of the bumper with needle nose pliers and set aside.

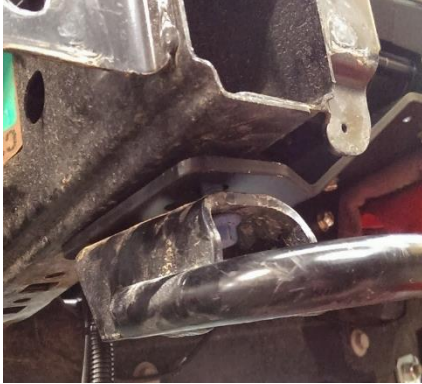
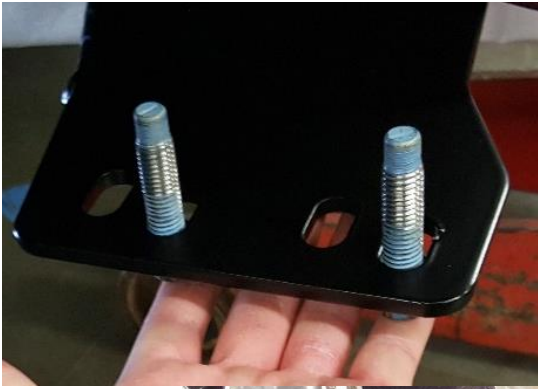


6. With the plastic insert removed, the bumper brackets can be reinstalled to the bumper via the 13mm head factory bolts.

7. **Installing the winch.** Install your winch to the SDHQ Winch Mount and attach the winch line to the drum per winch manufacturer's specifications. Attachment of the winch line may not be possible once the winch is installed onto the vehicle.

8. **Installing the Winch Mount.** Place the assembled Winch Mount and winch on a jack with rags or a towel to avoid scratching the powder coat. Raise the mount into place lining up the front set of slots to the center of the existing tow hook bolt holes. It is a tight fit, so keep an eye on clearances while raising into place. Using the factory tow hooks and bolts, bolt the tow hooks through the winch mount into the frame. Make sure to align the factory nut clip inside the frame rail. Leave slightly loose for adjustments.





9. Check the clearance between the winch wires and transmission cooler line. It may be necessary to slightly bend the transmission cooler line bracket back for more clearance.

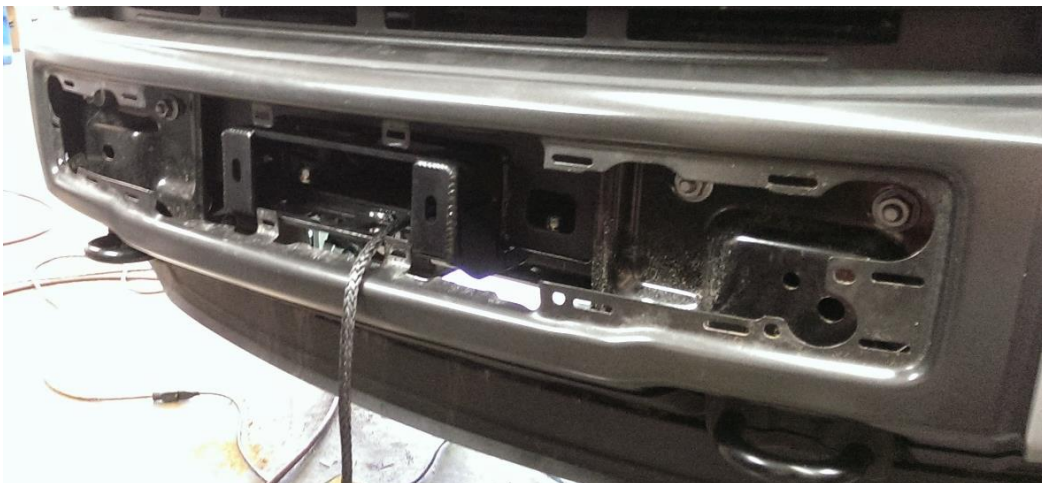
10. **Installing the Fairlead Mount.** Remove the (2) front bolts that bolt the winch to the Winch Mount. Position the Fairlead Mount into place over the bumper mount slots and under the Winch Mount. Thread the (2) longer Winch Mount bolts (provided with the winch for a Fairlead Mount) through the Fairlead Mount, Winch Mount and into the winch. Leave slightly loose for adjustments. Bolt the (2) 3/8" – 16 x 1 1/4" Grade 8 Bolts through the remaining (2) holes connecting the Fairlead Mount to the Winch Mount.



11. Adjust the Winch Mount and Fairlead Mount as needed to get the Fairlead Mount centered with the bumper bracket holes. Tighten the Tow Hook bolts when centered. With the Fairlead Mount pushed all the way back against the frame horns, begin tightening the (4) bolts that attach the Fairlead Mount to the Winch Mount. Start with the (2) bolts in the center, then tighten the (2) outer bolts. Tighten the rear bolts that bolt the winch to the Winch Mount.
12. Route the winch cables up into the engine compartment. As pictured, route the cables through the core support by trimming the wire loom on the positive cable. Attach the cables to the battery. The red wire is positive, the black wire is negative. .



13. Place the top bumper bracket studs in their slots, use a piece of tape to hold them in place if necessary. Carefully install the bumper and thread on the 21mm nuts to all (6) bumper bolts. Align the bumper to the truck accordingly, and tighten the bolts. Note: the rubber blocks on the ends of the bumper should not be compressed, but just touching the bumper.



14. Trim the plastic insert as outlined on the following pages.

Plastic Insert Variations/Options

➤ **Option 1: Factory Plastic**

- Fairlead Cut out only



- Center the Winch mounting holes on the plastic insert. The mounting holes will be 10" apart, centered on the middle horizontal rib. The tall top edge will be lined up with the top inner edge as pictured. Mark the center of the holes and drill out to 7/16" starting with a small pilot bit.



- Lay your Fairlead on top of the plastic insert and slide the bolts provided with your winch through the fairlead and holes in the plastic. Use a non-permanent marker or pencil to mark the outline of the Fairlead.
- Cut out the plastic on the inside of your marked outline. For best fitment, start slow and work your way out test fitting the Fairlead from the back side of the plastic insert as you go. The Warn Fairlead is tapered, so when fitted tight like pictured it will not fit through the front.

➤ **Option 2: Factory Plastic with Vision X Lights**

- Fairlead and Lights Cut



- Follow the same steps as outlines in **Option 1** for the Fairlead.
- Mark a line 3" off of the edge of the plastic insert. Mark around the inner edge the outer edge and around the ribs.
- Cut out the outlined rectangular section for the lights. Cut the small middle section between the lights and the edge of the winch opening as pictured.



➤ **Option 3: Factory Plastic with Vision X Lights, SDHQ Fill Plate**

- Center section Cut



- Mark the plastic insert along the inner top and bottom edges and on the sides around the ribs as shown in the picture below.
- Cut out the section and clean up the edges.



15. Now install the Fairlead to the Fairlead Mount using the hardware provided with the winch. The best way to access the Fairlead bolts is from underneath through the cutouts. Tape may aid in holding the bolts in place while sliding the Fairlead over them, or just an extra set of hands. Leave the Fairlead slightly loose at this point.
16. Carefully install the plastic insert into your bumper aligning the Fairlead with the hole cut into the plastic. Once the plastic is snapped into place, the Fairlead bolts can be tightened. Tighten the remaining Winch Mount and Fairlead Mount bolts. Install the lights. Installation is complete! Power on your winch and spool your line according to the winch manufacturer's instructions.

*****Double check all hardware is installed correctly and tight*****

*****Re-torque ALL bolts after 100 miles*****



190 S McQueen Rd
Ste 109 Gilbert, AZ 85233
Phone: 480-633-2929 | Fax: 480-633-1791
www.sdhqoffroad.com

Follow us on:



Facebook



Instagram

For questions or help with the installation, please call SDHQ Offroad @ 480-633-2929
Mon.–Fri. 8:00am–5:30pm and Sat. 8:00am–3:30pm Arizona Time. www.sdhqoffroad.com