



SDHQ Motorsports
190 S McQueen Rd
Ste 109 Gilbert, AZ 85233
Phone: 480-633-2929

Product Packing List

Product: SDHQ-13-1650-G12

Description: 09-14 Ford F-150/Raptor Winch Mount System

_____ (1) Winch Mount	SDHQ-13-1650-G13-A
_____ (1) Fairlead Mount	SDHQ-13-1650-G12-B
_____ (1) Hardware Package	SDHQ-13-1650-G12-C
_____ (2) 3/8" - 16 x 1" Grade 8 Bolts	
_____ (2) 3/8" - 16 x 1 1/2" Grade 8 Bolts	
_____ (6) 3/8" Grade 8 Flat Washers	
_____ (2) 3/8" - 16 Grade 8 Lock Nuts	
_____ (2) 5/8" - 11 x 1 1/2" Grade 8 Bolts	
_____ (4) 5/8" Grade 8 Flat Washers	
_____ (2) 5/8" - 11 Grade 8 Lock Nuts	

Inspected and Packaged By: _____ **Date:** _____

For questions or help with the installation, please call SDHQ Offroad @ 480-633-2929
Mon.-Fri. 8:00am-5:30pm and Sat. 8:00am-3:30pm Arizona Time. www.sdhqoffroad.com

**For questions or help with the installation, please call SDHQ Offroad @ 480-633-2929
Mon.–Fri. 8:00am–5:30pm and Sat. 8:00am–3:30pm Arizona Time. www.sdhqoffroad.com**



SDHQ Motorsports
 190 S McQueen Rd
 Ste 109 Gilbert, AZ 85233
 Phone: 480-633-2929

INSTALLATION INSTRUCTIONS

Product: SDHQ-13-1650-G12

Description: 09-14 Ford F-150/Raptor Winch Mount System



Parts List	Hardware List	Required Tools
(1) Winch Mount SDHQ-13-1650-G13-A (1) Fairlead Mount SDHQ-13-1650-G12-B (1) Hardware Package SDHQ-13-1650-G12-C	(2) 3/8" - 16 x 1" Grade 8 Bolts (2) 3/8" - 16 x 1 1/2" Grade 8 Bolts (6) 3/8" Grade 8 Flat Washers (2) 3/8" - 16 Grade 8 Lock Nuts (2) 5/8" - 11 x 1 1/2" Grade 8 Bolts (4) 5/8" Grade 8 Flat Washers (2) 5/8" - 11 Grade 8 Lock Luts	5.5mm socket or wrench 8mm socket or wrench 10mm socket or wrench 15mm socket or wrench 18mm socket or wrench 21mm socket or wrench Flat head screwdriver, or panel removal tool 5/8" metal drill bit

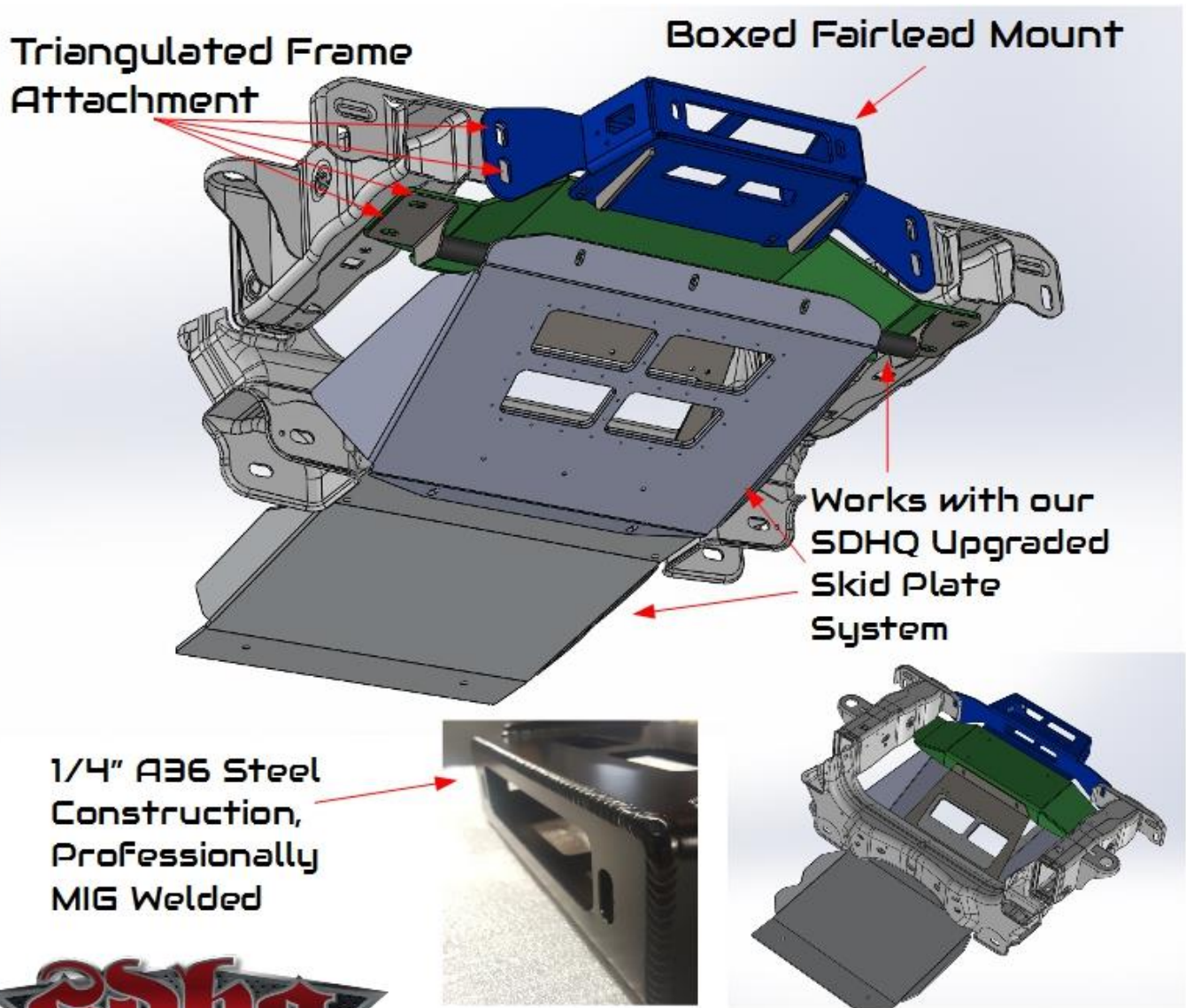
Tech Notes

The SDHQ Winch mount was designed specifically for use on the Ford Raptor but will work on all other 2009-2014 Ford F150s with the exception of the Ecoboost. Installation of the Winch Mount will utilize the rear/ narrower set of slots.

Known Warn winches that fit:

- Zeon 8, 8-s, 10, 10-s, and 12
- Zeon platinum 10, 10-s, and 12
- Power plant 9.5 (with minor trimming on plastic winch housing)
- 9.5xp, 9.5xp-s, 9.5cti, 9.5cti-s
- XD9000i, XD9000

(The SDHQ Winch Mount System has been designed to fit a wide range of Warn winches. While other brands may work, we cannot confirm their fitment.)



For questions or help with the installation, please call SDHQ Offroad @ 480-633-2929
Mon.–Fri. 8:00am–5:30pm and Sat. 8:00am–3:30pm Arizona Time. www.sdhqoffroad.com

*****READ ALL INSTRUCTIONS THOROUGHLY FROM START TO FINISH BEFORE BEGINNING INSTALLATION! *****

Installation Instructions:

1. Remove the (4) 5.5mm bolts holding the plastic bumper insert on. Bend the (4) mounting tabs up for fairlead clearance.



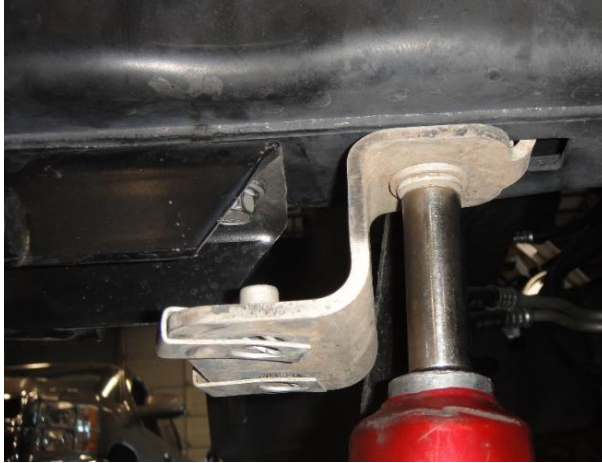
2. Remove the 3 push clips holding the rubber dust guard on. Remove the (6) 15mm bolts holding the factory skid plate on. Remove the skid plate.



3. **Removing the bumper.** Remove the (2) 10mm bolts holding the plastic valance to the upper portion of the bumper. Remove the (4) 21mm nuts holding the bumper on, and remove the bumper.



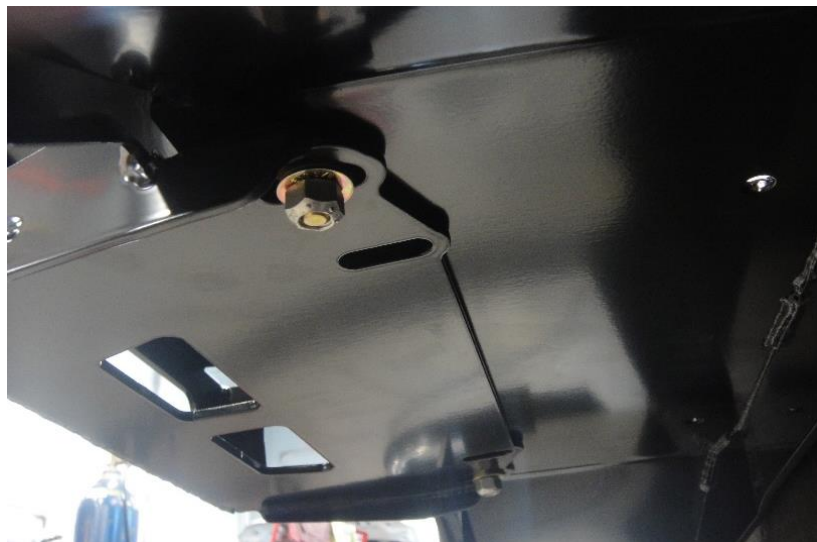
4. Remove the front skid plate brackets and factory tow hooks by removing the (6) 15mm bolts mounting them.



5. Install the Winch Mount between the factory tow hooks and the frame using the factory hardware. Install so bends raise the plate up, and the brace is toward the rear of the truck. Use the rear set of slotted holes (narrower set) to install.



6. Bolt the Fairlead Mount to the underside of the Winch Mount using the 2 outer bolts only.



7. Drill a 5/8" hole on each side of the frame through the lower slotted hole of the Fairlead Mount.



8. Bend back, or cut off the 1" tab on the factory bumper so it does not interfere with the Winch Mount.

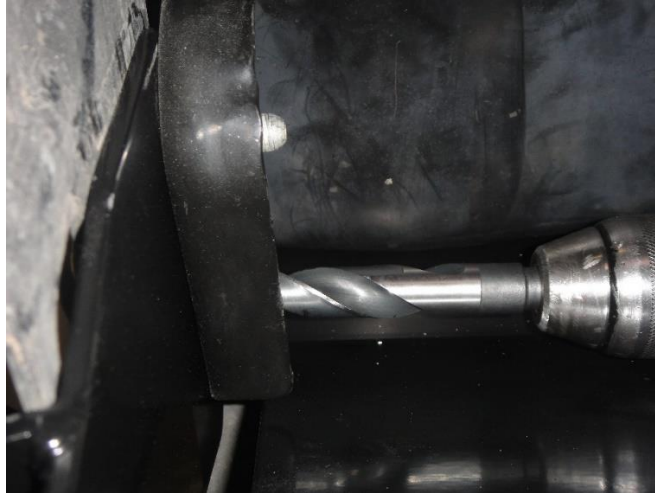


9. Reinstall the front bumper using the factory hardware.



For questions or help with the installation, please call SDHQ Offroad @ 480-633-2929
Mon.–Fri. 8:00am–5:30pm and Sat. 8:00am–3:30pm Arizona Time. www.sdhqoffroad.com

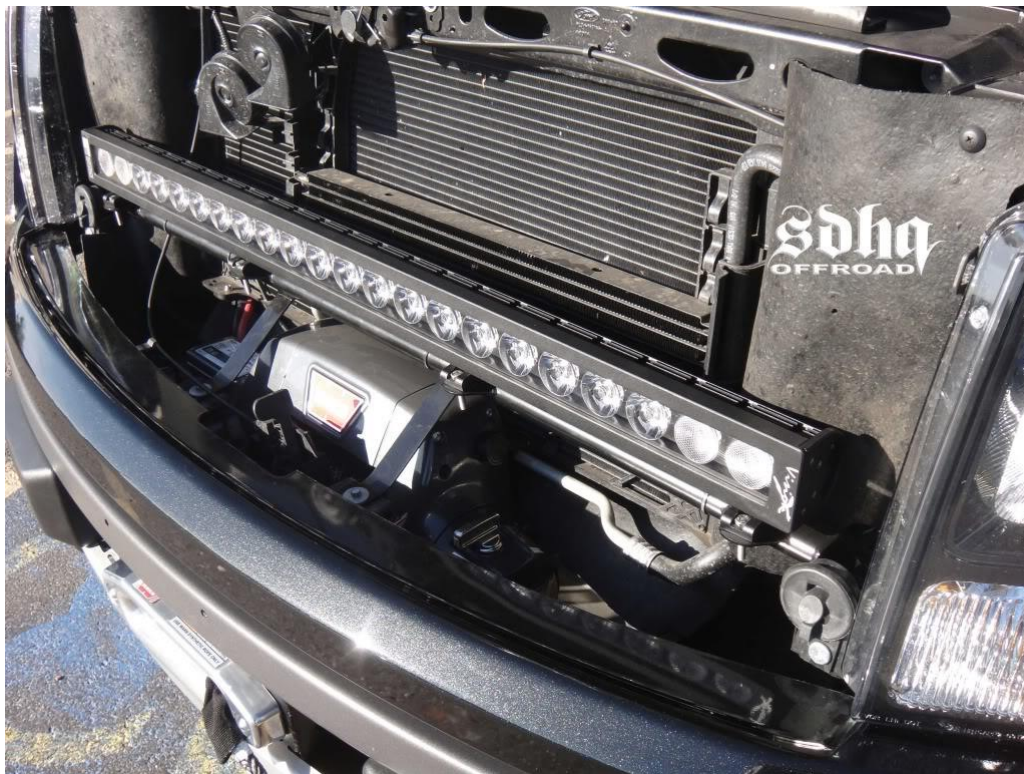
- 10.** Using the first holes you drilled in the frame as a guide, drill (2) more 5/8" holes through the bumper.



- 11.** Bolt the front bumper, Winch Mount, and frame together using the supplied 5/8" hardware.
- 12.** Install the winch from the top, in between the hood latch and radiator. Use the longer supplied hardware for the front bolts, and the winch hardware for the rear of the winch.
- 13.** You can now wire your winch according to the manufacturers specifications and spool your winch.



- 14.** Reinstall the factory skid plate brackets and skid plate.



*****Double check all hardware is installed correctly and tight*****

*****Re-torque ALL bolts after 100 miles*****



190 S McQueen Rd
Ste 109 Gilbert, AZ 85233
Phone: 480-633-2929 | Fax: 480-633-1791
www.sdhqoffroad.com

Follow us on:



Facebook



Instagram

For questions or help with the installation, please call SDHQ Offroad @ 480-633-2929
Mon.–Fri. 8:00am–5:30pm and Sat. 8:00am–3:30pm Arizona Time. www.sdhqoffroad.com