



SDHQ Motorsports
190 S McQueen Rd
Ste 109 Gilbert, AZ 85233
Phone: 480-633-2929

Product Packing List

Product: SDHQ-13-1540-G13

Description: 2017+ Ford Raptor/2015+ F-150 Weld-On Sliders

_____ (1) Driver Side Slider	SDHQ-13-1540-G13-A
_____ (1) Passenger Side Slider	SDHQ-13-1540-G13-B
_____ (2) Front Mounting Plates	SDHQ-13-1540-G13-C
_____ (2) Middle Mounting Plates	SDHQ-13-1540-G13-D
_____ (2) Rear Mounting Plates	SDHQ-13-1540-G13-E
_____ (1) Hardware Package	SDHQ-13-1540-G13-F
_____ (3) 1/4" - 20 Rivet Nuts	
_____ (3) 1/4" - 20 x 3" Threaded Studs	
_____ (3) 1/4" Grade 8 Nuts	
_____ (3) 1/4" Grade 8 Washers	
_____ (3) 1/4" Grade 8 Lock Washers	

Inspected and Packaged by: _____ Date: _____

**For questions or help with the installation, please call SDHQ Offroad @ 480-633-2929
Mon.–Fri. 8:00am–5:30pm and Sat. 9:00am–2:00pm Arizona Time. www.sdhqoffroad.com**



SDHQ Motorsports
 190 S McQueen Rd
 Ste 109 Gilbert, AZ 85233
 Phone: 480-633-2929

INSTALLATION INSTRUCTIONS

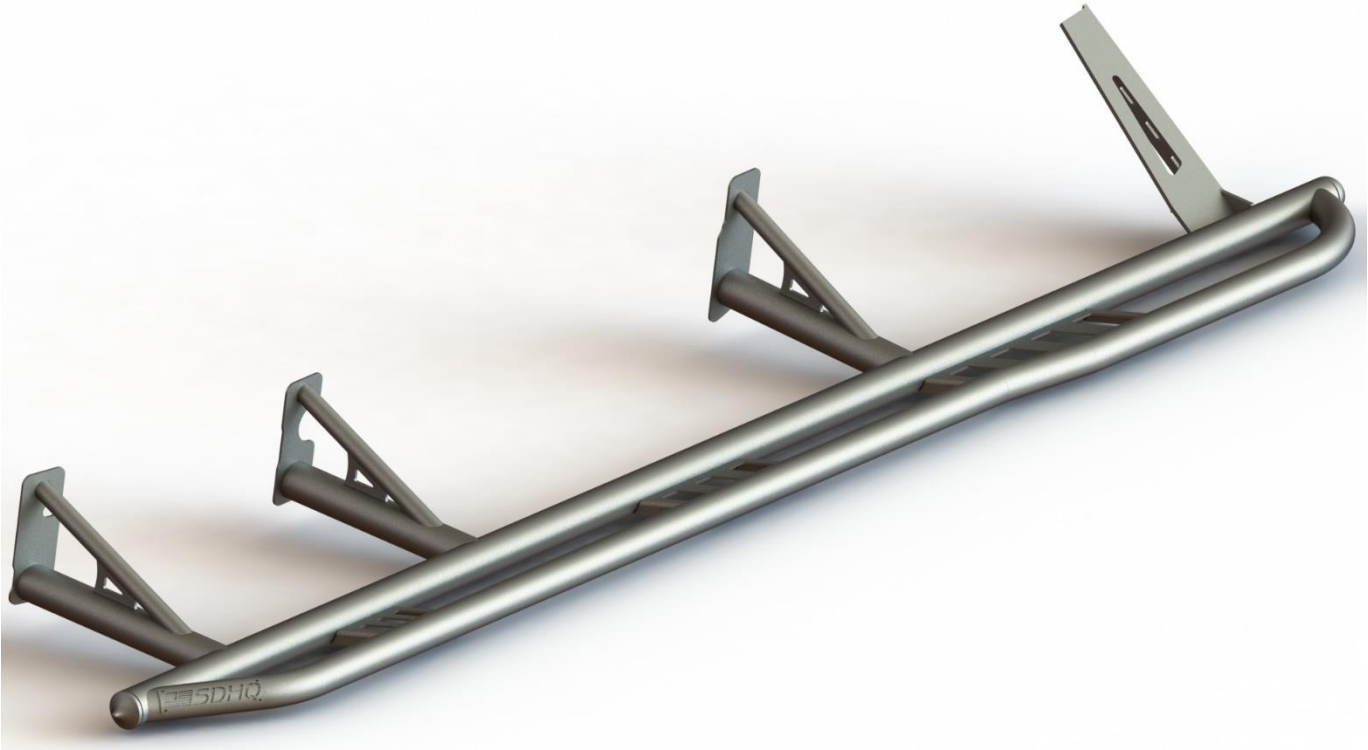
Product: *SDHQ-13-1540-G13*

Description: 2017+ Ford Raptor/2015+ F-150 Weld-On Sliders



Parts List	Hardware List	Required Tools
(1) Driver Side Slider SDHQ-13-1540-G13-A (1) Passenger Side Slider SDHQ-13-1540-G13-B (2) Front Mounting Plates SDHQ-13-1540-G13-C (2) Middle Mounting Plates SDHQ-13-1540-G13-D (2) Rear Mounting Plates SDHQ-13-1540-G13-E (1) Hardware Package SDHQ-13-1540-G13-F	(3) 1/4" – 20 Rivet Nuts (3) 1/4" – 20 x 3" Threaded Studs (3) 1/4" Grade 8 Nuts (3) 1/4" Grade 8 Washers (3) 1/4" Grade 8 Lock Washers	13mm, 17mm, 18mm Sockets Ratchet 2 Jack Stands Sanding Equipment Welder Heat Shielding for welding 25/64" Drill Bit Punch Rivet Nut Tool
Tech Notes		
Factory mounts for the fuel control box and parking brake cables will need to be relocated. Professional Installation REQUIRED . Fits 2015+ Ford F150, 2017+ Ford Raptor Super Crew 5.5' beds only **Approximate install: 8-10 hours**		

For questions or help with the installation, please call SDHQ Offroad @ 480-633-2929
 Mon.–Fri. 8:00am–5:30pm and Sat. 9:00am–2:00pm Arizona Time. www.sdhqoffroad.com



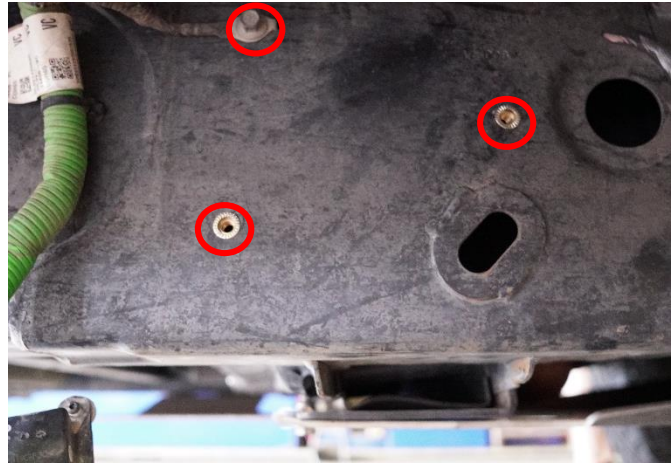
*****READ ALL INSTRUCTIONS THOROUGHLY FROM START TO FINISH BEFORE BEGINNING INSTALLATION! *****

Installation Instructions:

1. Unbox all of your parts and familiarize yourself with them.
2. **Preparing your truck.** Start by removing the factory Raptor running boards (if equipped). Remove the (6) nuts holding the boards to the body.
3. On the driver side, the parking brake lines can be un-bolted from the vehicle using a 13mm socket. Once the bolt is removed, pull the brake cables and gas lines away from the frame. Pull them straight out away from the frame disconnecting the clips as shown in red. Pull the cables and lines as far away from the frame without damaging them and secure them. This is to assist in preventing the lines from overheating during the welding process.



4. For 2017-2020 Raptors, on the passenger side, the fuel control box will have to be relocated. The first picture shows its original position. The last picture shows the new position. Certain Raptor frames will have pre-existing mounting points for the box. Ones without the factory holes will need to be drilled with a 25/64" drill bit. Once drilled, insert the (3) rivet nuts using the rivet nuts tool. Re-mount the box in its new position and secure it with (3) 1/4" studs and washers.

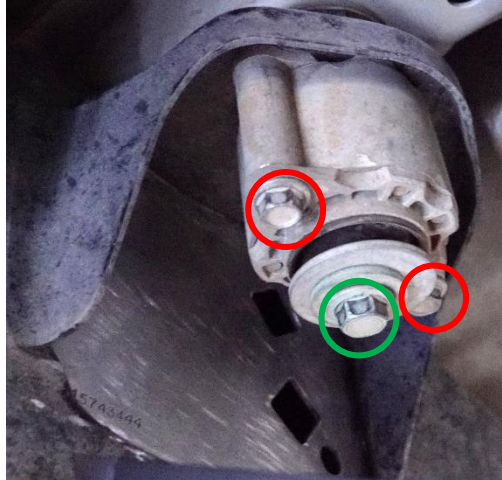


For 2021+ Raptor, on the driver side, you will find a fuel control box that is close to the rear middle leg of the slider. The control box does not need to be moved, but the wire harness interferes with fitment of the weld on plate, and will need to be moved before welding.



For questions or help with the installation, please call SDHQ Offroad @ 480-633-2929
Mon.–Fri. 8:00am–5:30pm and Sat. 9:00am–2:00pm Arizona Time. www.sdhqoffroad.com

5. The body mounts located above the leaf spring mounts will have to be removed to make it accessible to clean. This can be done by removing the (2) 17mm bolts circled in red and (1) 18mm bolt circled in green.



6. Clean the frame from front to rear as pictured below on the driver and passenger side. Once the frame is clean, the body mounts from step 5 can be reinstalled.

Driver Side:



Front Mounting Point



Mid-Front Mounting Point



Mid-Rear Mounting Point



Rear Mounting Point

7. Before welding anything, wrap all gas lines and hoses that will be close to welds in heat shielding. I.e. Heat shielding blanket, Water soaked cloths, heat shielding gel, etc.



8. **Review Step 7!** After the frame is cleaned, align where the plates need to be welded and tack weld the plates to the frame. Pictures shown front to rear.

Driver Side:



Passenger Side:



9. **Review Step 7!** Mock up the sliders to the plates and make sure all of the legs are centered on the plates. If they are not centered, move the plates to the appropriate location. When they are centered, fully weld the plates.



For questions or help with the installation, please call SDHQ Offroad @ 480-633-2929
Mon.–Fri. 8:00am–5:30pm and Sat. 9:00am–2:00pm Arizona Time. www.sdhqoffroad.com

- 10. Review Step 7!** Use 2 floor jacks to mock up the sliders and hold them in place. While they are being mocked up, be sure to open the doors to be sure of clearance. Also, be sure to route the parking brake cables through the middle of the sliders. Once the sliders are mocked up and the doors will not hit, tack weld the sliders to the plates. Now open the doors to double check that they do not hit the sliders. If the doors do not hit, fully weld the sliders to the plates. Also, weld the rear support as well as shown below on the right.



- 11.** Now the gas lines can be installed into the factory location. The parking brake lines will need to have their rear mount relocated. The tab on the mount will need to be bent straight along the red line and moved up to a higher location as shown below.



- 12.** Paint any bare metal surfaces to prevent rust.

- 13. Enjoy your SDHQ chromoly Raptor Sliders!**



*****Double check all hardware is installed correctly and tight*****

*****Re-torque ALL bolts after 100 miles*****



190 S McQueen Rd
Ste 109 Gilbert, AZ 85233
Phone: 480-633-2929 | Fax: 480-633-1791
www.sdhqoffroad.com

Follow us on:



Facebook



Instagram

For questions or help with the installation, please call SDHQ Offroad @ 480-633-2929
Mon.–Fri. 8:00am–5:30pm and Sat. 9:00am–2:00pm Arizona Time. www.sdhqoffroad.com