



SDHQ Motorsports
190 S McQueen Rd
Ste 109 Gilbert, AZ 85233
Phone: 480-633-2929

Product Packing List

Product: SDHQ-13-1406-G13

Description: 2015+ Ford F-150/Raptor 1" Lowering Shackles

| | |
|--------------------------------------|------------------|
| _____ (2) SDHQ F-150/Raptor Shackles | SDHQ-13-1406-G13 |
| _____ (2) SDHQ F-150/Raptor Shackles | |
| _____ (4) PRM-600 bushings | |
| _____ (2) Inner Sleeves | |

Inspected and Packaged By: _____ **Date:** _____

For questions or help with the installation, please call SDHQ Offroad @ 480-633-2929
Mon.-Fri. 8:00am-5:30pm and Sat. 8:00am-3:30pm Arizona Time. www.sdhqoffroad.com

**For questions or help with the installation, please call SDHQ Offroad @ 480-633-2929
Mon.–Fri. 8:00am–5:30pm and Sat. 8:00am–3:30pm Arizona Time. www.sdhqoffroad.com**



SDHQ Motorsports
190 S McQueen Rd
Ste 109 Gilbert, AZ 85233
Phone: 480-633-2929

INSTALLATION INSTRUCTIONS

Product: SDHQ-13-1406-G13

Description: 2015+ Ford F-150/Raptor 1" Lowering Shackles



| Parts List | Hardware List | Required Tools |
|---|----------------------|--|
| (2) SDHQ F-150/Raptor Shackles SDHQ-13-1406-G13 | N/A | 21mm, 24mm socket and ratchet 21mm, 24mm wrench Jack and Jack Stands |
| Tech Notes | | |
| Bushings and Inner Sleeves are included. Reuses stock hardware. 1 inch lowering shackles. Use Medium Strength Loctite on all hardware. | | |

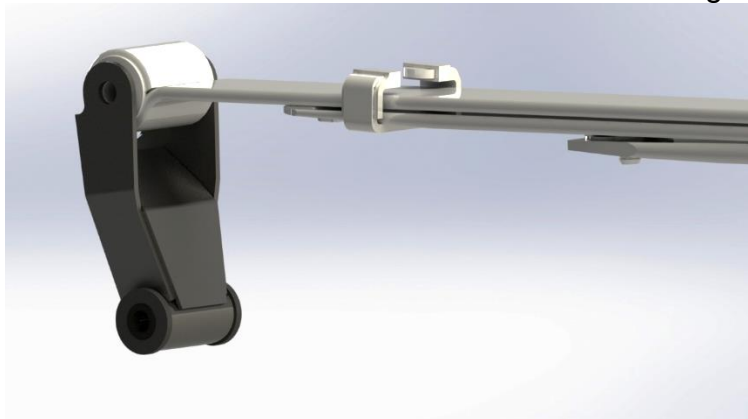
For questions or help with the installation, please call SDHQ Offroad @ 480-633-2929
Mon.-Fri. 8:00am-5:30pm and Sat. 8:00am-3:30pm Arizona Time. www.sdhqoffroad.com



*****READ ALL INSTRUCTIONS THOROUGHLY FROM START TO FINISH BEFORE BEGINNING INSTALLATION! *****

Installation Instructions:

1. Park the vehicle on flat, level ground. Chock the front wheels. Jack up the rear of the truck.
2. Support the axle on jack stands. Jack up the truck using the hitch.
3. Remove the lower shackle bolt using the 21mm socket and 24mm wrench. Remove the nut on the upper shackle bolt.
4. Lower the frame using the jack on the hitch. The frame will need to be low enough such that the upper shackle bolt can be removed.
5. Install the new SDHQ Shackles while the frame is lowered as shown below. Install the upper shackle bolt to the leaf springs with the factory hardware. Raise the frame and align the lower shackle hole to the frame. Install the rest of the factory hardware. Use Medium Loctite on all hardware. Torque all hardware to 136 lb-ft while the truck is on the ground.



For questions or help with the installation, please call SDHQ Offroad @ 480-633-2929
Mon.–Fri. 8:00am–5:30pm and Sat. 8:00am–3:30pm Arizona Time. www.sdhqoffroad.com

*****Double check all hardware is installed correctly and tight*****

*****Re-torque ALL bolts after 100 miles*****



190 S McQueen Rd
Ste 109 Gilbert, AZ 85233
Phone: 480-633-2929 | Fax: 480-633-1791
www.sdhqoffroad.com

Follow us on:



Facebook



Instagram

For questions or help with the installation, please call SDHQ Offroad @ 480-633-2929
Mon.–Fri. 8:00am–5:30pm and Sat. 8:00am–3:30pm Arizona Time. www.sdhqoffroad.com