



SDHQ Offroad Racing
1720 W Elliot Rd
Gilbert, AZ 85233

Phone: 480-633-2929 | Fax: 480-633-1791

Product Packing List

Product: *SDHQ-13-1404-G12*

Description: 2009-2014 Ford SVT Raptor Frame Reinforcement Kit

_____ (1) Bracket A	SDHQ-13-1404-G12-A
_____ (1) Driver Side	
_____ (1) Passenger Side	
_____ (2) Bracket B	SDHQ-13-1404-G12-B
_____ (2) Bracket C	SDHQ-13-1404-G12-C
_____ (1) Hardware Package	SDHQ-13-1404-G12-D
_____ (2) 3/8" x 1" Grade 8 Bolts	
_____ (2) 3/8" Grade 8 Washers	
_____ (4) 1/2" x 1" Grade 8 Bolts	
_____ (4) 1/2" Grade 8 Washers	

Inspected, Packaged and Shipped By: _____ **Date:** _____

For questions or help with the installation, please call SDHQ Offroad @ 480-633-2929
Mon.-Fri. 8:00am-5:30pm and Sat. 8:00am-3:30pm Arizona Time. www.sdhqoffroad.com



SDHQ Offroad Racing
 1720 W Elliot Rd
 Gilbert, AZ 85233

Phone: 480-633-2929 | Fax: 480-633-1791

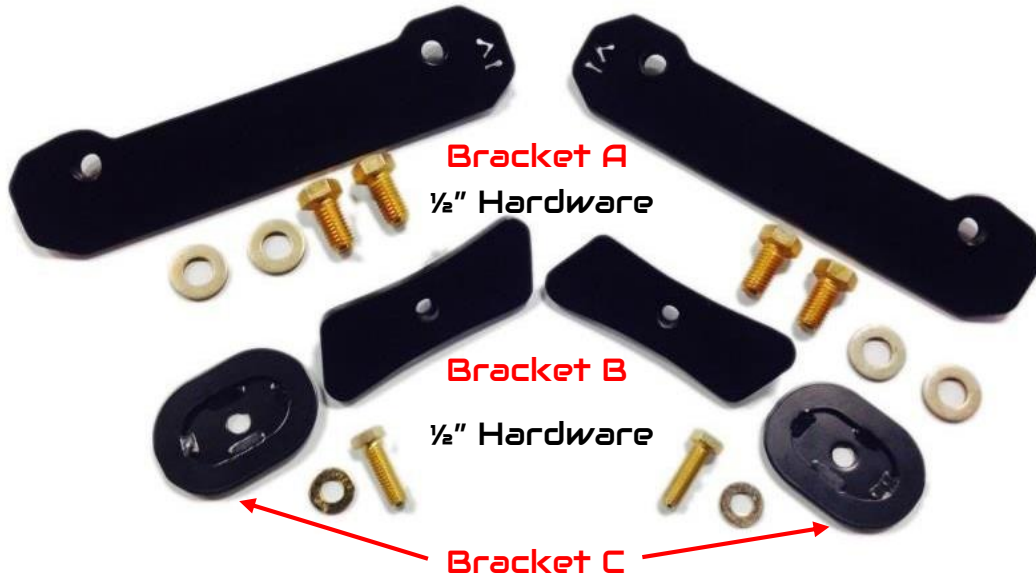
INSTALLATION INSTRUCTIONS

Product: *SDHQ-13-1404-G12*

Description: 2009-2014 Ford SVT Raptor Frame Reinforcement Kit

Passenger Side

Driver Side



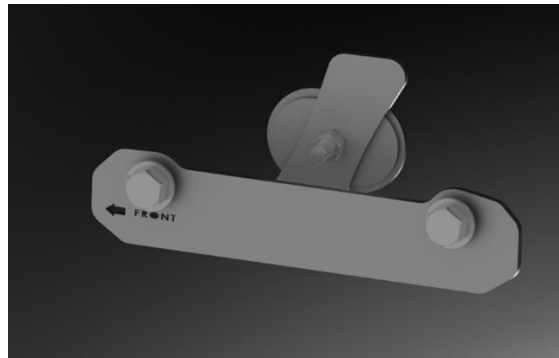
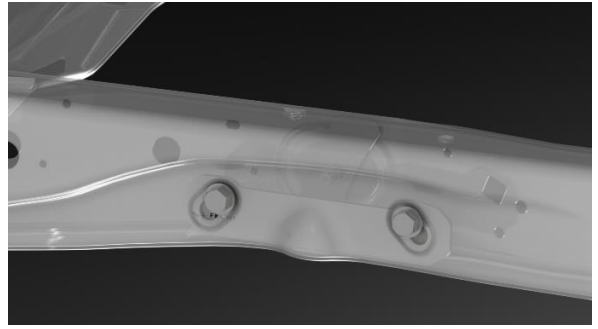
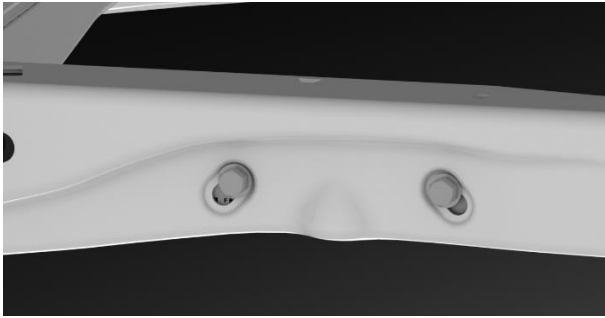
<u>Parts List</u>	<u>Hardware List</u>	<u>Required Tools</u>
(2) Bracket A SDHQ-13-1404-G12 (2) Bracket B SDHQ-13-1404-G12 (2) Bracket C SDHQ-13-1404-G12	(2) 3/8" x 1" Grade 8 Bolts (2) 3/8" Grade 8 Washers (4) 1/2" x 1" Grade 8 Bolts (4) 1/2" Grade 8 Washers	9/16" wrench or socket 3/4" wrench or socket

Tech Notes

"A" brackets are not symmetrical and are labeled for driver's side and passenger's side.
 Brackets "B" and "C" are symmetrical and it does not matter which side they are installed on.

Approx install time = 30min

For questions or help with the installation, please call SDHQ Offroad @ 480-633-2929
 Mon.-Fri. 8:00am-5:30pm and Sat. 8:00am-3:30pm Arizona Time. www.sdhqoffroad.com



*****READ ALL INSTRUCTIONS THOROUGHLY FROM START TO FINISH BEFORE BEGINNING INSTALLATION! *****

Installation Instructions:

1. Locate oval shaped hole directly above the stock rear bump stop. With Bracket A, line up the arrow towards the front of the truck, and smooth side towards the tire. Feed the bracket through the oval slot, tipping and rotating up and over the factory bump stop stud.



For questions or help with the installation, please call SDHQ Offroad @ 480-633-2929
Mon.–Fri. 8:00am–5:30pm and Sat. 8:00am–3:30pm Arizona Time. www.sdhqoffroad.com

2. Align holes in bracket with the outside frame rail oval ports. The bolt holes should be towards the upper portion of the oval frame ports, and the SDHQ bracket should sit flush against the bottom of the Ford frame rail. Install (2) 1/2" x 13 grade 8 bolts with a drop of thread locker and torque to 100 ft lbs.



3. Take the supplied 3/8" bolt with a drop of thread locker and washer, install it through the oval bracket and thread 2–3 turns into Bracket B. Feed both ends of the nut plate into the frame rail and tighten, then torque bolt to 35 ft lbs.



4. Repeat for opposite side.

*****Double check all hardware is installed correctly and tight*****

*****Re-torque ALL bolts after 100 miles*****



1720 W Elliot Rd. Gilbert, AZ 85233
Phone: 480-633-2929 | Fax: 480-633-1791
www.sdhqoffroad.com

Follow us on:



Facebook



Instagram

For questions or help with the installation, please call SDHQ Offroad @ 480-633-2929
Mon.-Fri. 8:00am-5:30pm and Sat. 8:00am-3:30pm Arizona Time. www.sdhqoffroad.com