



SDHQ Motorsports
190 S McQueen Rd
Ste 109 Gilbert, AZ 85233
www.SDHQoffroad.com

Product Packing List

Product: SDHQ-13-1206-G12-REV2

Description: 2009-14 Ford F-150/Raptor A Pillar Light Mounts

| | |
|--|-------------------------|
| _____ (1) Driver Side Mount | SDHQ-13-1206-G12-A-REV2 |
| _____ (1) Passenger Side Mount | SDHQ-13-1206-G12-B-REV2 |
| _____ (1) Hardware Package | SDHQ-13-1206-G12-HP |
| _____ (4) M8 - 1.25 x 25mm Flange Head Bolts | |

Inspected and Packaged By: _____ Date: _____

For questions or help with the installation, please email help@sdhqoffroad.com
Store front hours: Mon. – Fri. 8:00am – 5:30pm and Sat. 9:00am – 2:00pm Arizona Time.



SDHQ Motorsports
 190 S McQueen Rd
 Ste 109 Gilbert, AZ 85233
www.SDHQoffroad.com

INSTALLATION INSTRUCTIONS

Product: SDHQ-13-1206-G12-REV2

Description: 2009-14 Ford F-150/Raptor A Pillar Light Mounts



| <u>Parts List</u> | <u>Hardware List</u> | <u>Required Tools</u> |
|--|---------------------------------------|--|
| (1) Driver Side Mount SDHQ-13-1206-G12-A (1) Passenger Side Mount SDHQ-13-1206-G12-B (1) Hardware Package SDHQ-13-1206-G12-HP | (4) M8 – 1.25 x 25mm Flange Head Bolt | 10mm, 13mm Ratchet Wrench Small Flathead Screwdriver Razor or other plastic cutting tools Hood Prop Marker |

Tech Notes

Trimming of cowl required for install.

A hood prop or second person will be needed to support the hood during installation.

Trace the outline of hood hinges before removal to assist in realignment.

****Approx install time = 1 1/2 hour (not including wiring)****

*****READ ALL INSTRUCTIONS THOROUGHLY FROM START TO FINISH BEFORE BEGINNING INSTALLATION!*****

For questions or help with the installation, please email help@sdhqoffroad.com
 Store front hours: Mon. – Fri. 8:00am – 5:30pm and Sat. 9:00am – 2:00pm Arizona Time.



Installation Instructions:

1. Raise and prop hood and locate the hood hinge bolts near the base of the windshield. With a 10mm wrench (ratchet wrench preferred), remove both hinge bolts on one side of the truck. Remove the gas strut that lifts to hood to help with installation. Be sure to use a hood prop to brace the hood. Use a small flathead screwdriver to pop the lower retaining clip enabling the lower end of the strut to be removed of the ball stud. **** Mark the outline of your hood hinge with a marker before removal to assist with realignment during installation. ****



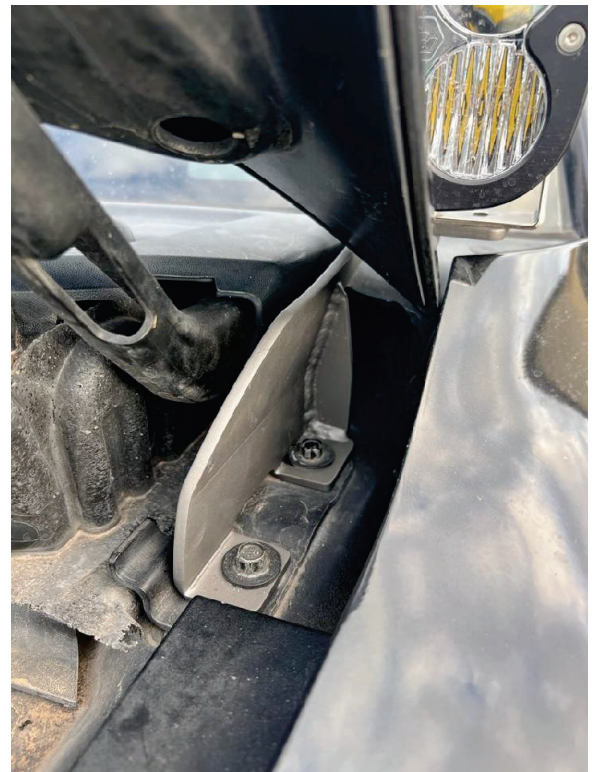
For questions or help with the installation, please email help@sdhqoffroad.com
Store front hours: Mon. – Fri. 8:00am – 5:30pm and Sat. 9:00am – 2:00pm Arizona Time.

- Using a razor or other plastic cutting tool, trim and remove the (pocket) lowest part of the cowl, shown below. Remove as minimal material as possible by test fitting the A-Pillar frequently.



- Feed the A-Pillar bracket into the cavity above the hood hinge. The hood may need to be lifted slightly to fit the bracket in place. The vertical of the A-Pillar bracket sits next to the vertical of the hood hinge for reference. Align the hood hinge with the marked outline and install with the supplied M8 bolts and replace the hood strut.

- Repeat Steps 1 - 3 for the other side. Enjoy your new SDHQ Built A-Pillar Light Mounts!



Double check all hardware is installed correctly and tight

Re-torque ALL bolts after 100 miles



190 S McQueen Rd
Ste 109 Gilbert, AZ 85233
www.sdhqoffroad.com

Follow us on:



Facebook



Instagram

For questions or help with the installation, please email help@sdhqoffroad.com
Store front hours: Mon. – Fri. 8:00am – 5:30pm and Sat. 9:00am – 2:00pm Arizona Time.