



SDHQ Motorsports
190 S McQueen Rd
Ste 109 Gilbert, AZ 85233
Phone: 480-633-2929

Product Packing List

Product: SDHQ-13-1130-G12

Description: **2010-2014 Ford Raptor Switch Pros**
Keypad Mounting

_____ (1) SDHQ Laser Cut 9100 Face Plate	SDHQ-13-1130-G12-A
_____ (1) SDHQ Laser Cut Backer Reinforcement	SDHQ-13-1130-G12-B
_____ (1) SDHQ 3D Printed RCR-Force-12 Mount	SDHQ-13-1131-G12

Inspected and Packaged By: _____ **Date:** _____

For questions or help with the installation, please call SDHQ Offroad @ 480-633-2929
Mon.-Fri. 8:00am-5:30pm and Sat. 8:00am-3:30pm Arizona Time. www.sdhqoffroad.com



SDHQ Motorsports
 190 S McQueen Rd
 Ste 109 Gilbert, AZ 85233
 Phone: 480-633-2929

INSTALLATION INSTRUCTIONS

Product: *SDHQ-13-1130-G12*

Description: 2010-2014 Ford Raptor Switch Pros Keypad Mounting



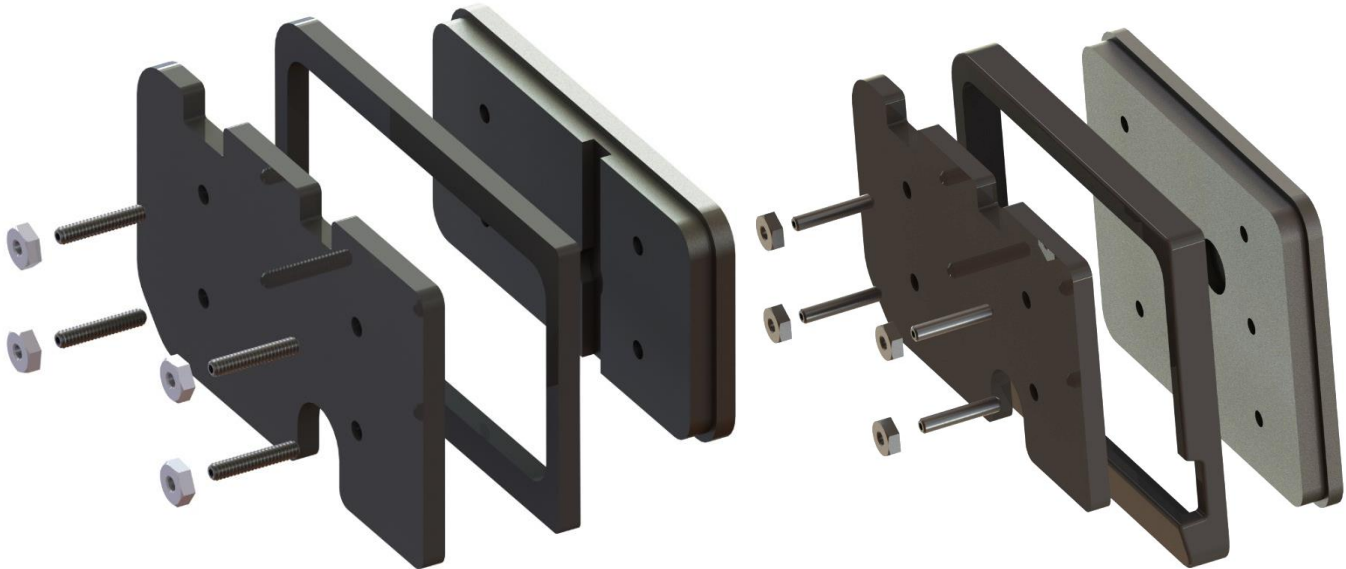
<u>Parts List</u>	<u>Hardware List</u>	<u>Required Tools</u>
(1) SDHQ Laser Cut 9100 Face Plate SDHQ-13-1130-G12-A (1) SDHQ Laser Cut Backer Reinforcement SDHQ-13-1130-G12-B (1) SDHQ 3D Printed RCR-Force-12 Mount SDHQ-13-1131-G12	N/A	8mm Socket Plastic Panel Remover Small Screw Driver

Tech Notes

Switch Pros Keypad utilizes Switch Pros hardware to mount.
 Approx. Install Time: 1 Hour (not including wiring)

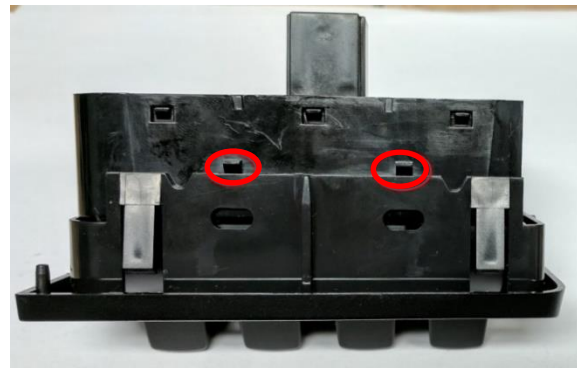
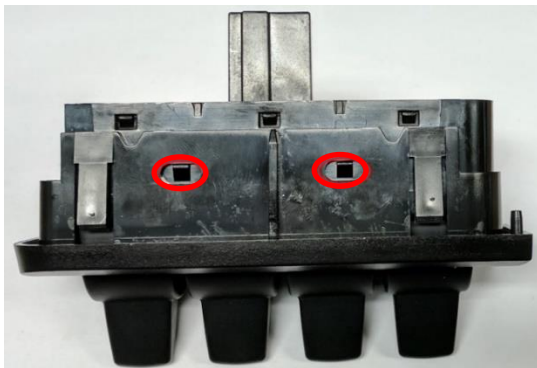
*****READ ALL INSTRUCTIONS THOROUGHLY FROM START TO FINISH BEFORE BEGINNING INSTALLATION!*****

For questions or help with the installation, please call SDHQ Offroad @ 480-633-2929
 Mon.-Fri. 8:00am-5:30pm and Sat. 8:00am-3:30pm Arizona Time. www.sdhqoffroad.com

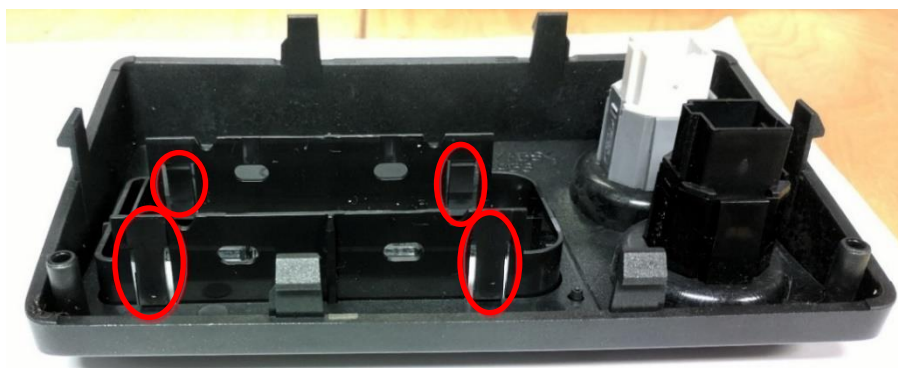


Installation Instructions:

1. Unbox all parts and familiarize yourself with them.
2. Locate the factory upfitter on the center console. Using panel removal tools, remove the panel by prying outward. There are (6) clips total connecting the panel to the truck. (2) clips are on the top and bottom and (1) on each side. Unplug the (3) electrical plugs.
3. Once the panel is out, the switches can be removed. Using a small screwdriver, unclip all (4) clips holding the switches to the panel. The switches can then be pulled out once unclipped.



4. The last piece that needs to be removed is the cover for the switches. This can be removed by pushing in the (4) clips connecting the cover to the panel.



- 5. Switch Pros 9100 Keypad Install.** With the cover and switches removed, the Switch Pros 9100 Keypad can be installed. Place the SDHQ 9100 Face Plate over the opening on the face of the factory panel. Thread the Switch Pros hardware into the Keypad and insert the Keypad into the Face Plate in the factory panel.
- 6.** On the back side of the panel, align the Backer Reinforcement with the Switch Pros Keypad hardware. Tighten the nylock nuts until Backer and Keypad are snug. Proceed to Step 9.



- 7. Switch Pros RCR-Force-12 Install.** Place the 3D Printed Mount over the opening on the face of the factory panel. Thread the Switch Pros threaded rod into the back of the Keypad. Place the Keypad into the 3D Printed Mount.
- 8.** On the back side of the panel, align the Backer Reinforcement with the Switch Pros Keypad hardware. Tighten the nylock nuts until Backer and Keypad are snug.
- 9.** Finish wiring your vehicle for the Switch Pros. Reinstall the factory panel into the center console after the wiring is ran. Enjoy your SDHQ Ford Raptor Switch Pros Keypad Mount!



*****Double check all hardware is installed correctly and tight*****

*****Re-torque ALL bolts after 100 miles*****



190 S McQueen Rd
Ste 109 Gilbert, AZ 85233
Phone: 480-633-2929 | Fax: 480-633-1791
www.sdhqoffroad.com

Follow us on:



Facebook



Instagram

For questions or help with the installation, please call SDHQ Offroad @ 480-633-2929
Mon.–Fri. 8:00am–5:30pm and Sat. 8:00am–3:30pm Arizona Time. www.sdhqoffroad.com