



SDHQ Motorsports
190 S McQueen Rd
Ste 109 Gilbert, AZ 85233
www.SDHQoffroad.com

Product Packing List

Product: SDHQ-11-3003-G4-20

Description: 2020+ Ford Super Duty Billet Dual Battery Terminal Kit

- | | |
|---|--------------------|
| _____ (1) SDHQ Complete HD Battery Terminal Kit | SDHQ-02-3003-C1 |
| _____ (1) SDHQ Complete Billet Battery Terminal Kit | SDHQ-02-3003-C2 |
| _____ (4) SDHQ 1-2GA Lug & Heat Shrink | |
| ○ Compression Lugs | SDHQ-02-3802 |
| <u>OR</u> | |
| ○ Solder Lugs | SDHQ-02-3701 |
| _____ (1) SDHQ 16" Negative 6GA Battery to Body | SDHQ-02-3002-U1-E |
| _____ (1) Hardware Package | SDHQ-11-3003-G4-HP |
| _____ (4) Small Zip ties | |
| _____ (1) Straight Aluminum Bracket | |
| _____ (1) 2GA - 2/0 Red Battery Boot | |
| _____ (1) 3/8" - 16 x 3/4" S.S. Button Head Bolt | |
| _____ (1) 3/8" - 16 S.S. Serrated Flange Nut | |

Inspected and Packaged By: _____ Date: _____

For questions or help with the installation, please email help@sdhqoffroad.com
Mon.-Fri. 8:00am-5:30pm and Sat. 8:00am-3:30pm Arizona Time. www.sdhqoffroad.com

Included in SDHQ-02-3003-C1:

- (1) SDHQ Billet Positive Battery Terminal
- (1) SDHQ Billet Negative Battery Terminal
- (1) Hardware Package
 - (1) Positive Terminal Insulator
 - (1) Negative Terminal Insulator
 - (1) Positive Terminal Post Washer
 - (1) Negative Terminal Post Washer
 - (2) 5/16" - 18 x 1 1/2" Battery Terminal Bolt
 - (2) 5/16" - 18 Battery Shoulder Nut
 - (2) 3/8" - 16 x 2" S.S. Hex Head Bolt
 - (4) 3/8" S.S. Washers
 - (2) 3/8" - 16 S.S. Nuts

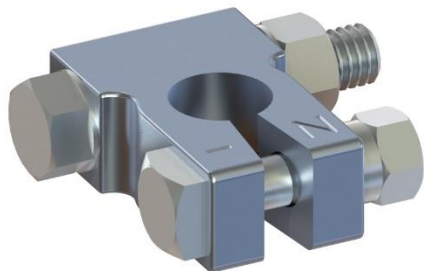
SDHQ-02-3003-T1-P-Rev2
SDHQ-02-3003-T1-N-Rev2
SDHQ-02-3003-T1-A

Included in SDHQ-02-3003-C2:

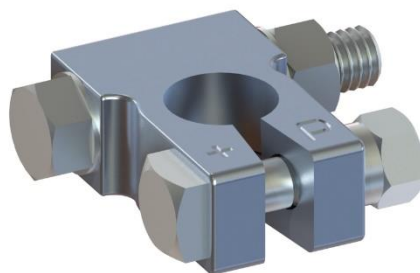
- (1) SDHQ Billet Positive Battery Terminal
- (1) SDHQ Billet Negative Battery Terminal
- (1) SDHQ Negative Terminal Stud
- (1) Hardware Package
 - (1) Positive Battery Protective Boot
 - (1) Negative Battery Protective Boot
 - (1) Positive Terminal Post Washer
 - (1) Negative Terminal Post Washer
 - (2) 5/16" - 18 x 1 1/2" Battery Terminal Bolt
 - (2) 5/16" - 18 Battery Shoulder Nut
 - (6) 1/4" - 20 x 3/4" S.S. Hex Head Bolt
 - (6) 1/4" S.S. Washer
 - (2) 5/16" - 18 x 1" S.S. Hex Head Bolt
 - (2) 5/16" S.S. Washer
 - (2) 3/8" - 16 x 2" S.S. Hex Head Bolt
 - (4) 3/8" S.S. Washers
 - (2) 3/8" - 16 S.S. Nuts
 - (1) Small Tube of Anti-Seize

SDHQ-02-3003-T2-P-Rev2
SDHQ-02-3003-T2-N-Rev2
SDHQ-02-3003-T2-A
SDHQ-02-3003-T2-B

SDHQ Negative HD Terminal



SDHQ Positive HD Terminal



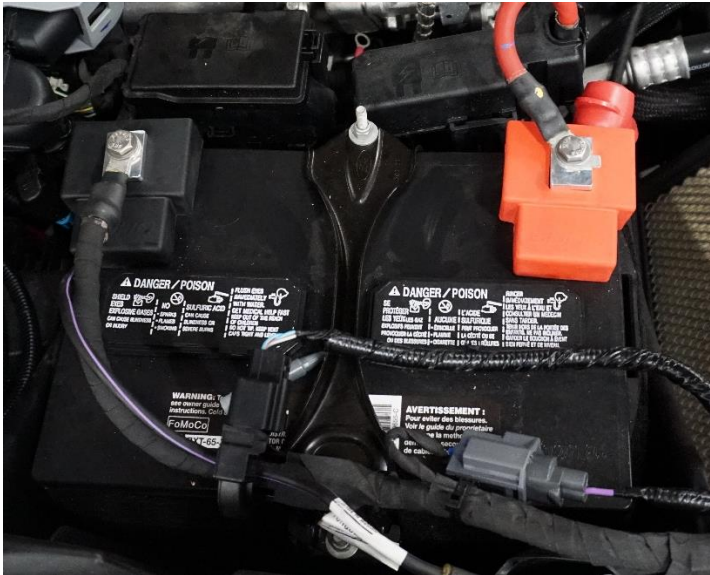


SDHQ Motorsports
 190 S McQueen Rd
 Ste 109 Gilbert, AZ 85233
www.SDHQoffroad.com

INSTALLATION INSTRUCTIONS

Product: SDHQ-11-3003-G4-20

Description: 2020+ Ford Super Duty Billet Dual Battery Terminal Kit



<u>Parts List</u>	<u>Hardware List</u>	<u>Required Tools</u>
<ul style="list-style-type: none"> (1) SDHQ Complete HD Terminal Kit SDHQ-02-3003-C1 (1) SDHQ Complete Battery Terminal Kit SDHQ-02-3003-C2 (4) SDHQ 1-2GA Lugs & Heat Shrink SDHQ-02-3802 OR SDHQ-02-3701 (1) 16" Negative 6GA Battery to Body Wire SDHQ-02-3002-U1-E (1) Hardware Package SDHQ-11-3003-G4-HP 	<ul style="list-style-type: none"> (4) Small Zip ties (1) Aluminum Bracket (1) 2GA – 2/0 Red Battery Boot (1) 3/8" – 16 x 3/4" S.S. Button Head Bolt (1) 3/8" – 16 S.S. Serrated Flange Nut 	<ul style="list-style-type: none"> 7/16", 1/2", 9/16" Sockets 7mm, 10mm, 12mm Sockets Ratchet 7/16", 1/2", 9/16" Wrench Pliers Wire Cutters Heat Gun Rubber Mallet

Tech Notes

Apply Anti-Seize to all hardware.
 Fits 2020+ Ford F-250/350 with factory dual batteries.
 Cutting the factory terminals off is required.

Torque Specifications

Torque the 1/4" – 20 bolts to 4 ft-lb. Torque the 5/16" – 18 bolts to 8 ft-lb. Torque the 3/8" – 16 hardware to 18 ft-lb.

Be cautious when tightening the Compression Lugs as the threads can strip.

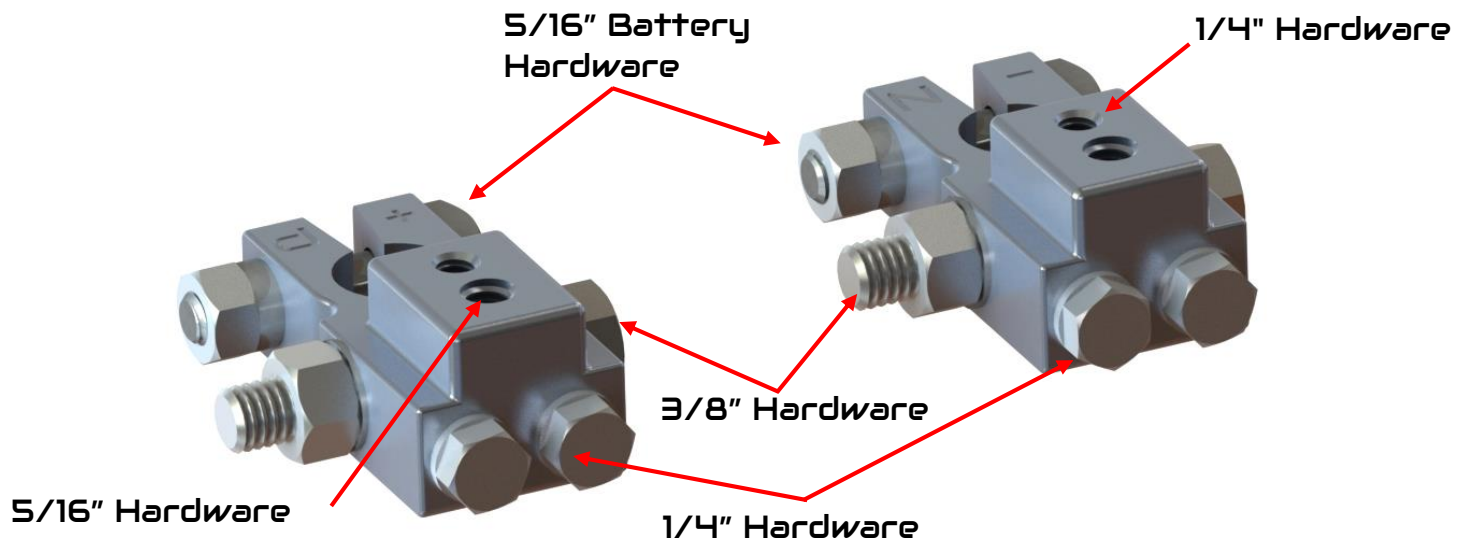
Follow the Torque Specifications on the bottom of Page 5.

Approx. Install Time: 1+ Hour

For questions or help with the installation, please email help@sdhqoffroad.com
 Mon.–Fri. 8:00am–5:30pm and Sat. 8:00am–3:30pm Arizona Time. www.sdhqoffroad.com

SDHQ Positive Accessory Terminal

SDHQ Negative Accessory Terminal



READ ALL INSTRUCTIONS THOROUGHLY FROM START TO FINISH BEFORE BEGINNING INSTALLATION!

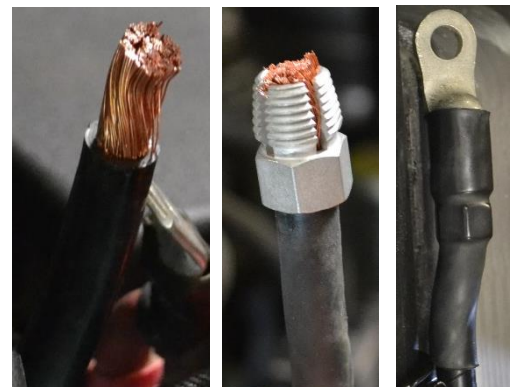
Installation Instructions:

1. Unbox and verify all parts are present. Familiarize yourself with the parts and diagram above.
2. Disconnect the negative terminals on both batteries. Loosen the hose clamp connecting the intake tube to the engine. Disconnect the MAF harness and remove (4) clips holding the top of the intake on. Remove the intake. This will give you more space to work with when wiring.

3. **Removing the Terminals.** Starting on the passenger side battery, remove both terminals from the battery. Remove the remaining wires connected to the terminals; set the negative terminal to the side and remove the positive terminals as shown to right.



4. **Installing Lugs.** Strip 1" of insulation off the positive wire and slide the heat shrink and red battery boot onto the positive wire. **Compression Lugs:** Slide compression end of the 1-2GA lug over the stripped positive wire. Using the 9/16" wrench and pliers, tighten the compression lug until it is snug. Be mindful of the orientation of the lugs for ease of wiring to the terminals. Be cautious not to over tighten as the threads can strip. **Solder Lugs:** Using pliers to hold the solder lug, practice holding the lug upright and placing the wire in cold solder. Once comfortable, heat the solder lug upright until liquid and hold wire in the solder lug until cool. Heat the 3" of heat shrink over the lug and wire.



5. Repeat Step 4 for the negative wire, removing the black/purple small battery to fender ground wire. This will be replaced with the supplied 16" Negative 6GA Battery to Body Wire.
6. Repeat Steps 3 – 5 for the driver side battery. Adding a compression lug to the negative wire as well.

For questions or help with the installation, please email help@sdhqoffroad.com
Mon.–Fri. 8:00am–5:30pm and Sat. 8:00am–3:30pm Arizona Time. www.sdhqoffroad.com

- 7. Installing Battery Terminals.** Install the SDHQ HD Battery Terminals (02-3003-C1) and post washers onto the driver side battery. Install the SDHQ Built Complete Billet Battery Terminals (02-3003-C2) and post washers onto the passenger side battery. Lightly tap on the top of the terminals using a rubber mallet to set it on the battery post. Tighten the 5/16" Battery Bolt and Nut, using 1/2" wrench on both to prevent damaging the battery post.
- 8.** Connect all negative wires to the negative terminal on the passenger side battery. Use the supplied aluminum bracket on the positive terminal 3/8" bolt to extend the mounting location for the power wire previously trimmed. Use the supplied 3/8" button head bolt and flange nut to secure the positive lug to the aluminum bracket. Connect all positive wires to the positive terminal on the passenger side battery. If you have dual alternators, the alternator wires can be flattened to simplify wiring.



- 9.** On the driver side battery, slide the terminal insulators over the corresponding wires. Connect the power and ground wires to their corresponding terminals. Secure the negative wires on both batteries to the battery hold down using supplied small zip ties.



- 10.** Install the intake in the reverse order of Step 2. You have completed the SDHQ Ford Super Duty Battery Terminal Upgrade!

Double check all hardware is installed correctly and tight

Re-torque ALL bolts after 100 miles



190 S McQueen Rd
Ste 109 Gilbert, AZ 85233
Phone: 480-633-2929 | Fax: 480-633-1791
www.sdhqoffroad.com

Follow us on:



Facebook



Instagram

For questions or help with the installation, please email help@sdhqoffroad.com
Mon.–Fri. 8:00am–5:30pm and Sat. 8:00am–3:30pm Arizona Time. www.sdhqoffroad.com