



SDHQ Motorsports
190 S McQueen Rd
Ste 109 Gilbert, AZ 85233
Phone: 480-633-2929

Product Packing List

Product: SDHQ-11-1801-G4

Description: 2017+ Ford Super Duty Built in Bed Chase Rack

_____ (1) Front Plate	SDHQ-11-1801-G4-A
_____ (1) Floor Plate	SDHQ-11-1801-G4-B
_____ (1) Driver Side Plate	SDHQ-11-1801-G4-C
_____ (1) Passenger Side Plate	SDHQ-11-1801-G4-D
_____ (1) Driver Support Tube	SDHQ-11-1801-G4-E
_____ (1) Passenger Support Tube	SDHQ-11-1801-G4-F
_____ (1) SDHQ Tie Down	SDHQ-00-1810-U1
_____ (1) Hardware Package	SDHQ-00-1801-HP
_____ (8) 3/8" - 16 x 3/4" Grade 8 Hex Bolt	
_____ (8) 3/8" - 16 Grade 8 Lock Nut	
_____ (16) 3/8" Grade 8 Washers	
_____ (18) 5/16" - 18 x 3/4" Grade 8 Hex Bolt	
_____ (18) 5/16" - 18 Grade 8 Lock Nut	
_____ (36) 5/16" Grade 8 Washers	
_____ (4) 7/16 - 14 x 1" Grade 8 Hex Head Bolts	
_____ (4) 7/16" Grade 8 Washers	
_____ (2) 2" Plastic Round Tube Plugs	

Inspected and Packaged By: _____ Date: _____

For questions or help with the installation, please call SDHQ Offroad @ 480-633-2929
Mon.-Fri. 8:00am-5:30pm and Sat. 8:00am-3:30pm Arizona Time. www.sdhqoffroad.com

Included in SDHQ-00-1810-U1:

(2) Tie Downs

(1) Hardware Package

(4) 5/16" - 18 x 3/4" Grade 8 Hex Bolt

(8) 5/16" Grade 8 Washer

(4) 5/16" - 18 Grade 8 Lock Nut

SDHQ-00-1810-U1-A

SDHQ-00-1810-U1-B



SDHQ Motorsports
 190 S McQueen Rd
 Ste 109 Gilbert, AZ 85233
 Phone: 480-633-2929

INSTALLATION INSTRUCTIONS

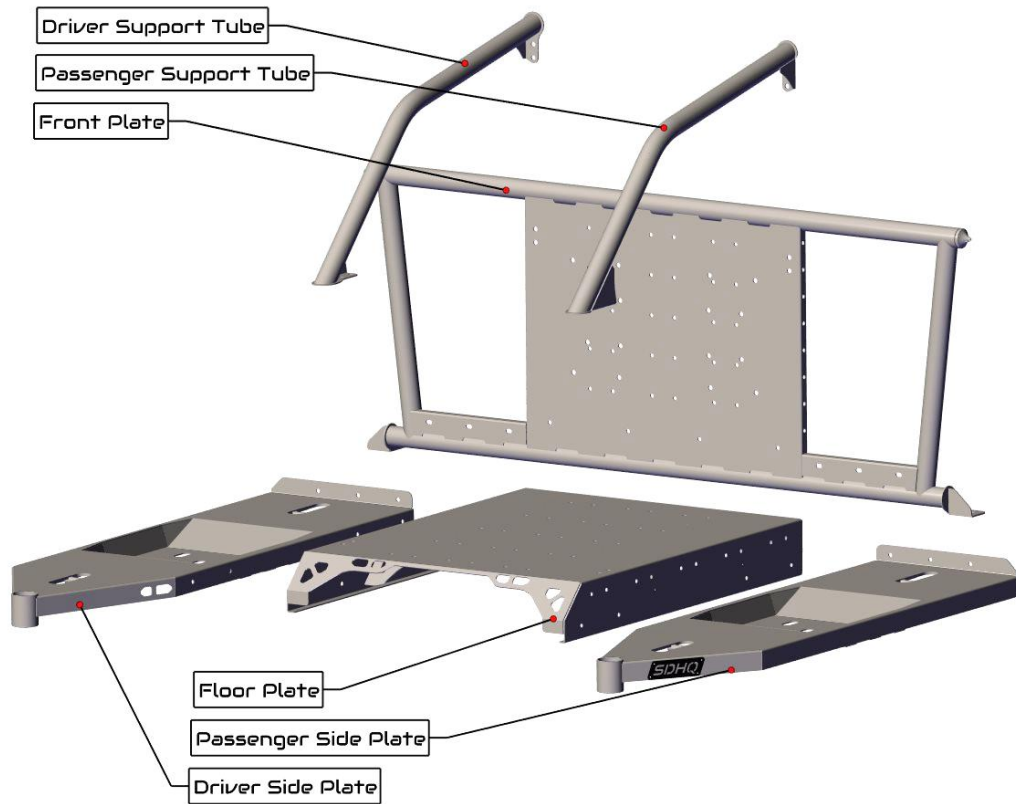
Product: SDHQ-11-1801-G4

Description: 2017+ Ford Super Duty Built in Bed Chase Rack



Parts List	Hardware List	Required Tools
(1) Front Plate SDHQ-11-1801-G4-A (1) Floor Plate SDHQ-11-1801-G4-B (1) Driver Side Plate SDHQ-11-1801-G4-C (1) Passenger Side Plate SDHQ-11-1801-G4-D (1) Driver Support Tube SDHQ-11-1801-G4-E (1) Passenger Support Tube SDHQ-11-1801-G4-F (1) SDHQ Tie Downs SDHQ-00-1810-U1 (1) Hardware Package SDHQ-00-1801-HP	(8) 3/8" - 16 x 3/4" Grade 8 Hex Head Bolt (8) 3/8" - 16 Grade 8 Lock Nut (16) 3/8" Grade 8 Washer (18) 5/16" - 18 x 3/4" Grade 8 Hex Head Bolt (18) 5/16" - 18 Grade 8 Lock Nut (36) 5/16" Grade 8 Washer (4) 7/16" - 14 x 1" Grade 8 Hex Head Bolt (4) 7/16" Grade 8 Washer (2) 2" Plastic Round Tube Plug	1/2" and 9/16" Sockets Ratchet 1/2" and 9/16" Wrenches Torx Plus EP-24 Bit
Tech Notes		
Supplied (4) 7/16" hardware sets will not be used. Approx. Install Time: 3-4 Hours		

For questions or help with the installation, please call SDHQ Offroad @ 480-633-2929
 Mon.-Fri. 8:00am-5:30pm and Sat. 8:00am-3:30pm Arizona Time. www.sdhqoffroad.com



*****READ ALL INSTRUCTIONS THOROUGHLY FROM START TO FINISH BEFORE BEGINNING INSTALLATION!*****

Installation Instructions:

1. Un-box your SDHQ Ford F150/Raptor Bed Rack and lay the parts out on a clean surface. Verify all components are present and familiarize yourself with them.
2. Place the Floor Plate on a level surface. Align the Front Plate in front of the Floor Plate. Insert (4) 5/16" – 18 x 3/4" Grade 8 Hex head bolts with 5/16" washers through the Floor Plate and Front Plate holes. Place 5/16" washers and thread (4) 5/16" – 18 Lock Nuts on the front of the Front Plate.

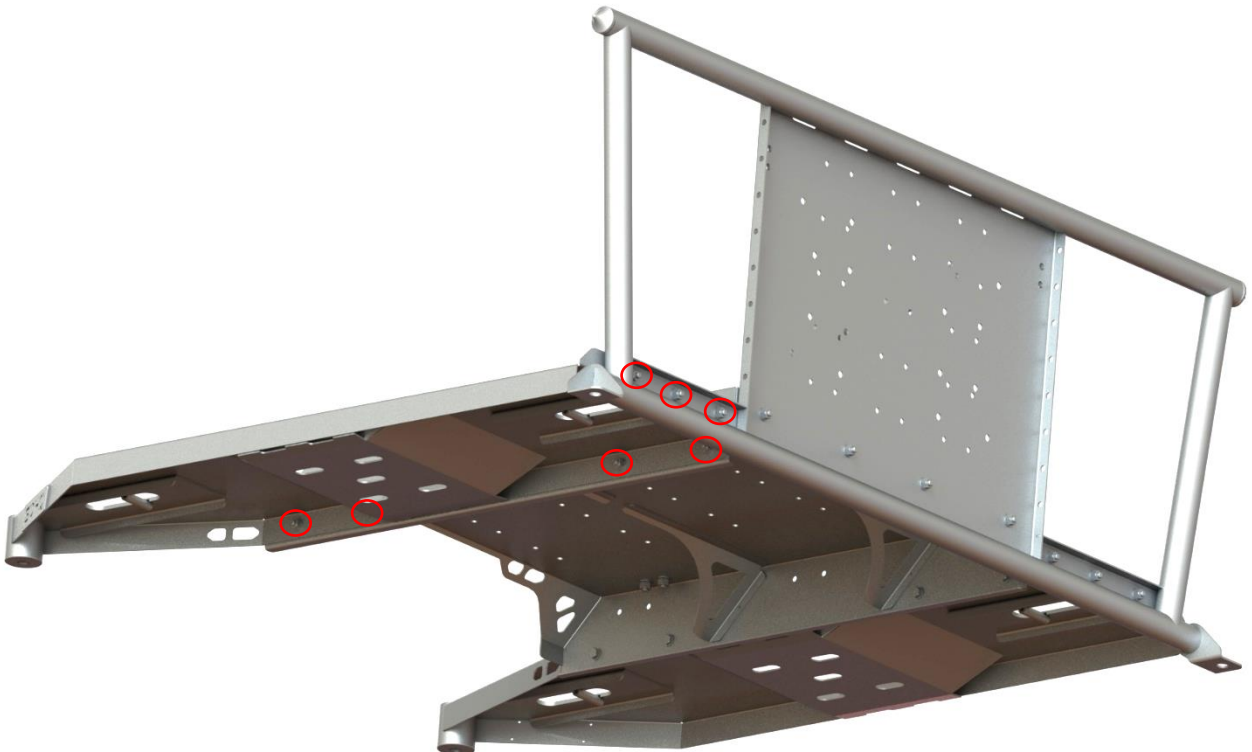


For questions or help with the installation, please call SDHQ Offroad @ 480-633-2929
 Mon.–Fri. 8:00am–5:30pm and Sat. 8:00am–3:30pm Arizona Time. www.sdhqoffroad.com

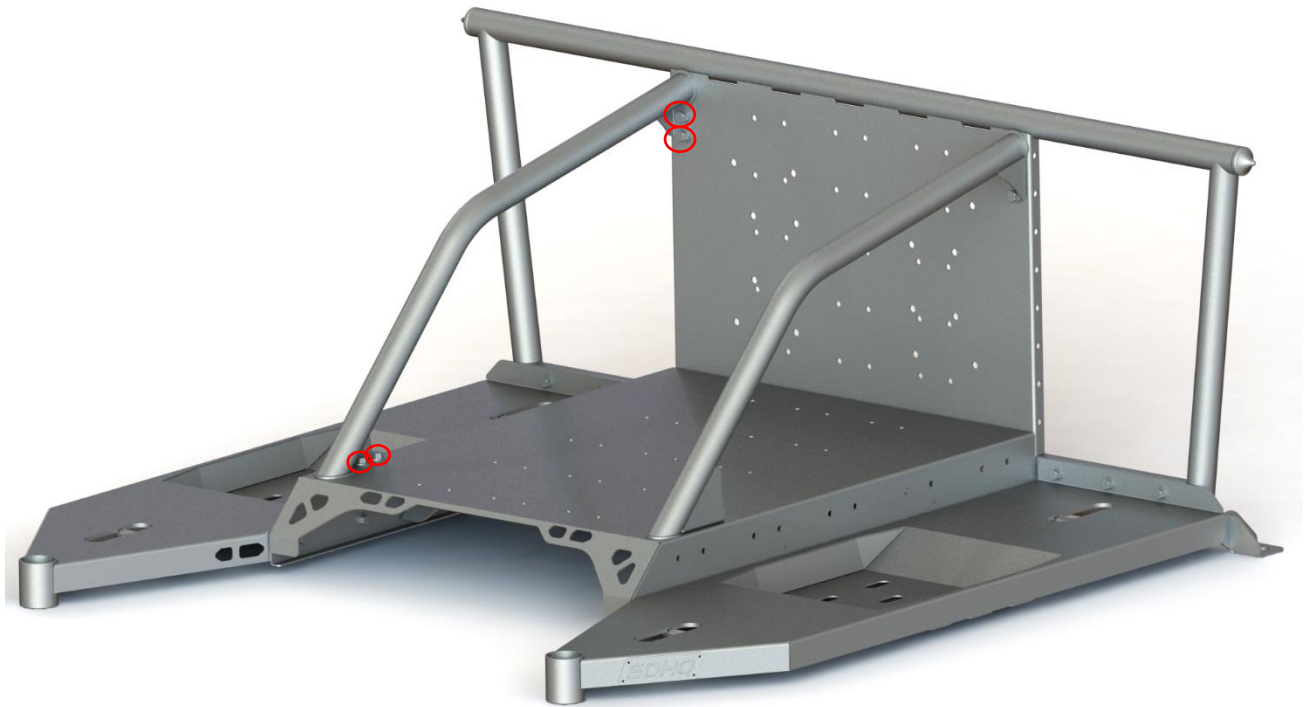
3. Align the Driver Side Plate next to the Front Plate and Floor Plate. There is a total of (7) 5/16" – 18 x 3/4" Grade 8 Hex head bolts that will be used on this side. (3) bolts will connect the Driver Side Plate and the Front Plate. The other (4) bolts will connect the Driver Side Plate and the Floor Plate. Be sure to use the 5/16" washers on both sides of the bolt.



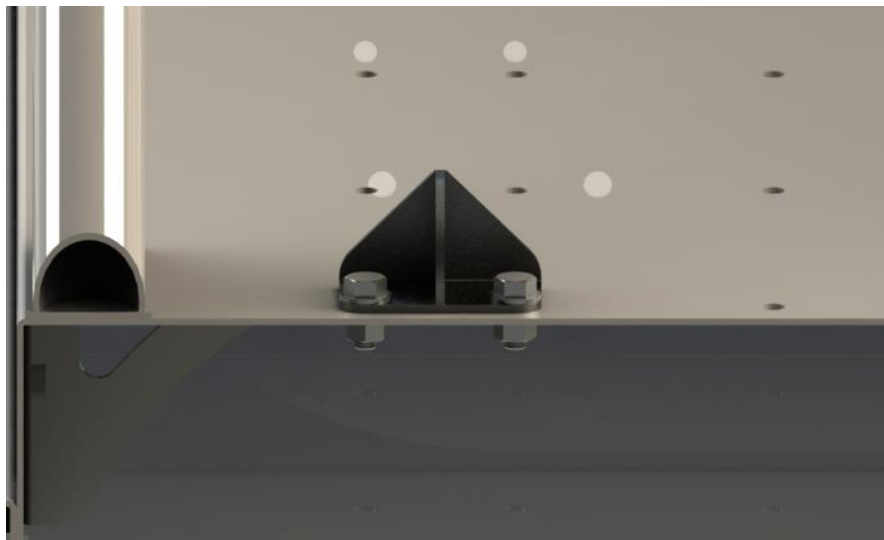
4. Repeat Step 3 for the Passenger Side Plate.



- Align the Driver Support Tube with the Floor Plate and Front Plate as pictured. Insert (4) 3/8" – 16 x 3/4" Grade 8 Hex head bolts with 3/8" washers through the Driver Support Tube on the Front Plate and Floor Plate. Place 3/8" washers and thread 3/8" – 16 Lock Nuts onto the 3/8" Hex head bolts. Repeat this for the Passenger Support Tube.



- Use (2) 5/16" – 18 x 3/4" Grade 8 Hex head bolts, (4) 5/16" washers and (2) 5/16 – 18 Lock Nuts for each tie down mount. Bolt the mounts as pictured below. The mounts can be placed where needed on the Bed rack.



- Tighten all bolts before installing into the bed of your Super Duty.

8. In the bed of your Super Duty, locate the front and middle-rear (4) bolts. If bed liner has been sprayed over the bolts, the bed liner will need to be removed first. To do so, use a razor to cut the bed liner around the bolt head. Use pliers or a chisel to remove the bed liner from the bolt head. Cut around the washer and remove the bed liner from the washer. Repeat on the other (3) bolts and washers.



9. Use a Torx Plus EP-24 bit to remove these bolts. Align the Bed Rack mounting holes over the bolt holes in the bed. Tighten the bed bolts by hand first using the EP-24 bit starting with the (2) bed bolts at the rear of the truck. Torque to 60 ft lbs. Install the (2) Plastic Round Tube Plugs into the mounting tubes.



10. Place any accessories such as spare tires and Scribner cans on the Bed Rack. Be sure to strap all accessories appropriately and enjoy your new SDHQ Bed Rack!

Double check all hardware is installed correctly and tight

Re-torque ALL bolts after 100 miles



190 S McQueen Rd
Ste 109 Gilbert, AZ 85233
Phone: 480-633-2929 | Fax: 480-633-1791
www.sdhqoffroad.com

Follow us on:



Facebook



Instagram

For questions or help with the installation, please call SDHQ Offroad @ 480-633-2929
Mon.–Fri. 8:00am–5:30pm and Sat. 8:00am–3:30pm Arizona Time. www.sdhqoffroad.com