



SDHQ Motorsports
190 S McQueen Rd
Ste 109 Gilbert, AZ 85233
Phone: 480-633-2929

Product Packing List

Product: *SDHQ-11-1206-G3*

Description: 2011-2016 Ford Super Duty A-Pillar Light Mount Kit

_____ (1) Driver Side Mount	SDHQ-11-1206-G3-A
_____ (1) Passenger Side Mount	SDHQ-11-1206-G3-B
_____ (1) Hardware Package	SDHQ-11-1206-G3-C
_____ (2) 5/16" - 18 x 1" Grade 8 Bolts	
_____ (2) 5/16" - 18 Grade 8 Lock Nuts	
_____ (4) 5/16" Grade 8 Washers	
_____ (2) SDHQ Clear Vinyl Protective Strips	

Inspected and Packaged By: _____ **Date:** _____

For questions or help with the installation, please call SDHQ Offroad @ 480-633-2929
Mon.-Fri. 8:00am-5:30pm and Sat. 8:00am-3:30pm Arizona Time. www.sdhqoffroad.com



SDHQ Motorsports
 190 S McQueen Rd
 Ste 109 Gilbert, AZ 85233
 Phone: 480-633-2929

INSTALLATION INSTRUCTIONS

Product: *SDHQ-11-1206-G3*

Description: 2011-2016 Ford Super Duty A-Pillar Light Mount Kit



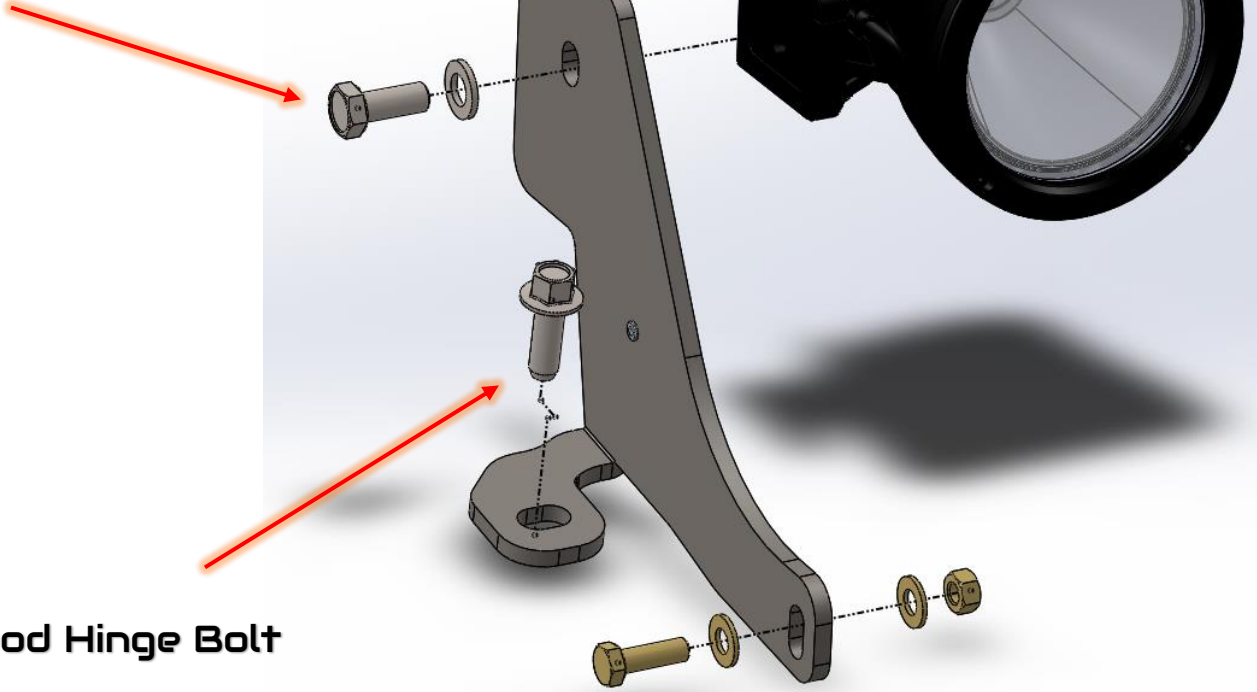
Parts List	Hardware List	Required Tools
(1) Driver Side Mount SDHQ-11-1206-G3-A (1) Passenger Side Mount SDHQ-11-1206-G3-B (1) Hardware Package SDHQ-11-1206-G3-C	(2) - 5/16"-18 x 1" Grade 8 Bolts (2) - 5/16"-18 Grade 8 Lock Nuts (4) - 5/16" Grade 8 Washers (2) - SDHQ Clear Vinyl Protective Strips (5.5"x1")	7mm Socket 13mm Socket 1/4" & 3/8" Drive Ratchets 1/4" & 3/8" Extensions Masking Tape Door Panel Removal Tool

Tech Notes

- No drilling or cutting required.
- Bolts into existing hood hinge.
- Mil-Spec Rubber Vibration Dampener utilized between mount and fender.
 - Fits up to a 6.7" light!

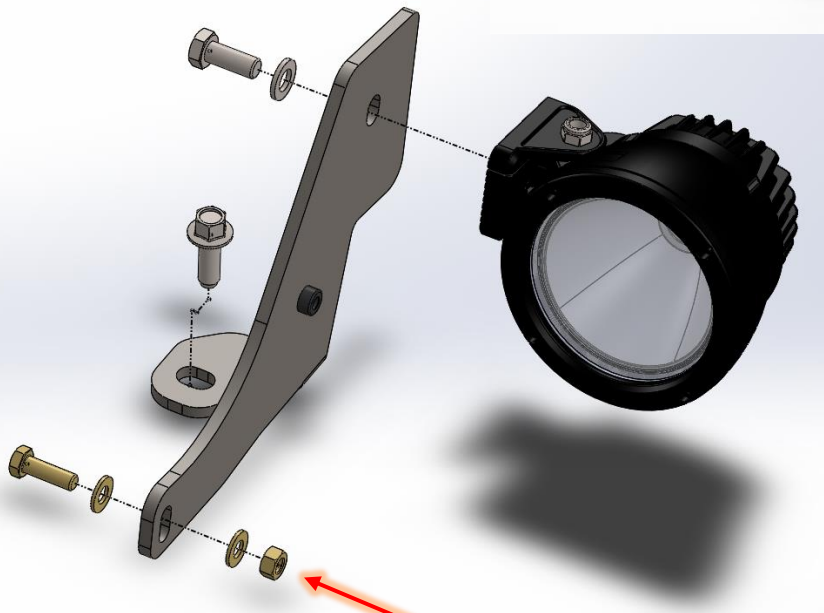
For questions or help with the installation, please call SDHQ Offroad @ 480-633-2929
 Mon.-Fri. 8:00am-5:30pm and Sat. 8:00am-3:30pm Arizona Time. www.sdhqoffroad.com

Reverse direction of light mounting bolt for a clean look



Factory hood Hinge Bolt

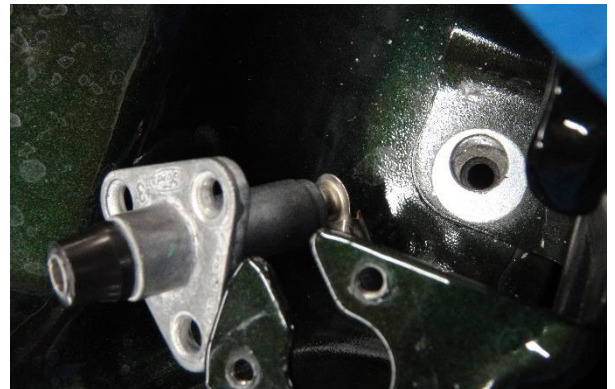
Driver Side Shown



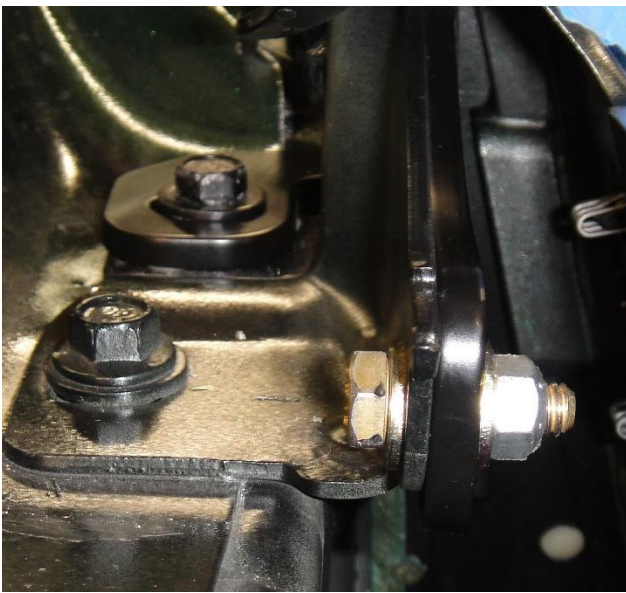
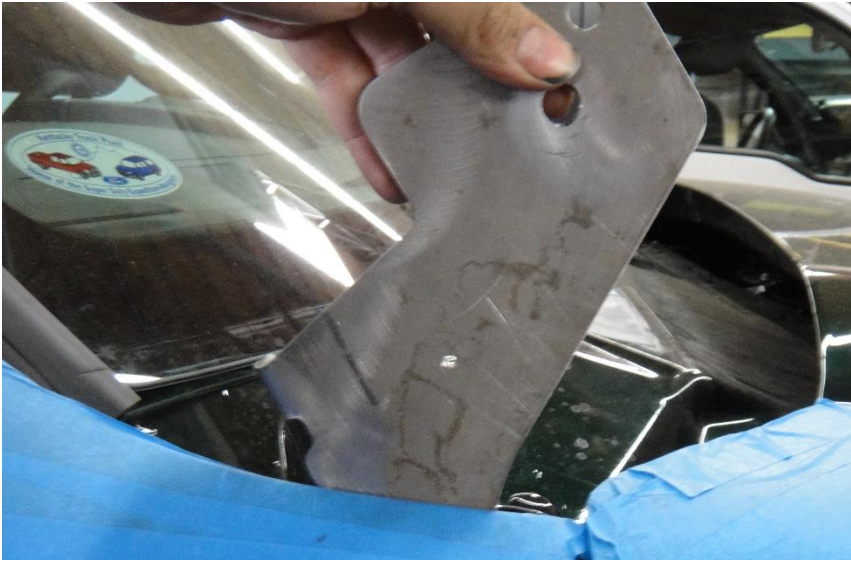
Bolts through existing hole in front of hood hinge

Installation Instructions:

- 1:** Un-Box your SDHQ 2011+ Ford Super Duty A-Pillar Light Mount System and lay out on a clean table. Verify that all parts are present and familiarize yourself with them.
- 2:** Flip up your windshield wipers up as if you were going to be cleaning your windshield, locate the small tab on the underside of the wiper arm where it attaches to the shaft. Pull out on the tab and lift the wiper arms off of the shafts and set aside. Remove the radio antenna
- 3:** Open your hood. Using masking tape, tape off the top outer edges of the hood by the cowl and top back edges of the fenders by where you will be working.
- 4:** Now you are going to remove the plastic top half of the driver side cowl for access. Gently pry up on the visible clips that hold on the top plastic half of the cowl and slowly work it off being careful not to distort or break any clips. The entire top half is only held in by snap in clips, the ones you can see in the front, and some hidden underneath in the back. A good tug, pulling up closest to the remaining engaged clips works best for removal. Once the driver side has been un-clipped set it aside in the engine bay, there is enough slack in the windshield washer lines to leave them attached. Repeat process for passenger side
- 5:** Remove the (3) 7mm head bolts that attach the antenna mount to its bracket. Pull up on the antenna mount so that it is raised high enough to be removed from its mounting bracket through the slot.



- 6:** With the hood down remove the rear hood hinge bolts. Slide your passenger side light mount bracket into position, start from the rear, angle down and forward. Thread the factory hood hinge bolt through the mount, and leave loose for now. Thread the provided 5/16" bolt through the mount and existing hole in the front of the hood hinge, and leave loose for now.
- 7:** Settle the mount into place. Remove masking tape. Install provided clear vinyl protective strips to the top corner of the fender where the mount resides. Tighten 5/16" Bolt, and then the hood hinge bolt. If alignment is off, loosen bolts adjust as needed and retighten. Note: If mount is too tight against the fender, loosen the top bolts along the fender, this will allow the fender to move slightly outward.



8: Repeat for driver side.

9: Install and wire your lights.

10: Put everything back together and enjoy!

*****Double check all hardware is installed correctly and tight*****

*****Re-torque ALL bolts after 100 miles*****



190 S McQueen Rd
Ste 109 Gilbert, AZ 85233
Phone: 480-633-2929 | Fax: 480-633-1791
www.sdhqoffroad.com

Follow us on:



Facebook



Instagram

For questions or help with the installation, please call SDHQ Offroad @ 480-633-2929
Mon.–Fri. 8:00am–5:30pm and Sat. 8:00am–3:30pm Arizona Time. www.sdhqoffroad.com