



SDHQ Motorsports
190 S McQueen Rd
Ste 109 Gilbert, AZ 85233
www.SDHQoffroad.com

Product Packing List

Product: SDHQ-10-1131/1132-G4

Description: 2015-20 Ford F150/2017-2020 Raptor, 2017-
Current F250+ 3D Printed Switch Pros Flow Through
Center Console Keypad Mount

_____ (1) SDHQ 3D Printed SP9100 Center Console Mount	SDHQ-10-1131-G4-A
_____ (2) SDHQ SP9100 3D Printed Backer	SDHQ-10-1131-G4-B
_____ (1) Hardware Package	SDHQ-10-1131-G4-C
_____ (4) #6 - 32 x 1 ¼" S.S. Studs	

OR

_____ (1) SDHQ 3D Printed RCR12 Center Console Mount	SDHQ-10-1132-G4-A
_____ (1) SDHQ RCR12 3D Printed Backer	SDHQ-10-1132-G4-B
_____ (1) Hardware Package	SDHQ-10-1131-G4-C
_____ (4) #6 - 32 x 1 ¼" S.S. Studs	

Inspected and Packaged By: _____ Date: _____

For questions or help with the installation, please email help@sdhqoffroad.com
Store front hours: Mon. – Fri. 8:00am – 5:30pm and Sat. 9:00am – 2:00pm Arizona Time.



SDHQ Motorsports
 190 S McQueen Rd
 Ste 109 Gilbert, AZ 85233
www.SDHQoffroad.com

INSTALLATION INSTRUCTIONS

Product: SDHQ-10-1131/1132-G4

Description: 2015-20 Ford F150/2017-2020 Raptor, 2017-Current F250+ 3D Printed Switch Pros Flow Through Center Console Keypad Mount



<u>Parts List</u>	<u>Hardware List</u>	<u>Required Tools</u>
(1) SDHQ 3D Printed SP9100 Center Console Mount SDHQ-10-1131-G4-A (2) SDHQ SP9100 3D Printed Backer SDHQ-10-1131-G4-B (1) Hardware Package SDHQ-10-1131-G4-C *OR* (1) SDHQ 3D Printed RCR12 Center Console Mount SDHQ-10-1132-G4-A (1) SDHQ RCR12 3D Printed Backer SDHQ-10-1132-G4-B (1) Hardware Package SDHQ-10-1131-G4-C	(4) #6 – 32 x 1 ¼" S.S. Studs	8mm Socket Plastic Panel Remover Small Screw Driver Drill 5/32" Drill Bit 3/4" Step Drill Bit

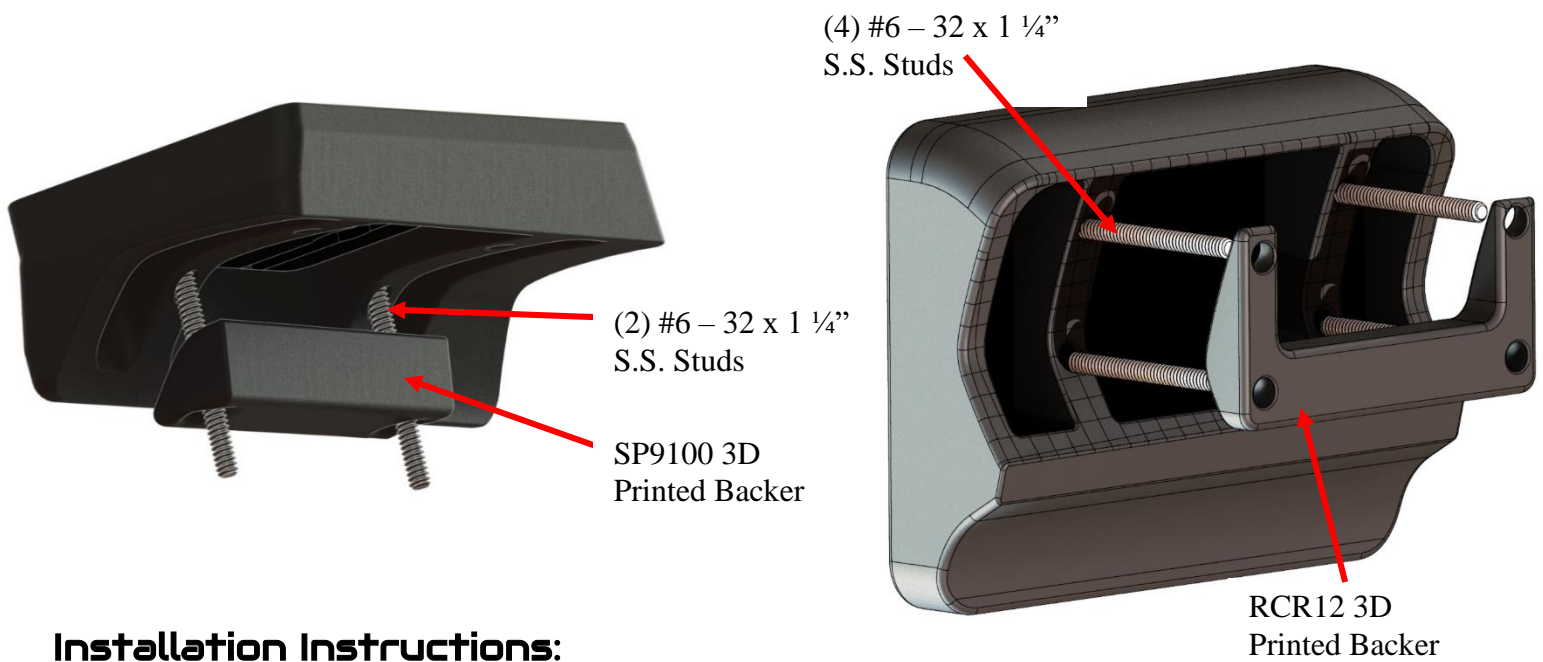
Tech Notes

Switch Pros Keypad utilizes Switch Pros hardware to mount except where noted
 Fits Trailer Backup Assist and Trailer Brake Assist, but will require spacing mount farther from the dash for F-250+ trucks.
 Instructions show install on an F-350, install on F-150/Raptor follows the same steps

****Approx. Install Time: 1 Hour (not including wiring)****

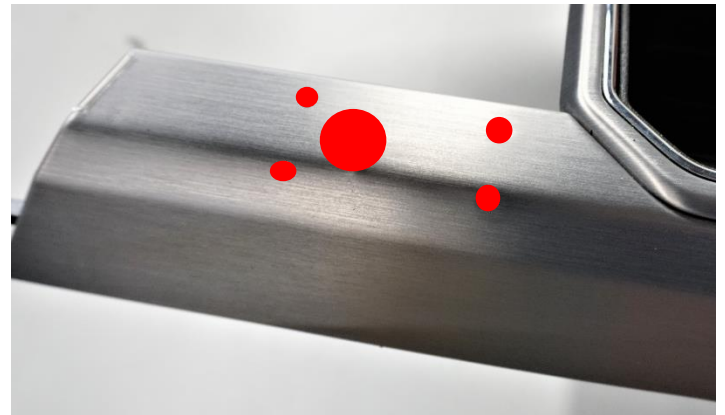
*****READ ALL INSTRUCTIONS THOROUGHLY FROM START TO FINISH BEFORE BEGINNING INSTALLATION!*****

For questions or help with the installation, please email help@sdhqoffroad.com
 Store front hours: Mon. – Fri. 8:00am – 5:30pm and Sat. 9:00am – 2:00pm Arizona Time.



Installation Instructions:

1. Unbox all parts and familiarize yourself with them.
2. Position your bare keypad mount on the center console as pictured, leave about 1/16” between the mount and the face of the center stack (or enough room to clear the Trailer Backup/Brake Assist knob if equipped). Mark the panel through the holes in the mount and mark a 3/4” hole in the offset forwards of the center opening.

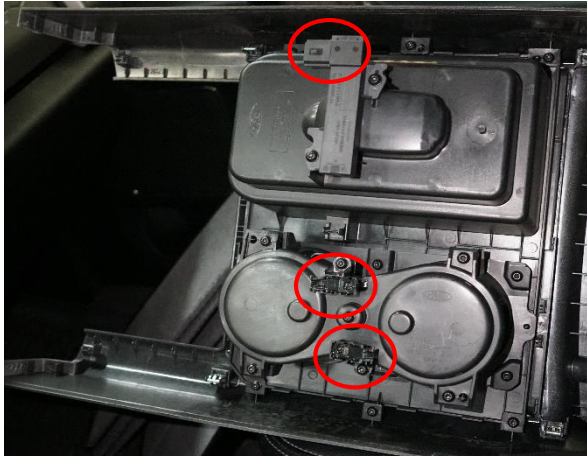


3. Now remove your marked panel by opening the center console and lifting on the back side of the trim as shown. Slowly work your way forward to unclip the panel fully.



For questions or help with the installation, please email help@sdhqoffroad.com
Store front hours: Mon. – Fri. 8:00am – 5:30pm and Sat. 9:00am – 2:00pm Arizona Time.

- If your F250+ truck is equipped with LED lit cup holders and wireless phone charging, there will be two LED lights in the cup holders and another connector under the trim panel that will need to be removed before the panel can be taken from the truck. If your truck does not have these options or has others, proceed carefully and make note of where connectors are located for your panel.



- With the panel now marked and removed, place the bare keypad mount over your marks and carefully drill the needed holes for the studs with your 5/32" drill bit through the bare mount. Use your stepper drill bit to drill the hole for the wire harness.



- Install the keypad into the mount and thread in the switch pro supplied studs on the narrower half of the mount. The longer 1 1/4" studs thread in on the drivers side of the mount for the SP9100 and use all of the longer studs for the RCR12



- Install mount to modified panel, using the 3D printed backer (shown on page 4) on the back side of the long studs, tighten all hardware down with switch pros supplied nylock nuts.

- Wire and reinstall your panel with attached keypad and enjoy your SDHQ 3D printed Switch Pros Keypad Center Console Mount!



For questions or help with the installation, please email help@sdhqoffroad.com
 Store front hours: Mon. – Fri. 8:00am – 5:30pm and Sat. 9:00am – 2:00pm Arizona Time.

*****Double check all hardware is installed correctly and tight*****

*****Re-torque ALL bolts after 100 miles*****



190 S McQueen Rd
Ste 109 Gilbert, AZ 85233
www.sdhqoffroad.com

Follow us on:



Facebook



Instagram

For questions or help with the installation, please email help@sdhqoffroad.com
Store front hours: Mon. – Fri. 8:00am – 5:30pm and Sat. 9:00am – 2:00pm Arizona Time.