



**SDHQ Motorsports**  
**190 S McQueen Rd**  
**Ste 109 Gilbert, AZ 85233**  
**Phone: 480-633-2929**

---

## Product Packing List

**Product:** SDHQ-10-1131-G4

**Description:** 2015-20 Ford F150/Raptor, 2017+ F250+ Switch  
Pros SP-9100 Flow Through Center Console Keypad Mount

_____ (1) SDHQ 3D Printed SP9100 Center Console Mount	SDHQ-10-1131-G4-A
_____ (1) SDHQ 3D Printed Backer	SDHQ-10-1131-G4-B
_____ (1) Hardware Package	SDHQ-10-1131-G4-C
_____ (2) #6 - 32 x 1 ¼" S.S. Studs	

**Inspected and Packaged By:** \_\_\_\_\_ **Date:** \_\_\_\_\_

For questions or help with the installation, please call SDHQ Offroad @ 480-633-2929  
Mon.-Fri. 8:00am-5:30pm and Sat. 8:00am-3:30pm Arizona Time. [www.sdhqoffroad.com](http://www.sdhqoffroad.com)





SDHQ Motorsports  
 190 S McQueen Rd  
 Ste 109 Gilbert, AZ 85233  
 Phone: 480-633-2929

## INSTALLATION INSTRUCTIONS

**Product:** SDHQ-10-1131-G4

**Description:** 2015-20 Ford F150/Raptor, 2017+ F250+ Switch Pros SP-9100 Flow Through Center Console Keypad Mount



<u>Parts List</u>	<u>Hardware List</u>	<u>Required Tools</u>
(1) SDHQ 3D Printed SP9100 Center Console Mount SDHQ-10-1131-G4-A (1) SDHQ 3D Printed Backer SDHQ-10-1131-G4-B (1) Hardware Package SDHQ-10-1131-G4-C	(2) #6 – 32 x 1 ¼" S.S. Studs	8mm Socket Plastic Panel Remover Small Screw Driver Drill 5/32" Drill Bit 3/4" Step Drill Bit

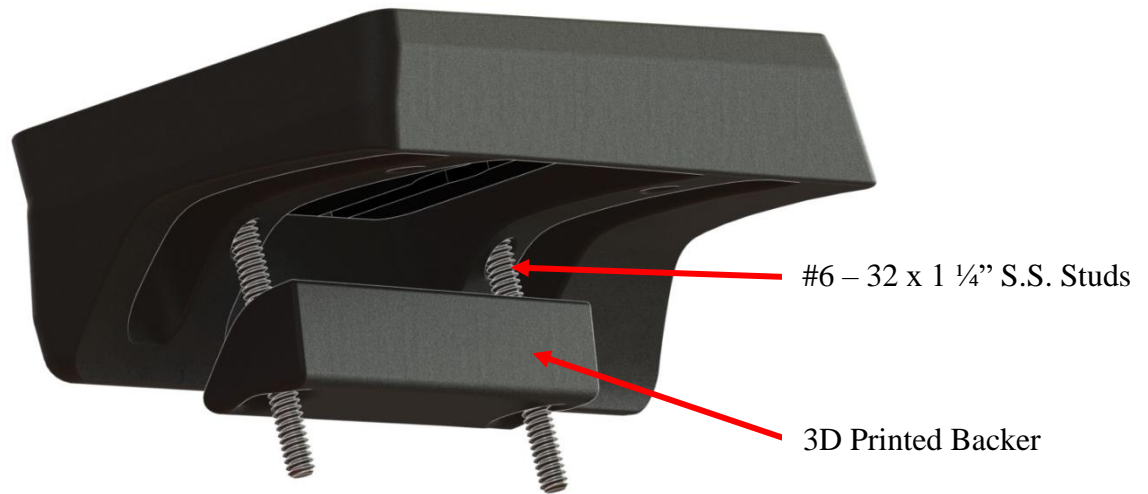
### **Tech Notes**

Switch Pros Keypad utilizes Switch Pros hardware to mount except where noted  
 Fits Trailer Backup Assist and Trailer Brake Assist, but will require spacing mount farther from the dash for F-250+ trucks.  
 Instructions show install on an F-350, install on F-150/Raptor follows the same steps

**\*\*Approx. Install Time: 1 Hour (not including wiring)\*\***

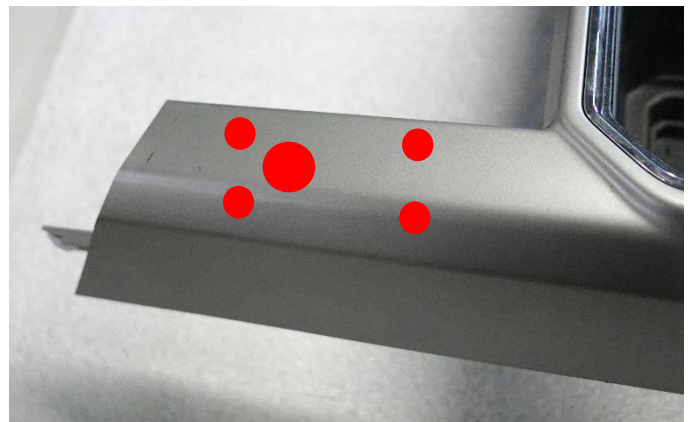
**\*\*\*READ ALL INSTRUCTIONS THOROUGHLY FROM START TO FINISH BEFORE BEGINNING INSTALLATION!\*\*\***

For questions or help with the installation, please call SDHQ Offroad @ 480-633-2929  
 Mon.–Fri. 8:00am–5:30pm and Sat. 8:00am–3:30pm Arizona Time. [www.sdhqoffroad.com](http://www.sdhqoffroad.com)



### **Installation Instructions:**

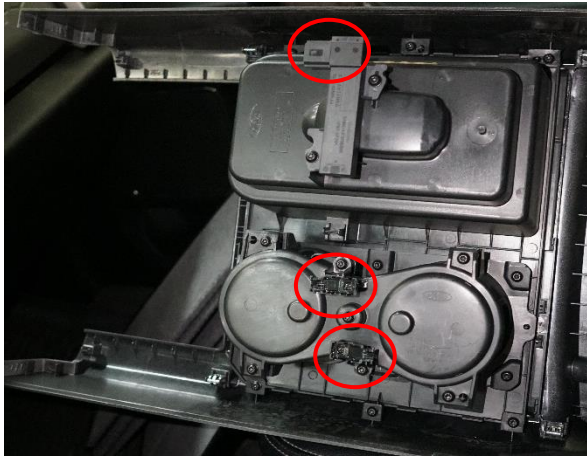
1. Unbox all parts and familiarize yourself with them.
2. Position your bare keypad mount on the center console as pictured, leave about 1/16” between the mount and the face of the center stack (or enough room to clear the Trailer Backup/Brake Assist knob if equipped). Mark the panel through the holes in the mount and mark a 3/4” hole in the offset forwards of the center opening.



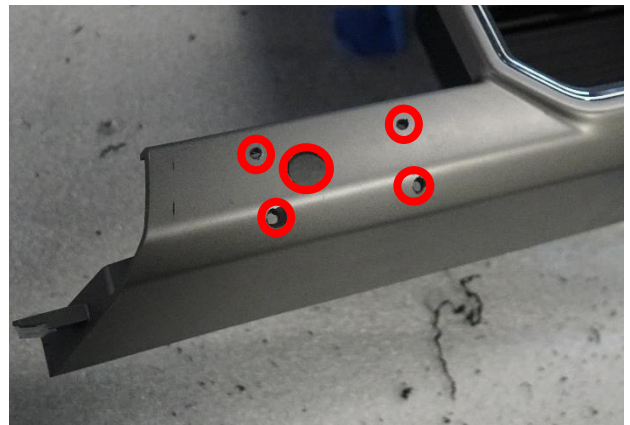
3. Now remove your marked panel by opening the center console and lifting on the back side of the trim as shown. Slowly work your way forward to unclip the panel fully.



4. If your F250+ truck is equipped with LED lit cup holders and wireless phone charging, there will be two LED lights in the cup holders and another connector under the trim panel that will need to be removed before the panel can be taken from the truck. If your truck does not have these options or has others, proceed carefully and make note of where connectors are located for your panel.



5. With the panel now marked and removed, place the bare keypad mount over your marks and carefully drill the needed holes for the studs with your 5/32" drill bit through the bare mount. Use your stepper drill bit to drill the hole for the wire harness.



6. Install the keypad into the mount and thread in the switch pro supplied studs on the narrower half of the mount. The longer 1 1/4" studs thread in on the drivers side of the mount.



7. Install mount to modified panel, using the 3D printed backer (shown on page 4) on the back side of the long studs, tighten all hardware down with switch pros supplied nylock nuts.

8. Wire and reinstall your panel with attached keypad and enjoy your SDHQ 3D printed Switch Pros 9100 Keypad Center Console Mount!



**\*\*\*Double check all hardware is installed correctly and tight\*\*\***

**\*\*\*Re-torque ALL bolts after 100 miles\*\*\***



190 S McQueen Rd  
Ste 109 Gilbert, AZ 85233  
Phone: 480-633-2929 | Fax: 480-633-1791  
[www.sdhqoffroad.com](http://www.sdhqoffroad.com)

Follow us on:



Facebook



Instagram

For questions or help with the installation, please call SDHQ Offroad @ 480-633-2929  
Mon.–Fri. 8:00am–5:30pm and Sat. 8:00am–3:30pm Arizona Time. [www.sdhqoffroad.com](http://www.sdhqoffroad.com)