



SDHQ Motorsports
190 S McQueen Rd
Ste 109 Gilbert, AZ 85233
Phone: 480-633-2929

Product Packing List

Product: *SDHQ-02-3003-T2*

Description: **SDHQ HD Accessory Battery Terminal Kit**

_____ (1) SDHQ Billet Positive Battery Terminal	SDHQ-02-3003-T2-P
_____ (1) SDHQ Billet Negative Battery Terminal	SDHQ-02-3003-T2-N
_____ (1) SDHQ Negative Terminal Stud	SDHQ-02-3003-T2-A
_____ (1) Hardware Package	SDHQ-02-3003-T2-B
_____ (1) 3" of 3/4" Heat Shrink	
_____ (1) 1-2GA Copper Compression Lug	
_____ (2) 5/16" - 18 x 1 1/2" Battery Terminal Bolt	
_____ (2) 5/16" - 18 Battery Shoulder Nut	
_____ (4) 1/4" - 20 x 1/2" S.S. Hex Head Bolt	
_____ (4) 1/4" S.S. Washer	
_____ (2) 5/16" - 18 x 1" S.S. Hex Head Bolt	
_____ (2) 5/16" S.S. Washer	
_____ (2) 3/8" - 16 x 2" S.S. Hex Head Bolt	
_____ (4) 3/8" S.S. Washers	
_____ (2) 3/8" - 16 S.S. Nuts	
_____ (1) Small Tube of Anti-Seize	

Inspected and Packaged By: _____ **Date:** _____

For questions or help with the installation, please call SDHQ Offroad @ 480-633-2929
Mon.-Fri. 8:00am-5:30pm and Sat. 8:00am-3:30pm Arizona Time. www.sdhqoffroad.com



SDHQ Motorsports
190 S McQueen Rd
Ste 109 Gilbert, AZ 85233
Phone: 480-633-2929

INSTALLATION INSTRUCTIONS

Product: SDHQ-02-3003-T2

Description: SDHQ HD Accessory Battery Terminal Kit



Parts List	Hardware List	Required Tools
<ul style="list-style-type: none"> (1) SDHQ Positive Battery Terminal SDHQ-02-3003-T2-P (1) SDHQ Negative Battery Terminal SDHQ-02-3003-T2-N (1) SDHQ Negative Terminal Stud SDHQ-02-3003-T2-A (1) Hardware Package SDHQ-02-3003-T2-B 	<ul style="list-style-type: none"> (1) 3" of 3/4" Heat Shrink (1) 1-2GA Copper Compression Lug (2) 5/16" – 18 x 1 1/2" Battery Terminal Bolt (2) 5/16" – 18 Battery Shoulder Nut (4) 1/4" – 20 x 1/2" S.S. Hex Head Bolt (4) 1/4" S.S. Washers (2) 5/16" – 18 x 1" S.S. Hex Head Bolt (2) 5/16" S.S. Washer (2) 3/8" – 16 x 2" S.S. Hex Head Bolt (4) 3/8" S.S. SAE Washer (2) 3/8" – 16 S.S. Nuts (1) Small Tube of Anti-Seize 	<ul style="list-style-type: none"> 7/16", 1/2", 9/16" Sockets 10mm, 12mm Sockets Ratchet 9/16" Wrench Rubber Mallet Pliers

Tech Notes

Apply Anti-Seize to all hardware.
 Fits most Toyota, Nissan and similar style terminals.
 See SDHQ-02-380(2/4/6/10) for (1-2GA, 4GA, 6GA, 10GA) Compression Lug Kits.
 SDHQ-02-3002-U1-E is an optional Battery (-) to Body Ground wire for our recommended wiring configuration.
 Extra lugs may be required depending on your vehicle.
 Follow the Torque Specifications on the bottom of Page 5.
Approx. Install Time: 1 Hour

For questions or help with the installation, please call SDHQ Offroad @ 480-633-2929
 Mon.–Fri. 8:00am–5:30pm and Sat. 8:00am–3:30pm Arizona Time. www.sdhqoffroad.com

SDHQ Positive/Negative Battery Terminal

5/16" Battery
Hardware

3/8" Hardware

5/16" Hardware

1/4" Hardware

SDHQ Negative Battery Terminal with Stud

5/16" - 18 x 1" S.S.
Hex Head Bolt

SDHQ Negative
Terminal Stud

*****READ ALL INSTRUCTIONS THOROUGHLY FROM START TO FINISH BEFORE BEGINNING INSTALLATION! *****

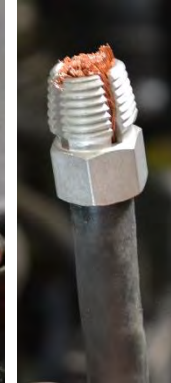
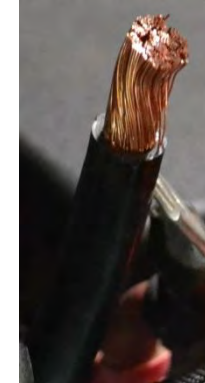
Installation Instructions:

1. Unbox your SDHQ Battery Terminal Upgrade kit and check over all parts. Familiarize yourself with the parts.
2. Disconnect the stock battery terminals using the 10mm and 12mm sockets. Remove all wire terminals from the stock battery terminals.
3. If your stock negative ground wire is directly wired to your negative battery terminal, there are two wiring configurations to choose from. The recommended configuration is shown below in Step 4. This requires the negative battery terminal to be cut off of the ground wires. A new Battery (-) to Body Ground will need to be purchased (SDHQ-02-3003-U1-E) or made. The alternative configuration is described below in Step 6 and retains the negative battery terminal. 4Runners, Tundras and FJs can skip Steps 4 and 6.

For questions or help with the installation, please call SDHQ Offroad @ 480-633-2929
Mon.-Fri. 8:00am-5:30pm and Sat. 8:00am-3:30pm Arizona Time. www.sdhqoffroad.com

Negative Terminal Install

- 4. Recommended Wiring Configuration.** The larger diameter negative wire on the stock battery needs to be cut flush with the terminal as pictured right. Strip 1" of insulation off the wire. Place the 3" of $\frac{3}{4}$ " heat shrink over wire below the exposed strands. Slide the compression end of the 1-2GA lug over the stripped negative wire as pictured right. Using the $\frac{9}{16}$ " wrench and pliers, tighten the compression lug until it is snug. Be cautious not to over tighten as the threads can strip. Heat the 2" of $\frac{3}{4}$ " heat shrink over the cast copper lug and wire.
- 5. Installing the Battery Terminals.** Place the SDHQ Negative Battery Terminal on top of the negative battery post. Lightly tap on the top of the terminal using a rubber mallet to set it on the battery post. Tighten the $\frac{5}{16}$ " Battery Bolt and Nut using $\frac{1}{2}$ " wrenches on both to prevent damaging the battery post.
- 6. Alternative Wiring Configuration.** This configuration will use the SDHQ Negative Terminal Stud, as pictured on Page 4. Use the $\frac{5}{16}$ " – 18 x 1" S.S. Hex Head Bolt to secure the Terminal Stud to the Terminal. Place the stock battery terminal over the Negative Terminal Stud and tighten. No wire cutting is required for this configuration.
- 7.** With the terminal and your choice of wiring configuration installed, finish wiring. If the stock negative terminal was removed, connect the Battery (-) to Body Ground and 1-2GA lug. If the stock negative terminal was kept, connect the terminal to the SDHQ Negative Terminal Stud. Finish wiring any accessories to the negative terminal and tighten all hardware.



W/ Terminal Stud



W/O Terminal Stud



Positive Terminal Install

- 8. Installing the Battery Terminal.** Place the SDHQ Positive Battery Terminal on top of the positive battery post. Lightly tap on the top of the terminal using a rubber mallet to set it on the battery post. Tighten the $\frac{5}{16}$ " Battery Bolt and Nut using $\frac{1}{2}$ " wrenches on both to prevent damaging the battery post.
- 9.** Use the top $\frac{5}{16}$ " hole for the factory terminals for factory wiring if possible. Connect any other accessories to the terminals as needed. Tighten all hardware.

Torque Specifications

- 1.** Torque the $\frac{1}{4}$ " – 20 bolts to 4 ft-lb. Torque the $\frac{5}{16}$ " – 18 bolts to 8 ft-lb. Torque the $\frac{3}{8}$ " – 16 hardware to 18 ft-lb.

*****Double check all hardware is installed correctly and tight*****

*****Re-torque ALL bolts after 100 miles*****



190 S McQueen Rd
Ste 109 Gilbert, AZ 85233
Phone: 480-633-2929 | Fax: 480-633-1791
www.sdhqoffroad.com

Follow us on:



Facebook



Instagram

For questions or help with the installation, please call SDHQ Offroad @ 480-633-2929
Mon.–Fri. 8:00am–5:30pm and Sat. 8:00am–3:30pm Arizona Time. www.sdhqoffroad.com