



**SDHQ Motorsports**  
190 S McQueen Rd  
Ste 109 Gilbert, AZ 85233  
[www.SDHQoffroad.com](http://www.SDHQoffroad.com)

---

## Product Packing List

**Product:** *SDHQ-02-3003-D2*

**Description:** SDHQ Built Billet Terminal and Distribution Kit

_____ (1) Billet Positive Battery Terminal	SDHQ-02-3003-T2-P-Rev2
_____ (1) Billet Negative Distribution Block	SDHQ-02-3003-D2-N
_____ (1) Hardware Package	SDHQ-02-3003-D2-A
_____ (1) Positive Battery Protective Boot	
_____ (1) Red Post Washer	
_____ (1) M8 - 1.25 x 30mm S.S. Socket Head Bolt	
_____ (1) 5/16" - 18 x 1 1/2" Battery Terminal Bolt	
_____ (1) 5/16" - 18 Battery Shoulder Nut	
_____ (5) 1/4" - 20 x 1/2" S.S. Hex Head Bolt	
_____ (5) 1/4" S.S. Washer	
_____ (1) 5/16" - 18 x 1" S.S. Hex Head Bolt	
_____ (1) 5/16" - 18 x 3/4" S.S. Hex Head Bolt	
_____ (2) 5/16" S.S. Washer	
_____ (2) 3/8" - 16 x 2" S.S. Hex Head Bolt	
_____ (4) 3/8" S.S. Washers	
_____ (2) 3/8" - 16 S.S. Nuts	
_____ (1) Small Tube of Anti-Seize	

Inspected and Packaged By: \_\_\_\_\_ Date: \_\_\_\_\_

For questions or help with the installation, please email [help@sdhqoffroad.com](mailto:help@sdhqoffroad.com)  
Store front hours: Mon. - Fri. 8:00am - 5:30pm and Sat. 9:00am - 2:00pm Arizona Time.



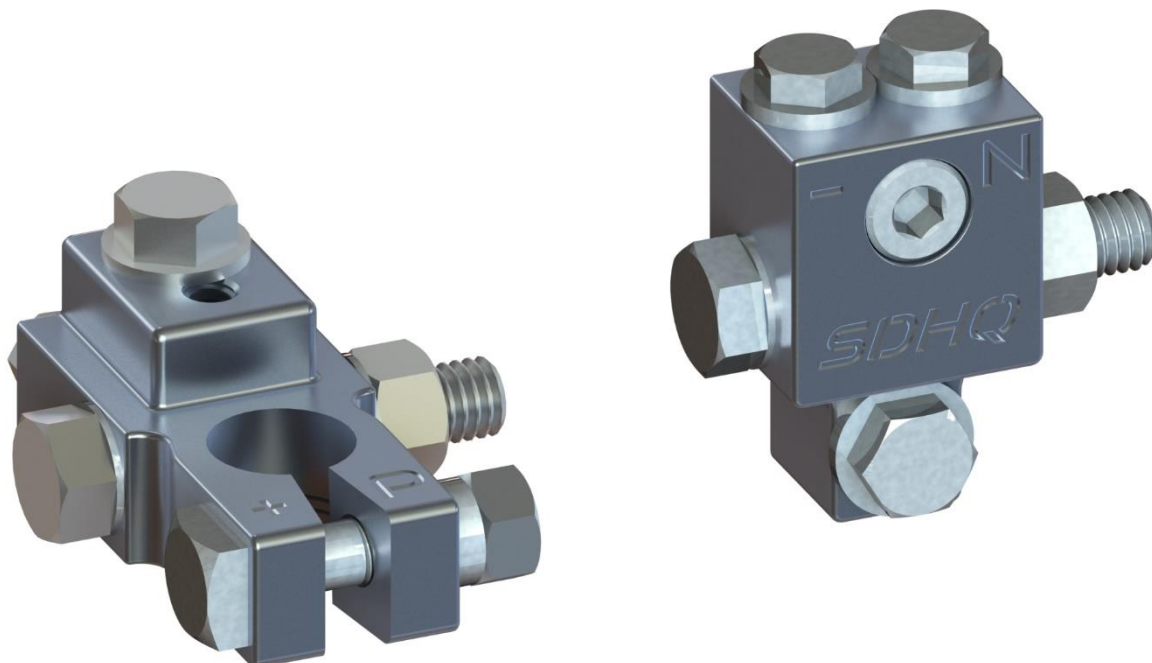


SDHQ Motorsports  
 190 S McQueen Rd  
 Ste 109 Gilbert, AZ 85233  
[www.SDHQoffroad.com](http://www.SDHQoffroad.com)

## INSTALLATION INSTRUCTIONS

**Product:** SDHQ-02-3003-D2

**Description:** SDHQ Built Billet Terminal and Distribution Kit



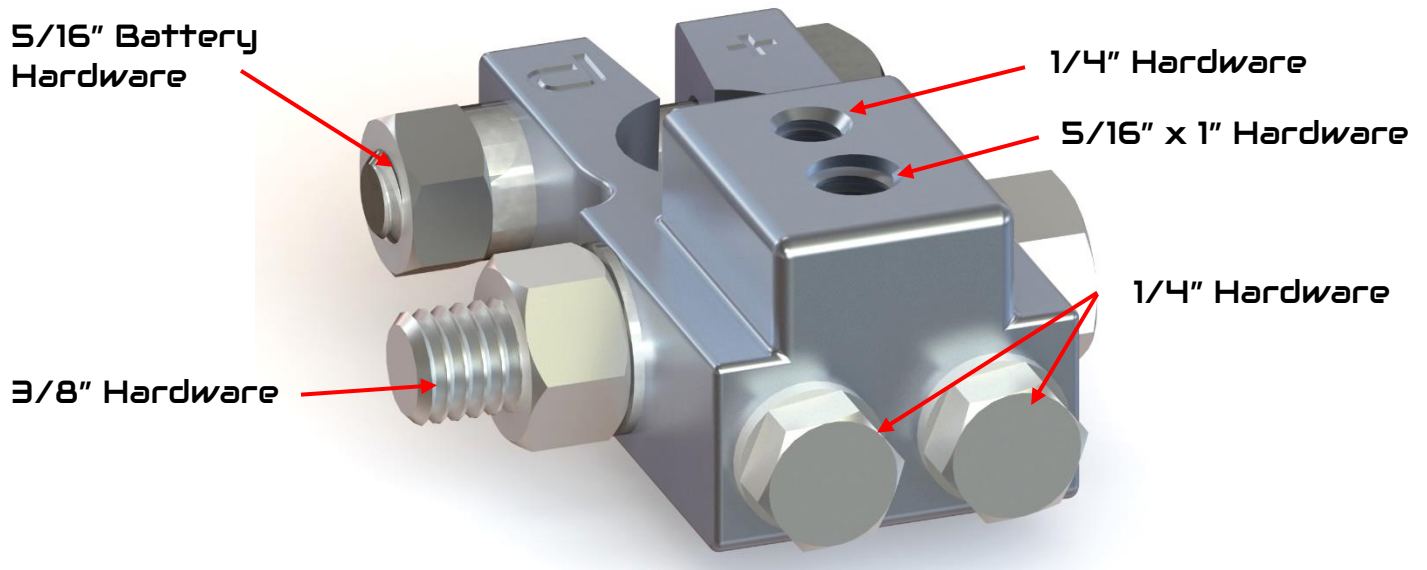
<u>Parts List</u>	<u>Hardware List</u>	<u>Required Tools</u>
(1) Billet Positive Battery Terminal SDHQ-02-3003-T2-P-Rev2 (1) Billet Negative Battery Block SDHQ-02-3003-D2-N (1) Hardware Package SDHQ-02-3003-D2-A	(1) Positive Battery Protective Boot (1) Red Post Washer (1) M8 - 1.25 x 30mm S.S. Socket Head Bolt (1) 5/16" - 18 x 1 1/2" Battery Terminal Bolt (1) 5/16" - 18 Battery Shoulder Nut (5) 1/4" - 20 x 1/2" S.S. Hex Head Bolt (5) 1/4" S.S. Washer (1) 5/16" - 18 x 1" S.S. Hex Head Bolt (1) 5/16" - 18 x 3/4" S.S. Hex Head Bolt (2) 5/16" S.S. Washer (2) 3/8" - 16 x 2" S.S. Hex Head Bolt (4) 3/8" S.S. Washers (2) 3/8" - 16 S.S. Nuts (1) Small Tube of Anti-Seize	7/16", 1/2", 9/16" Sockets 10mm, 12mm Sockets Ratchet 9/16" Wrench Rubber Mallet Pliers Small flat head screw drivers

### Tech Notes

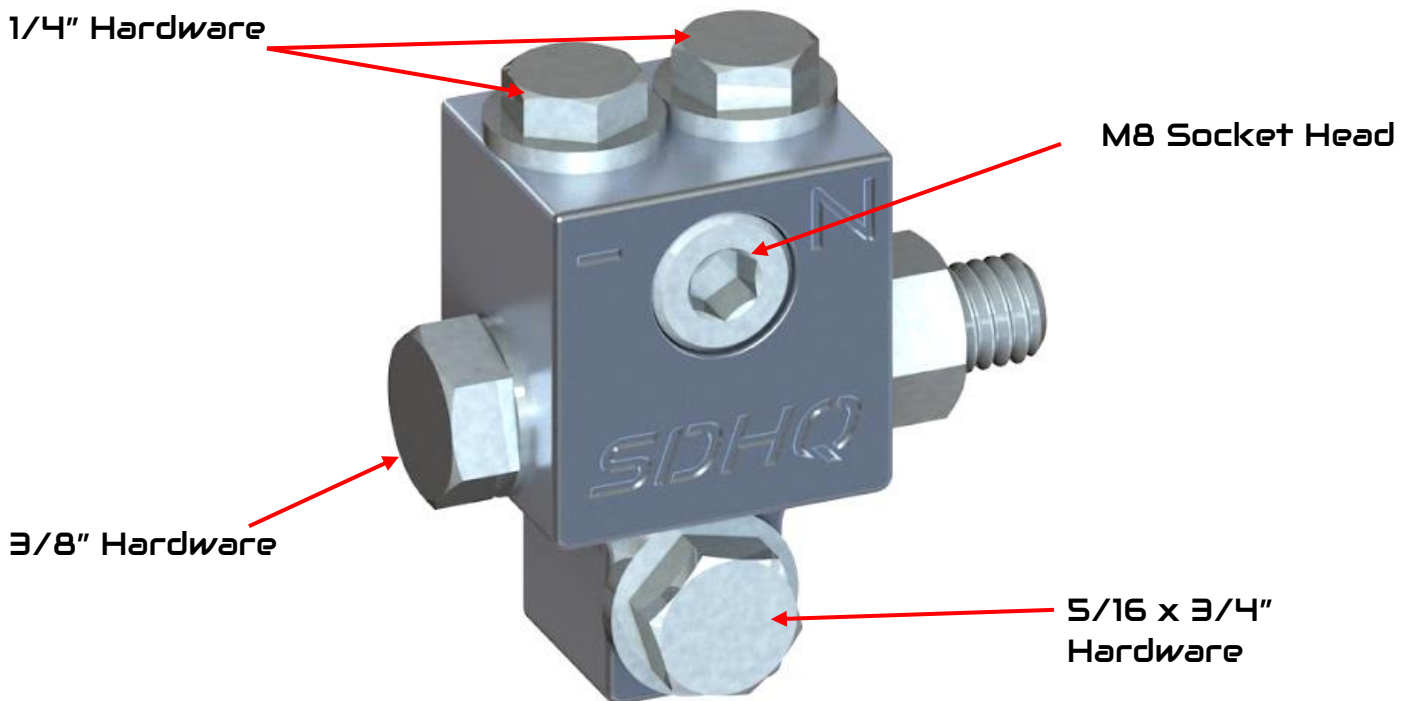
Apply Anti-Seize to all hardware.  
 Follow the Torque Specifications on the bottom of Page 4.  
 See SDHQ-02-37(01/04/10) for (1-2GA, 4-6GA, 1/0GA) Solder Lug Kits.  
 See SDHQ-02-38(02/04/06/10) for (1-2GA, 4GA, 6GA, 1/0GA) Compression Lug Kits.  
**Approx. Install Time: 1 Hour**

For questions or help with the installation, please email [help@sdhqoffroad.com](mailto:help@sdhqoffroad.com)  
 Store front hours: Mon. - Fri. 8:00am - 5:30pm and Sat. 9:00am - 2:00pm Arizona Time.

## SDHQ Positive Battery Terminal (without Stud)



## SDHQ Negative Distribution Block



\*\*\*READ ALL INSTRUCTIONS THOROUGHLY FROM START TO FINISH BEFORE BEGINNING INSTALLATION!\*\*\*

### Installation Instructions:

#### Bolt Torque Specifications

Torque the 1/4" bolts to 4 ft-lb. Torque the 5/16" and M8 hardware to 8 ft-lb. Torque the 3/8" hardware to 18 ft-lb.

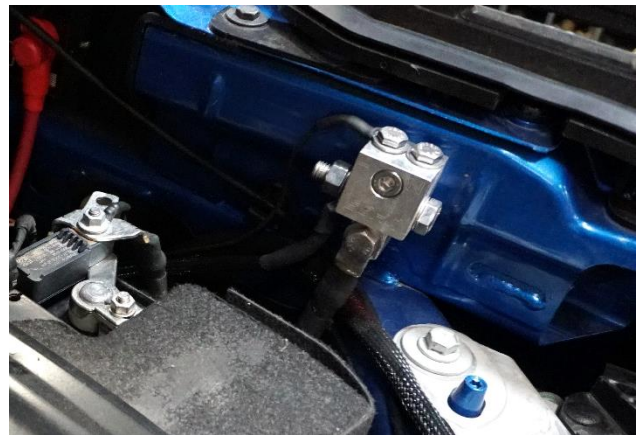
For questions or help with the installation, please email [help@sdhqoffroad.com](mailto:help@sdhqoffroad.com)  
Store front hours: Mon. – Fri. 8:00am – 5:30pm and Sat. 9:00am – 2:00pm Arizona Time.

## 2021+ Ford Bronco

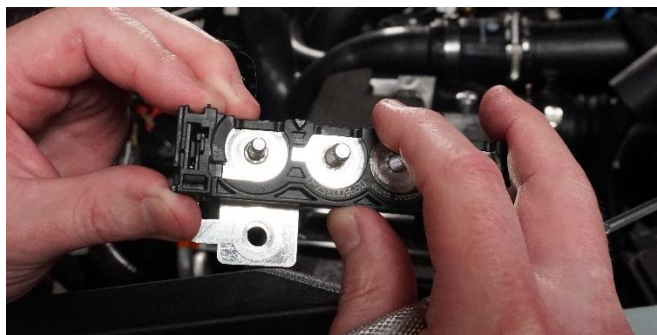
1. Unbox your SDHQ Built Complete Billet Battery Terminal Kit and check over all parts. Familiarize yourself with the parts and diagrams above. Disconnect the factory positive battery terminal using a 10mm socket. Remove the terminal from the factory positive distribution bar circled in blue and discard the terminal.



2. **Negative Distribution Block Install:** Remove the 12mm bolt securing the factory ground wire to the fender. Position the Negative Distribution Block and secure using supplied M8 Socket Head Bolt. Secure the factory ground wire to the 5/16" hole and attach any other accessories to the Negative Distribution Block.



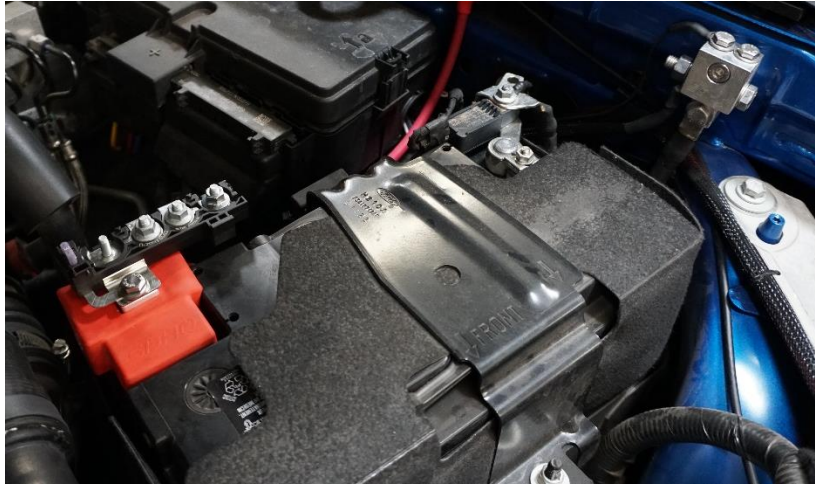
3. **Positive Terminal Install:** The factory power distribution bar will need to be removed from the cover. To do so, disconnect any wires connected to the distribution bar and remove from the vehicle. Using small flat head screw drivers or similar tools, pry each clip from the cover and remove the power distribution bar. Reconnect all wires to the power distribution bar as found.



For questions or help with the installation, please email [help@sdhqoffroad.com](mailto:help@sdhqoffroad.com)  
Store front hours: Mon. – Fri. 8:00am – 5:30pm and Sat. 9:00am – 2:00pm Arizona Time.



- 4. Install Continued:** Place the Red Post Washer and SDHQ Positive Battery Terminal on top of the positive battery post. Lightly tap on the top of the terminal using a rubber mallet to set it on the battery post. Tighten the 5/16" Battery Bolt and Nut using 1/2" wrenches on both to prevent damaging the battery post.
- 5.** Connect any other accessories to the terminals as needed. Tighten all hardware. Install the SDHQ Positive Terminal Boot. Connect the power distribution bar to the 1/4" hole on top of the positive battery terminal.



**\*\*\*Double check all hardware is installed correctly and tight\*\*\***

**\*\*\*Re-torque ALL bolts after 100 miles\*\*\***



190 S McQueen Rd  
Ste 109 Gilbert, AZ 85233  
[www.sdhqoffroad.com](http://www.sdhqoffroad.com)

Follow us on:



Facebook



Instagram

For questions or help with the installation, please email [help@sdhqoffroad.com](mailto:help@sdhqoffroad.com)  
Store front hours: Mon. – Fri. 8:00am – 5:30pm and Sat. 9:00am – 2:00pm Arizona Time.