



SDHQ Motorsports
190 S McQueen Rd
Ste 109 Gilbert, AZ 85233
Phone: 480-633-2929

Product Packing List

Product: *SDHQ-02-3003-C1*

Description: SDHQ Built Complete HD Billet Battery Terminal Kit

_____ (1) SDHQ Billet Positive Battery Terminal	SDHQ-02-3003-T1-P
_____ (1) SDHQ Billet Negative Battery Terminal	SDHQ-02-3003-T1-N
_____ (1) Hardware Package	SDHQ-02-3003-T1-A
_____ (1) Positive Terminal Insulator	
_____ (1) Negative Terminal Insulator	
_____ (1) Positive Terminal Post Washer	
_____ (1) Negative Terminal Post Washer	
_____ (2) 5/16" - 18 x 1 1/2" Battery Terminal Bolt	
_____ (2) 5/16" - 18 Battery Shoulder Nut	
_____ (2) 3/8" - 16 x 2" S.S. Hex Head Bolt	
_____ (4) 3/8" S.S. Washers	
_____ (2) 3/8" - 16 S.S. Nuts	

Inspected and Packaged By: _____ **Date:** _____

For questions or help with the installation, please call SDHQ Offroad @ 480-633-2929
Mon.-Fri. 8:00am-5:30pm and Sat. 8:00am-3:30pm Arizona Time. www.sdhqoffroad.com

**For questions or help with the installation, please call SDHQ Offroad @ 480-633-2929
Mon.–Fri. 8:00am–5:30pm and Sat. 8:00am–3:30pm Arizona Time. www.sdhqoffroad.com**

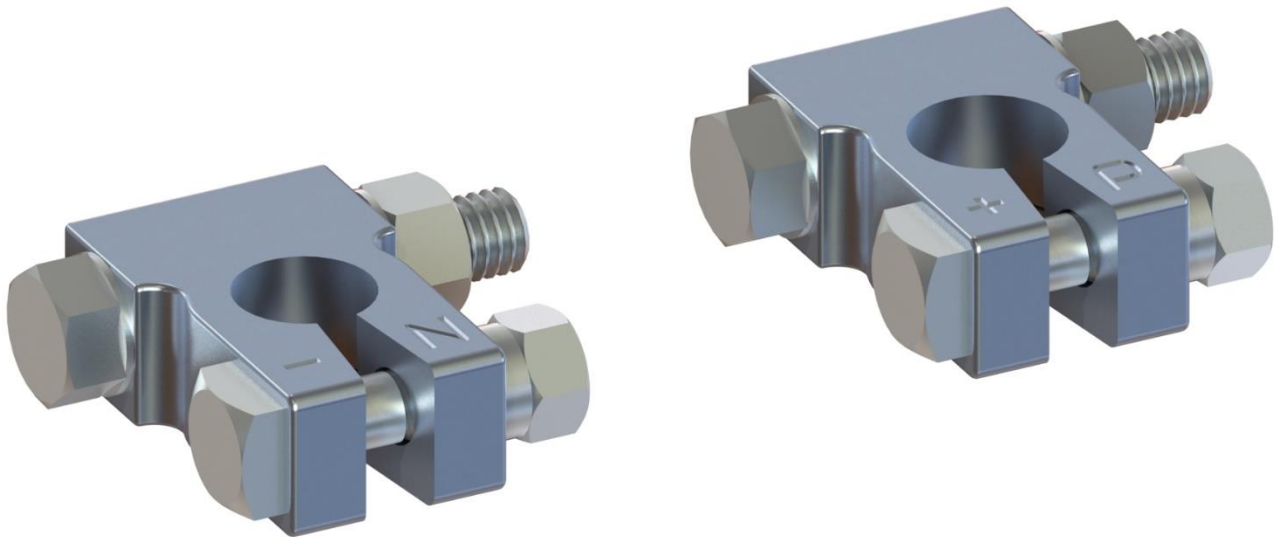


SDHQ Motorsports
 190 S McQueen Rd
 Ste 109 Gilbert, AZ 85233
 Phone: 480-633-2929

INSTALLATION INSTRUCTIONS

Product: SDHQ-02-3003-C1

Description: SDHQ Built Complete HD Billet Battery Terminal Kit



Parts List	Hardware List	Required Tools
(1) SDHQ Positive Battery Terminal SDHQ-02-3003-T1-P (1) SDHQ Negative Battery Terminal SDHQ-02-3003-T1-N (1) Hardware Package SDHQ-02-3003-T1-A	(1) Positive Terminal Insulator (1) Negative Terminal Insulator (1) Positive Terminal Post Washer (1) Negative Terminal Post Washer (2) 5/16" – 18 x 1 1/2" Battery Terminal Bolt (2) 5/16" – 18 Battery Shoulder Nut (2) 3/8" – 16 x 2" S.S. Hex Head Bolt (4) 3/8" S.S. Washers (2) 3/8" – 16 S.S. Nuts	1/2", 9/16" Wrenches Rubber Mallet Rubbing Alcohol and rag Tools required to remove your battery terminals

Tech Notes

3/8" Accessory Mounting bolt.
 Apply Anti-Seize on all Stainless Steel Hardware.
 Follow the Torque Specifications on the bottom of Page 4.
 See SDHQ-02-380(10/2/4/6) for (1/0GA, 1-2GA, 4GA, 6GA) Compression Lug Kits.
 SDHQ-02-3002-U1-E is an optional Battery (-) to Body Ground wire for our recommended wiring configuration.
Approx. Install Time: 30 Minutes

*****READ ALL INSTRUCTIONS THOROUGHLY FROM START TO FINISH BEFORE BEGINNING INSTALLATION!*****

For questions or help with the installation, please call SDHQ Offroad @ 480-633-2929
 Mon.–Fri. 8:00am–5:30pm and Sat. 8:00am–3:30pm Arizona Time. www.sdhqoffroad.com

Installation Instructions:

1. Unbox the parts and verify all parts are accounted for. Familiarize yourself with the parts.
2. Begin on the negative terminal on your battery. Remove the wires from the terminal, and then the terminal from your battery. Repeat for the positive terminal.
3. Clean your battery posts with rubbing alcohol and a rag. Install the terminal washers on the respective battery posts.
4. Install the positive and negative SDHQ HD Battery Terminals onto the respective battery post. Lightly tap on the top of the terminal using a rubber mallet to set it on the battery post. Tighten the 5/16" Battery Bolt and Nut, using ½" wrench on both to prevent damaging the battery post.
5. Finish by installing the terminal isolator over the positive wires and then connect the vehicle wires to the respective battery terminals. Enjoy your new SDHQ HD Battery Terminals!

Torque Specifications

1. Torque the 5/16" – 18 bolts to 8 ft-lb. Torque the 3/8" – 16 hardware to 18 ft-lb.

*****Double check all hardware is installed correctly and tight*****

*****Re-torque ALL bolts after 100 miles*****



**190 S McQueen Rd
Ste 109 Gilbert, AZ 85233
Phone: 480-633-2929 | Fax: 480-633-1791
www.sdhqoffroad.com**

Follow us on:



Facebook



Instagram

**For questions or help with the installation, please call SDHQ Offroad @ 480-633-2929
Mon.–Fri. 8:00am–5:30pm and Sat. 8:00am–3:30pm Arizona Time. www.sdhqoffroad.com**