



**SDHQ Motorsports**  
190 S McQueen Rd  
Ste 109 Gilbert, AZ 85233  
[www.SDHQoffroad.com](http://www.SDHQoffroad.com)

---

## Product Packing List

**Product:** SDHQ-02-1103-ARB(6/9/13)

**Description:** SDHQ Built ARB Twin Extension Harness

- \_\_\_\_\_ (1) SDHQ Built ARB Twin Extension Harness
- \_\_\_\_\_ (1) Hardware Package
  - \_\_\_\_\_ (1) 5 Way Metri-Pack 280 Plug
  - \_\_\_\_\_ (1) 5 Way Metri-Pack 280 TPA (Clip Lock)
  - \_\_\_\_\_ (1) 3 Way Metri-Pack 150 Plug
  - \_\_\_\_\_ (1) 3 Way Metri-Pack 150 TPA (Clip Lock)
  - \_\_\_\_\_ (1) Delphi Cable Cavity Plug - Dark Red
  - \_\_\_\_\_ (1) 10 gauge 1/4" Non-Insulated Eyelet
  - \_\_\_\_\_ (1) 10 gauge 5/16" Non-Insulated Eyelet
  - \_\_\_\_\_ (1) 10 gauge 3/8" Non-Insulated Eyelet
  - \_\_\_\_\_ (1) 1" Long 1/4" Dual Wall Heat Shrink Tubing
  - \_\_\_\_\_ (1) PG-21 16mm Cable Gland

Inspected and Packaged By: \_\_\_\_\_ Date: \_\_\_\_\_





SDHQ Motorsports  
 190 S McQueen Rd  
 Ste 109 Gilbert, AZ 85233  
[www.SDHQoffroad.com](http://www.SDHQoffroad.com)

## INSTALLATION INSTRUCTIONS

**Product:** SDHQ-02-1103-ARB(6/9/13)

**Description:** SDHQ Built ARB Twin Extension Harness



<u>Parts List</u>	<u>Hardware List</u>	<u>Required Tools</u>
<b>(1) SDHQ Built ARB Twin Extension Harness</b> SDHQ-02-1103-ARB(6, 9 or 13)	(1) 5 Way Metri-Pack 280 Plug (1) 5 Way Metri-Pack 280 TPA (Clip Lock) (1) 3 Way Metri-Pack 150 Plug (1) 3 Way Metri-Pack 150 TPA (Clip Lock) (1) Delphi Cable Cavity Plug – Dark Red (1) 10 gauge 1/4" Non-Insulated Eyelet (1) 10 gauge 5/16" Non-Insulated Eyelet (1) 10 gauge 3/8" Non-Insulated Eyelet (1) 1" Long 1/4" Dual Wall Heat Shrink Tubing (1) PG-21 16mm Cable Gland	<b>Basic Hand Tools</b> <b>Wire Crimpers</b> <b>Flush Cut Pliers</b> <b>Heat Gun</b> <b>(For Cable Gland Install)</b> <b>Drill</b> <b>1-1/8" Hole Saw</b>

### **Tech Notes**

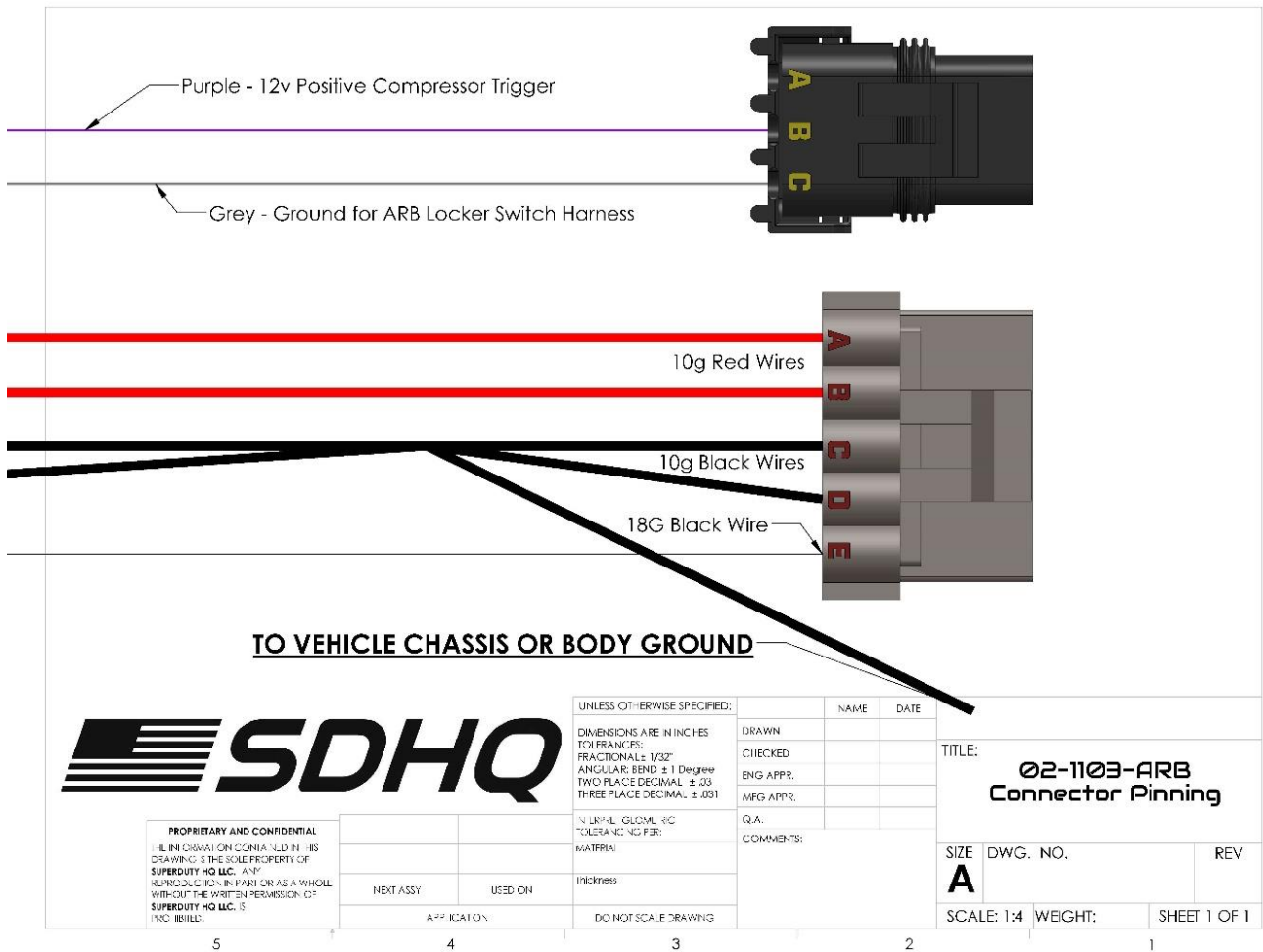
Harness comes un-pinned for ease of install  
 Drilling is only required if entering a storage box or interior  
 Approx. Install Time: 1 Hour for extension harness only

\*\*\*READ ALL INSTRUCTIONS THOROUGHLY FROM START TO FINISH BEFORE BEGINNING INSTALLATION!\*\*\*

### Installation Instructions:

For questions or help with the installation, please email [help@sdhqoffroad.com](mailto:help@sdhqoffroad.com)  
 Store front hours: Mon. – Fri. 8:00am – 5:30pm and Sat. 9:00am – 2:00pm Arizona Time.

1. Connect harness to the ARB Twin compressor harness (with the 2 large fuses). Starting from the battery side (disconnected), route your harness to your desired compressor location. Make sure to keep harness away from moving parts, exhaust, and sharp edges. Secure harness with desired zip ties or loom clamps. If needed bare pins can be temporarily electrical taped together for routing through tight areas.
2. Find a suitable Body or Chassis Ground location nearest the compressor. Using the provided Ring Terminals, choose the size that best fits your install. Slide the provided heat shrink tubing on to the extra ground wire. Strip the 10 AWG wire back approx. 5/16" and crimp on desired ring terminal. Slide heat shrink tubing over crimp and heat the tubing until it fully shrinks and the inner glue slightly oozes out. Pro Tip: Avoid directly pointing the heat gun at the loom to avoid melting.
3. If entering a storage box or interior, a cable gland is included. Find the best location and drill a 1-1/8" hole for the cable gland. Clean up any burrs and install cable gland.
4. Route harness through the cable gland and tighten at desired location.
5. Pin terminals into Metri-Pack plugs as shown in the diagram below. Once pins are secure, snap the TPA's (Terminal Position Assurance) clips into place. Insert the supplied Dark Red Cavity Plug into the A-location of the 3-Way connector.
6. Finish connecting the harness to the compressor, wire to battery and desired switch method.



For questions or help with the installation, please email [help@sdhqoffroad.com](mailto:help@sdhqoffroad.com)  
 Store front hours: Mon. – Fri. 8:00am – 5:30pm and Sat. 9:00am – 2:00pm Arizona Time.

**\*\*\*Double check all hardware is installed correctly and tight\*\*\***

**\*\*\*Re-torque ALL bolts after 100 miles\*\*\***



190 S McQueen Rd  
Ste 109 Gilbert, AZ 85233  
[www.sdhqoffroad.com](http://www.sdhqoffroad.com)

Follow us on:



Facebook



Instagram

For questions or help with the installation, please email [help@sdhqoffroad.com](mailto:help@sdhqoffroad.com)  
Store front hours: Mon. – Fri. 8:00am – 5:30pm and Sat. 9:00am – 2:00pm Arizona Time.