



SDHQ Motorsports
190 S McQueen Rd
Ste 109 Gilbert, AZ 85233

Product Packing List

Product: *SDHQ-00-1822-U1*

Description: **SDHQ Built Chase Rack Vertical Pro Eagle Jack Mounting Kit**

_____ (1) Pro Eagle Jack Mount	SDHQ-00-1822-U1
_____ (1) Hardware Package	SDHQ-00-1822-U1-HP
_____ (4) 3/8" - 16 x 1 & 1/4" Counter Sunk Bolts	
_____ (4) 3/8" S.S. Countersunk Washers	
_____ (4) 00-1822-P4 Mounting Pucks	
_____ (1) Tube of Blue Loctite	
_____ (1) SDHQ Built Billet 1.5" Tube Hook Kit	SDHQ-00-1811-U1-15C

Inspected and Packaged By: _____ **Date:** _____

For questions or help with the installation, please email help@sdhqoffroad.com
Store front hours: Mon. - Fri. 8:00am - 5:30pm and Sat. 9:00am - 2:00pm Arizona Time.

- (1) SDHQ Built Billet 1.5" Tube Hook Kit**
- _____ **(2) SDHQ Built Billet 1.5" Tube Hooks**
- _____ **(1) Hardware Package**
- _____ **(2) 3/8" - 16 x 1" Grade 8 Hex Bolts**
- _____ **(2) 3/8" Grade 8 Split Lock Washers**
- _____ **(4) 3/8" Grade 8 Washers**

SDHQ-00-1811-U1-15C
SDHQ-00-1811-U1-15C-A
SDHQ-00-1811-U1-HP



SDHQ Motorsports
 190 S McQueen Rd
 Ste 109 Gilbert, AZ 85233
 Phone: 480-633-2929

INSTALLATION INSTRUCTIONS

Product: SDHQ-00-1822-U1

Description: SDHQ Built Chase Rack Vertical Pro Eagle Jack Mounting Kit



<u>Parts List</u>	<u>Hardware List</u>	<u>Required Tools</u>
(1) Pro Eagle Jack Mount Plate SDHQ-00-1822-U1 (1) Hardware Package SDHQ-00-1822-U1-HP (1) SDHQ Built Billet 1.5" Tube Hooks SDHQ-00-1811-U1-15C	(4) 3/8" - 16 x 1 & 1/4" Counter Sunk Bolts (4) 3/8" S.S. Countersunk Washers (4) 00-1822-P4 Mounting Pucks (1) Tube of Blue Loctite	1/2" Socket Ratchet 1/2" Wrench Drill 7/16" Drill Bit Center Punch Deburring Tools

Tech Notes

Only works for 2 ton or 3 ton Pro Eagle Big Wheel Jacks

Pro Eagle Big Wheel 2.0 Jack Mount required for install, **sold separately.**

Drilling **IS** required into the Pro Eagle Jack Mounts

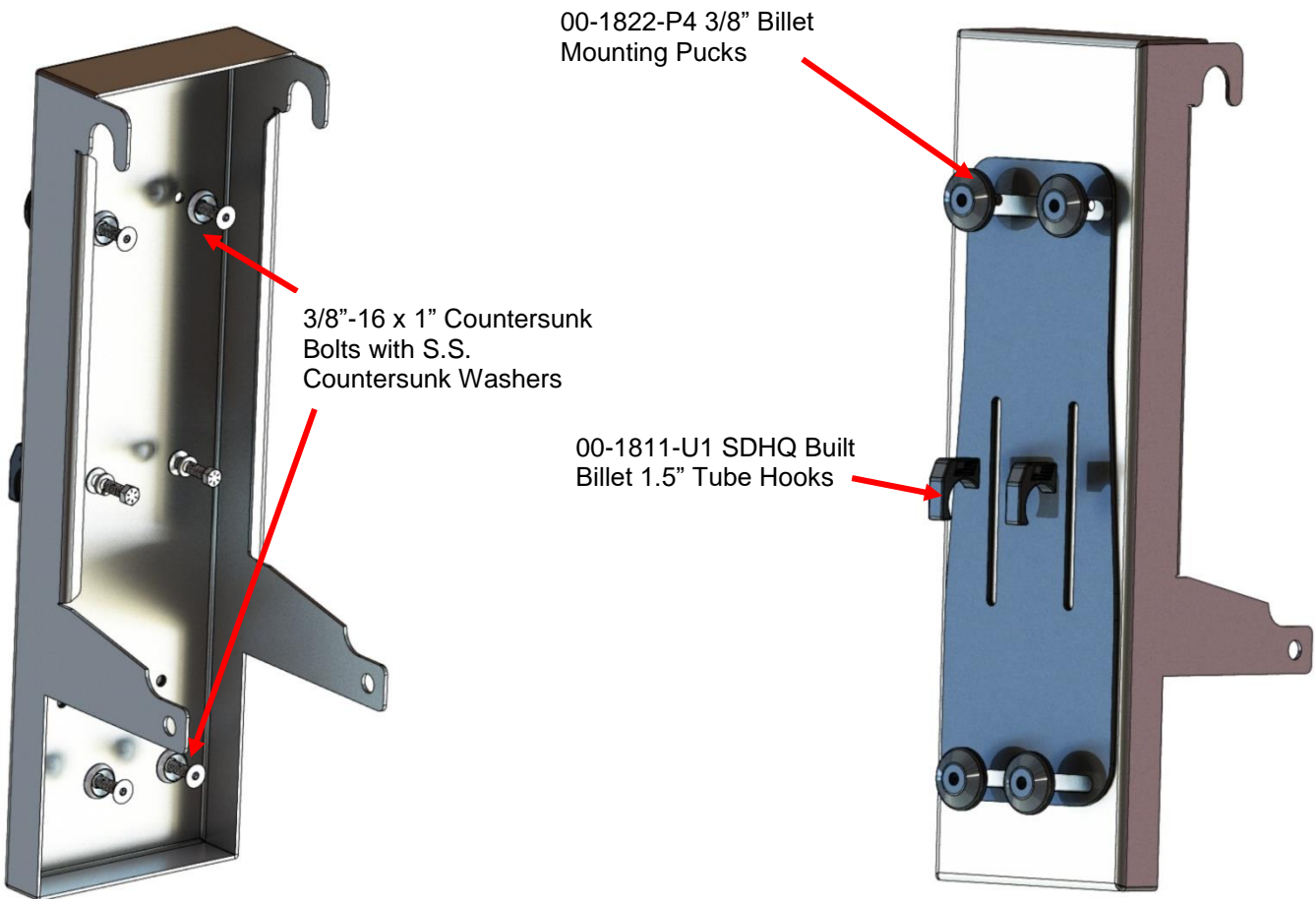
Drilling **MAY** be required depending on the build date of your SDHQ Chase Rack

Use Loctite on the final installation of all hardware

Approx. Install Time: 2 Hour (not including Chase Rack removal or drilling)

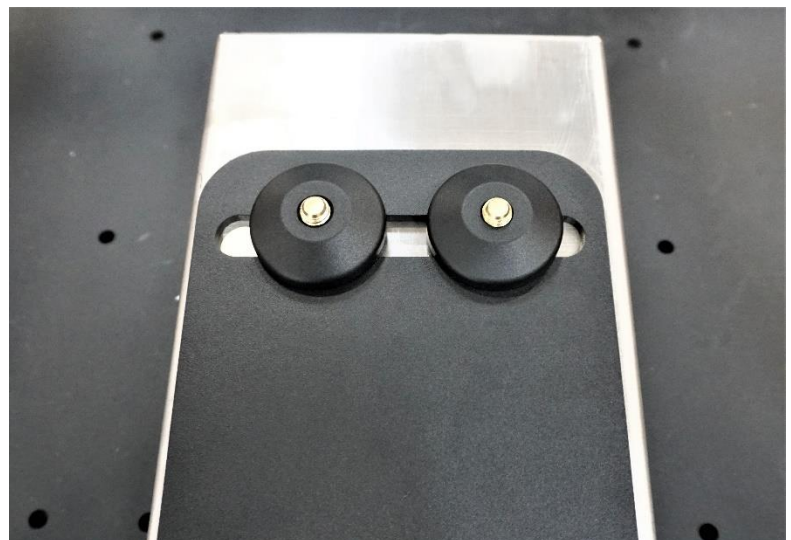
*****READ ALL INSTRUCTIONS THOROUGHLY FROM START TO FINISH BEFORE BEGINNING INSTALLATION!*****

For questions or help with the installation, please email help@sdhqoffroad.com
 Store front hours: Mon. – Fri. 8:00am – 5:30pm and Sat. 9:00am – 2:00pm Arizona Time.



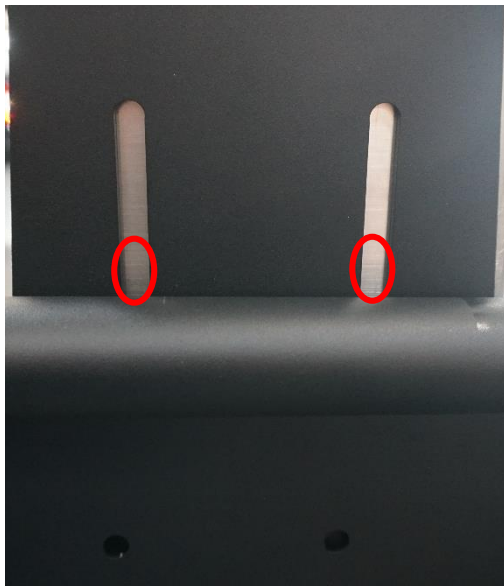
Installation Instructions:

1. Unbox your SDHQ Chase Rack Vertical Pro Eagle Jack Mount Kit and check over all parts. Familiarize yourself with the parts and diagrams. Also, unbox your Pro Eagle Jack Mount 2.0 and familiarize yourself with the contents.
2. Remove your Chase Rack if it is installed in your truck.
3. Mount the Pro Eagle Jack Mount to the SDHQ Plate using (2) of the aluminum pucks and 3/8"-16 hardware in the top slot using the existing holes in the Pro Eagle Mount. The 2 ton mount hardware will sit on the bottom edge of the slot and the 3 ton mount hardware will sit on the top edge of the slot. Once secured, place your Big Wheel jack into the mount and secure it using the retaining pin.

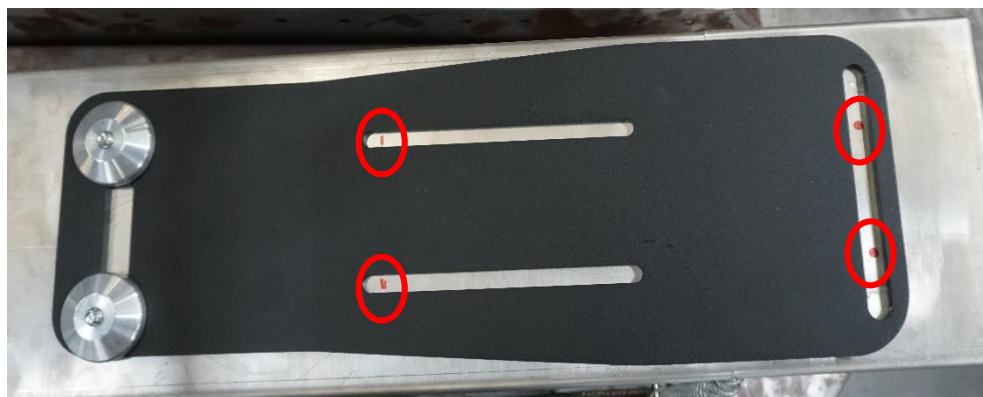


4. Take the assembly with the heavy end on the Main Plate and roll the jack upright towards the Front Plate of your SDHQ Chase Rack. You will be aiming to position the lower slot of the SDHQ Plate over the (2) premade holes as shown below. (**Note:** Not all SDHQ Chase Racks have been updated with the updated bolt patterns. See the end of Step 5 for additional instructions)

5. While holding the assembly upright and in the desired placement against the Chase Rack, use a permanent marker to mark the (4) needed holes on the Pro Eagle Jack Mount. Mark the vertical slots for the Billet Tube Hooks by placing the tube hook on the tube and mark approximately 1/4" from the top of the hook; mark through the lower (2) mounting holes on the Chase Rack while making sure you are marking through the lower slot of the SDHQ Jack Mount. **If you have a Chase Rack that has not been revised**, you will only mark the vertical slots **ON** the Chase Rack. Then, you will take the assembly off of the Chase Rack and mark (2) holes centered in the lower slot.



6. Disassemble everything and drill the (4) holes on your Pro Eagle Jack Mount. (**Note:** When drilling stainless steel Pro Eagle Jack Mount, drill bits will have a tendency to "walk" off of the center of your marked hole, it is recommended to drill your holes oversized to minimize the need to redrill)

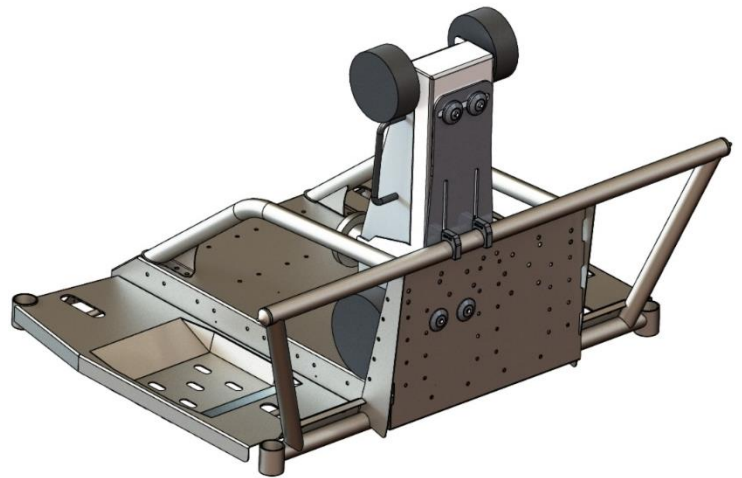


For questions or help with the installation, please email help@sdhqoffroad.com
Store front hours: Mon. – Fri. 8:00am – 5:30pm and Sat. 9:00am – 2:00pm Arizona Time.

7. Reassemble the mount and attach to your Chase Rack first using the Billet Tube Hooks, leave loose for now (**Note:** Some Chase Rack applications need a washer between the tube hook and Jack Mount). Use the remaining 3/8" hardware and billet pucks in the lower (2) holes. **If you have a Chase Rack that has not been revised**, tighten the tube hooks, mark the drilled holes from your jack mount onto the Chase Rack and drill the 3/8" holes. It is recommended to touch up the holes drilled into the Chase Rack with matte black spray paint to avoid future corrosion.



8. Tighten all hardware and install the remainder of the Pro Eagle parts before securing your jack back into the mount. Enjoy your SDHQ Built Chase Rack Vertical Pro Eagle Jack Mounting Kit!



Double check all hardware is installed correctly and tight

Re-torque ALL bolts after 100 miles



190 S McQueen Rd
Ste 109 Gilbert, AZ 85233

www.sdhqoffroad.com

Follow us on:



Facebook



Instagram

For questions or help with the installation, please email help@sdhqoffroad.com
Store front hours: Mon. – Fri. 8:00am – 5:30pm and Sat. 9:00am – 2:00pm Arizona Time.