



SDHQ Motorsports
190 S McQueen Rd
Ste 109 Gilbert, AZ 85233
www.SDHQoffroad.com

Product Packing List

Product: SDHQ-00-1212-B

Description: Universal Billet Chase Light Mount

_____ (1) Chase Light Mount	SDHQ-00-1212-A
_____ (1) Hardware Package	SDHQ-00-1212-HP
_____ (2) Jack Nuts	
_____ (1) Jack Nut Friction Wrench	
_____ (2) 1/4" - 20 x 1" S.S. Button Head Bolts	
_____ (2) 1/4" S.S. Flat Washers	
_____ (1) 1/4" - 20 x 1" Grade 8 Set up Hex Head Bolt	
_____ (1) 1/4" Grade 8 Set up Washer	

Inspected and Packaged By: _____ Date: _____

For questions or help with the installation, please email help@sdhqoffroad.com
Store front hours: Mon. - Fri. 8:00am - 5:30pm and Sat. 9:00am - 2:00pm Arizona Time.



SDHQ Motorsports
190 S McQueen Rd
Ste 109 Gilbert, AZ 85233
www.SDHQoffroad.com

INSTALLATION INSTRUCTIONS

Product: SDHQ-00-1212-B

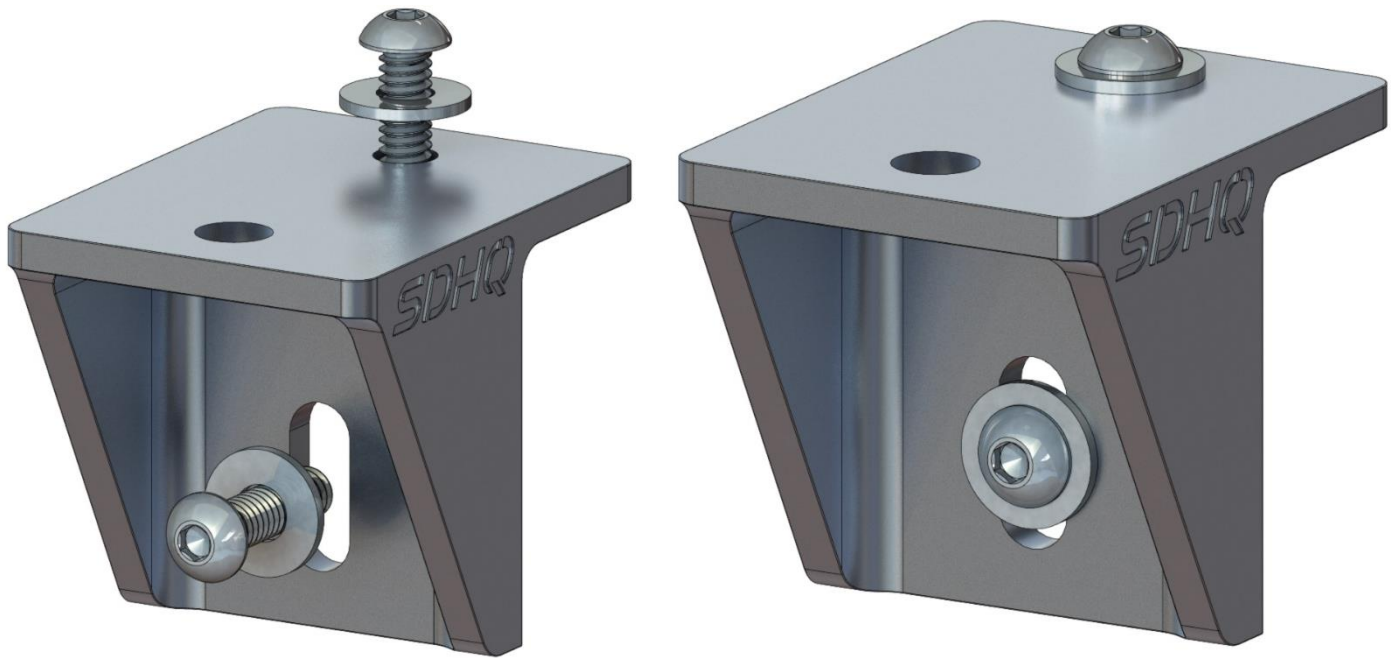
Description: Universal Billet Chase Light Mount



<u>Parts List</u>	<u>Hardware List</u>	<u>Required Tools</u>
(1) Chase Light Mount SDHQ-00-1212-A (1) Hardware Package SDHQ-00-1212-HP	(2) Jack Nuts (2) Jack Nut friction Wrench (2) 1/4"-20 x 1" S.S. Button Head Bolts (2) 1/4" S.S. Flat Washers (1) 1/4"-20 x 1" Set Up Bolt (1) 1/4" Set Up Washer	5/32" Allen Wrench 7/16" Wrench/Socket Drill 7/16" Drill Bit
<u>Tech Notes</u>		
Drilling is required for installation.		
Approx install time = 30min		

***READ ALL INSTRUCTIONS THOROUGHLY FROM START TO FINISH BEFORE BEGINNING INSTALLATION! ***

For questions or help with the installation, please email help@sdhqoffroad.com
Store front hours: Mon. – Fri. 8:00am – 5:30pm and Sat. 9:00am – 2:00pm Arizona Time.



Installation Instructions:

1. Find an appropriate location for your bracket to mount. Make sure there is nothing obstructing the view of your light from the rear of the vehicle. Place mount on the top corner of the front of your truck bed.



2. Mark the top and side holes on the bed. Drill a 7/16" hole where marked, and clean hole from any burrs.



For questions or help with the installation, please email help@sdhqoffroad.com
Store front hours: Mon. – Fri. 8:00am – 5:30pm and Sat. 9:00am – 2:00pm Arizona Time.

3. Use the supplied set up bolt and run it through the set up washer, friction wrench, and jack nut. Place the jack nut in the drill hole, while holding the friction wrench, tighten the set up bolt until the jack nut seats. Duplicate this set up for the second hole.



4. Mount the chase light bracket so the flat plate is on top, and the 2 holes together are facing the rear. Use the (2) 1/4"-20 x 1" stainless steel button head bolts and washer to mount, use the anti-seize on all stainless hardware.



5. Use the appropriate hole for the light you are using. Mount and wire up your light.



Double check all hardware is installed correctly and tight

Re-torque ALL bolts after 100 miles



190 S McQueen Rd
Ste 109 Gilbert, AZ 85233
www.sdhqoffroad.com

Follow us on:



Facebook



Instagram

For questions or help with the installation, please email help@sdhqoffroad.com
Store front hours: Mon. – Fri. 8:00am – 5:30pm and Sat. 9:00am – 2:00pm Arizona Time.