



SDHQ Motorsports
190 S McQueen Rd
Ste 109 Gilbert, AZ 85233
www.SDHQoffroad.com

Product Packing List

Product: SDHQ-00-1202-S2

Description: SDHQ Built Universal Behind the Grill S2
Mount

_____ (2) S2 Mount

SDHQ-00-1202-S2-A

_____ (1) Hardware Package

SDHQ-00-1202-S2-HP

_____ (4) 1/4"-20 x 3/4" S.S Button Head Bolt

_____ (4) 1/4"-20 S.S. Nylon Lock Nut

_____ (8) 1/4" S.S. Washer

Inspected and Packaged By: _____ Date: _____



SDHQ Motorsports
190 S McQueen Rd
Ste 109 Gilbert, AZ 85233
www.SDHQoffroad.com

INSTALLATION INSTRUCTIONS

Product: SDHQ-00-1202-S2

Description: SDHQ Built Universal Behind the Grill S2 Mount



| Parts List | Hardware List | Required Tools |
|--|---|--|
| (2) SDHQ S2 Mount SDHQ-00-1202-S2-A (1) Hardware Package SDHQ-00-1202-S2-HP | (4) 1/4"-20 x 3/4" S.S. Button Head Bolt (4) 1/4"-20 S.S. Nylon Lock Nut (8) 1/4" S.S. Washer | 7/16" and 9/16" Wrench 5/32" Hex Key 9/16" Socket Ratchet |

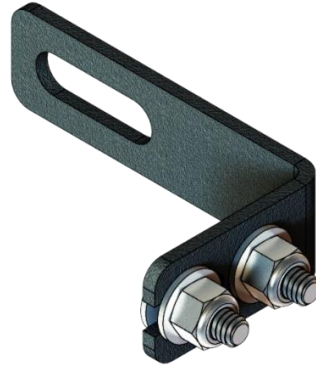
Tech Notes

Approx. Install Time: 20 Minutes (Not including wiring)

READ ALL INSTRUCTIONS THOROUGHLY FROM START TO FINISH BEFORE BEGINNING INSTALLATION!

For questions or help with the installation, please email help@sdhqoffroad.com
Store front hours: Mon. – Fri. 8:00am – 5:30pm and Sat. 9:00am – 2:00pm Arizona Time.

SDHQ-00-1202-S2



Installation Instructions:

1. Un-box your SDHQ Built Universal Behind the Grill S2 Mount and lay out the parts. Verify all parts are present and familiarize yourself with all the parts.
2. Open your Baja Designs S2 Lights and install the supplied bracket onto the light as shown below. Be sure to install the 3/8" bolt through the bracket before placing on the light as it cannot be installed after.



3. Install the 3/8" hardware provided with the Baja designs S2 through the slot in on the SDHQ S2 Mount.



4. Install the S2 Mount onto the desired slot of a Behind the Grill mount using the supplied hardware. There is a spacing of 1.9" from the front of the light to the rear mounting hole of the bracket to ensure proper fitment recommended to install into a Behind the grill with slots that are horizontal and are a length of at least 1.9" in depth.



5. Locate the light in the desired position and tighten all of the bolts. Complete wiring for the light.
6. Enjoy your new SDHQ Built Behind the Grill S2 Mount.

*****Double check all hardware is installed correctly and tight*****

*****Re-torque ALL bolts after 100 miles*****



190 S McQueen Rd
Ste 109 Gilbert, AZ 85233
www.sdhqoffroad.com

Follow us on:



Facebook



Instagram

For questions or help with the installation, please email help@sdhqoffroad.com
Store front hours: Mon. – Fri. 8:00am – 5:30pm and Sat. 9:00am – 2:00pm Arizona Time.