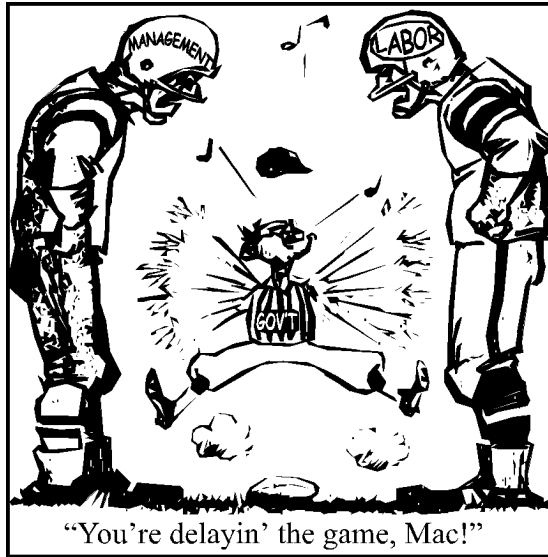


# Intermediate American History Sample Exam

Name: \_\_\_\_\_

1)

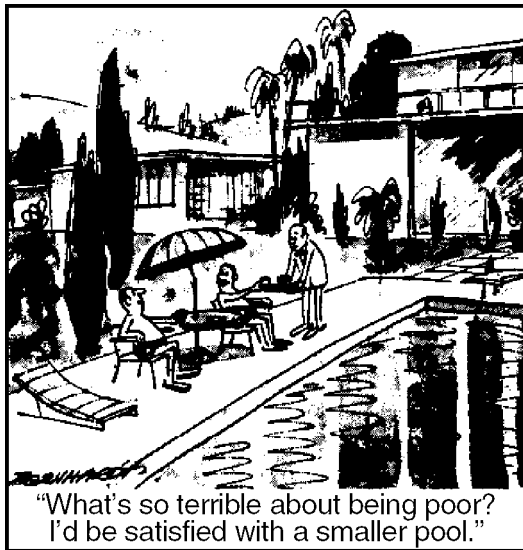


SOURCE: Stevens, *San Diego Union*

According to the cartoon, what was the attitude of labor and management toward the role of government?

- A) Government was taking the side of management against labor.
- B) Government was a victim of labor and management.
- C) Government was changing the rules of the game.
- D) Government was interfering with labor and management.

2)

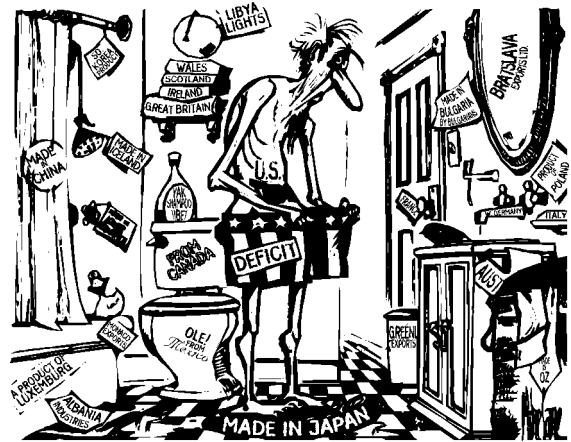


SOURCE: Bernhard, *The Christian Science Monitor*

What was the cartoonist criticizing in the cartoon?

- A) economic inequality
- B) taxes
- C) servants
- D) international trade

3)

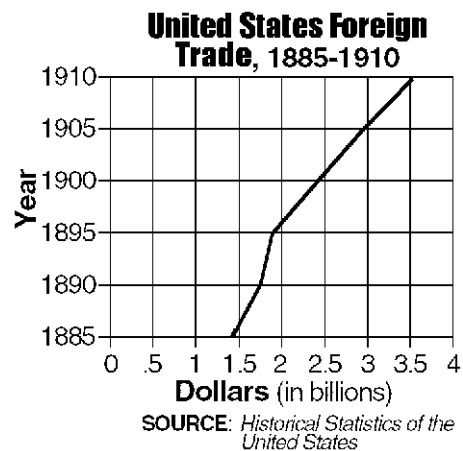


SOURCE: Mike Lane

Which of the following would do the most to help the situation illustrated in the cartoon?

- A) a decrease in import taxes
  - B) an increase in the amount of foreign-made goods purchased by Americans
  - C) an increase in the amount of American-made products sold in other countries
  - D) an amendment to place an export tax on all American-made goods
- 4) Social Darwinism proposed a theory which stated that
- A) taxes should be used to support social programs
  - B) government should not interfere in the struggle for economic survival
  - C) social equality must be extended to minorities
  - D) the rich must contribute to helping the poor

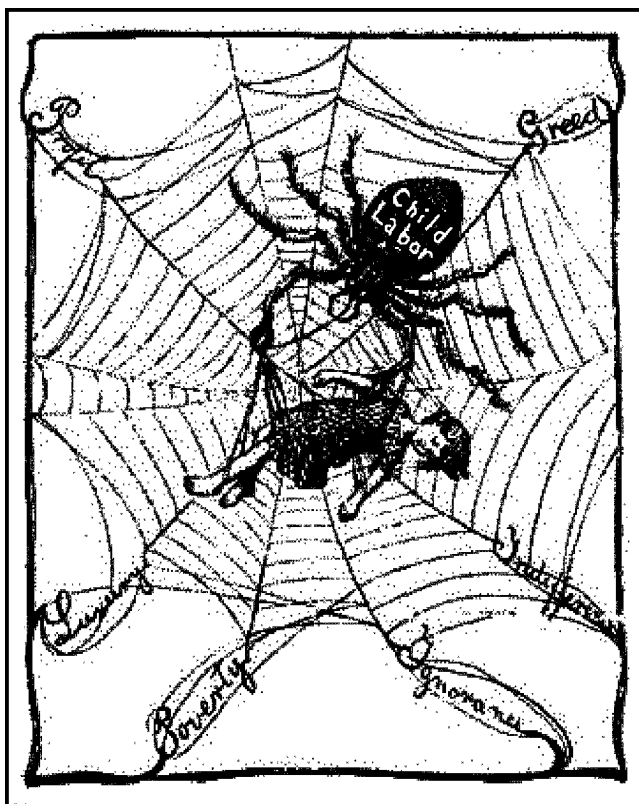
5)



According to the graph, what conclusion can be made about foreign trade between 1885 and 1910?

- A) The United States encouraged industrial growth in other countries.
- B) The United States exported more than it imported.
- C) United States foreign trade increased.
- D) Trade tariffs decreased the prices of goods.

6)



According to the cartoonist, what resulted from human greed, indifference (not caring), ignorance (not knowing), poverty, and desire for luxury and profit?

- A) increased numbers of women working in industry
- B) growth of monopolies and trusts
- C) huge improvements in the American education system
- D) increased numbers of child laborers

7)



This political cartoon *best* illustrates the concept of

- A) imperialism
- B) communism
- C) secession
- D) Prohibition