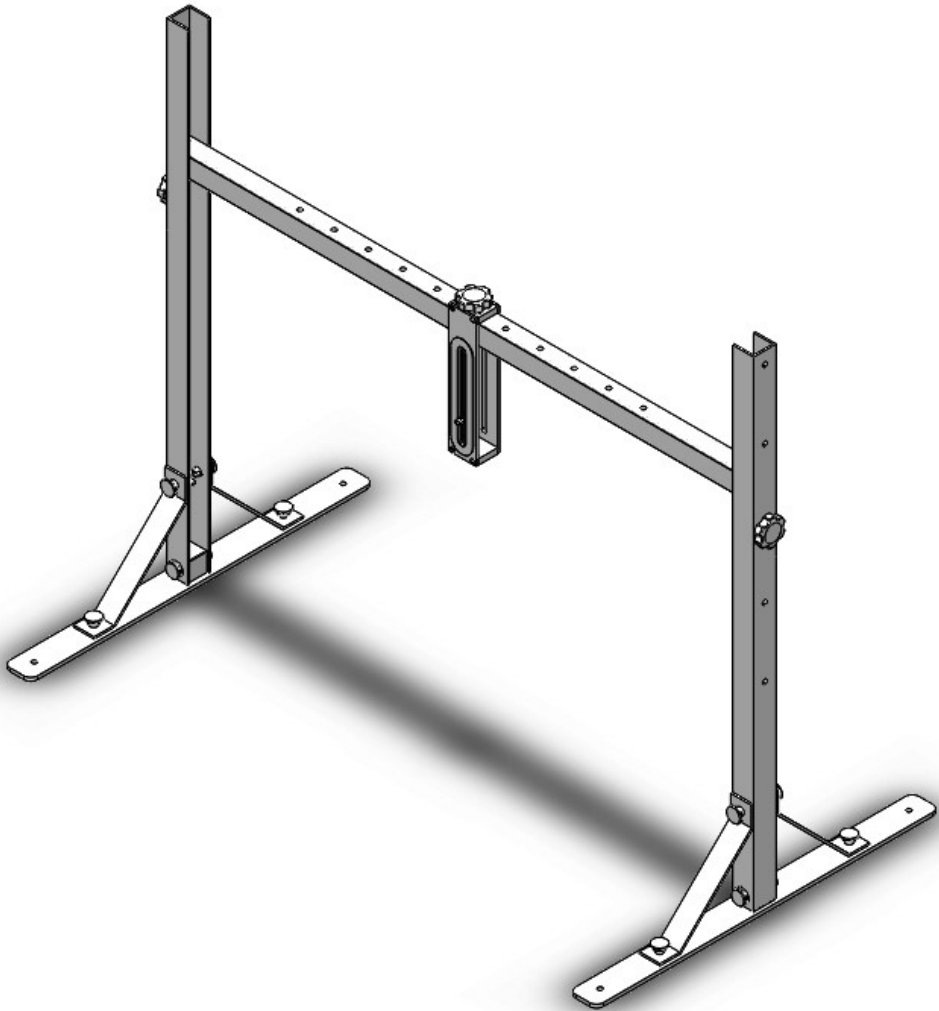




# Overhead Camera Platform

## USER MANUAL



The Overhead Camera Platform by Glide Gear is the ideal tool to shoot overhead pictures or videos and can also be used as a tabletop studio.

Use the Overhead Camera Platform for photography applications such as:

- Photography of small objects such as jewelry or electronics.
- Photography typically requiring a complete vertical angle such as food pictures.

The Overhead Camera Platform is also ideal for videos where having your hands free is important such as in:

- An assembly video.
- An unboxing video.
- A tutorial video.
- A cooking video.

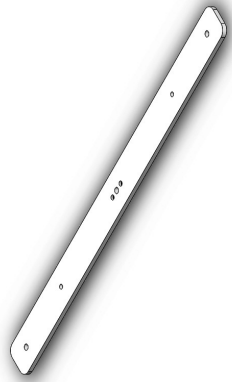
The Overhead Camera Platform:

- Can accommodate most DSLR and most lenses thanks to its vertical adjustment ranging from 15cm/6" to 50cm/20".
- Is quick and easy to assemble for a permanent setup or on the go.
- Can be used as a tabletop studio thanks to its brackets that can hold a background (not pictured in the picture on the left)

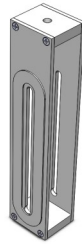
For more information please visit our website: [www.glidegear.net](http://www.glidegear.net)



# What's included?



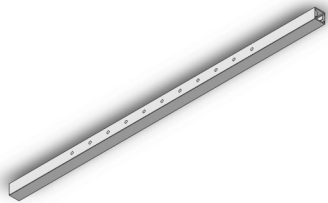
A-Foot (x2)



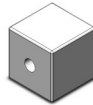
E- Camera holder



K-M5 short thumb-screw (x4)



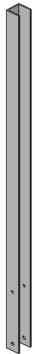
B-Crossbar



F- Foot joint (x2)



L-Camera holder thumb screw



C-Side Bar



G-Foot Thumbscrew 1/4-20 (x6)



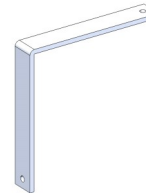
M-Height adjustment Thumbscrew (x2)



D-Support Beam (x4)



H-Foot M5 screw (x4)



N- Backdrop L-bracket (x2)



I-M5 Wingnut (x4)



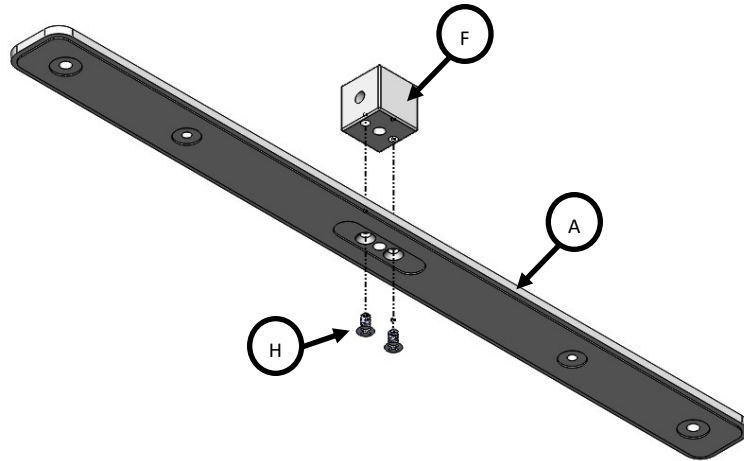
J-M5 long thumb-screw (x4)



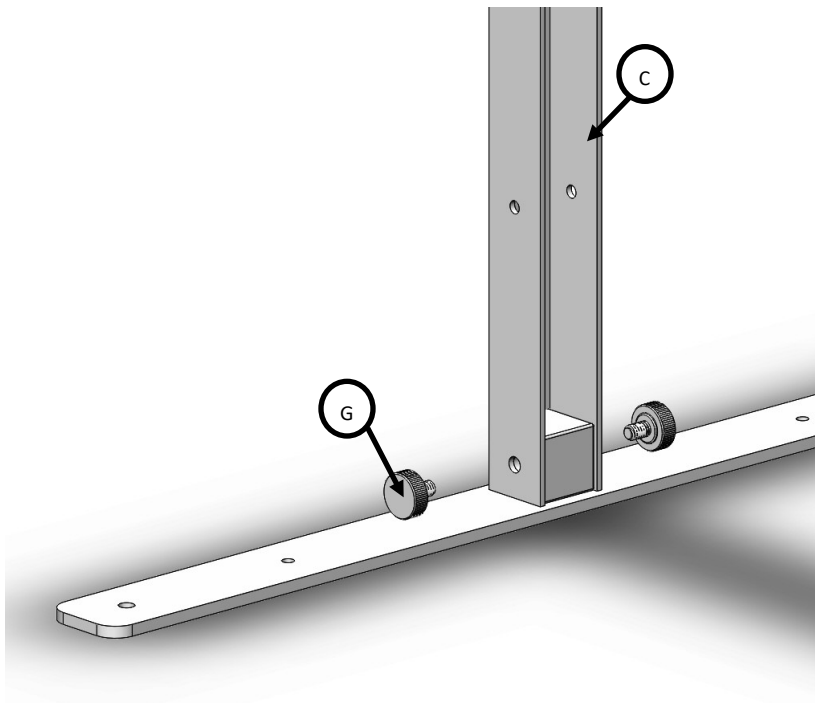
O- Backdrop Metal Clip (x2)



# Assembly



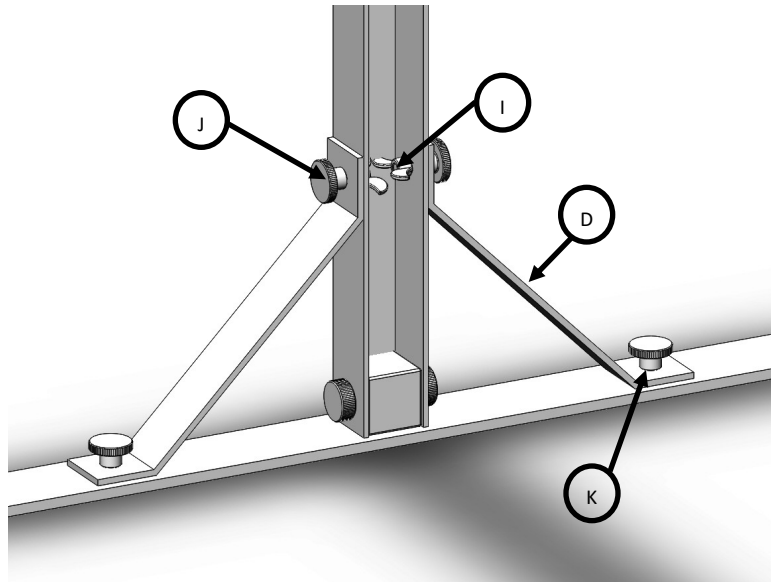
- 1 Mount the 2 foot joints (F) on the 2 feet (A) using 2 flat head foot M5 screws (H) for each joint.  
The foot joint goes on the side of the foot, which has no rubber covering.



- 2 Slide the Side Bar (C) onto the foot joint (F).  
Lock the Side Bar (C) to the foot using 2 of the 1/4-20 Foot thumbscrew (G)  
Repeat Step 1 and Step 2 for the 2 feet.



# Assembly, Cont'd

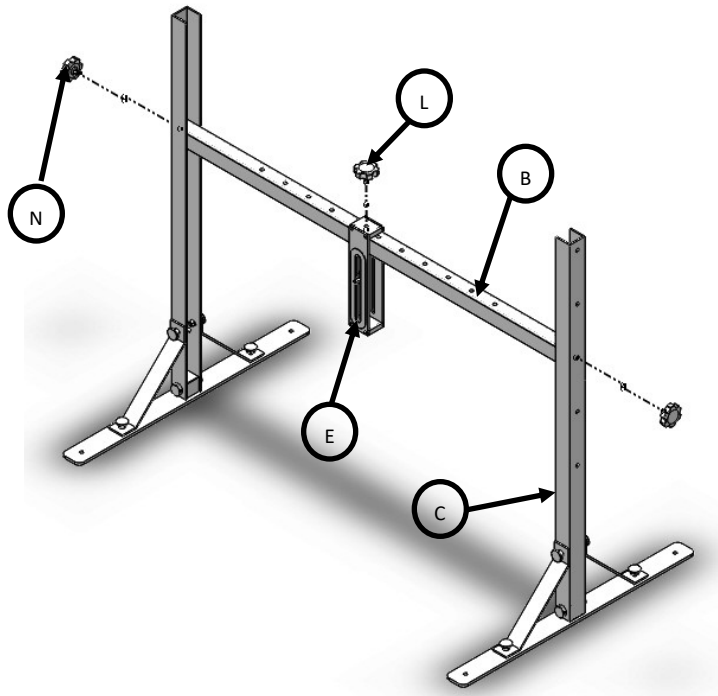


3

Assemble the Support Beam (D) on the Side Bar (C) using the long M5 thumb screw ( J ) and the wing nuts ( I ).

Assemble the Support Beam (D) on the foot (A) using the short M5 thumbscrew ( K ).

Repeat this step for the other Support Beam (D).



4

Slide the Camera Holder (E) onto the Cross Bar (B).

The Camera Holder can be locked into position using the Camera Holder Thumb Screw (L).

Adjust the height of the Cross Bar (B) by sliding it along the Side Bar (C) and locking it into position using the 2 Height Adjustment Thumbscrew (M).



# Tabletop Studio Setup



Also included in the Overhead Camera Platform package are:

- 2 x L-brackets (N)
- 2 x 1/4-20 thumbscrews (G)
- 2 x metal clips (O)

They can be used to turn the Overhead Camera Platform into a tabletop studio. To do so, follow the steps below:

- 1 Mount the 2 L-brackets (N) using the 2 1/4-20 thumb screws (G) onto the cross bar.
- 2 Clamp your backdrop to the brackets using the 2 metal clips (O).

The backdrop is not included with the Overhead Camera Platform.

For more information please visit our website: [www.glidegear.net](http://www.glidegear.net)