



TARVOS Series

Weather-Resistant Surface Mount Loudspeaker

TARVOS-4 (4.5") / TARVOS-65 (6.5") / TARVOS-8 (8")

PRODUCT MANUAL



Sound Town Inc.

Los Angeles, California, USA

www.soundtown.com

IMPORTANT SAFETY INSTRUCTIONS

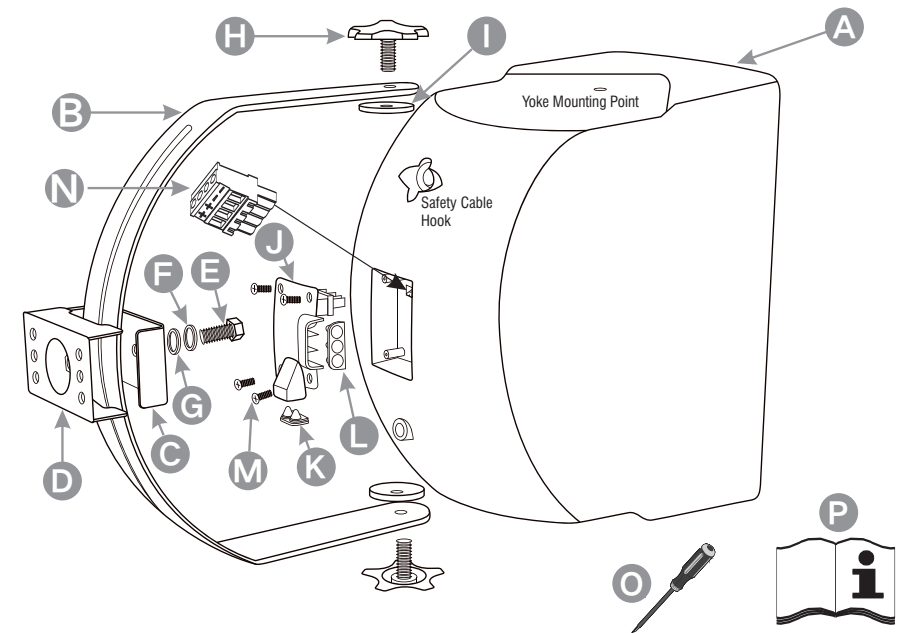
1. Read all safety and operating instructions before using this product.
2. All safety and operating instructions should be kept for future reference.
3. Read and understand all warnings listed on the operating instructions.
4. Follow all operating instructions to operate this product.
5. Only use dry cloth to clean this product.
6. Do not block any ventilation openings, it should not be placed flat against a wall or placed in a built-in enclosure that will impede the flow of cooling air.
7. Do not install this product near any heat sources, such as, radiators, heat registers, stove or other apparatus (including heat producing amplifiers) that produce heat.
8. Only use attachments specified by the manufacturer.
9. Unplug this apparatus during lightning storms or when unused for long periods of time.
10. Refer all servicing to qualified service personnel. Servicing is required when the apparatus has been damaged in any way.
11. Correct disposal of this product: This symbol indicates that this product must not be disposed of with house-hold waste, according to the national law. This product should be take to a collection center licensed for the recycling of waste electrical and electronic equipment. The mishandling of this type of waste could have a possible negative impact on the environment and human health due to potentially hazardous substances. At the same time, your cooperation in the correct disposal of this product will contribute to the efficient use natural resources. For more information about where you can take your waste equipment for recycling, please contact your local city office, or your household waste collection service.



FEATURES & APPLICATIONS

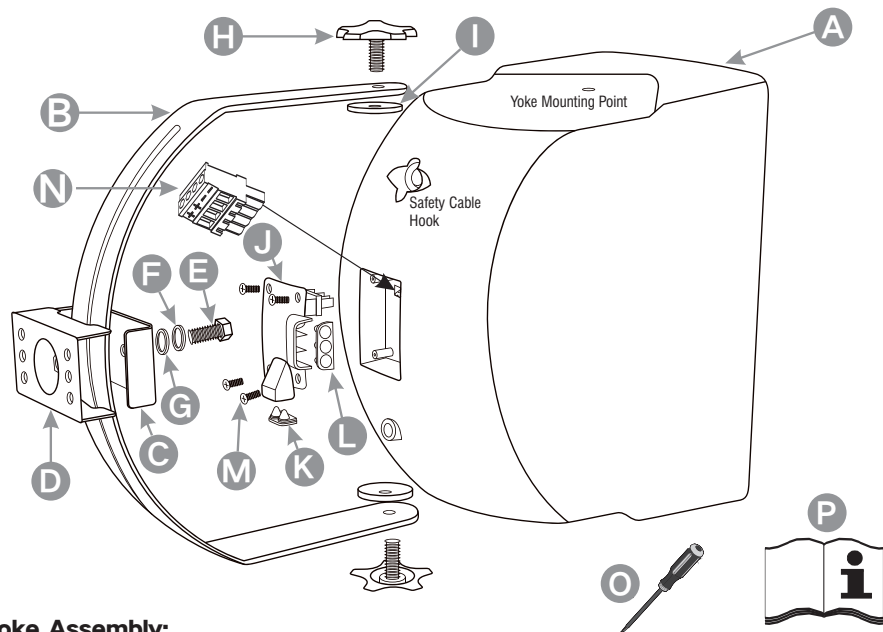
- **SUPERB SOUND:** Each speaker comes with customized high-performance coaxial speaker, delivering top-notch sound and wide coverage.
- **WEATHER-RESISTANT:** IP56 standard enclosure with water-proof input cover make it perfect for outdoor installations and high-humidity environments.
- **INCLUDES STEP-DOWN TRANSFORMER:** Can be used in either 8ohm or 70V / 100V voltage speaker configurations with built-in step-down transformer and taps.
- **VERSATILE INSTALLATION ACCESSORIES:** Included Yoke mount bracket, the speaker can be surface-mounted horizontally or vertically with adjustable angle.
- Ideal for indoor & outdoor, residential or commercial applications.

In the package



ITEM	QTY	DESCRIPTION
A	2	Surface Mount Loudspeakers
B	2	Yoke Arm
C	2	Yoke Mounting Pinch Plate
D	2	Wall-Mounting Plate
E	2	M8 x 25mm Bolt
F	2	8mm Lock Washer
G	2	8mm Flat Washer
H	4	Yoke Knob
I	4	Rubber Yoke Washer
J	2	Input Cover
K	4	Vertical 2-Position Rubber Plug
L	4	Horizontal 3-Position Rubber Plug
M	8	M3 x 13mm Philips Screw
N	2	4-Pin Euroblock Terminal Connector
O	1	Flat Screwdriver
P	1	User Manual

Installation



Yoke Assembly:

1. Attach 'Wall-Mount Plate' (D) to mounting surface. (Sound Town does not provide the hardware for mounting the plate to the install surface. Please use proper hardware subject to the local codes and requirements.)
2. Pre-load the M8 x 25mm bolt (E), 8mm Lock Washer (F), and 8mm Flat Washer (G) through the hole on the Yoke Mounting Pinch Plate (C).
3. Position the Pinch Plate / Bolt Assembly through slot on the Yoke Arm (B).
4. Position the yoke assembly to the Wall-Mount Plate (D), ensuring the yoke arm rests squarely inside the notches on the Wall-Mount Plate. Lightly finger-tighten the M8 bolt (E) to loosely hold the yoke assembly together. (Do not tighten the yoke bolt until final aiming is complete.)
5. Prior to lifting the loudspeaker into place, proceed to 'Wiring Instruction' and complete the wiring preparation.

Wiring Instruction:

The provided 4-Pin Euroblock connector, required to wire the loudspeaker, allows for individual unit wiring or 'loop-thru' wiring for connecting multiple loudspeakers in parallel. The provided 'Input Cover' (J) allows for multiple pairs of wires in and out of the sealed ingress. To meet the IP56 standard, it's important to determine the correct mounting direction. For either horizontal or vertical mounting, always have the wires exiting toward the ground. This is to help prevent water ingress into the wiring cavity. The provided 'Rubber Plugs' (K) & (L) are designed to grip cables from approx. 0.125" to 0.3" in diameter to prevent water ingress.

1. Leave approx. 6" of cable coming out of the wall at the install point.

Installation

2. Prepare the rubber plugs (Using the 3-Position rubber cover (L) for horizontal mounting and 2-Position rubber cover (K) for vertical mounting) by clipping the end of the rubber come to create an opening slightly smaller than the diameter of the cable. This will allow the rubber to stretch slightly and seal around the cable jacket. A sharp razor blade or wire cutters can be used to cut the cone tip. (see figure 1)
3. Split the cable jacket approx. 1". (see figure 1)
4. Route the cables through their respective cones in the rubber plug. (see figure 1)
5. Strip each conductor insulation back approx 0.25". (see figure 1)
6. Connect the (+) wire to position #1 and the (-) wire to position #4 on the Euroblock connector. (see figure 2)
If the next loudspeaker is to be connected in daisy-chain, connect its wires to position #2 (+) and #3 (-) (see figure 3)

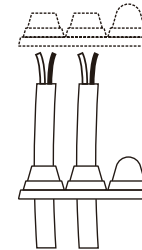


Figure 1

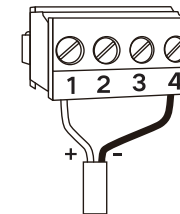


Figure 2
(Single Unit Wiring)

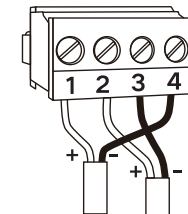


Figure 3
(Loop-Thru Parallel Wiring)

7. Lift the loudspeaker up to the installation location, position the cabinet into its final position.
8. Press both the 2-Position and 3-Position rubber plugs (K) & (L) into position on the weather cover ingress.
9. Proceed to connect the 4-Pin Euroblock connector into the receptacle of the rear of the cabinet.
10. Maintaining cabinet orientation, use the 4 M3x13 screws (M) to secure the Input Cover (J) to the back of the cabinet.
11. Attach the loudspeaker (A) to the yoke assembly using the supplied Yoke Knobs (H) and Yoke Washers (I).
12. Refer to 'Aiming Instruction' for final aiming procedures.

Aiming Instruction:

1. Supporting the weight of the cabinet, gently rotate the yoke through the yoke Mounting Plate / Pinch Plate assembly until the desired aiming angle is achieved.
2. Once in position, use an open-ended wrench and tighten the yoke bolt firmly to lock the yoke into position.
3. Loosen the two loudspeaker yoke knobs and rotate the loudspeaker until the desired aiming angle is achieved.
4. Once in position, re-tighten the loudspeaker yoke knobs by hand to secure the loudspeaker.
5. A safety cable hook is built into the rear of the loudspeaker cabinet. Always use a safety cable! The safety cable must be connected directly to the loudspeaker cabinet and terminated at a secondary mounting point.

Installation

Adjusting the Tap-Position Switch:

1. Using the provided Flat Screwdriver (O), carefully pry the logo plate away from the loudspeaker grill.
2. Referencing the Tap Position Switch label behind the logo, use the Flat Screwdriver (O) to adjust the verify the correct setting for the system. (see figure 4). You can make any of five different settings, although the dial has dual calibrations so at first glance it appears to have ten settings. The 8Ω position is the same on both sides and is for a low impedance connection.
3. Taking note of the cabinet orientation, re-install the logo plate into position so it is legible.

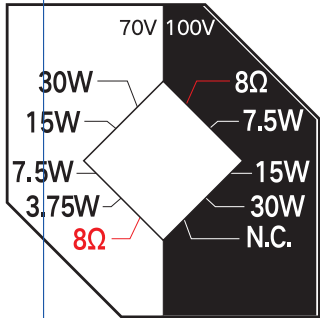


Figure 4

Specifications

MODEL	TARVOS-4	TARVOS-65	TARVOS-8
Type	Full-range	Full-range	Full-range
Freq. Range	70~18kHz	65~18kHz	50~18kHz
LF Driver	1 x 4.5"	1 x 6.5"	1 x 8"
HF Driver	1 x 1" (coaxial)	1 x 1" (coaxial)	1 x 1" (coaxial)
Dispersion	120° Conical	120° Conical	120° Conical
Nominal Impedance	8Ω	8Ω	8Ω
Power RMS/Program (8Ω)	50W / 100W	60W / 120W	80W / 160W
Available 70V Taps (watts)	30W, 15W, 7.5W, 3.75W	30W, 15W, 7.5W, 3.75W	30W, 15W, 7.5W, 3.75W
Available 100V Taps (watts)	30W, 15W, 7.5W	30W, 15W, 7.5W	30W, 15W, 7.5W
Sensitivity	91dB	92dB	93dB
Connector	4-Pin Euroblock (Parallel)		
Enclosure Finish	Matte finish ABS, available in black or white		
Environmental	IP55 rated loudspeaker, IP56 rated connector cover		
Height	6.4" (162mm)	7" (177mm)	9.7" (162mm)
Width	9.6" (243mm)	11.8" (243mm)	13.8" (243mm)
Depth	6.5" (164mm)	10.7" (164mm)	12.4" (164mm)

How can we help you?

CONTACT OUR US-BASED SUPPORT TEAM

Simple or complex, your questions are important to us. For service, support or more information, please contact the Sound Town support team:

Email: support@soundtown.com