

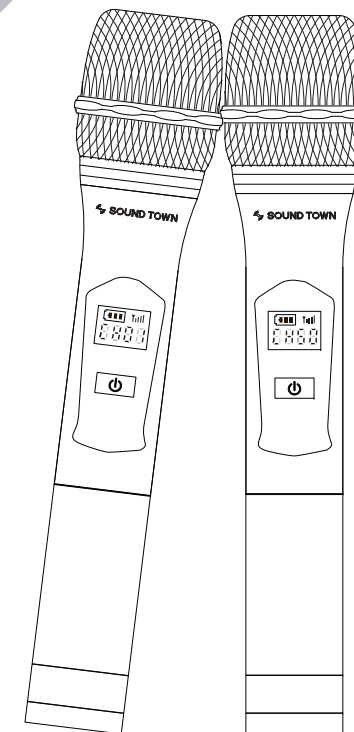
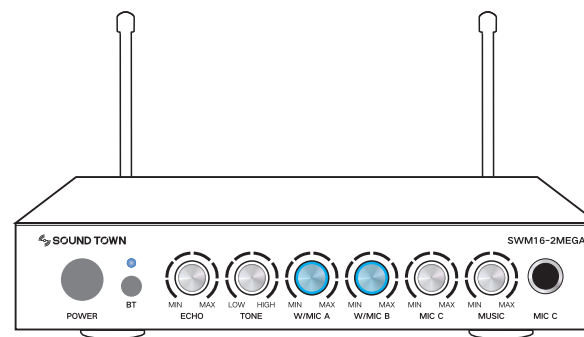
WIRELESS MICROPHONE KARAOKE MIXER SYSTEM

SWM16-2MEGA

 **SOUND TOWN**

SWM16-2MEGA PRODUCT MANUAL

 **SOUND TOWN**



FEATURES

TWO IN ONE: the wireless microphone receiver is also a sound mixer which is equipped with rotatory adjustment controls which allow you to easily adjust echo, tone, volume of the mics and music to the desired level.

INTERFERENCE FREE: the wireless microphone system comes with Ultra-High Frequency (UHF) which is less likely subject to interference from other equipment. It has 2 x 50 selectable frequencies and is compliant with the latest FCC regulations.

FLEXIBLE CONNECTING OPTIONS: the receiver comes with 3.5mm (1/8") TRS input, Optical / Toslink input & output, 3.5mm (1/8") TRS and 6.35mm (1/4") TRS output connectors, better yet, it supports bluetooth connection which make the set up a breeze with your home theater or speaker system.

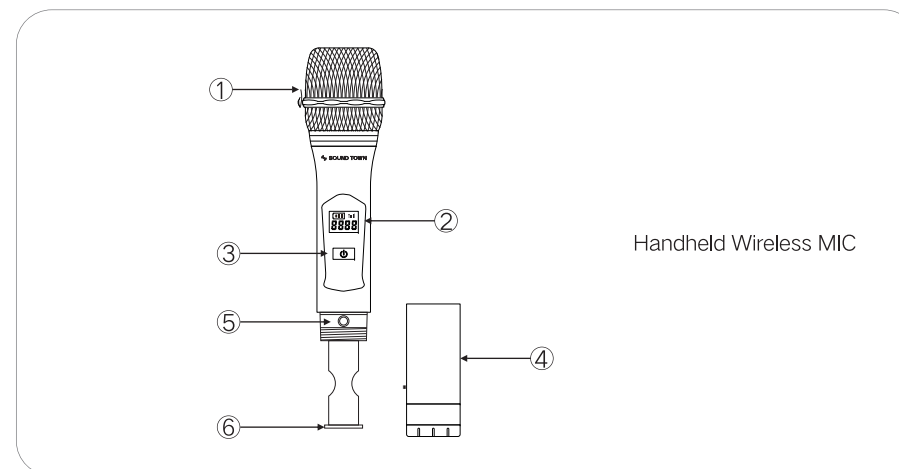
VERSATILE COMPATIBILITY: it works with an array of devices including TV, smart TV, Blue-Ray player, notebook, iPad, tablet, home theater, receiver, speaker and etc.

SUPERB SOUND QUALITY: built-in pop filter reduces potential popping sound and helps deliver consistent and superb sound.

LONG RANGE OPERATION RANGE: up to 100 feet line-of-sight operation range. Perfect for karaoke, DJ music and house party.

TRANSMITTER

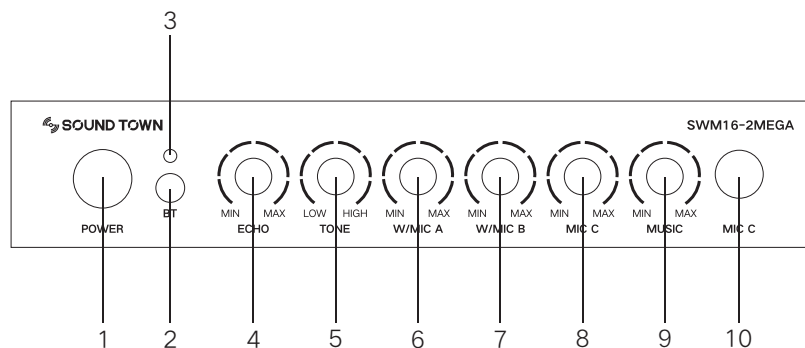
Transmitter



- ① Windscreen and pop filter
- ② Display
- ③ Power switch
- ④ Battery cover
- ⑤ Frequency adjustment
- ⑥ Transmission antenna

RECEIVER

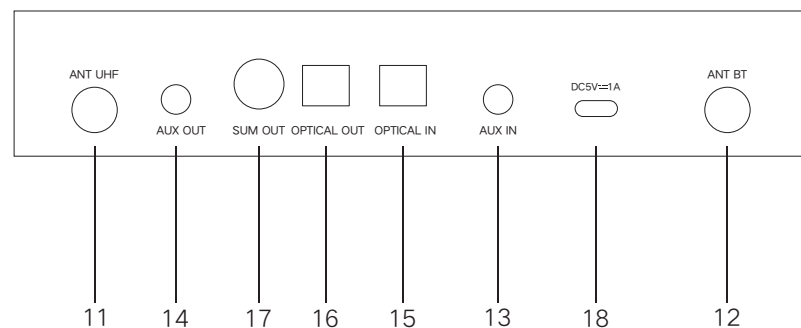
Front Panel



Front Panel

- 1. Power Switch:** Press to switch the unit power to ON and OFF. The indicator on the knob will be illuminated when the receiver is powered ON.
- 2. BT Switch:** To turn on/off the bluetooth.
- 3. Bluetooth indicator:** Powered on the receiver and press the BT switch, the receiver will become discoverable as SWM16-2MEGA. In the settings of your Bluetooth enabled devices, set it to "discover". From the Bluetooth device list, select the "SWM16-2MEGA" device and the indicator will flash fast during the pairing process. When bluetooth connection success the indicator will be always on. When bluetooth is playing the indicator will blink slowly.
- 4. ECHO:** Rotate the knob to adjust the echo to your desired level.
- 5. TONE:** This control is used to adjust the bass, treble quality of the sound. The bass is decreased and treble is increased when the control turned clockwise. The bass is increased and the treble is decreased when the control turned counter clockwise.
- 6. W/MIC A:** Rotate to adjust volume of wireless microphone A. The indicator on the knob will be illuminated when wireless microphone A is on.
- 7. W/MIC B:** Rotate to adjust volume of wireless microphone B. The indicator on the knob will be illuminated when wireless microphone B is on.
- 8. MIC C:** Rotate to adjust volume of wired dynamic MIC C.
- 9. MUSIC:** Rotate to adjust volume of the audio source such as computer, iPad, mobile phone etc.
- 10. MIC C:** Insert the 1/4" jack plug of the wired dynamic MIC here.

Rear Panel



Rear Panel

- 11. ANT UHF:** UHF receiving antenna of the wireless microphone.
- 12. ANT BT:** Bluetooth receiving antenna.
- 13. AUX IN:** Connect this 1/8" jack to an audio source with phone out such as PC, tablet, mobile phone etc.
- 14. AUX OUT:** Connect this 1/8" TRS jack to the INPUT of your amplifier or active speaker. (Mixed output for audio source and microphone signal.)
- 15. OPTICAL IN:** Connect this Optical (Toslink) input to an audio source with Optical (Toslink) output such as TV, PC etc.
- 16. OPTICAL OUT:** Connect this Optical (Toslink) output to the INPUT of your TV, receiver or active speaker.
- 17. SUM OUT:** Connect this 1/4" TRS jack to the INPUT of your amplifier or active speaker. (Mixed output for audio source and microphone signal.)
- 18. DC IN jack:** Connect the provided AC / DC adapter to this Type-C jack. (DC5V)

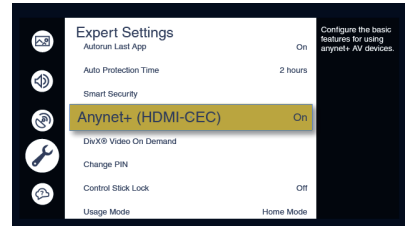
OPERATION

- 1) Connect the receiver to a power outlet through the power adapter provided and turn on the receiver.
- 2) Put two alkaline AA batteries into the battery compartment of the microphone. Please ensure the positive and negative ends are positioned in the correct direction.
- 3) Power on the handheld microphone. In case of any frequency interference, open the battery cover and press the set button inside to switch frequency channel. There are up to 50 frequencies to choose from.
- 4) Please note that it will take a few seconds for the receiver to automatically syndicate the frequency with the microphone each time the set button is pressed.
- 5) To connect the receiver to a device such as a TV, speaker, soundbar etc., please refer to the connection diagram below.

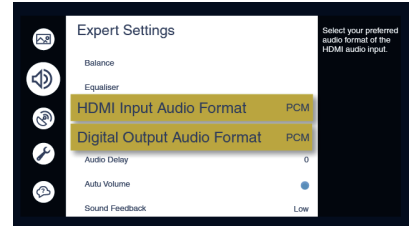
CONNECT TV via OPTICAL / TOSLINK

IMPORTANT:

Please change the audio formats on your TV to 'PCM' mode first



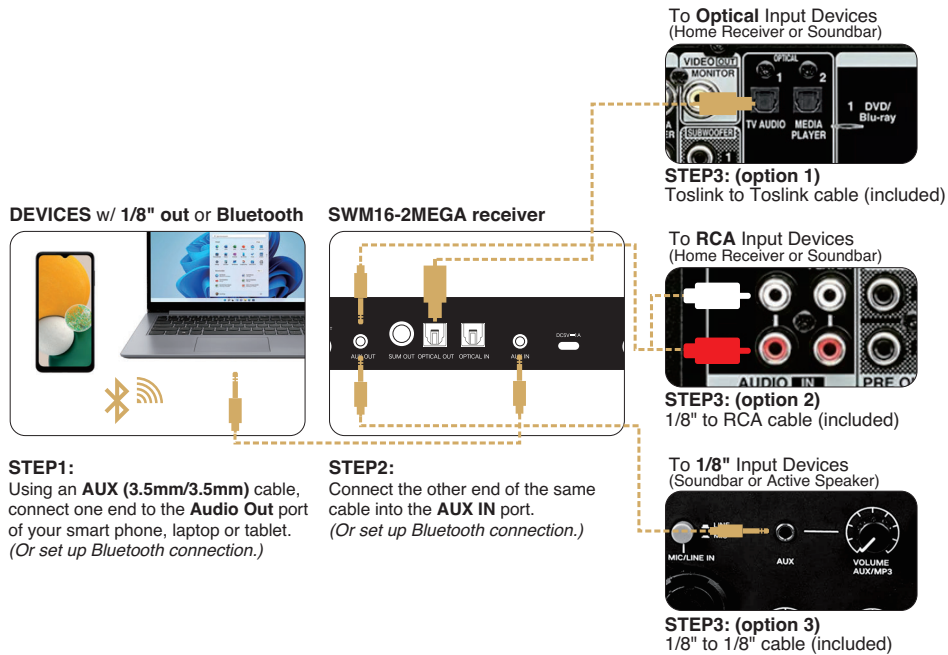
1. Turn on the CEC settings on your TV.



2. Change the audio formats on your TV to PCM.

CONNECTION DIAGRAM

CONNECT SMART PHONE/LAPTOP via 1/8" or BLUETOOTH

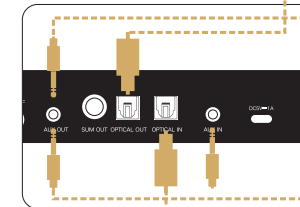


DEVICES w/ OPTICAL out



STEP1: Connect one end of the included **TOSLINK** Cable to the **Audio Out** port of your TV.

SWM16-2MEGA receiver



STEP2: Connect the other end of the same cable into the **OPTICAL IN** port.

To Optical Input Devices (Home Receiver or Soundbar)



STEP3: (option 1) Toslink to Toslink cable (included)

To RCA Input Devices (Home Receiver or Soundbar)



STEP3: (option 2) 1/8" to RCA cable (included)

To 1/8" Input Devices (Soundbar or Active Speaker)



STEP3: (option 3) 1/8" to 1/8" cable (included)

SPECIFICATIONS

Frequency	UHF
S/N Ratio	>100dB
T.H.D.	<0.5%
Frequency Response	30Hz~18KHz
Working Distance	100 ft line-of-sight
Typical Tone Control	+/-15dB @ 10KHz
Microphone Max Gain	+/-26dB
Spurious Emission	>60dB
Receiver Power Supply	DC 5V/1A
Receiver Power Dissipation	<800mW
Microphone Power Supply	2 x 1.5V AA Batteries
Microphone Power Dissipation	<250mW

Audio Interference, Artifacts, or Dropouts

- Identify and remove sources of interference: mobile phones, signal processors, electronics, etc.
- Charge or change batteries
- Move system away from metallic surfaces
- Provide line-of-sight from handheld microphone to receiver unit antennas

Distortion

- Lower channel volume
- Change or charge batteries
- Verify fidelity of signal cable to PA

TROUBLESHOOTING

Receiver & Microphone Does Not Connect

If the W/MIC A and W/MIC B knobs light on your receiver are not illuminated, the receiver and microphones is not paired correctly. You will need to turn off the microphone and receiver then back on again, they will automatically re-match. If the indicator on the W/MIC A and W/MIC B knobs are illuminated, they have been successfully connected.

Faint Sound or No Sound

- Verify connections to PA system
- Adjust channel volume knobs on the receiver / mixer
- Turn on handheld microphone
- Check that batteries are installed correctly
- Charge or change batteries
- Verify power adapter is plugged securely into the outlet
- Check that receiver unit is powered on

In the Package

SWM16-2MEGA

- 1 SWM16-2MEGA receiver/mixer
- 2 Handheld wireless microphones
- 1 Power adapter
- 1 1/8" to 1/8" audio cable
- 1 1/8" to RCA audio cable
- 2 Toslink to Toslink optical cables
- 1 User manual

How can we help you?

CONTACT OUR US-BASED SUPPORT TEAM

Simple or complex, your questions are important to us. For service, support or more information, please contact the Sound Town support team:

Email: support@soundtown.com