



CARPO-S1

MULTI-POSITION PA SYSTEM



Sound Town Inc. Accepts no liability for any loss which may be suffered by any person who relies either wholly or in part upon any description, photograph, or statement contained herein. Technical specifications, appearances and other information are subject to change without notice.

For the applicable warranty terms and conditions, including additional information regarding Sound Town's limited warranty, please find details online at:

<https://www.soundtown.com/pages/return-warranty>



Please carefully read the user manual before using our products.
Lea este manual atentamente antes de utilizar nuestros productos.

IMPORTANT SAFETY INSTRUCTIONS

1. Read all safety and operating instructions before using this product.
2. All safety and operating instructions should be kept for future reference.
3. Read and understand all warnings listed on the operating instructions.
4. Follow all operating instructions to operate this product.
5. This product should not be used near water, i.e. Bath tub, sink, swimming pool, web basement etc.
6. Only use dry cloth to clean this product.
7. Do not block any ventilation openings, it should not be placed flat against a wall or placed in a built-in enclosure that will impede the flow of cooling air.
8. Do not install this product near any heat sources, such as, radiators, heat registers, stove or other apparatus (including heat producing amplifiers) that produce heat.
9. Do not defeat the safety purpose of the polarized or grounding-type plug. A polarized plug has two blades with one wider than the other. A grounding-type plug has two blades and a third grounding prong. The side blade or the third prong are provided for your safety if the provided plug does not fit into your outlet, consult an electrician for replacement of the obsolete outlet.
10. Protect the power cord being walked on or pinched particularly at Plugs, convenience receptacles and the point where they exit from the apparatus. Do not break the ground pin of the power supply cord.
11. Only use attachments specified by the manufacturer.
12. Use only the cart, stand, tripod, bracket, or table specified by the manufacturer or sold with the apparatus. When a cart is used use caution when moving cart/apparatus combination to avoid injury from tip-over.
13. Unplug this apparatus during lightning storms or when unused for long periods of time.
14. Care should be taken so that objects do not fall and liquids are not spilled into the unit through the ventilation ports or any other openings.
15. Refer all servicing to qualified service personnel. Servicing is required when the apparatus has been damaged in any way; such as, power-supply cord or plug is damaged, liquid has been spilled or objects have fallen into the apparatus, the apparatus has been exposed to rain or moisture, does not operate normally or has been dropped.
16. WARNING: To reduce the risk of fire or electric shock, do not expose this apparatus to rain or moisture.
17. When the MAINS plug, or an appliance coupler is used as the disconnect device, the disconnect device should remain readily operable.
18. Protective Ground Terminal: The apparatus shall be connected to an AC main socket with a protective earth ground connection.
19. Please dispose of used batteries properly, following local regulations. Do not incinerate.



FEATURES

- The SOUND TOWN CARPO-S1 multi-position powered speaker system is designed for quality sound while takes small footprint. It is light enough to transport effortlessly.
- The CARPO-S1 is the ultimate all-in-one PA, floor monitor, practice amplifier and primary music system.
- It features versatile connections with inputs for microphones, music instruments, line level devices, TWS bluetooth linking and streaming devices which provide great compatibility with a variety of sound and speaker systems.

In the package

- 1 CARPO powered speaker
- 1 User Manual
- 1 Power adapter

How can we help you?

CONTACT OUR US-BASED SUPPORT TEAM

Simple or complex, your questions are important to us. For service, support or more information, please contact the Sound Town support team:

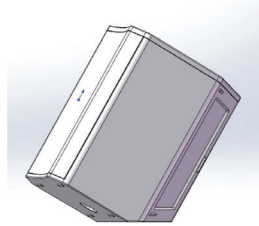
Email: support@soundtown.com

SYSTEM CONFIGURATIONS

The versatile CARPO-S1 system operates in different unique modes. Use the examples below to quickly identify the best mode for your applications.

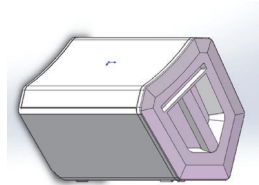
Tilt-Back (On floor)

For performance where your audience is close to you, tilt the CARPO-S1 onto its back edge. For best results, the performer should stand or sit to one side of the cabinet to avoid blocking sound from the audience.



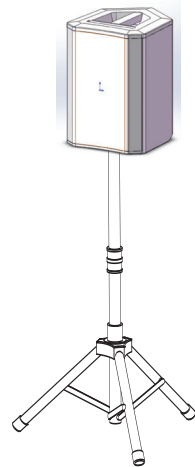
Monitor (On floor)

To use the CARPO-S1 as a professional floor monitor, place it on the ground horizontally, in front of and pointing toward the performer. Tilt the cabinet onto its side edge.

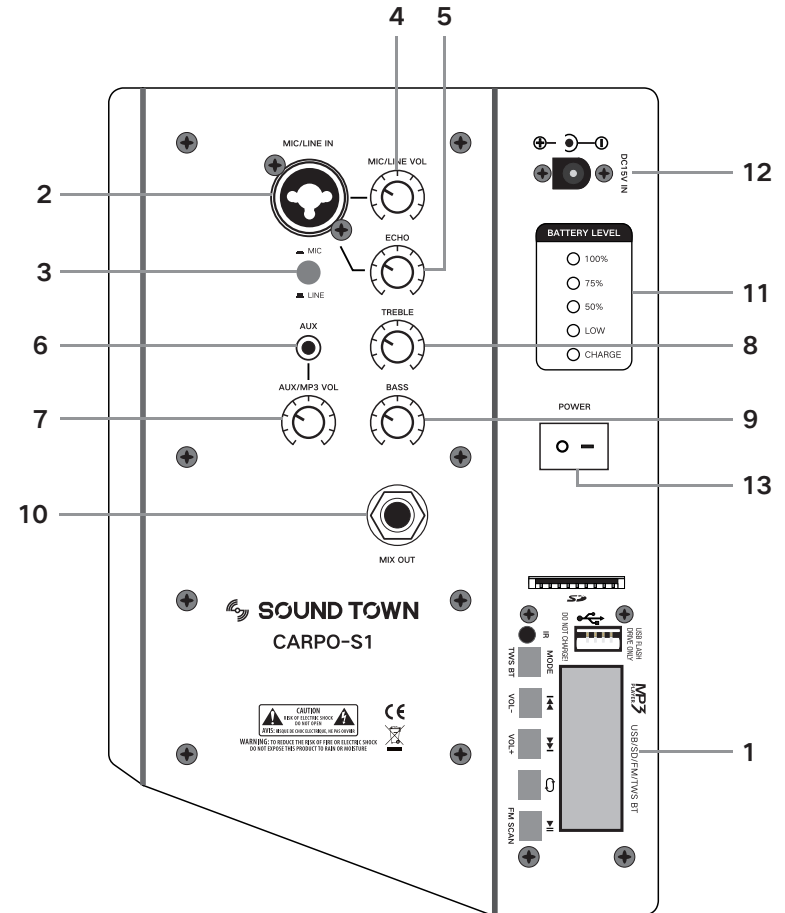


Stand (On speaker stand, table etc.)

Put the CARPO-S1 on a speaker stand, table or other elevated surface for general-purpose sound reinforcement.



OPERATIONS



OPERATIONS

1. MP3 Player: The Mp3 player support SD/USB/TWS Bluetooth/FM with LCD display.

MODE (TWS BT)	Short press to interchange between USB/SD/Bluetooth/FM mode Long press to start TWS bluetooth pairing to the other speaker
◀◀ (VOL-)	Short press to go to previous track Long press for volume down
▶▶ (VOL+)	Short press to go to next track Long press for volume up
↻	Short press to interchange between single cycle (ONE)/order play (ALL) /random play (RDO)
▶ (FM SCAN)	Short press to play/pause on Mp3 mode Long press for FM scan on FM mode

2. XLR & 1/4" jack combo input.

3. Switch between Mic or Line level input for the combo input connector.

4. Volume control for Mic/Line input signal.

5. Echo depth for Mic signal input.

6. 1/8" Aux input.

7. Volume control for Aux/Mp3 input signal.

8. Treble frequency boost/cut, control is "flat" in center position (no effect on sound).

9. Bass frequency boost/cut, control is "flat" in center position (no effect on sound).

10. 1/4" jack output to link out mixed signal to another amplifier or another powered speaker.

11. Battery level indicator.

12. IEC input: To connect the included IEC power adapter. (Support 100V~240V)

13. Power Switch: To turn on/off the unit.

BATTERY RECHARGE

The speaker has an internal, rechargeable battery capable of up to 5 hours of continuous audio on a full charge. Even though the speaker may have some charge when first taken out of the box, we recommend full charging your speaker before using the system.

To charge the battery:

1. Connect the speaker to a power outlet using the included power adapter.

2. Keep the system plugged in until the battery indicator changes to 100%, indicating the battery is fully charged.

The speaker utilizes a sealed lithium battery. When not in use, the battery will slowly self-discharge. If you are planning not to use the speaker for a long period of time, it is advised to full charge the unit before storing. It is also important to charge the unit every six months when not used. This will ensure a healthy battery and extends its life. If the battery is left with a very low charge of an extended period of time, it is possible to recharge the battery to working condition, but the charge time can take over 6 hours.

BLUETOOTH INSTRUCTIONS

Single speaker Bluetooth Pairing:

1. Turn on the power of the speaker, short press the 'MODE' button on the MP3 panel to launch Bluetooth mode. LCD screen message ('blue'), the speaker will become discoverable as 'S1'.
2. In the setting of your Bluetooth enabled devices, set it to 'discover' available devices. From the Bluetooth device list, select the 'S1' device.
3. The speaker is now paired with your Bluetooth enabled device. A voice prompt 'connected' will be heard.

Two speakers Bluetooth Pairing (TWS linking):

The system support 'Ture Wireless Stereo' linking which allows you to connect the other speaker by Bluetooth.

1. Turn on the power of the first speaker (Master speaker).
2. Short press 'MODE' button to interchange Bluetooth mode (screen message 'blue').
3. Turn on the power of the second speaker (Slave speaker)
4. Short press 'MODE' button (slave speaker) to interchange Bluetooth mode (screen message 'blue')
5. Long press 'TWS BT' button (master speaker) then both of the screen message on master and slave speaker will change to be 'bt' and you will hear a voice prompt 'LEFT' from the left channel speaker and 'RIGHT' from the right channel speaker, the two speakers will pair automatically.
6. Connect your Bluetooth audio device to the master speaker and enjoy the 'TRUE WIRELESS STEREO' sound.

Note: The two speakers are identical to each other, either one can be used as master or slave speaker.

TECHNICAL INFORMATION

Mechanical

LF size: 8"

HF size: 1" titanium compression driver

Cabinet size: 10" x 11.3" x 12.6" (W x D x H)

Cabinet weight: 14 Lbs

Shipping Carton Size: 11.4" x 13" x 15.9"

Shipping Gross Weight: 16 Lbs

Electrical

AC power rating: 100~240V, 50/60Hz 200W max

Battery: 12v, 2200mAh