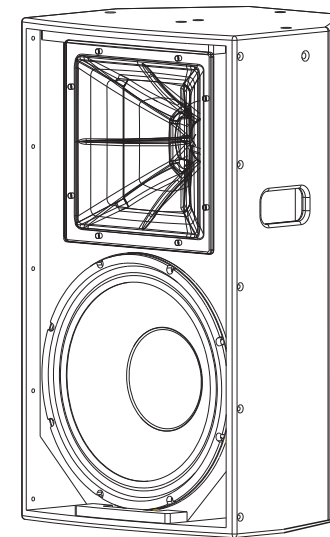


1. Balanced XLR input.
2. Passthrough XLR output.
3. RS-485 connector.
4. USB connector (Type B).
5. Mode selector.
6. Volume control.
7. Limit LED.
8. Power LED.
9. AC input (110V~240V)
10. AC output (110V~240V)
11. Power switch.



CARME-112PW
CARME-115PW
 PROFESSIONAL ACTIVE SPEAKER
 (Built in Class D amplifier with DSP)



Sound Town Inc. Accepts no liability for any loss which may be suffered by any person who relies either wholly or in part upon any description, photograph, or statement contained herein. Technical specifications, appearances and other information are subject to change without notice.

For the applicable warranty terms and conditions, including additional information regarding Sound Town's limited warranty, please find details online at:

<https://www.soundtown.com/pages/return-warranty>

OPERATION GUIDE

* The SOUND TOWN CARME-112/115PW active speaker has a Class D amplifier built inside. The professional DSP built in the amplifier module which allows user to design the sound curve according to different venue.

1. Package contains

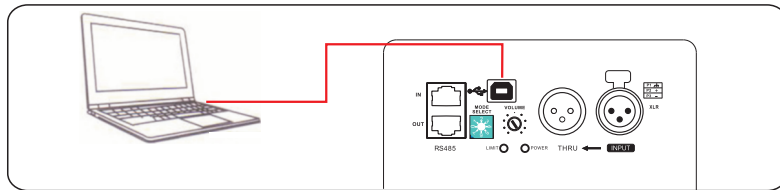
PA Speaker Cabinet x 1;
Neutrik powerCON cable x 1;
Data cable x 1 (USB type A to USB type B) x 1

2. Prepare

- 1) Download the DSP software 'CARME FULL RANGE DSP' from www.soundtown.com.
- 2) Install the software to your PC.

3. Set up

- 1) Connect the active speaker to a wall outlet through the power cable and switch the power to on.
- 2) Use the data cable provided in package and connect your computer (USB type A) to the amplifier module (USB type B), please refer to the connection diagram below.
- 3) Start the software on your PC to start DSP setting.

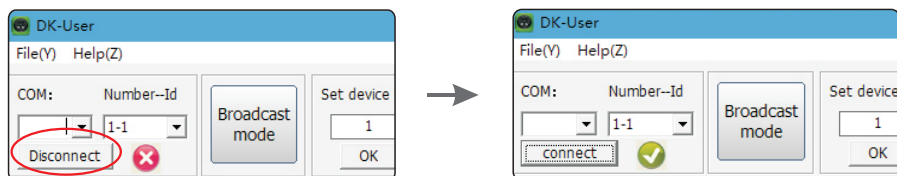


4. Software guide

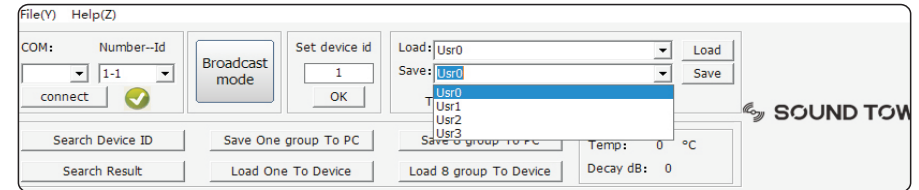
Default Setting:

There are also some default factory setting as below on choice, you can either choose these default setting by selecting the 'MODE SELECT' on the amplifier panel or design your own favorite curve.
'MODE 0': Crossover point at 2K Hz. (Recommend setting for CARME-115PW.)
'MODE 1': Crossover point at 2.2K Hz. (Recommend setting for CARME-112PW)
'MODE 2': Crossover point at 2.5K Hz.
'MODE 3': Crossover point at 3K Hz.

- 1) Connect: Click the "Disconnect" button, and the status will change to "connect". COM on the interface corresponds to your computer's USB port, each USB port has an individual COM. Device ID is associated with each speaker connected, the default device ID is set as 1. When multiple speakers are being used, a new device ID is not needed when you do not need to change the settings of a specific speaker. To control multiple speakers simultaneously, please choose the broadcast mode. To control a separate speaker, you will need to set up a new device ID. (Please note to use the 'broadcast' mode need to connect the Rs485 port instead of USB).



- 2) Save and load: you can save modes you have set in user0-user7, and you can load any mode from user0-user7 when the PC is connected with the module. When disconnected, the mode will set back to default. If you want to change the default setting, you can save your setting to PC and then load the setting from PC. Group saving and loading for 8 modes at the same time are also available.



- 3) Filter setting: In the "Main-HLPF" zone, adjust the High Pass Filter or Low Pass filter to the frequency you prefer, there are several slopping ratio on choice for each setting.

- 4) EQ setting: There are 6 adjustable frequency point can be set, each point can be adjusted of ascension or attenuation at the "Gain" column; In the "Q Value" column you can set the frequency range, small Q value represent wider range and big Q value represent narrower range.

- 5) Delay setting: Usually when different speaker can't deliver the at same speed, use the delayer built in can make several speaker's sound arrive at the same time, which eliminate the time discrepancy of different speakers.

