

GHIDINI  
1961  
GHIDINI







## Seating

---

Leisure Sofa, Armchair	014
Bridge Sofa	020
Shaker Sofa, Armchair	026
Abbracci Modular Sofa	032
Elephant Sofa, Armchair	040
Tarantino Sofa, Armchair, Ottoman	048
Milo Sofa, Armchair	054
Frame Sofa, Armchair, Dormeuse	062
Bold Sofa, Lounge Chair, Ottoman	072
Abbracci Sofa, Armchair, Ottoman	080
Infinito Sofa, Armchair	088
Dodo Sofa, Armchair	098
Katana Sofa, Lounge Chair	104
Katana Armchair	110
Portofino Sofa, Armchair	112
Opera Sofa, Armchair	122
Sweet Lounge Chair	128
Sipario Lounge Chair	130
Bucket Lounge Chair, Bergere	132
Bold Armchair	164
Coast Chair	174
Miami Chair	257
Leporello Stools	262

## Tables

---

Ottanta Tables	136
Locust Tables	142
Shaker Tables	146
Frame Dining and Coffee Table	152

Bold Dining and Coffee Table	160
Native Tables	168
Coast Table	172
Botany Table	176
Legs Table	178
Milo Coffee Table	180
Miami Table	257

## Cabinets & Bookshelves

---

Tarantino Cabinets	184
Frame Cabinets	200
Frame Bookshelves	204
Bold Cabinets	208
Zuan Cabinets	218
Legs Bookshelves	230
Incrocio	232

## Lighting

---

One on One	234
Jackfruit Lamp	236
Dusk Dawn	238
Mio, Bio, Trio	240
Can Can	242
Factory	248
Sfere	249
Indipendant	250

## Coffee Tables & Complements

---

Porto	233
Gioiello Mirror	252
Kaleidos	254
Sunset Mirror	256

Fan Mirror	258
Frying Pan Mirror	260
Portrait with Birdie	261
Da Vinci Table	264
Flowers Tables	265
Opera Tables	266
Tumbrella & Butler Umbrella Stands	267
Butterfly	268

## Accessories

---

Jackfruit	270
Tornado	272
Here (Thimble)	274
Nowhere (Bullet Vase)	275
There (Push Pin)	276
Omini Bowls	277
Cestini	278
Flirt Collection	279
Tip Top Collection	284

## Rugs

---

Triple Wave Rugs	280
Connect Rugs	282

## Materials Collection

---

## Technical Specifications & General Index

---

# THE COMPANY

Ghidini Bosco of Villa Carcina, in the province of Brescia, belongs to Italy's manufacturing excellence, thanks to their unparalleled manufacturing skills. A specialist in die casting brass, aluminium and zamak, the company excels in combining advanced technologies and rapid prototyping with traditional craft skills. Their catalogue includes thousands of products, ranging from lighting fixtures to furnishing items, decorative items and handles. Since over 50 years the company has established close ties with international architects and designers to develop custom products and create classical and contemporary art items.

Pieces, those of GHIDINI1961, destined to become iconic, to erase the boundary between art and design and to establish with the public a communion of intentions and views such as to translate into a loyal and lasting relationship, just like artistic artefacts. A demonstration of how the reliability and quality of a brand can become a guarantee of an investment capable of acquiring value over time.



Roberto Ghidini, CEO



Stefano Giovannoni, Art Director





# THE CRAFT

The entire production cycle takes place in-house and is characterised by a meticulous attention to detail: from the idea to the end product, passing through the various processing stages – from pressure die casting to lost wax and gravity casting, from machining to drilling, from satin-finishing to sand-blasting and polishing. These are the solid foundations of GHIDINI1961.

With over 50 years of history behind it, and an entrepreneurial wisdom that has been handed down from father to son, GHIDINI1961 presents furnishings, lamps and home accessories that are true testimonies of great Italian craftsmanship combined with state of the art production technologies, care for materials, aesthetics and attention to detail.

With this foundation, our products are not just meant to decorate a refined environment, but they represent something valuable, to be cared of, that can be passed over through generations thanks to its intrinsic and long lasting value blended with iconic and timeless design.

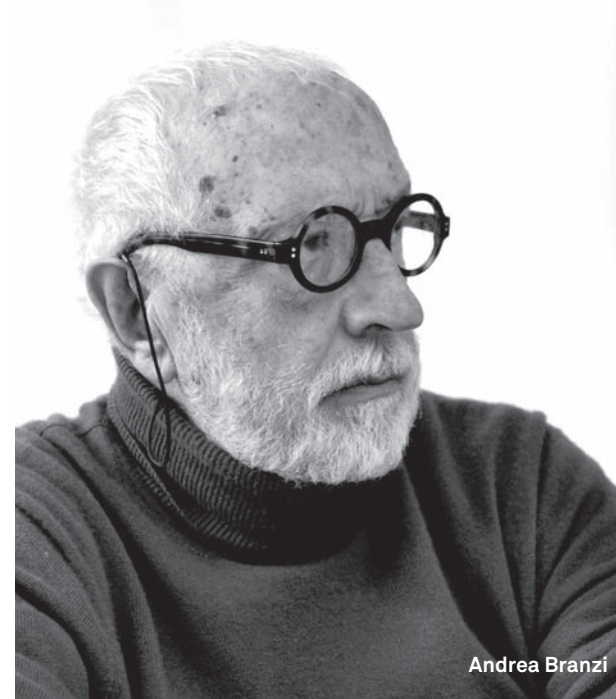




# THE DESIGNERS

As Art Director, Stefano Giovannoni has put together a diversified creative team able to enhance the properties of brass. With this valued material which features golden tones and reflections, has developed a remarkable collection of items, furniture and accessories for daily use. All this products are characterised by innovative design and high quality manufacturing, creating an exclusive mood coherent with the nature and the best tradition of brass.

The collection has been designed by renowned international firms such as Aldo Cibic, Alessandro Mendini, Andrea Branzi, Branch Creative, Fernando and Humberto Campana, Noè Duchaufour-Lawrance, Setsu & Shinobu Ito, Richard Hutten, Elisa Giovannoni, Stefano Giovannoni, Paolo Rizzatto, Tomek Rygalik, Studio Job and Nika Zupanc. The collection ranges from large furniture statements to tiny golden accents that decorate and give warmth to stylish residential environments.



Andrea Branzi



Paolo Rizzatto



Nika Zupanc



Alessandro Mendini



Aldo Cibic



Richard Hutten



Johanna Grawunder



Elisa Giovannoni



Noè Duchaufour-Lawrance





Lorenza Bozzoli



Campana Brothers



Studio Job



Branch Creative



Tomek Rygalik



Setsu&Shinobu Ito

# THE PRODUCTS

The collection includes works of art, where metal acquires an almost sculptural power, upholstered furniture, dining tables, cabinets and finely chiseled home accessories, bearing witness to Ghidini's obsession for details. The series embrace almost all articles for use at home, which are interpreted in an unusual joyful way: from comfy and versatile sectional sofas, to very seductive, almost sculptural upholstered design statements, such as the Abbracci sofa, conceived Lorenza Bozzoli or Stefano Giovannoni's Frame collection, where geometric shapes are softened by the velvety surface of metal to create a sleek collection of sofas, armchairs, dining tables and bookshelves.

Giovannoni, who acts as Creative Director for the brand, has given life also to a series of other iconic products, such as the Shaker family, the Elephant sofa and armchair and the Native dining tables, that are all characterized by a very strong design language.

In its rich variety, the collection is a compendium of the most significant contemporary creative expressions, interpreted and enhanced by Ghidini's skillful expertise and ability to interpret metal in all its possible forms.





Leisure Sofa, design Lorenza Bozzoli



# LEISURE

Modular sofa composed of two basic elements that are joined with a belt characterized by a brass buckle. The seat is deep and comfortable with soft and wide curves.







LEISURE ARMCHAIR Design Lorenza Bozzoli









# BRIDGE

A large sofa characterized by a generous shaped backrest that wraps the elliptical seat suspended between its powerful arms.  
An iconic object of great expressive power capable of catalyzing the surrounding space.







**BRIDGE SOFA** Design Stefano Giovannoni



Bridge Sofa, design Stefano Giovannoni





Shaker Sofa and Armchair, design Stefano Giovannoni



# SHAKER

Shaker is a sofa of memory and sophisticated elegance.

The rigorous layout of the cushions and the backrest is combined with precious metal elements that give to the product a strong identity.

The strap holding the armrests and wheels in continuity with the support feet, specifically designed by the designer, are die-cast with the quality and craftsmanship that distinguishes the company's heritage.











Abbracci Modular Sofa, design Lorenza Bozzoli



# ABBRACCI MODULAR SOFA

A hug conveys love and friendship, encapsulating a thousand words with elegance and simplicity while sparking the serotonin of happiness and relaxation.











Abbracci Modular Sofa, design Lorenza Bozzoli



ABBRACCI MODULAR SOFA Design Lorenza Bozzoli





Elephant Sofa, design Stefano Giovannoni



# ELEPHANT SOFA

A large sofa characterized by a fluid movement that shapes the backrest between elliptical sections lowering to create the armrests where the seat remains suspended in. Proposed here with an elegant finish in nubuck leather.







Elephant Sofa, design Stefano Giovannoni





Elephant Sofa, design Stefano Giovannoni



**ELEPHANT ARMCHAIR** Design Stefano Giovannoni





Tarantino Sofa, design Lorenza Bozzoli



# TARANTINO

Soft and welcoming, this sofa is inspired by the 70's; a decade that changed our culture forever through freedom and self-discovery.

The Sofa invites you to a world of fantasy where you can indulge in the comfort and coziness of your passions.

Tarantino, as if following a skillful plot, lends itself to composing various original and alternative solutions integrated by the soft goose down cushions covered with textured cotton corduroy proposed in colors inspired by the 70s.







**TARANTINO ARMCHAIR** Design Lorenza Bozzoli





# MILO SOFA

Milo is an evolution of the Frame sofa which adopts the same extruded aluminum profile, combined with a different joint and foot. The metal structure is now simplified and the frame, instead of rising to structure the armrest, supports the padded part composed by the seats and backrest. The foot bears the load of the frame, tapering its shape to flaunt a refined elegance.











**MILO ARMCHAIR** Design Stefano Giovannoni



**MILO SOFA** Design Stefano Giovannoni





Milo Sofa, design Stefano Giovannoni







# FRAME

A new collection composed of sofas, armchairs, dining and coffee tables, bookshelves and cabinets. Everything starts from a simple element: "the joint", which, combined with elegant rounded 45 degrees extrusions, creates an almost infinite family.

The collection is characterized by organic junctions that, in their possible combinations, create minimal, compact and powerful structures. Frame is built starting from few elements that are able to create a large family with essential lines.







**FRAME SOFA** Design Stefano Giovannoni



Frame Armchair and Frame Cabinet, design Stefano Giovannoni





Frame Dormeuse, design Stefano Giovannoni



FRAME DORMEUSE Design Stefano Giovannoni





Frame Sofa and Cabinet, design Stefano Giovannoni







# BOLD

This family of products makes a bold statement with its generous cylindrical foot, connecting its structural perimeter while delimiting the objects that compose it.

The distinctive metal rim that supports the seats, the tables, the cabinets, graphically encompasses the material with which they are made. This is beautifully portrayed in the tables, where the marble tabletop matches with the legs in turned marble, or with the armchairs featuring leather seats and legs of the same color.







Bold Sofa and Lounge Chair, design Elisa Giovannoni











# ABBRACCI SOFA

A hug conveys love and friendship, encapsulating a thousand words with elegance and simplicity while sparking the serotonin of happiness and relaxation.







**ABBRACCI ARMCHAIR** Design Lorenza Bozzoli







Abbracci Collection, design Lorenza Bozzoli



**ABBRACCI OTTOMAN** Design Lorenza Bozzoli





Infinito Sofa, design Lorenza Bozzoli



# INFINITO SOFA

Infinite in endless seating compositions; and infinite in freedom of expression. This sofa, with only 3 elements, allows for a wide range of seating compositions, each with different depths.







Infinito Sofa and Side Table, design Lorenza Bozzoli





Infinito Sofa and Side Table, design Lorenza Bozzoli



INFINITO SOFA Design Lorenza Bozzoli





**INFINITO ARMCHAIR** Design Lorenza Bozzoli



**Infinito Sofa**, design Lorenza Bozzoli



# DODO SOFA

Dodo is a variant of the Frame sofa where the supporting structure on which the seat rests is lowered, giving it greater consistency. The supporting frame brushes the floor without touching it, while the generous height of the seat cushions provides great comfort.













# KATANA SOFA

The sofa refers to the iconic and seductive shapes of the classic Chesterfield, reinterpreted with renewed elegance, and thanks to the gentle curvature of the leg it resolves the connection with the seat and the back. This makes it enveloping and comfortable, its height and width support a relaxed sociability. In the elliptical leg, every millimeter has been designed and calibrated, as well as the relationship between seating and structure.

Fittings and lines, grafts and joints, everything is designed for the best harmony. The dialogue between the parties, as in architecture, is for the Milanese architect a perfect orchestration.







Katana Sofa and Lounge Chair, design Paolo Rizzatto



# KATANA

The series of seatings "Katana" identify and combine in a balanced synthesis the three elements that characterize seats (the legs, the seat, the backrest), but at the same time makes them understandable one separated from the other, enhancing in that way the different specific characteristics and mutual relations.



**KATANA LOUNGE CHAIR** Design Paolo Rizzatto



**Katana Lounge Chair**, design Paolo Rizzatto





**KATANA ARMCHAIR** Design Paolo Rizzato



Katana Armchair, design Paolo Rizzato



# PORTOFINO SOFA

The Portofino reimagines the classic Chester sofa by deconstructing it to make it contemporary and modular. Composed by a variety of elements, this sofa becomes an object of memory and at the same time innovative, adaptable to a multiple variety of contexts.







Portofino Sofa, design Stefano Giovannoni





Portofino Sofa, design Stefano Giovannoni





Portofino Sofa, design Stefano Giovannoni



PORTOFINO ARMCHAIR Design Stefano Giovannoni









Opera Sofa, design Giovannoni Design Studio



# OPERA SOFA

Here, the classic Chester is revisited with a dreamlike language through the roundness of the shapes and the fluidity of the lines, while the backrest, unlike the Portofino, maintains the classic capitonné.







Opera Sofa, design Giovannoni Design Studio



OPERA ARMCHAIR Design Giovannoni Design Studio





Sweet Lounge Chair and Ottoman, design Elisa Giovannoni

# SWEET

The design of the armchair takes place by subtracting material from a full spheroidal shape, as if a large spoon created a seat inside a yeasted cake.

Inside it is a classic bergère while the rear view projects a more sculptural and prominent presence. A cozy and sweet "Panettone" where you can sit resting your feet on a soft ottoman.



**SWEET LOUNGE CHAIR** Design Elisa Giovannoni



# SIPARIO

The draped Nabuk backrest recalls a stage curtain: Like a drape that closes the stage in theaters, here gently wraps the soft seat of small dimensions of this lounge chair.







Bucket Lounge Chair, design Elisa Giovannoni

# BUCKET

A conical and regular shape reminiscent of an upside down bucket encloses the soft seat cushion, the backrest sets like a detail and can have different heights, depending on the type of seat. The design, which is made up of different aggregated elements, allows you to freely combine materials and colors together and to give character to this armchair with fashionable connotations, where the detail becomes the protagonist.



**BUCKET LOUNGE CHAIR** Design Elisa Giovannoni







# OTTANTA

Large dining table made of natural or dark oak. The legs placed at the corners of the table top are positioned at 45 ° with an aesthetic inspired by the 80s of the last century.











Ottanta Dining Table, design Lorenza Bozzoli



OTTANTA DINING TABLE Design Lorenza Bozzoli







# LOCUST

A table characterized by an elegant movement of sharp surfaces that join the top with the legs.  
The result is a large table with a refined and nervous design that evokes an insect in tension, ready to snap.







Shaker Dining Table, design Stefano Giovannoni



# SHAKER TABLES

A large six-legged table, a classic object wisely redesigned to bring it back to a contemporary dimension.

The elegant metal wheel that characterizes the sofa is proposed here as the end of the sinuous turned legs, allowing the table to be moved.

The Shaker table is made of cherry wood or matt black lacquered wood.







Shaker Dining Table, design Stefano Giovannoni



SHAKER DINING TABLE Design Stefano Giovannoni



# FRAME TABLE

A new collection composed of sofas, armchairs, dining and coffee tables, bookshelves and cabinets. Everything starts from a simple element: "the joint", which, combined with elegant rounded 45 degrees extrusions, creates an almost infinite family.



Frame Dining Table, design Stefano Giovannoni

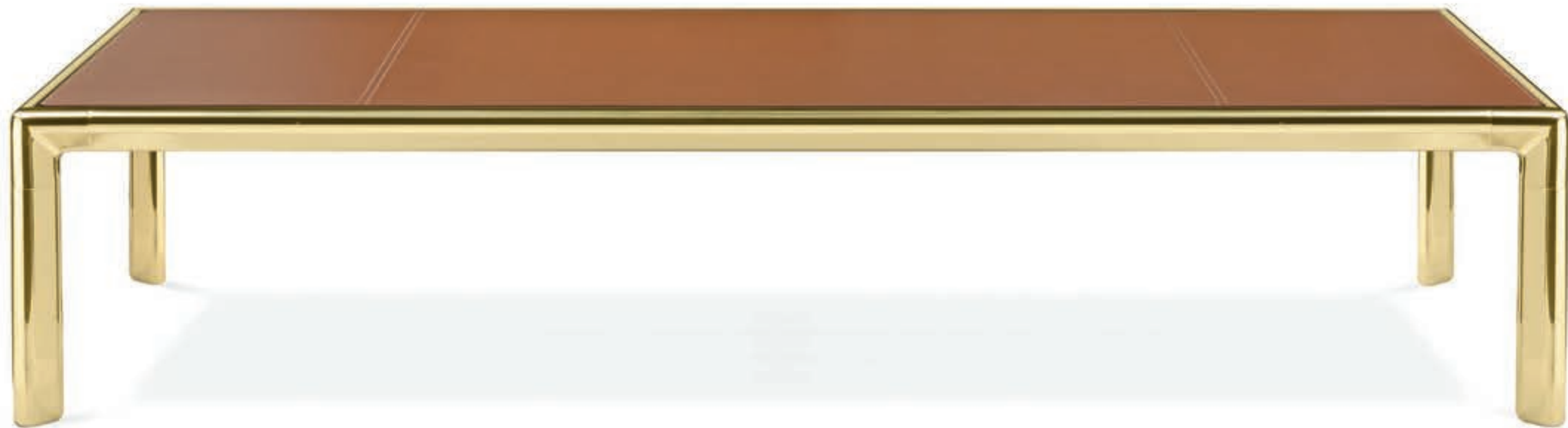










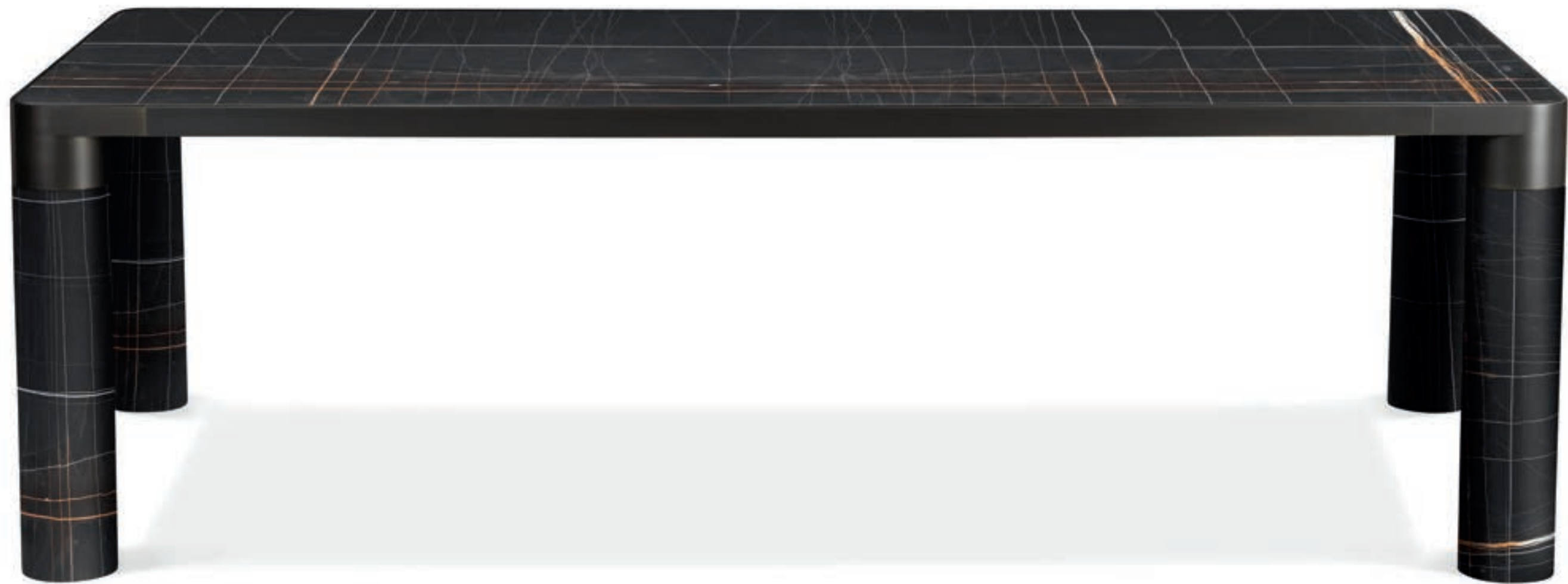






Bold Dining Table and Armchair, design Elisa Giovannoni







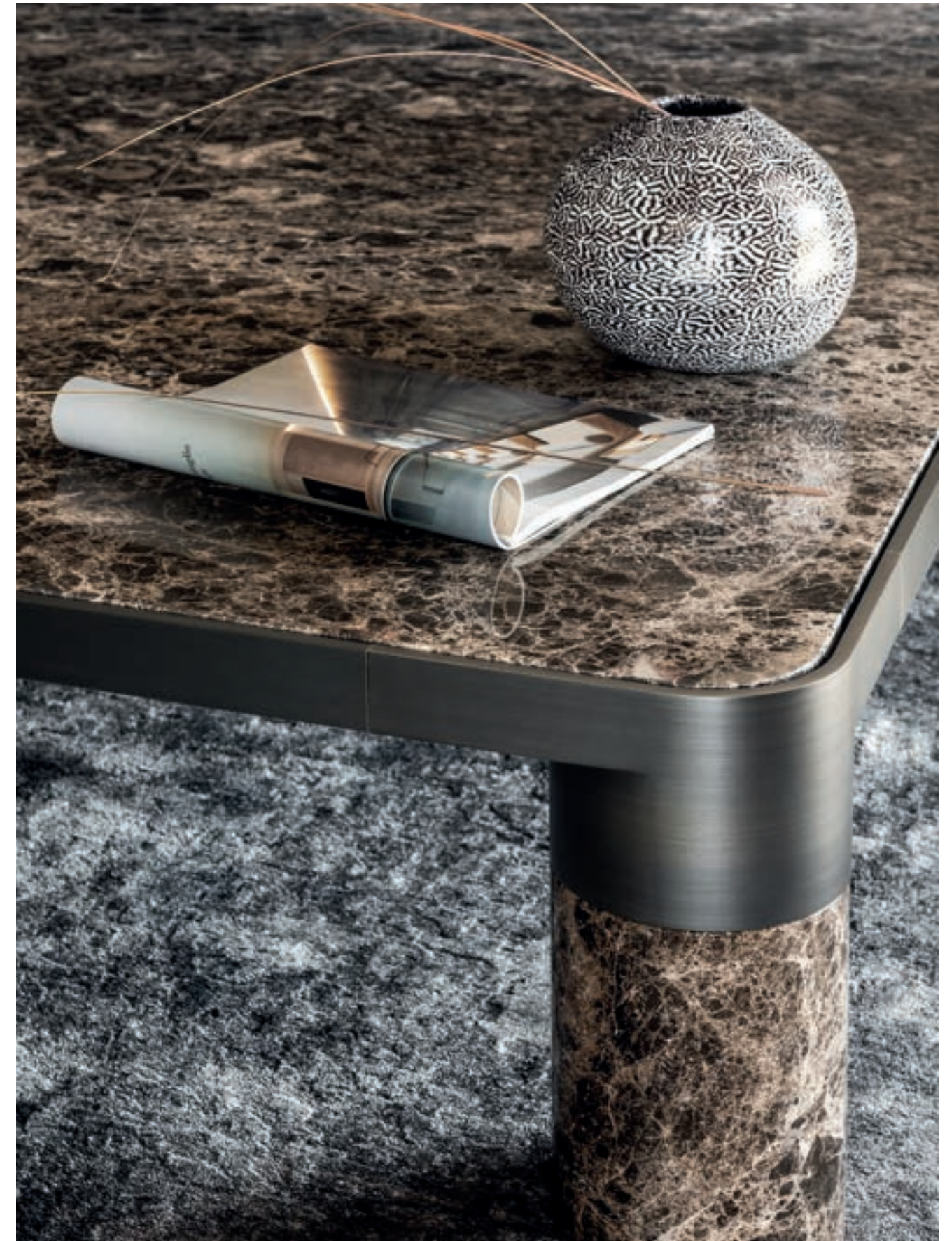


**BOLD ARMCHAIR** Design Elisa Giovannoni



**Bold Armchair**, design Elisa Giovannoni





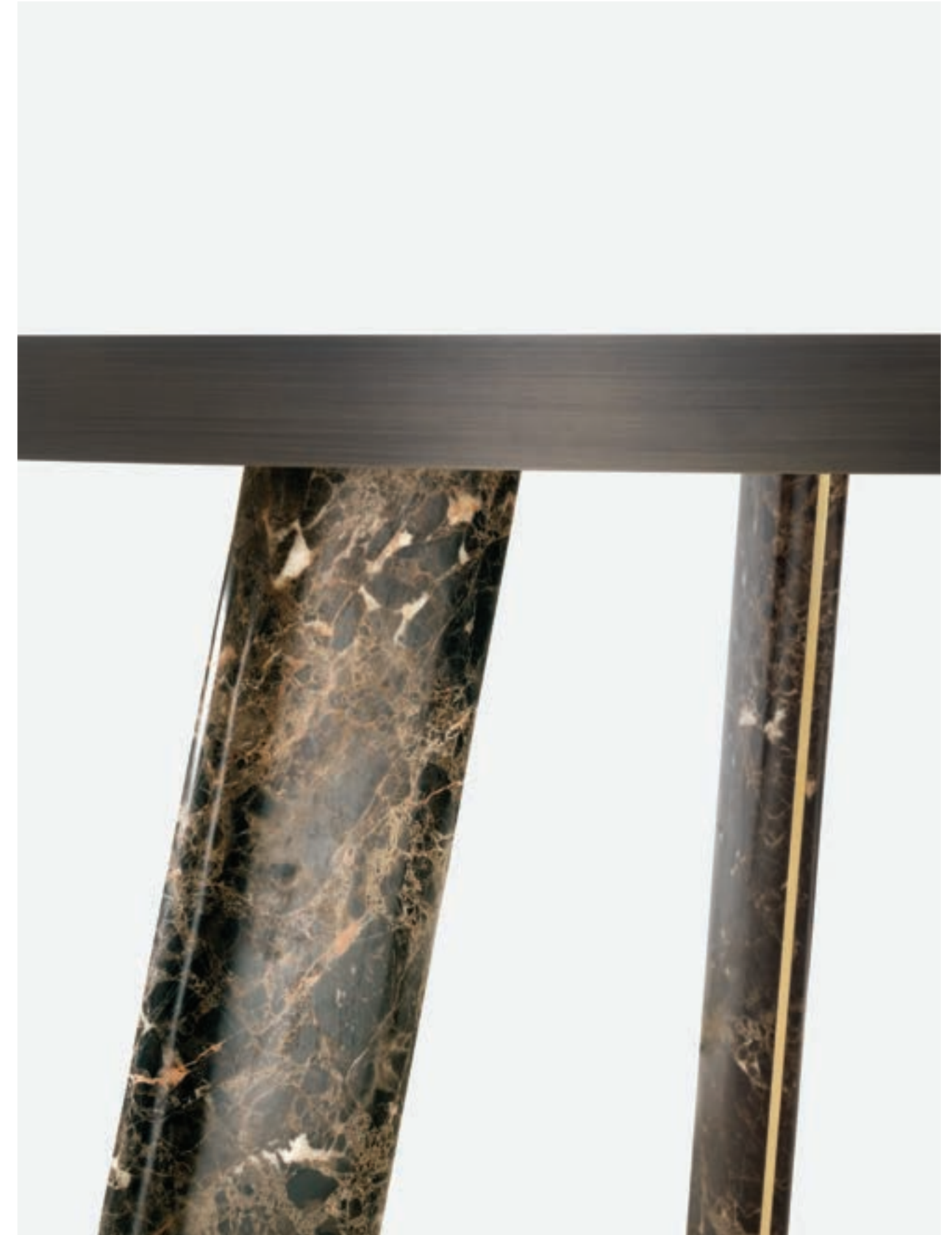






# NATIVE

Native tables are pure objects that, in their archetypal essentiality become new classics. Available in two versions: round or rectangular rounded on the corners in oak or marble, with the top edge in burnished metal.









# COAST CHAIR

Inspired by the Northern California coastline, the Coast Chair's design draws its influence from a landscape of wandering, golden hills and the meandering roads that intersect them. Blending refined architectural elements with fluid gestures, the chair's form brings surprising design moments to a functional, everyday object.



**COAST CHAIR** Design Branch Creative



Coast Chair, design Branch Creative



# BOTANY TABLE

Family of tables characterized by the elegant and sophisticated metal structure supporting the tabletop. Inspiration comes from turn of century outdoor furniture meeting modern high-quality metal crafting. Intricate weaving of gilded rods creates a beautiful visually light three-dimensional ornament.





# LEGS TABLE

From the idea of almost a unique object in its perfect craftsmanship, to the system to be built starting from the base. A column made of brass that multiplies to infinity, to be interrupted and resumed to hold glass tops, wood or marble to configure even angular shelves and tables of any sizes and shapes.





# MILO COFFEE TABLE

Milo coffee table adopts the same extruded aluminium profile of the Frame tables. The foot bears the load of the frame, tapering its shape to flaunt a refined elegance.













# TARANTINO LIVING CABINET

The "Tarantino Django" is a low living cabinet in dark oak with shelves and open compartment prepared with cable holes for media and infotainment connections. The cylindrical elements in aluminum characterize the aesthetics of the "Tarantino" series with the function of handles.





# TARANTINO DINING CABINET

The "Tarantino Gloria" is a dining cabinet in oak with shelves and curved side doors. The cylindrical elements in aluminum perform the function of handles.











Tarantino Dining Cabinet, design Lorenza Bozzoli



TARANTINO DINING CABINET Design Lorenza Bozzoli



# TARANTINO BAR CABINET

The "Tarantino Manhattan" is an oak bar cabinet with pull-out top, drawers and side compartments to hold glasses and bottles with internal lighting.

The aluminum cylinders that run vertically around the piece of furniture are, as in the whole "Tarantino" collection, the characterizing element, and in this case, they perform the function of handle. The open compartment for preparing cocktails is illuminated by a warm ambient light.







TARANTINO BAR CABINET Design Lorenza Bozzoli



TARANTINO BAR CABINET Design Lorenza Bozzoli





Tarantino Bar Cabinet, design Lorenza Bozzoli



TARANTINO BAR CABINET Design Lorenza Bozzoli



# FRAME LIVING CABINET

The Frame collection is composed of sofas, armchairs, dining and coffee tables, bookshelves and cabinets. Everything starts from a simple element: "the joint", which, combined with elegant rounded 45 degrees extrusions, creates an almost infinite family. In this case a simple structure based on Frame extruded aluminium profile sustains pure wooden monolith.









# FRAME BOOKSHELVES

The Frame bookshelves and table are characterized by metal organic junctions that, in their possible combinations, create minimal, compact and powerful structures. The bookshelves consist of a couple of vertical metal structures which create a bridge in combination with horizontal wooden shelves, while a X shaped tie rods keep together the structural elements.









# BOLD LIVING CABINET

This family of products makes a bold statement with its generous cylindrical foot, connecting its structural perimeter while delimiting the objects that compose it. With the massive dimensions and the softness of the fittings, the materials are enhanced in their characteristics creating a sculptural effect and giving a distinct personality to each element of the collection. Winner of Wallpaper Design Awards in furniture category.







Bold Living Cabinet and Ottoman, design Elisa Giovannoni







# BOLD DINING CABINET

The distinctive metal rim that supports the seats, the tables, the cabinets, graphically encompasses the material with which they are made. This feature is beautifully portrayed in the cabinets, where its profile goes up to define pure and simple wooden volumes with rounded corners.









# ZUAN

Different cultural references and needs in time and space are combined in the Zuan cabinet collection.

The classic types of Oriental timeless "cabinets" and the eighteenth-century English "chests" are revisited and updated.

The single piece combines three materials in a variable and versatile way: brass, wood and marble. The brass for the support frames and partition walls, the wood for the containers and the marble for the support surfaces.

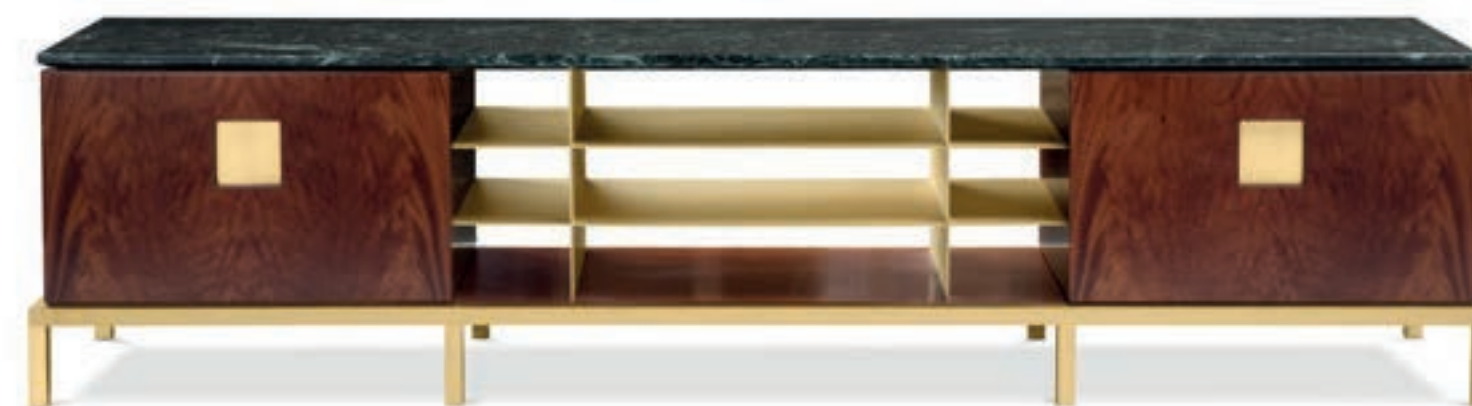






# ZUAN LIVING CABINET

Elegant family of cabinets with essential lines of Oriental flavor. The slender structure in essence is opposed by four slim legs in gilded metal. Each Zuan is recognizable by the detail of the support, a quarter of a circle with great aesthetic and functionality, which defines the character of the storage unit.











# ZUAN LARGE CABINET

The upper part of the cabinet is divided into four sections, in turn divided into smaller niches, drawn according to the golden proportion, inscribable in a perfect spiral. A wunderkabinet to exhibit our wonders.







Zuan Living Cabinet, design Paolo Rizzatto



**ZUAN LIVING CABINET** Design Paolo Rizzatto





Zuan Dining Cabinet, design Paolo Rizzato



ZUAN DINING CABINET Design Paolo Rizzato



# LEGS BOOKSHELVES

From the idea of almost a unique object in its perfect craftsmanship, to the system to be built starting from the base. A column made of brass that multiplies to infinity, to be interrupted and resumed to hold glass tops, wood or marble to configure even angular shelves and tables of any sizes and shapes.







**INCROCIO** Design Andrea Branzi



**PORTO CONSOLE** Design Andrea Branzi



# ONE ON ONE TABLE LAMP

This lamp speaks to the unique ability to light up different sections of the lamp body, and it expresses and inspires intimacy while talking with someone one on one.

The One on One is composed by two blown glass elements, with the lower being metalized and housing an internal glass cylinder to give a sculptural effect to the light source. The upper glass is frosted to provide a significant brightness.







Jackfruit Table Lamp, design Campana Brothers

## JACKFRUIT TABLE LAMP

The Jackfruit it is composed of two overlapping cylinders, the large stem supports an important brass lampshade decorated with a thousand leaves bent by the wind. The perforated structure and the opening of the lampshade create suggestive radiations of light, like light passing through the dense foliage of a tropical forest.



JACKFRUIT TABLE LAMP Design Campana Brothers



# DUSK DAWN

"It's the time when the sun drops below the horizon, leaving a glow that signals the arrival of the night, and gently takes us back to the warm embrace of dawn light in the morning."  
An intersection game of two forms to define a soft and geometric tone, a cloud of light arising from the glass diffuser seated on a solid brass cone.





# MIO BIO TRIO

Mio, Bio and Trio are born from the idea of creating a gentle form, light but consistent and timeless, using brass as a single material.

Thanks to the versatility of the rod it is possible to create articulated and original structures, while the sheets allows to realize the lampshades which spread a golden light, warm and soft. “

The satinated finish give these sleek table lamps a refined and understated allure allowing them to easily feature in residential, hospitality and office environments.





# CAN CAN

Can Can is a kick of light up and down. A multi-directional light, adjustable for maximum flexibility and effect, Can Can easily becomes task, accent and ambient light all at once. With Can Can, light is a result of personalized choreography. Light is a subjective quality: Can Can gives options.



**CAN CAN TABLE LAMP** Design Johanna Grawunder



**Can Can Floor Lamp**, design Johanna Grawunder













Factory Lamp, design Elisa Giovannoni



SFERE DOUBLE Design Paolo Rizzato





# INDIPENDANT

The inspiration came from utilitarian factory lamps. The key element is the way they hang. A simple, elegant pendant lamp which works in many different environments. The brass gives a warm reflection and they can be used both at home as well as in commercial environments such as shops and restaurants.



# GIOIELLO MIRRORS

These pieces instantly evoke stardust-spangled memories of exotic empires past. A titillating triumph that turns the spirit of endless summer malaise into excitement, and distanced detachment into a visceral desire to shop, to have, to run your hands over exquisitely polished surfaces.



**GIOIELLO ROUND MIRROR** Design Nika Zupanc



Gioiello Free Standing Mirror, design Nika Zupanc



# KALEIDOS

Large sculptural wall light in stainless steel.

The piece is composed of six mirror blades. The gilded mirrors create a kaleidoscope of golden tones and reflections. The piece can be used as a lamp as it is backlit', explains Fernando Campana. And Humberto adds 'It will be a mirror with the possibility of different sizes and colors. A geometric piece that can produce various designs. We were inspired by Lygia Clark's Bicho critter sculptures'.





# TAKE ME TO MIAMI

These pieces instantly evoke stardust-spangled memories of exotic empires past. A titillating triumph that turns the spirit of endless summer malaise into excitement, and distanced detachment into a visceral desire to shop, to have, to run your hands over exquisitely polished surfaces.



**SUNSET MIRROR** Design Nika Zupanc



Take me to Miami, design Nika Zupanc





Fan Mirror, design Setsu & Shinobu Ito



FAN MIRROR Design Setsu & Shinobu Ito





Frying Pan, design Studio Job



Portrait with birdie, design Elisa Giovannoni



# LEPORELLO

The height-adjustable stool, subject of which you can appreciate the adaptability with a gesture, in different contexts and users, becomes a precious object, with light or dark oak legs slightly bent and round seat in die casted brass.



**LEPORELLO JUNIOR** Design Paolo Rizzato



**LEPORELLO SENIOR** Design Paolo Rizzato





**DA VINCI TABLE** Design Richard Hutten



**FLOWERS TABLE** Design Stefano Giovannoni





**OPERA TABLES** Design Richard Hutten



**TUMBRELLA & BUTLER UMBRELLA STANDS** Design Richard Hutten



# BUTTERFLY

Coats flit from coat hanger to coat hanger like butterflies go from one flower to another. Butterflies have been a source of inspiration through art history. From the ancient Egypt, to the Renaissance until now it has always been a theme. The Butterfly coat hanger is both playful and elegant. Available in a single version too – to be hanged to the wall.



**BUTTERFLY COAT RACK** Design Richard Hutten



# JACKFRUIT

Jackfruit is a numbered vases edition, an object that for its exclusivity completes every environment with its strong sculptural presence.

The vases are available in two different finishes. The first is a single block of hand casted bronze. The second mixes two materials, brass and wood, and is divided into three sections: the upper and lower are composed of an articulated brass casting, the central part is in wood. Both are presented as absolute protagonists of the living.





# TORNADO

Spiral of super-glossy brass, a dizzying vortex of reflected light. A thousand liquid rings rise from a hypothetical sea, expand and crown themselves with fragrant flowers.

It's a highly evocative object, fascinating for its shape and shine.

The one designed by the Campana Brothers is a good tornado, the only one that brings color and light into the home.







HERE (THIMBLE) Design Studio Job



Nowhere (bullet vase), design Studio Job





**THERE (PUSH PIN)** Design Studio Job



**Omini Bowls**, design Stefano Giovannoni





Cestini Collection, design Andrea Branzi

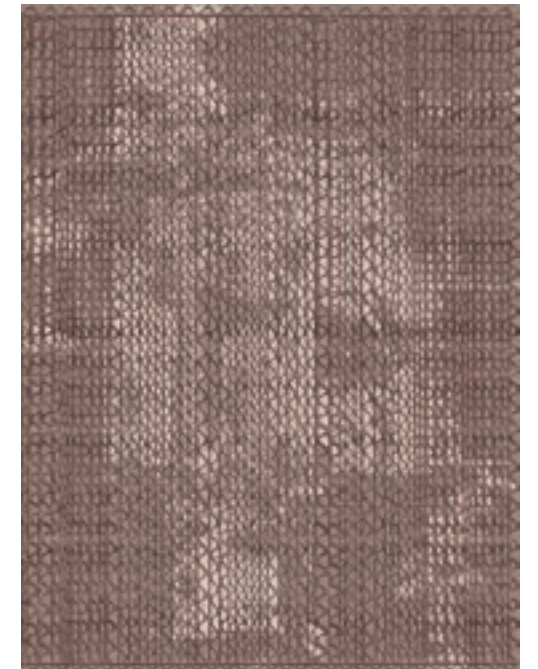
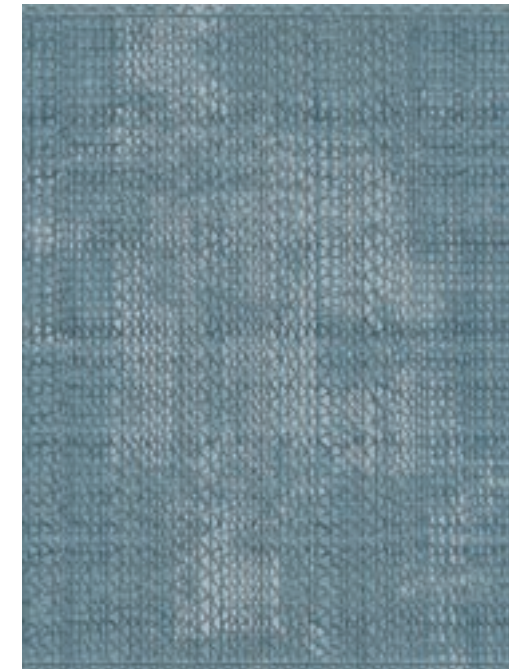
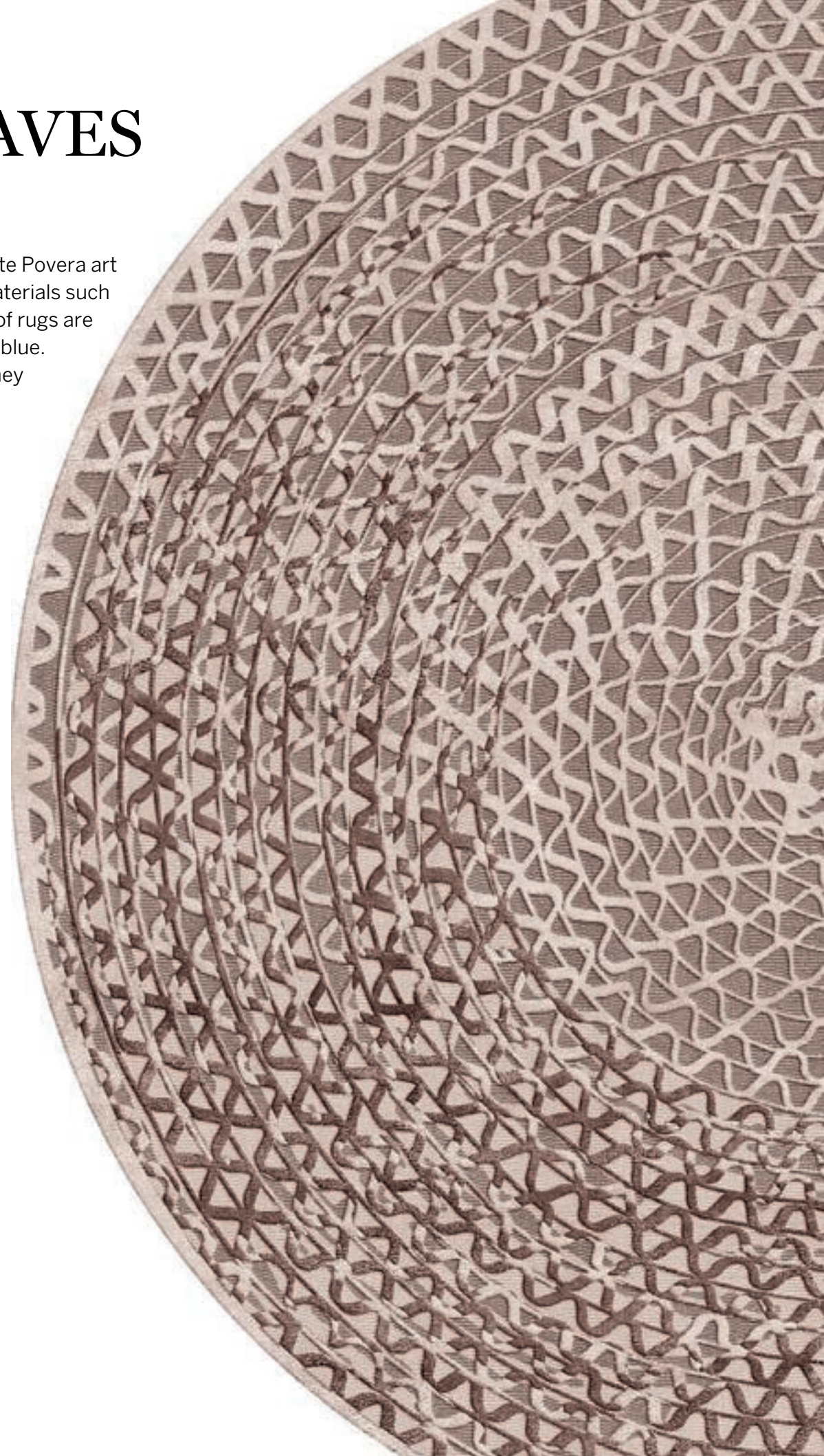
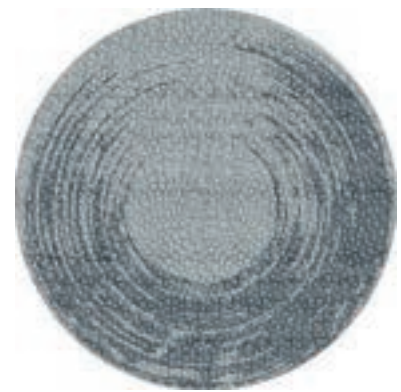
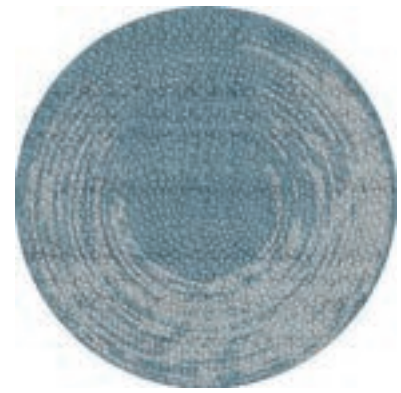


Flirt Collection, design Noé Duchaufour-Lawrance



# TRIPLE WAVES RUGS

Inspired by the experimentation of Arte Povera art of the seventies that used unusual materials such as corrugated cardboard, this family of rugs are available in shades of beige, gray and blue. The important dimensions in which they are proposed can be customized on customer request.





# CONNECT RUGS

Made of natural materials in different textures, the Connect rugs bring warmth to any room. The rich monochrome color palette in a variety of shades will be the center of your space.

