



MATERIALS COLLECTION 2022

METAL FINISHES



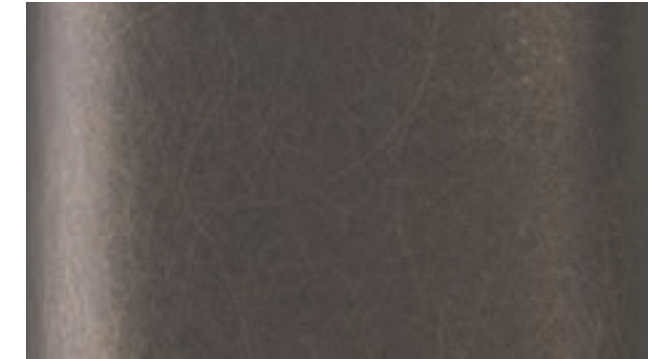
Polished brass PB



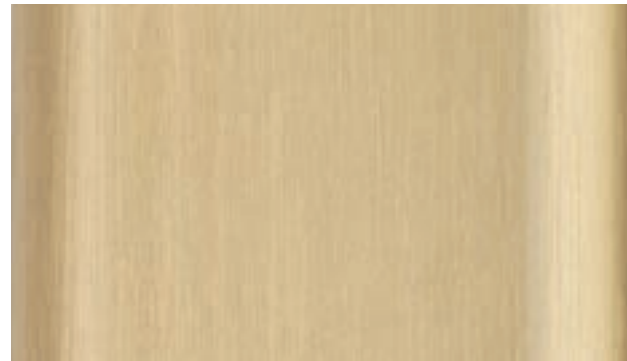
Chrome CH



Satin Platinum SP



Orbital Bronze OB



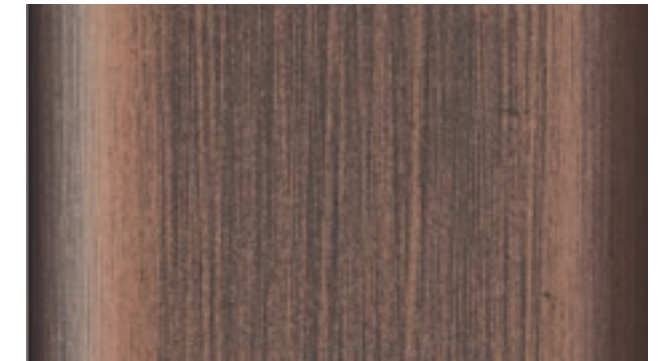
Satin brass SB



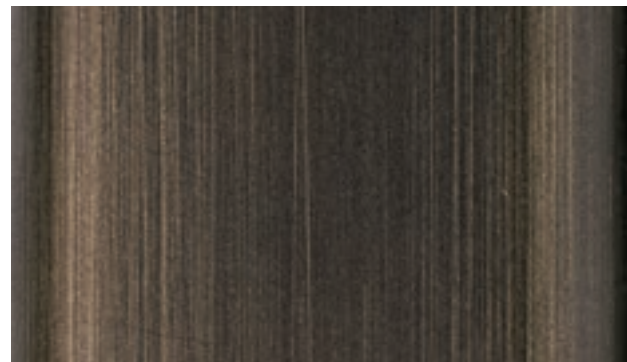
Light burnished brass LB



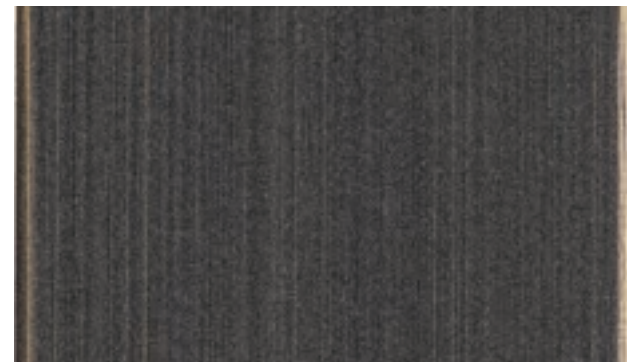
Satin Titanium ST



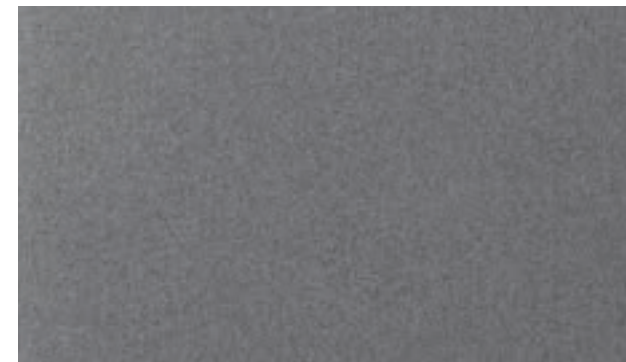
Brushed Copper BC



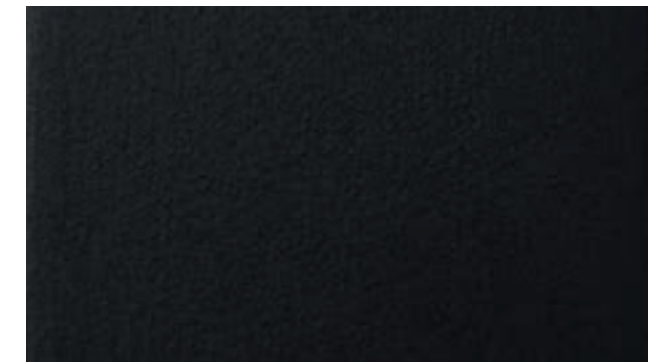
Dark burnished brass DB



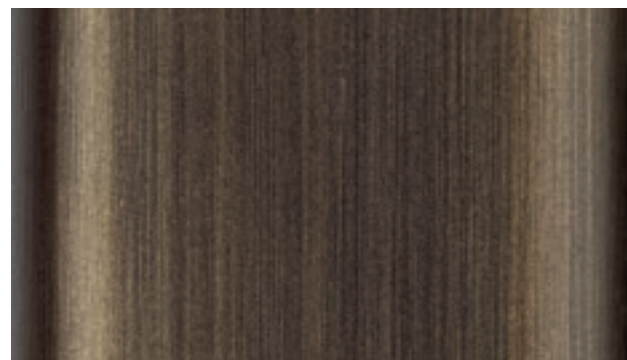
Black Gold BG



Deep Anthracite DA



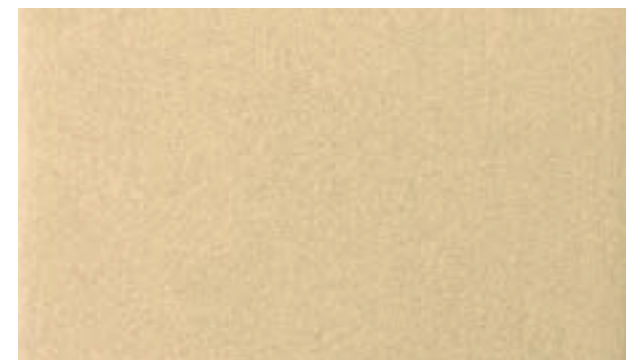
Deep Black DB



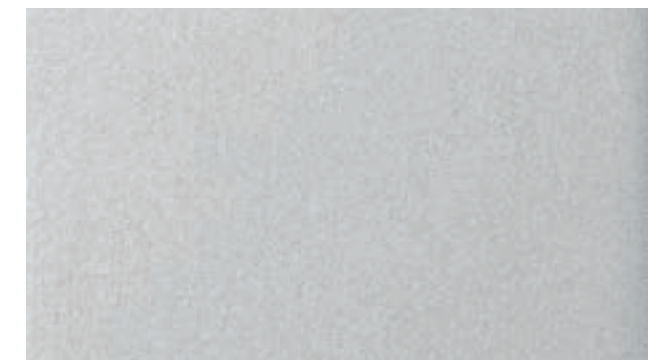
Brown burnished brass BB



Brushed Silver BS



Deep Gold DG



Deep Silver DS

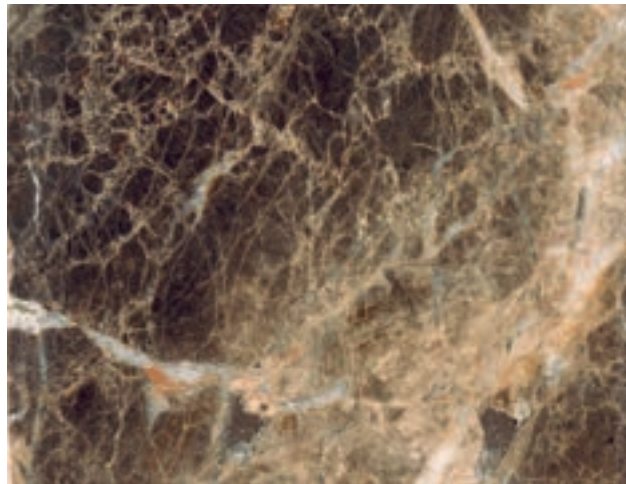
MARBLE COLLECTION



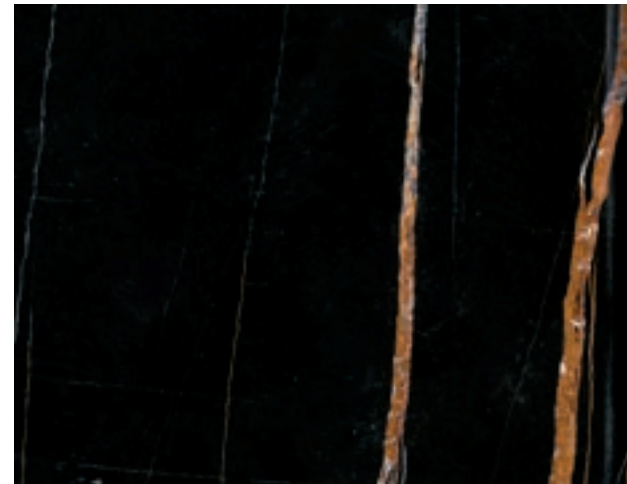
Calacatta Gold CG



Carrara White CW



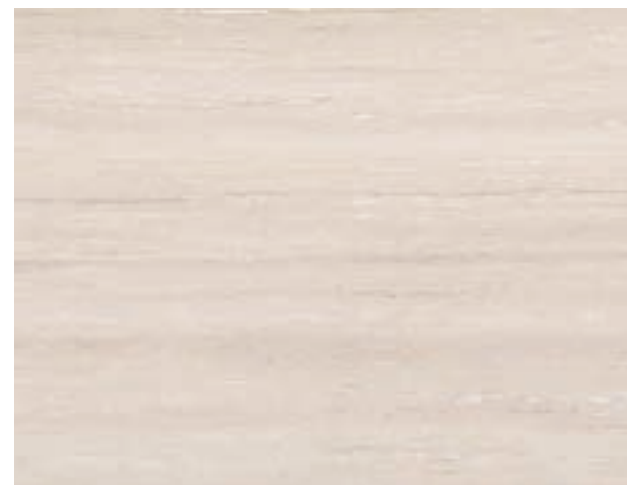
Emperador Dark ED



Sahara Noir SN

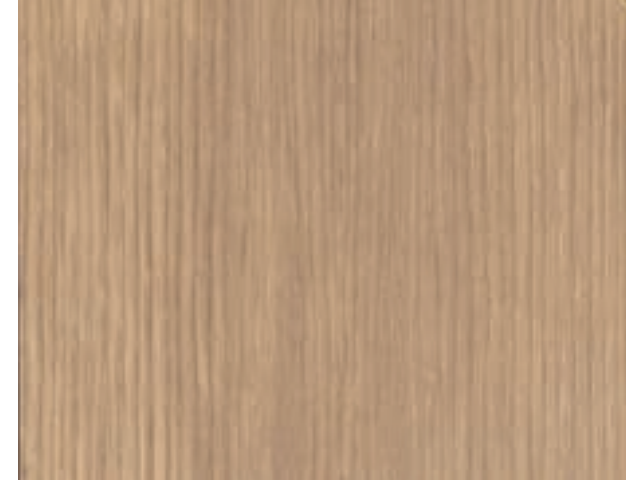


Verde Alpi VA



Travertino TV

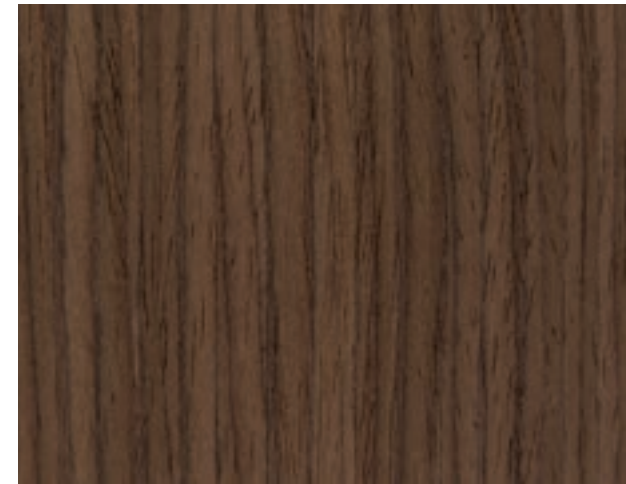
WOODS COLLECTION



Natural Oak



Bolivar



Canaletto Walnut



Mahogany



New Lime



Caleido

CLUNIS



Category
Bouclé

Composition
33%WO-25%PL-25%PC-15%CO-2%PA
Width: 137 cm +/- 3%
Weight: 4935 gr/ml - 682 gr/sqm +/- 5%
Martindale: 40000 cycles +/-

Flame resistance
BS 5852-1 (1979) CIGARETTE
BS 5852:2006 CIGARETTE
BS 5852-1 (1979) MATCH
BS 5852:2006 MATCH
CAL TB 117:2013

Washing Instructions



002



002



006



028



026



000



029



030



020



025

SOFI

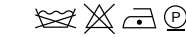


Category
Cotton and viscose frisé

Composition
46%CO-47%VI-7%LI
Width: 850 gr/ml - 607 gr/sqm +/- 5%
Weight: 850 gr/ml - 607 gr/sqm +/- 5%
Martindale: 27000 cycles +/- 10%

Flame resistance
BS 5852:2006 CIGARETTE
BS 5852-1 (1979) MATCH
BS 5852:2006 MATCH

Washing Instructions



187101



187-101



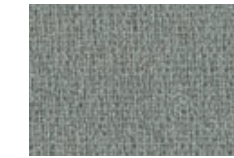
187-000



187-100



187-029

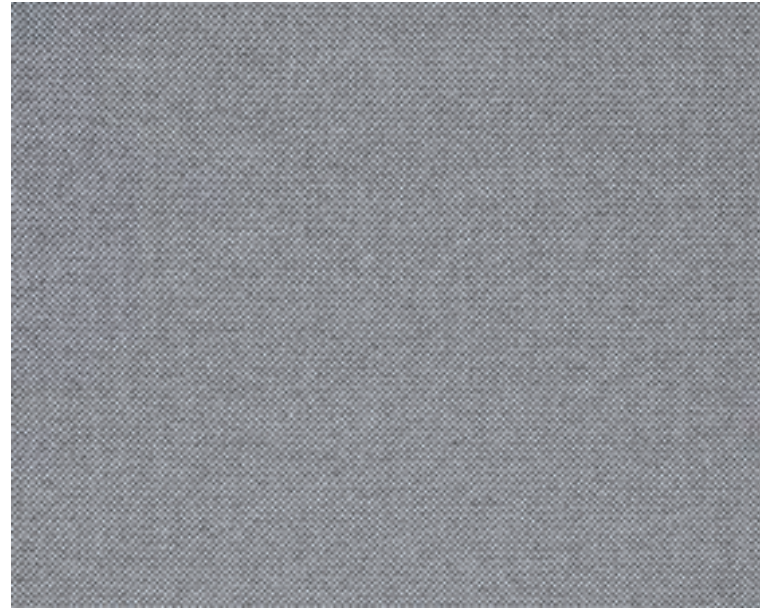


187-090



187-062

REVIVE



0154

Category
Kvadrat upholstery

Composition
100% recycled polyester FR
Width: Approx. 140 cm (Approx. 55")
Weight: 420 g/lin. m (13.55 oz/ly)
Martindale: 60.000
Sustainability: Greenguard Gold, HPD, EPD

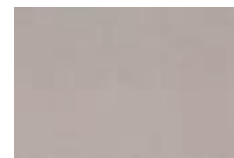
Flame resistance
BS 5852 Crib 5 with treatment, EN 1021-1/2, DIN 4102 B1, IMO FTP Code 2010: Part 8, NF D 60 013 with treatment, Önorm B1/Q1, UNI 9175 1IM, US Cal. Bull. 117-2013



0154



0274



0324



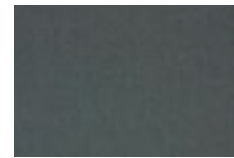
0434



0454



0944



0974

ADAMO & EVA



129 - roccia

Category
Cotton Velvet

Composition
100%CO
Weight: g/ml 630
Width: cm 140 – 55.12 inches
Cfa: Yes
Martindale: 50.000

Washing Instructions



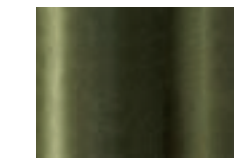
116 - cayenne



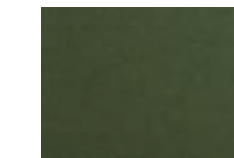
119 - prugna



106 - mirtillo



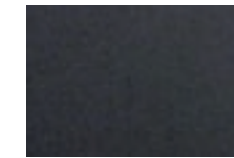
168 - mousse



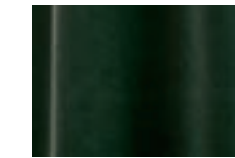
145 - olive



129 - roccia



107 - antracite



169 - cactus



104 - indigo



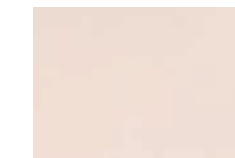
170 - notte



175 - fumo



137 - cenere



178 - ostrica

An exquisite quality of Italian-made cotton velvet that is soft, versatile and hard-wearing. A palette of 13 colours comprising striking, traditional and neutral shades.

TABULARASA

Only for Love chair



Category
Cotton Satin

Composition
100%CO
Weight: g/ml 469
Width: cm 140 – 55.12 inches
Cfa: Yes
Martindale: 30.000

Washing Instructions

161 - malachite



103 - ninfea



161 - malachite



156 - ottanio



rose - 173

BOGARDINE

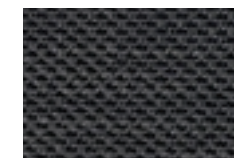


Category
Jacquard

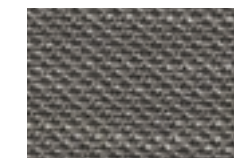
Composition
31%CV 26%CO 24%PAN 10%LI 8%WO 1%PA
Weight: g/ml 960
Width: cm 140 – 55.12 inches
Curtain, Upholstery For Medium/Hard Use
Cfa: Yes
Martindale: 40.000

Washing Instructions

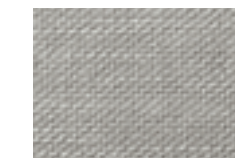
003 - perla



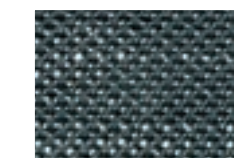
001 - quasinero



002 - taupe



003 - perla



008 - ottanio

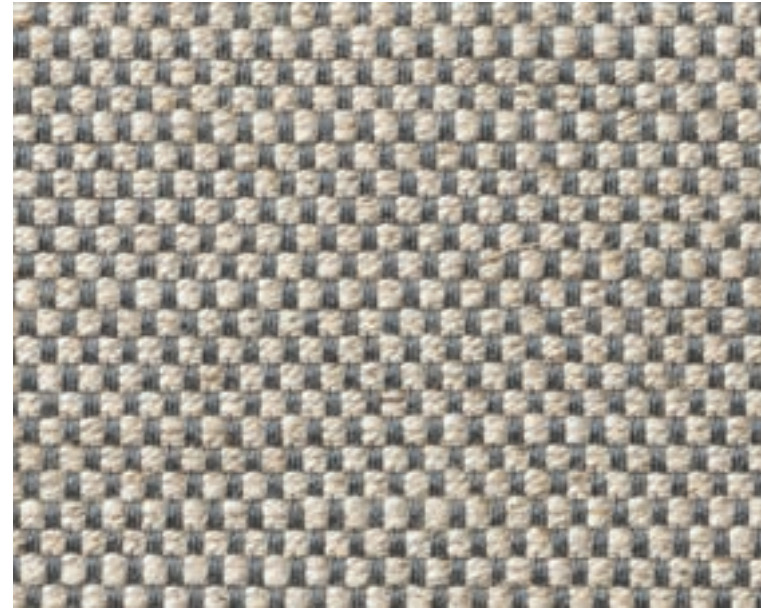


009 - bianco

An elegantly modern cotton satin whose sheen enhances an extraordinary colour palette. Versatile and hardwearing, it provides the basis for infinite possibilities of fabric coordination, also using the Babà trimmings collection.

Yarns of different types and thicknesses create a textural weave and confer a slight matelassé effect to the surface. Soft and consistent to the hand, hardwearing and ideal for heavy duty seating.

SINEQUANON

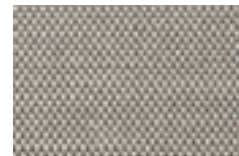


Category
Linen and Viscose fabric

Composition
60%CV 16%LI 13%CO 6%PES 5%PAN
Weight: g/ml 663
Width: cm 140 – 55.12 inches
Cfa: Yes
Martindale: 35.000

Washing Instructions

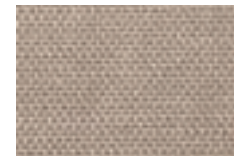
01 - argento



01 - argento



02 - taupe



05 - stone



25 - cappuccino



07 - perla



37 - caffè arabica

Panama weave with slightly shot yarns. Even here the Dedar offer extends with the linen and viscose cloth, which is durable, bright, boasts a rich texture (Flair, Fifty Fifty, Chambray, Aut Aut, Arbus). A special, careful blend of linen and viscose and a new construction which enables a reduction of the textile weight whilst guaranteeing the aesthetic quality, usage and durability, and also offering good value. This textile, just like the others in this range, feature a waterrepellent treatment which offers specific protection from liquids and oils.

CLAY



Category
Upholstery

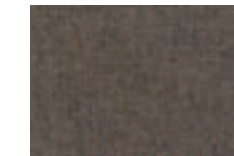
Composition
76% Linen, 21% Cotton, 3% Polyester
Pattern: Solid
Weight: 770 g/lin.m
Width: 140 cm
Durability: 45.000 Martindale
Pilling: 4
Lightfastness: 5

Washing Instructions

0010



002



004



005



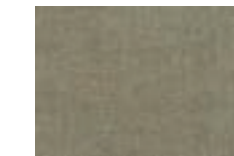
009



0010



0013

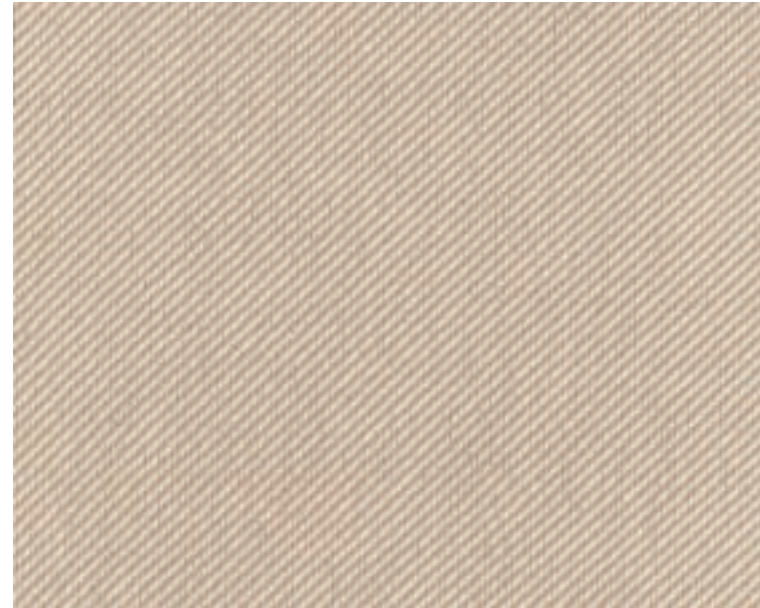


0015

Bringing together both natural beauty and a sense of finesse, the creative team have mixed colours of yarn in warp and weft to create an elegant yet casual fabric. The result has a unique structured surface that adds and extra dimension to any interior design scheme. With a back cloth that gives extra stability, Clay is perfect for upholstering furniture.

The colours are inspired by the designer's love of both art and interiors and include cool shades of cement, blue, and salvia but also the natural shades of wood and clay.

TWILLTWENTY



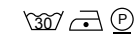
Category

Twill

Composition

100%PI Flame Retardant
 Width: 140 Cm
 Weight: 630 Gr
 Made in: Italy
 Martindale: 80000
 Pilling: 4/5 (Scale 1-5)
 Colour Fastness To Light: 7 (Scale 1-8)
 Colour Fastness To Crocking: 4/5 Dry 4/5 Wet (Scale 1-5)
 Colour Fastness To Chlorinated Water: 4/5 (Scale 1-5)
 Colour Fastness To Sea Water: 4/5 (Scale 1-5)
 Tensile Strength: Class A (En 14465)
 Tear Strength: Class A (En 14465)
 Seam Slippage: Class A (En 14465)
 Other Certifications: Yarns Certified Oeko-Tex
 Fire Certifications: France M1 Nfp902-503-504-505,
 Germany B1 Din 4102-1, Imo 8 Upholstery, Italia Classe
 1 Tendaggi, Uk Cigarette Source 0, Uk Contract Curtains
 Bs5867, Uk Contract Upholstery Bs7176, U.s.a. Cal Tb117

Washing Instructions



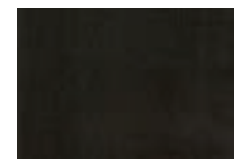
4 - cipria



4 - cipria



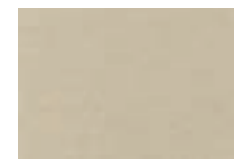
20 - ruggine



7 - nero



6 - grigio



3 - corda



1 - bianco



9 - pesco



12 - pervinca



17 - blue



19 - bordeaux



13 - acqua



16 - teal blue

SAFIRE



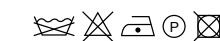
Category

Boucle and chenille

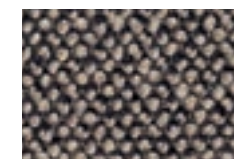
Composition

43% Viscose, 17% Acrylic, 15% New wool, 9% Cotton, 8%
 Linen, 8% Polyester
 Weight: 1010 g/lin.m
 Width: 140 cm
 Durability: 44 000 Martindale
 Pilling: 3
 Lightfastness: 6
 Sustainability: Greenguard Certification

Washing Instructions



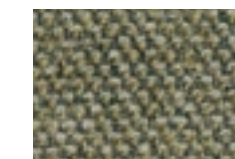
003



003



004



005



008



010



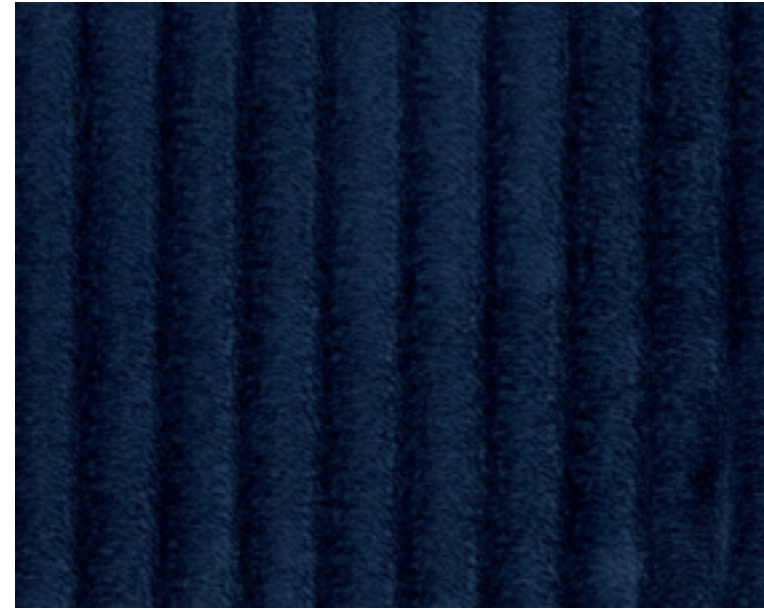
015



017

A classic twill. A particularly thick thread/yarn highlights the “Z” diagonal motif which makes the fabric more dynamic. The shiny and matt threads enhance the effect of the light on the surface.

CORD



CA1419/053

Category
Cotton Velvet

Composition
100% cotton, groundmaterial: 100% cotton
Width: 140 cm
Durability: 100 000 Martindale

Washing Instructions



CA1419/053



CA1419/084



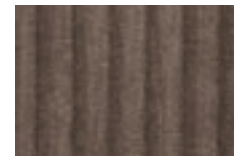
CA1419/070



CA1419/071



CA1419/091



CA1419/020



CA1419/032



CA1419/064



CA1419/051



CA1419/037



CA1419/093



CA1419/081

BONSAI



020

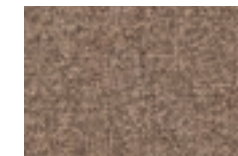
Category
Upholstery

Composition
48% PAN 29% CO 23% PES
Weight: 140 cm
Width: 905 per linear meter/g
Width: 646 per square meter/g
Durability: 50 000 Martindale
Seam slippage: <6mm
Pilling (DIN EN ISO 12945-2)
Rub fastness: Dry 4-5 Wet 4-5
Lightfastness: for medium colours 5

Flame retardant
BS 5852: Part 1: 1979
Ignition source 0 (Cigarette)

Fabric
Wave Dobby

Washing Instructions



020



021



093



072



041



032



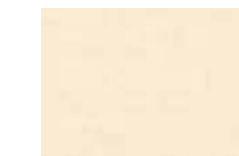
082



051



050



070

TIVANO



Category
European cattle

Composition
Raw material: European cattle
Tanning: Mineral
Protection: Semianiline
Description: Waxed hand buffed
Thickness: 1,2 - 1,4 mm
Average size: 5,0 m²

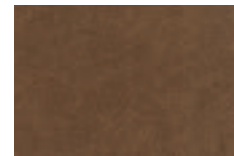
Dry finishing locking	EN ISO 11644	Gn.a. N/cm
Tear resistance	EN ISO 3377-1	G20 N/cm
Flexing endurance	EN ISO 5402	G20.000 runs
Dry rub colour fastness	EN ISO 11640	150 runs
		G4 grey scale
Wet rub colour fastness	EN ISO 11640	25 runs
		G4 grey scale
Light fastness	EN ISO 105-B	G4 blue scale
Heat colour fastness	EN ISO 17228	G4 grey scale

Avoid exposure to direct sunlight and heat sources
Clean frequently and gently with a soft cloth
Remove stains with a damp cloth or with a specific cleaning product

3611 - corda



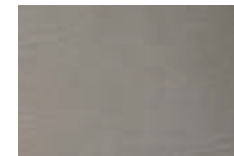
3611 - corda



3606 - tabacco



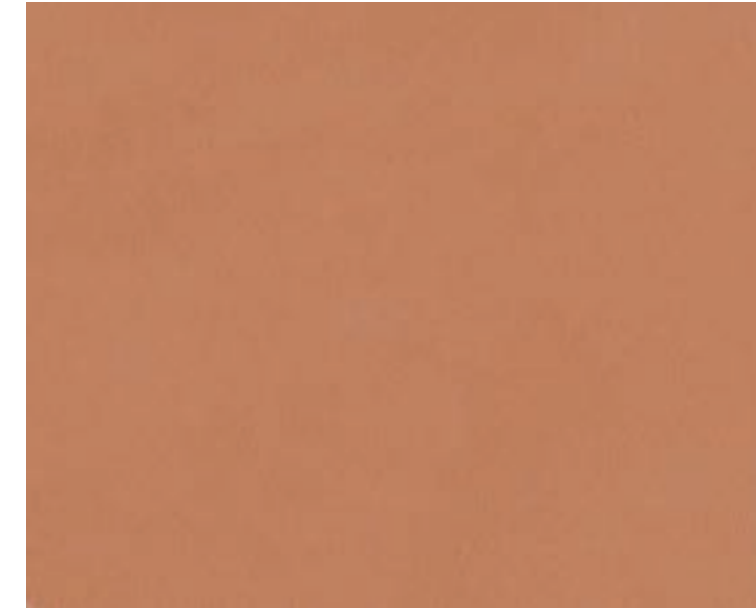
3603 - militare



3612 - fumo

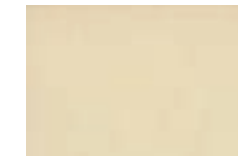
CUOIO LEATHER

Only for Frame sofa and armchair



Composition
Bovine of European origin in Nabuk finishing, natural grain.
Average thickness 1.8/2.0 mm. Chrome tannage. Aniline dyed with pigmented finish
The possible presence of any imperfections testify the authenticity and the natural look of pure cuoio leather.

naturale



avorio



bianco



grigio



naturale



nero



nocciola



rosso bulgaro



sabbia



tabacco



testa di moro



tortora



verde fango

KAIROS COLLECTION



Category
Nabuck leather

Composition
Bovine of European origin in Nabuk finishing, natural grain.
The average size of each skin is around 5.0 sqm.
Chrome tannage.
Aniline dyed, finished with high quality oils. Suede look, soft and velvet touch.
The possible presence of any imperfections testify the authenticity and the natural look of pure aniline leather.
Average thickness 1,2 - 1,4 mm.

1716 - doeskin



1719 - kangaroo



1716 - doeskin



1714 - lucky



1704 - chocolate forest



1701 - caqui



1711 - cenere



1721 - ematite



1715 - elephant



1710 - plomo



1718 - nude

LINEA COLLECTION



Category
High quality bovine leather with lightly buffed natural grain

Composition
Bovine of European origin, lightly buffed natural grain, finished thickness 0.9 – 1.1 mm.
The average size of each hide is around 4.8 – 5.0 sqm.
Chrome tannage.
Through dyed; finishing with resins and pigments. Article with a pigmented and protective coat, with a soft, waxy feel and semi-matt appearance.

647 - grigio perla



629 - stone



647 - grigio perla



677 - malt



660 - asfalto



675 - new grey



612 - castagna



611 - testa moro



656 - cotto



610 - mogano



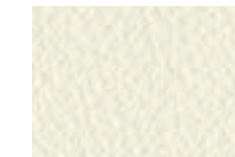
632 - verdone



622 - nero



619 - giallino



634 - gesso



674 - octane

AIDA COLLECTION



Category

Nappa Smooth leather

Composition

Average size 4.5-4.8 sqm, thickness 0.9-1.1 mm.

Chrome tannage.

Bovine leather with smooth aspect, aniline finished with some oils and waxes, produced on European bull.

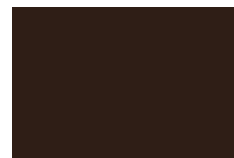
Aniline dyed, finished with high quality oils. Soft article with a slight two tones effect, emotional touch.

The possible presence of any imperfections and color variations are typical for this type of leather as they testify the authenticity and the natural look of pure aniline leather.

Daino



Daino



Coffee



Tan



Saddle



Blackberry



Spruce



Nocturne



Mud



Grey



Sand

TECHNICAL SPECIFICATONS & GENERAL INDEX

LEISURE

Seating System

Structure

Back and seat cushions in polyurethane rubber by mould of different densities with internal metal support

Cushions

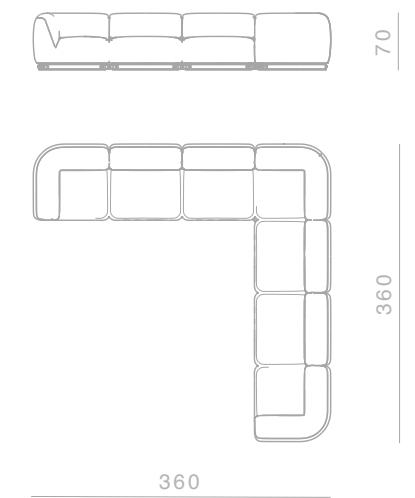
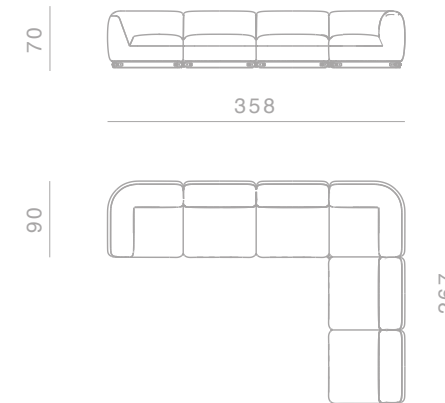
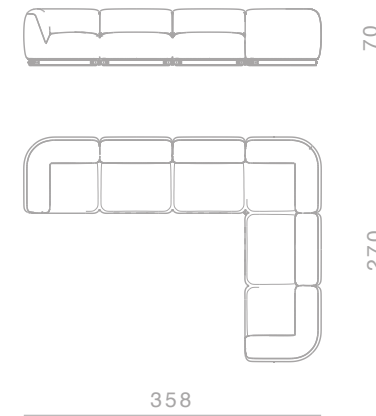
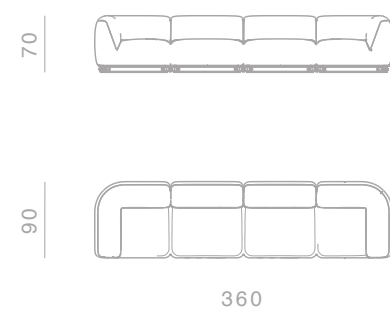
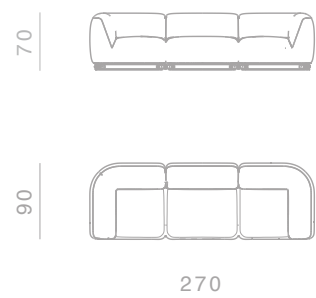
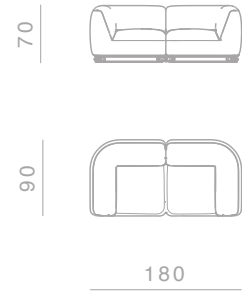
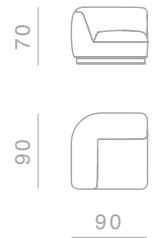
Rubber by mould of different densities with a quilted goose down in cotton light

Covers

Covers are not removable

Base

Hooking system in brass die casted in-house in Ghidini1961 and natural leather



BRIDGE

Seating System

Structure

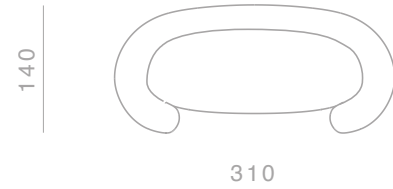
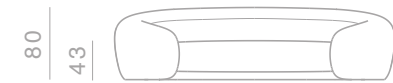
Polyurethane rubber by mould of different densities with internal metal support.

Cushions

Back cushions in polyurethane rubber by mould of different densities.
Seat cushions in polyurethane rubber of different densities.

Covers

Covers are not removable



SHAKER

Seating System

Structure

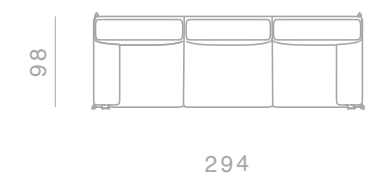
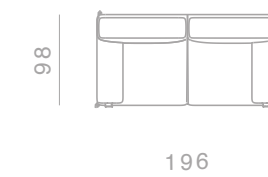
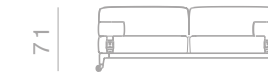
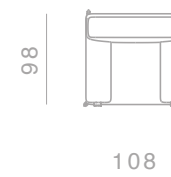
Base in painted and strapped metal. Backrest in rubber in different densities.

Cushions

Back and seat cushions in polyurethane rubber of different densities. Lateral cushions are blocked with natural leather belt with brass buckle.

Base

Shaker sofa is based on aluminum structure die casted in-house at Ghidini1961.



ELEPHANT

Seating System

Structure

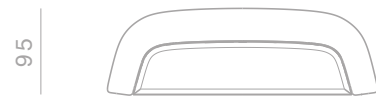
Polyurethane rubber by mould of different densities with internal metal support.

Cushions

Back cushions in polyurethane rubber by mould of different densities.
Seat cushions in polyurethane rubber of different densities.

Covers

Covers are not removable



300

125

OPERA

Seating System

Structure

Base in plywood panel and polyurethane rubber of different densities

Cushions

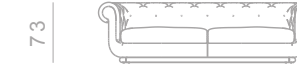
Perimetral cushions in high grammage on wood structure.
Seat cushions in polyurethane rubber of different densities.
Back cushions covered with a quilted goose down in cotton light

Covers

Seat and back cushions cover are removable for both fabric and leather versions

Base

The Opera sofa and armchair are based on aluminium structure composed by round profile and feet die casted in house at Ghidini1961



263

116

TARANTINO

Seating System

Structure

Aluminum legs fixed on internal metal frame, aluminum side support

Cushions

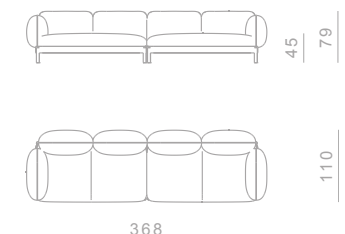
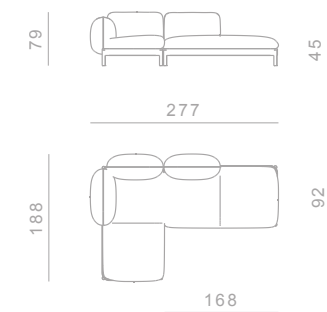
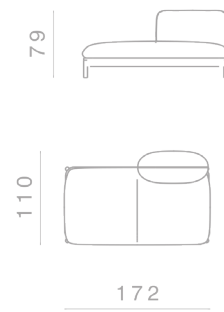
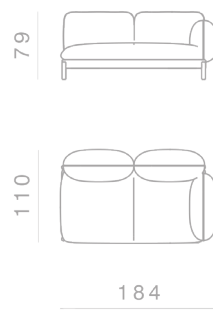
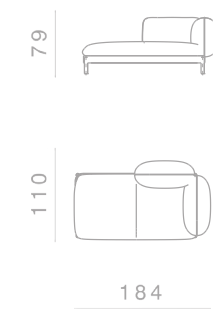
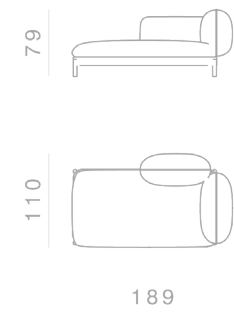
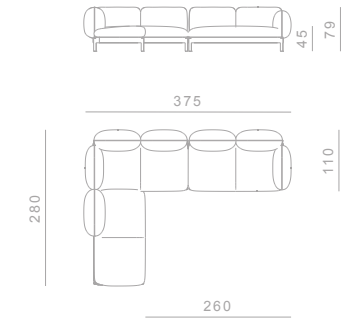
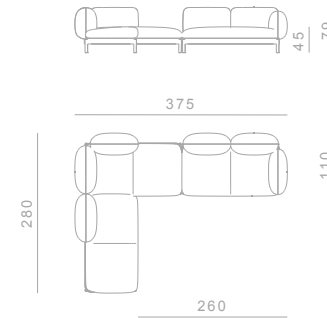
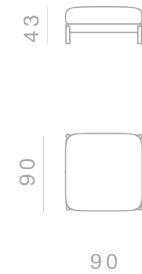
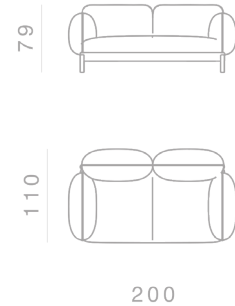
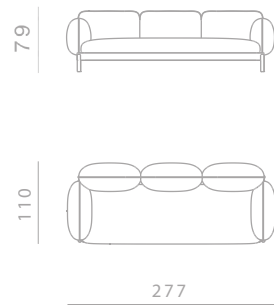
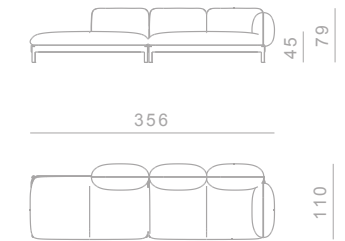
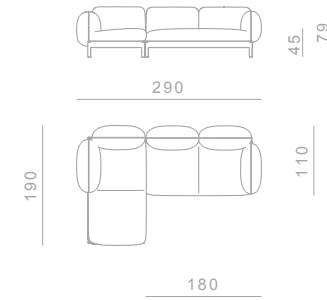
Back cushions in high grammage wadding with internal rubber insert, covered with a quilted goose down in cotton lining. Seat cushions in polyurethane rubber of different densities covered with a quilted goose down in cotton lining

Covers

Covers are not removable

Base

The sofa, armchair and ottoman are made of Italian aluminum, bent in-house at Ghidini1961. Polished manually, and lacquered with a transparent finish to guarantee a long lasting durability



MILO

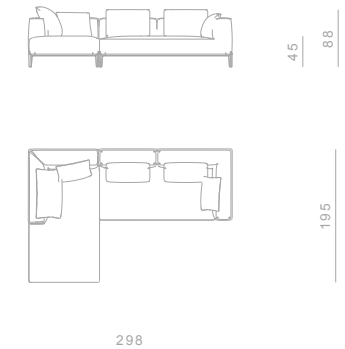
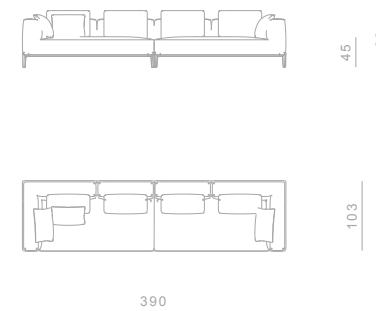
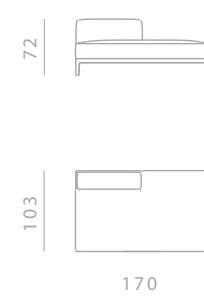
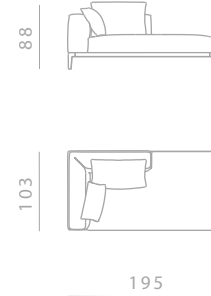
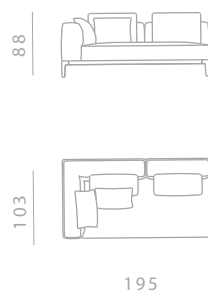
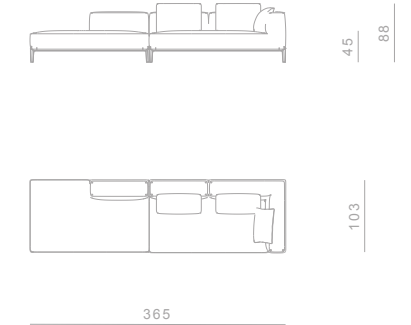
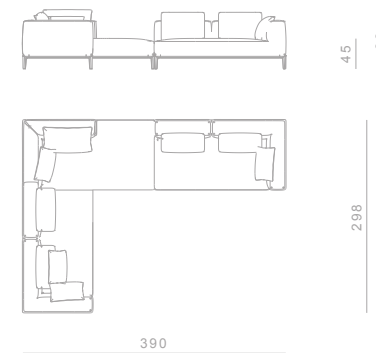
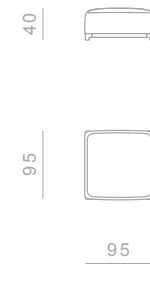
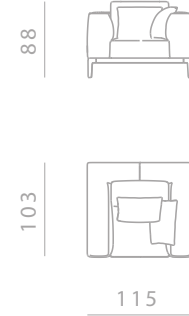
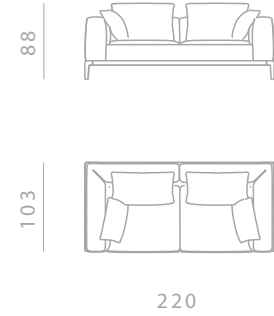
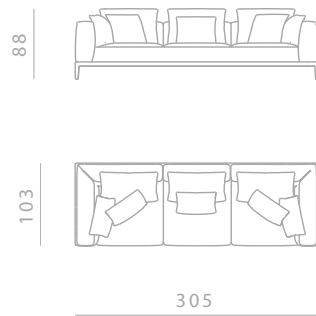
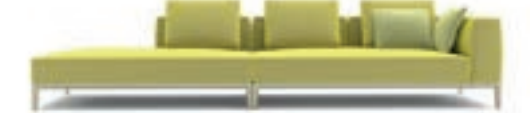
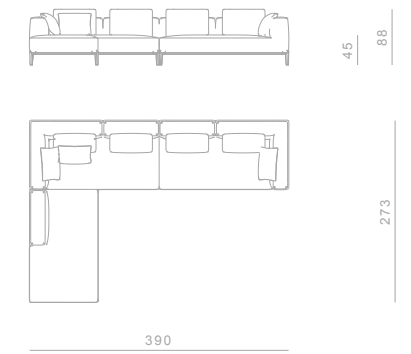
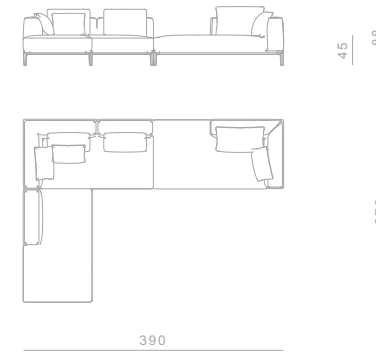
Seating System

Structure
Base in painted strapped metal and plywood panel

Cushions
Perimetral cushions in high grammage on wood structure. Seat cushions in polyurethane rubber of different densities. Back and lateral cushions covered with a quilted goose down in cotton light

Covers
Seat and back cushions cover are removable

Base
All products from Milo family are based on aluminium structure with die casted legs in-house Ghidini1961



FRAME

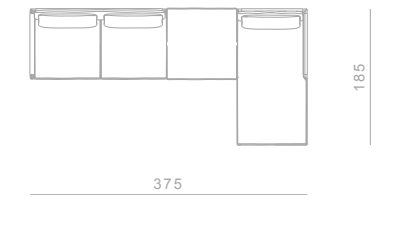
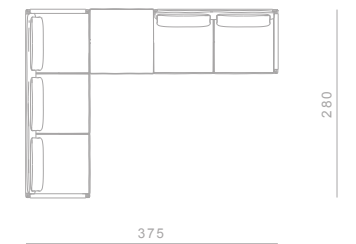
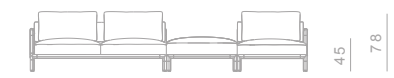
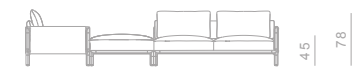
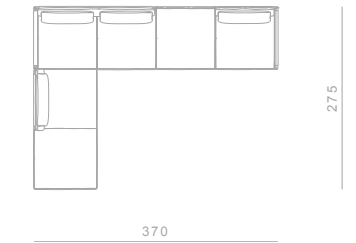
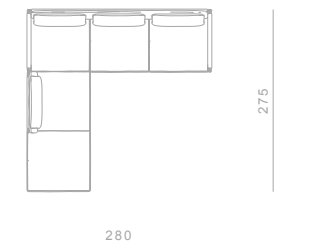
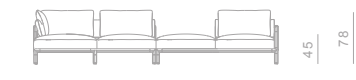
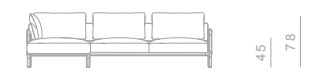
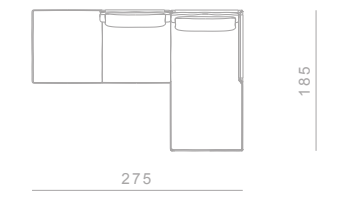
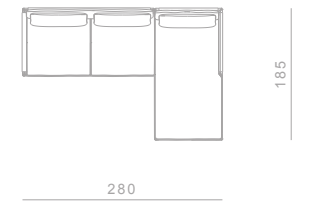
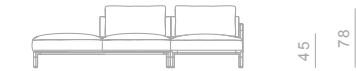
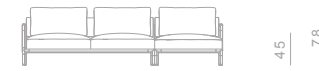
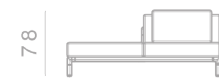
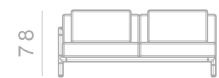
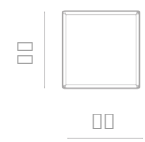
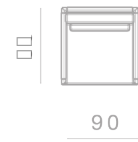
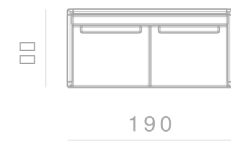
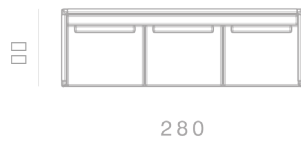
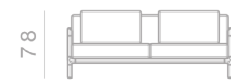
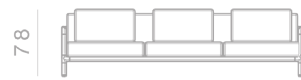
Seating System

Structure
Base in painted and strapped metal. Backrest in rubber in different densities with plywood panel

Cushions
Back cushions in high grammage wadding with internal rubber insert.
Seat cushions in polyurethane rubber of different densities. Side and back sides in natural cuoio leather

Covers
All covers are completely removable for both fabric and leather versions

Base
The sofa and armchair is based on the Frame family of castings. The frame castings are made of Italian aluminium, die casted in-house at Ghidini1961.



BOLD

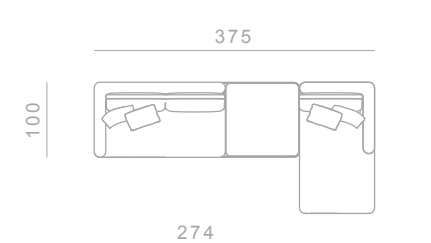
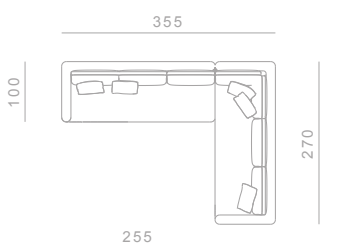
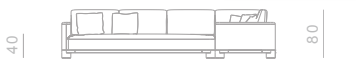
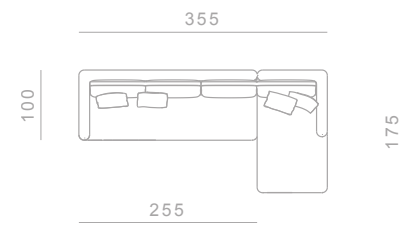
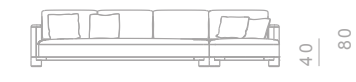
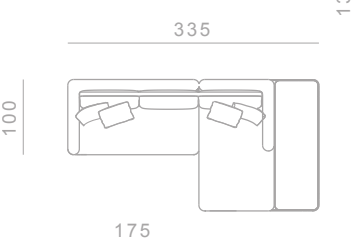
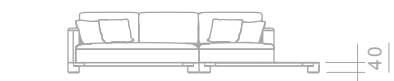
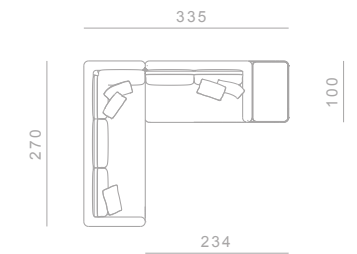
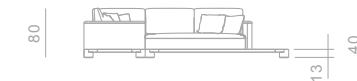
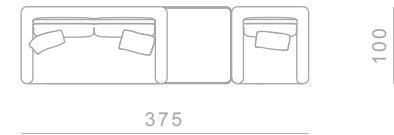
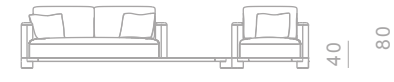
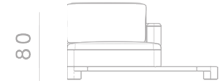
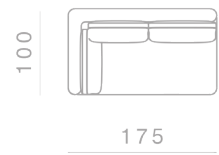
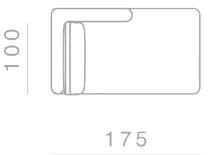
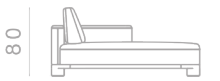
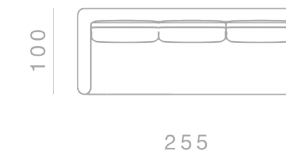
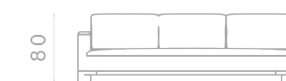
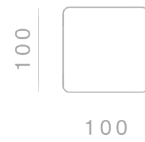
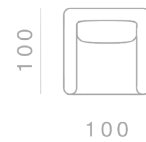
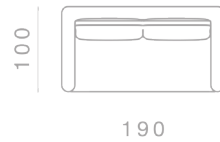
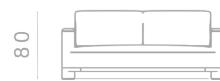
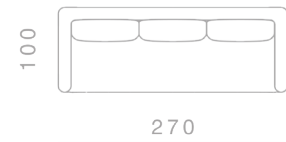
Seating System

Structure
Die casted aluminum on the angular elements and extruded aluminum for the supporting structure on the perimeter. Internal structure in wood with metal supporting frame

Cushions
Back cushions in high grammage wadding with internal rubber insert. Seat cushions in polyurethane rubber of different densities

Covers
Back covers are completely removable for both fabric and leather versions

Base
The sofa, armchair and ottoman are based on the Bold family of castings. The Bold castings are made of Italian aluminum, die casted in-house at Ghidini1961. Polished manually, and lacquered with a transparent finish to guarantee a long lasting durability



ABBRACCI

Seating System

Structure

Base structure in brass plated aluminum bended round tube. Internal structure with metal supporting frame

Cushions

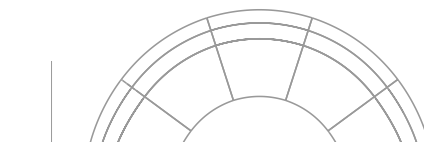
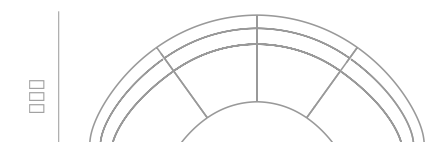
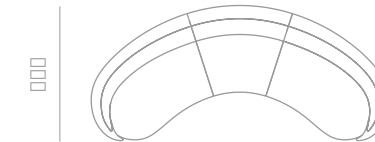
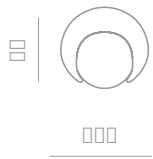
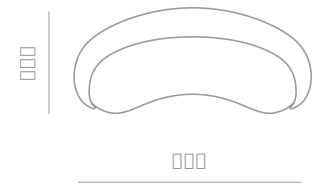
Back cushions in high grammage wadding with internal rubber insert. Seat cushions in polyurethane rubber of different densities

Covers

Covers are not removable

Base

The sofa, armchair and ottoman are made of Italian aluminum, bent in-house at Ghidini1961. Polished manually, and lacquered with a transparent finish to guarantee a long lasting durability



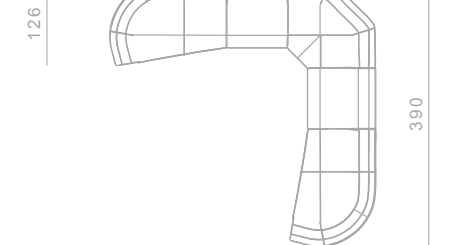
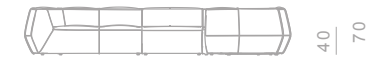
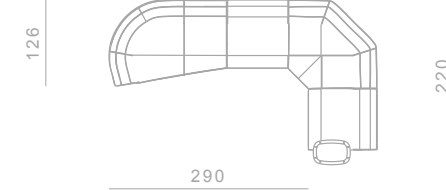
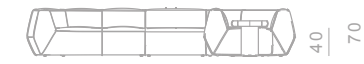
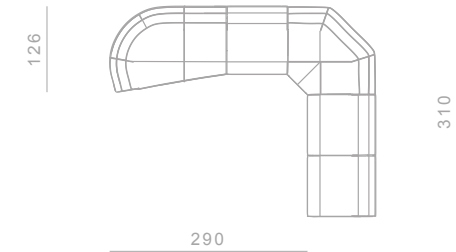
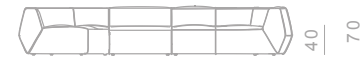
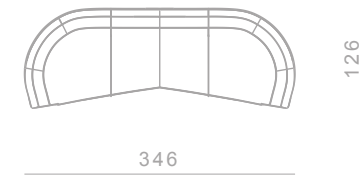
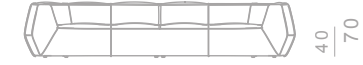
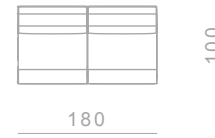
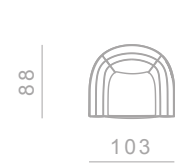
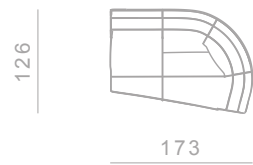
INFINITO

Seating System

Structure
Base in plywood panel and polyurethane rubber of different densities

Cushions
Perimetral cushions in high grammage on wood structure. Seat cushions in polyurethane rubber of different densities. Seat cushions covered with a quilted goose down in cotton light

Covers
All products from Infinito family are covered by leather and are not removable



DODO

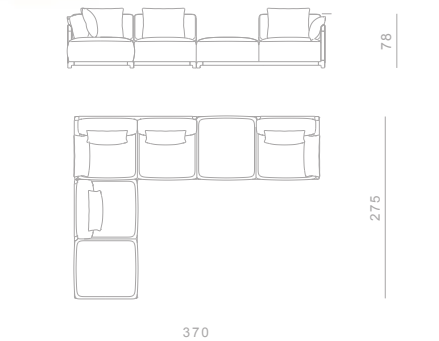
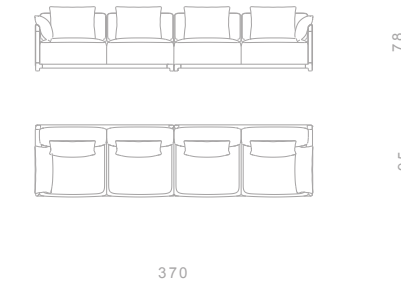
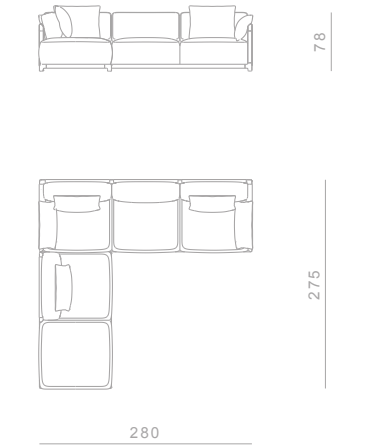
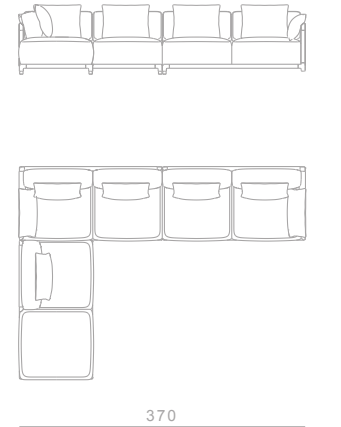
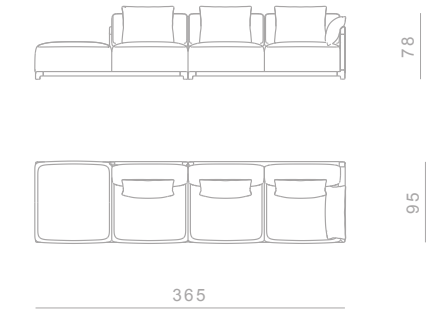
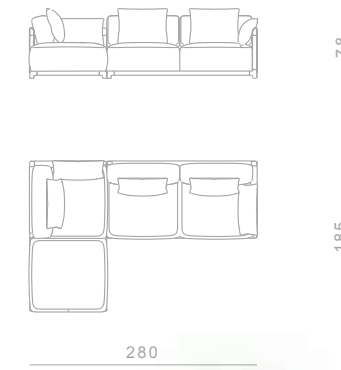
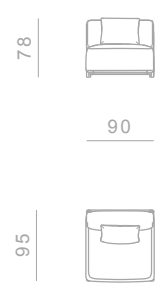
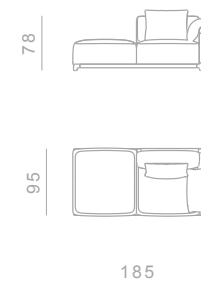
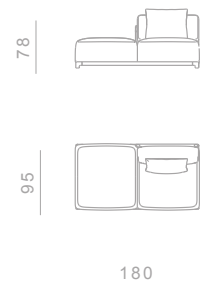
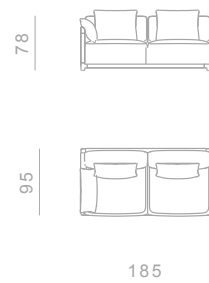
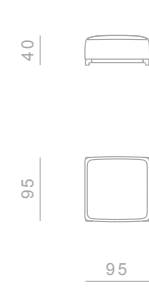
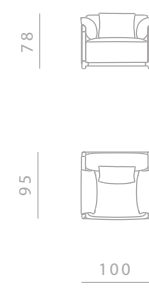
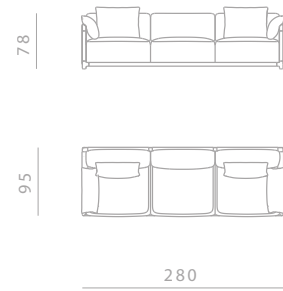
Seating System

Structure
Base in painted strapped metal and plywood panel

Cushions
Back cushions in high grammage wadding internal rubber insert. Seat cushions in polyurethane rubber of different densities. Side and back sides in natural cuoio leather covered. Back and lateral cushions covered with a quilted goose down in cotton light

Covers
Seat and back cushions cover are removable

Base
The sofa and armchair is based on the Dodo family of castings. The castings are made on Italian aluminium, die casted in house Ghidini1961



KATANA

Seating System

Structure

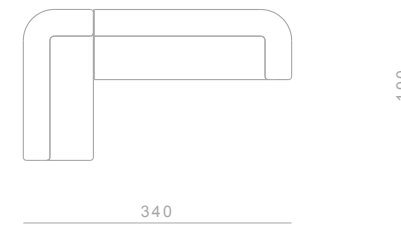
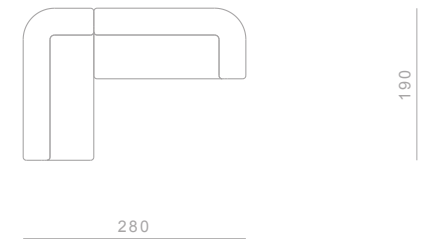
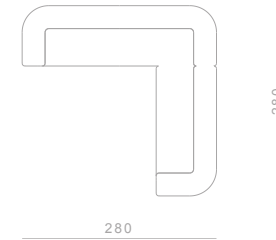
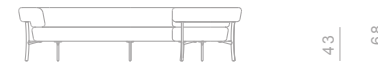
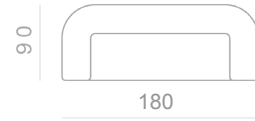
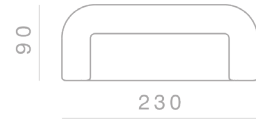
Belted seat and multilayered, covered in polyurethane foam at different densities covered with quilted goose down in cotton lining.
Backrest structure made of plywood covered with polyurethane rubber of different densities, all covered with a quilted goose down in cotton lining

Covers

The sofa covers are not removable

Base

The sofa and armchair is based on the Katana leg.
The Katana leg is made of Italian brass, die casted in-house at Ghidini1961. Polished manually, and lacquered with transparent finish to guarantee a longlasting durability



PORTOFINO

Seating System

Structure

Base in plywood panel and polyurethane rubber of different densities

Cushions

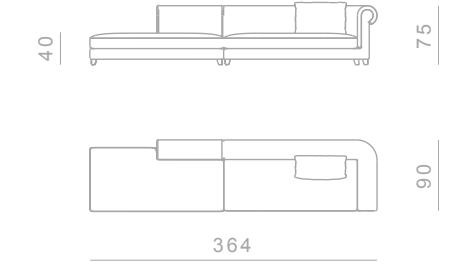
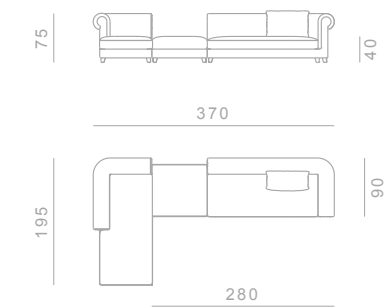
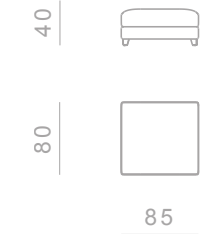
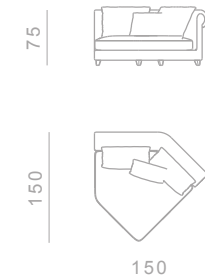
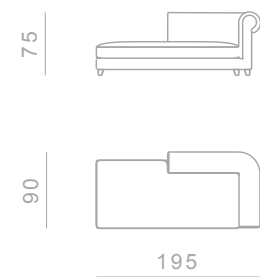
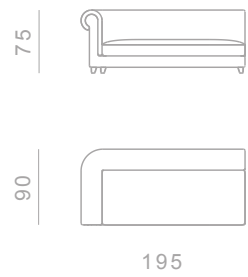
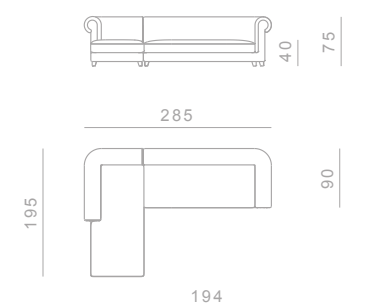
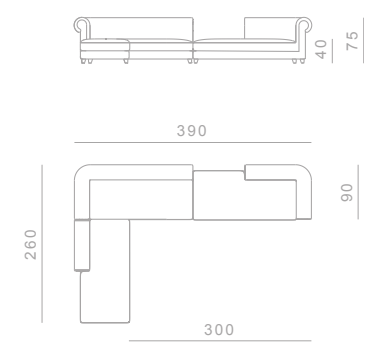
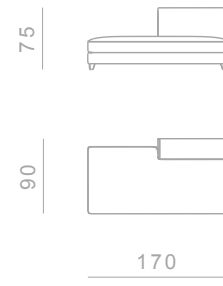
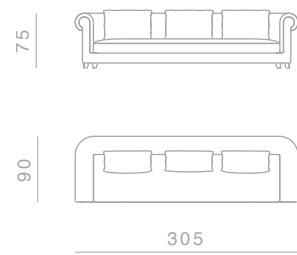
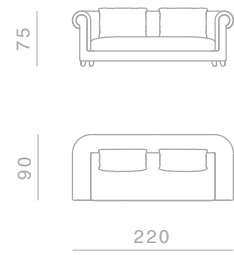
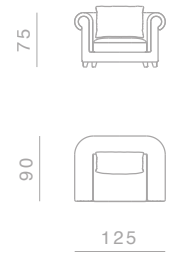
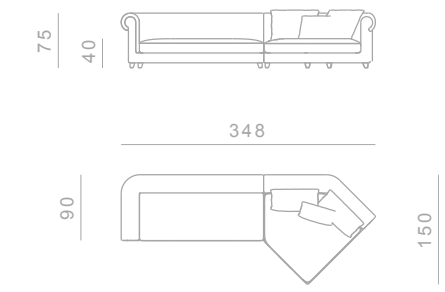
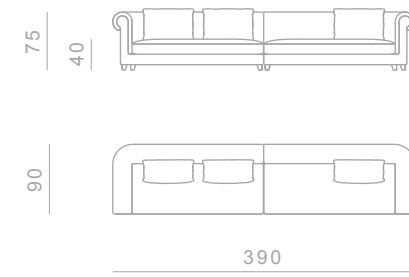
Perimetral cushions in high grammage on wood structure. Seat cushions in polyurethane rubber of different densities. Back cushions covered with a quilted goose down in cotton light

Covers

Seat and back cushions cover are removable for both fabric and leather versions

Base

All products from Portofino family are based on aluminium feet die casted in house at Ghidini1961



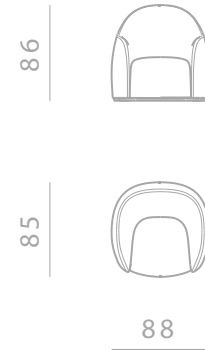
SWEET

Seating System

Structure
Base in plywood panel and polyurethane rubber of different densities



Cushions
Cushions in polyurethane rubber by mould of different densities



Covers
Covers are not removable



Base
Sweet is based on aluminium ring cutted by water jet



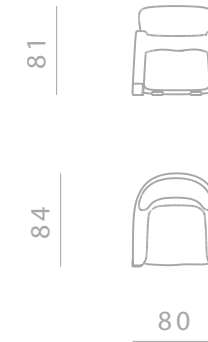
BUCKET

Seating System

Structure
Base in plywood panel and polyurethane rubber of different densities



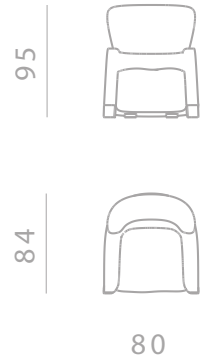
Cushions
Seat cushion in polyurethane rubber covered with a quilted goose down in cotton light. Back cushion in polyurethane rubber by mould of different densities



Covers
Covers are not removable



Base
Bucket is based on aluminium feet die casted in house at Ghidini1961



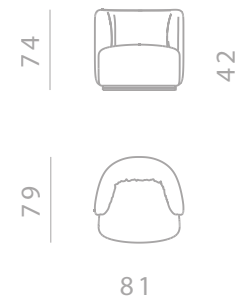
SIPARIO

Seating System

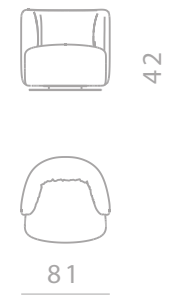
Structure
Base in plywood panel and polyurethane rubber of different densities



Cushions
Cushions in polyurethane rubber by mould of different densities



Covers
Covers are not removable



Base
Sipario is based on aluminium ring cutted by water jet

TRIPLE WAVES

Rugs

Material

New Zealand wool and Tencel

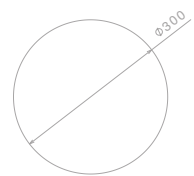
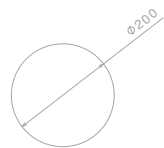
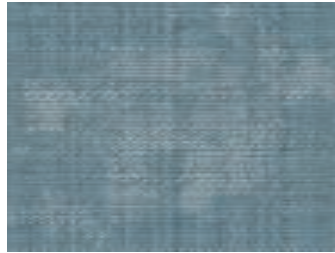
Technique

Hand tufted

The fleece can then be finished by hand to different thicknesses with the use of scissors.

The fleece can be held as a “velvet” or a “loop” (small bouclé).

At the end of the weaving process, natural latex is poured on the back of the carpet, which gives greater compactness to the structure of the carpet. Finally, a cotton cloth is applied on the back as a finishing touch.



CONNECT

Rugs

Material

New Zealand wool and Tencel

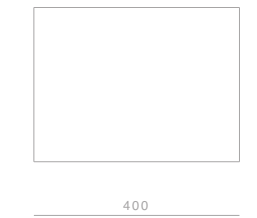
Technique

Hand tufted

The fleece can then be finished by hand to different thicknesses with the use of scissors.

The fleece can be held as a “velvet” or a “loop” (small bouclé).

At the end of the weaving process, natural latex is poured on the back of the carpet, which gives greater compactness to the structure of the carpet. Finally, a cotton cloth is applied on the back as a finishing touch.



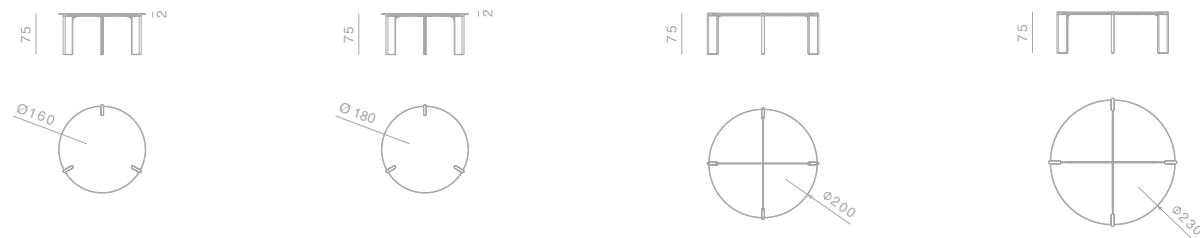
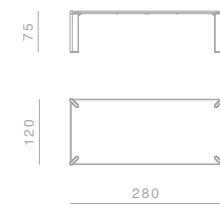
OTTANTA

Tables

Structure
 Aluminum die casted elements on the top of each leg. Each element is die casted in house at Ghidini1961.

Top Finishes
 20mm marble, 20mm wood

Legs
 50mm marble, 50mm wood

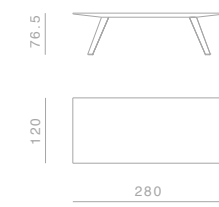
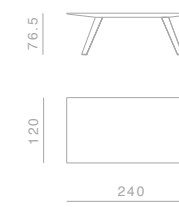
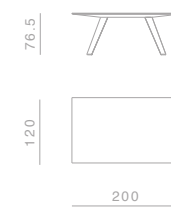


LOCUST

Tables

Top Finishes
 75mm wood with slim edge profile

Legs
 Solid wood

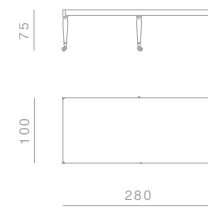
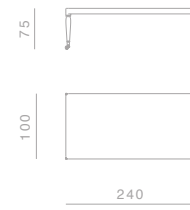
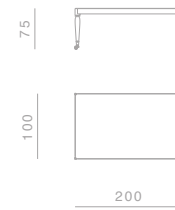


SHAKER

Tables

Top Finishes
100mm wood

Legs
Turned wood with terminal wheel
in brass machined in-house at
Ghidini1961.



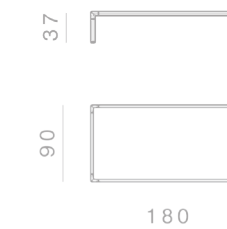
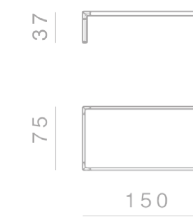
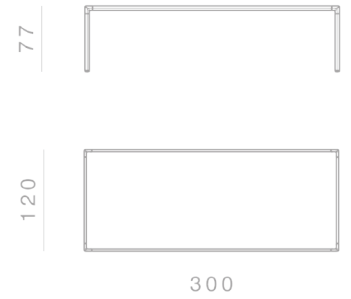
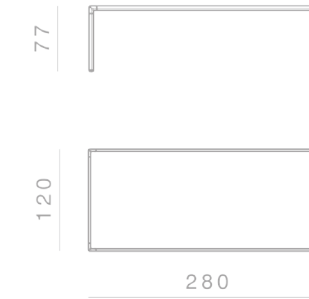
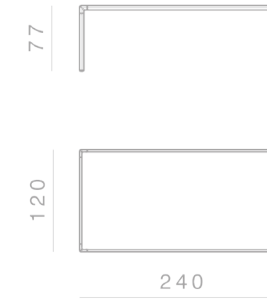
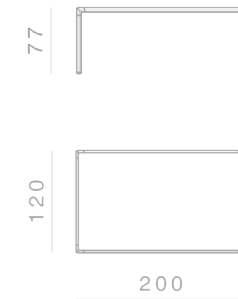
FRAME

Tables

Structure
Die casted aluminium on the
angular elements and tubular
aluminium for the supporting
structure on the perimeter

DINING TABLES Top Finishes
20mm marble, 30mm wood

COFFEE TABLES Top Finishes
20mm marble, 20mm wood, 20mm
cuoio leather



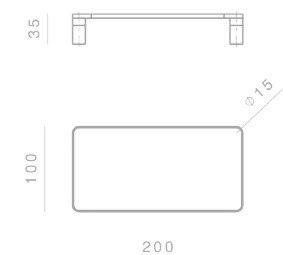
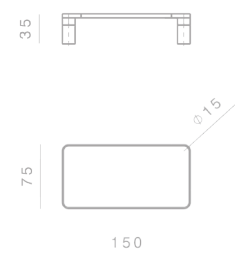
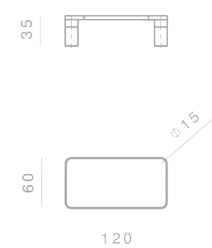
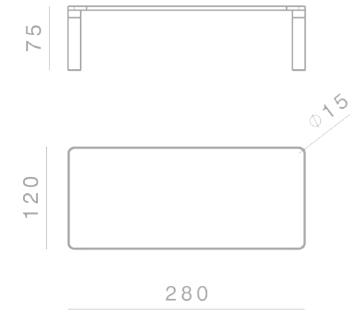
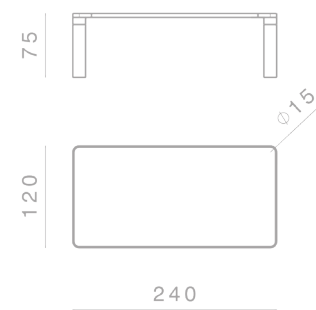
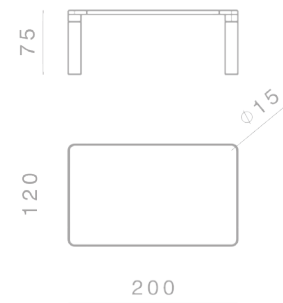
Custom finishes available upon request.

BOLD

Tables

Structure
Die casted aluminum on the angular elements and extruded aluminum for the supporting structure on the perimeter
Legs: marble, wood

Top Finishes
20mm marble, 20mm wood



Custom finishes available upon request.

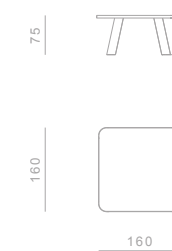
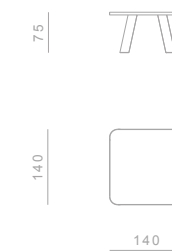
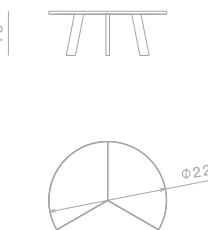
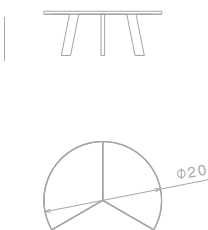
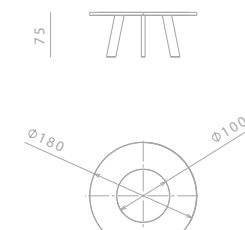
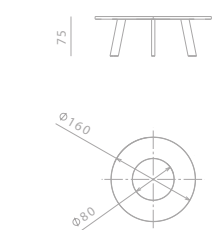
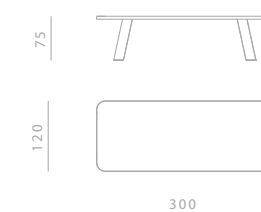
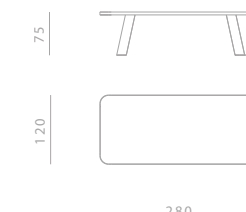
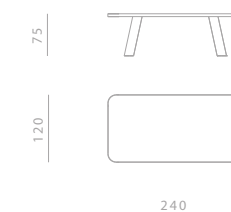
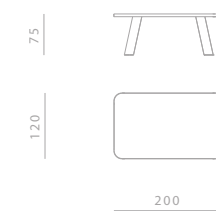
NATIVE

Tables

Structure
Supporting 30mm wood panel for the top and for fixing legs. Perimetral aluminium, curved for the round versions and extruded with die casted corners in house at Ghidini1961 for the rectangular versions

Top Finishes
20mm wood, 20mm marble (total thickness with the supporting panel 50mm)

Legs
Solid wood, marble



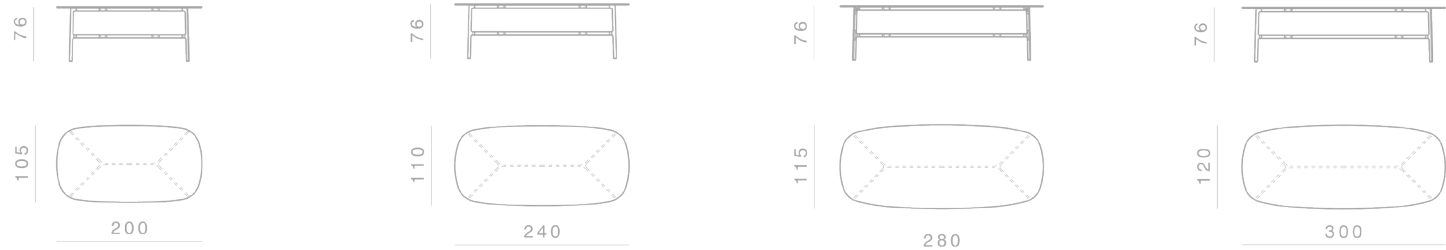
Custom finishes available upon request.

COAST

Tables

Structure
Die casted brass on the angular elements and tubular aluminium for the supporting structure

Top Finishes
20mm marble, 30mm wood



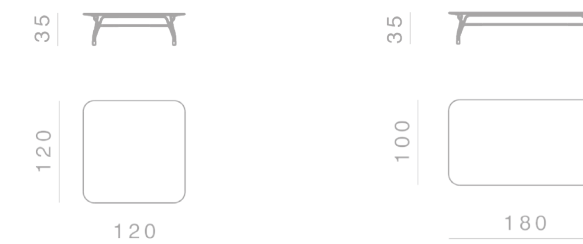
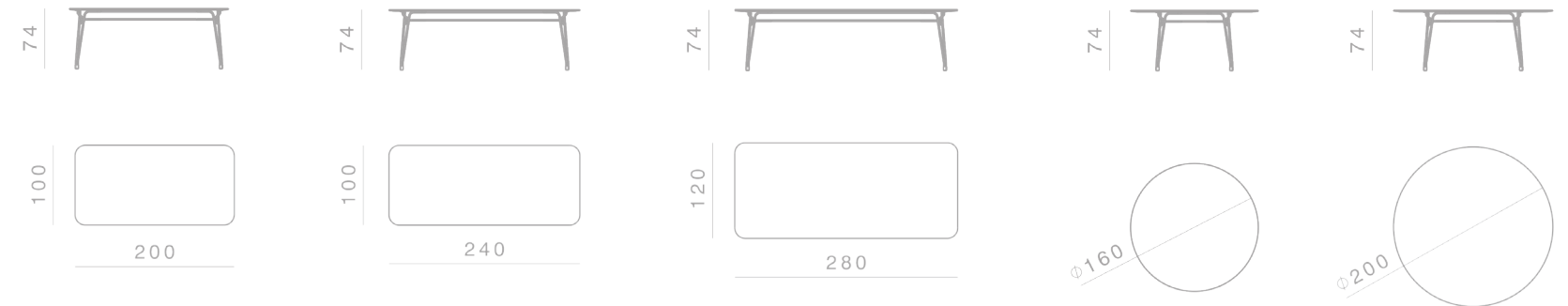
BOTANY

Tables

DINING TABLES:
Structure
Gilded metal rod with diameter 18mm supporting the structure, with 4 supporting elements for the table top. Satin gold finish

COFFEE TABLES:
Structure
Gilded metal rod with diameter 18mm supporting the structure, with 4 supporting elements for the table top. Satin gold finish

Top Finishes
12mm glass, 30mm wood



LEGS

Modular System

DINING TABLES:

Structure

Solid brass legs lacquered diameter 35mm

COFFEE TABLES:

Structure

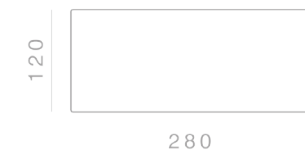
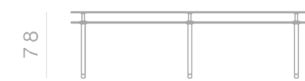
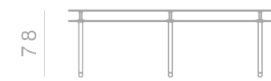
Solid brass legs lacquered diameter 45mm

Top Finishes

12mm glass, 20mm marble

Top Finishes

12mm glass, 30mm wood



TARANTINO

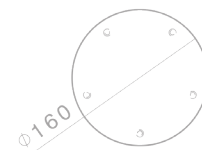
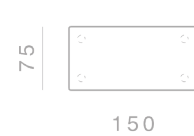
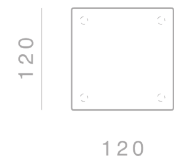
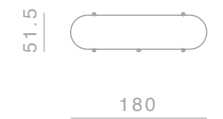
Cabinets

Structure

Extruded aluminum for the supporting structure and for the handles. Wood veneered container.

Interior

Interior shelving and internal bases covered in wood. Opening with internal push system.



Custom finishes available upon request.

FRAME

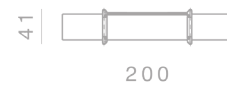
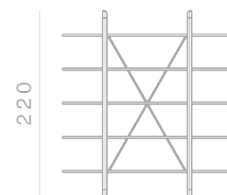
Cabinets & Bookshelves

Structure

33x60mm oval tubular in aluminium with die-cast corners. Galvanic finish in polished brass, or satin brass and painted burnished brass. Dark Tulip Wood veneered melamine container, matte acrylic polish

Interior:

interior shelving and internal bases covered in natural leather. Opening with internal push system



BOLD

Cabinets

Structure

Die casted aluminum on the angular elements and extruded aluminum for the supporting structure on the perimeter. Wood veneered container

Interior

Interior shelving and internal bases covered in wood. Opening with internal push system



Custom finishes available upon request.

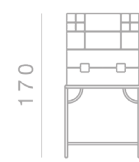
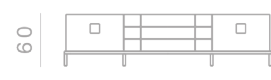
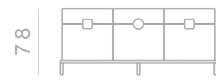
ZUAN

Cabinets

Structure
30x30mm squared tubular in satin brass and lacquered Mahogany feather veneered melamine container, matte

polished with filling bottom
Visible shelving in satin brass.
Top in Green Alps marble.
Handles in satin brass

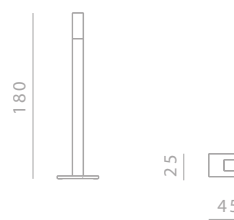
Interior
interior shelving and internal bases covered in natural leather



GIOTTO

Sculptural Light

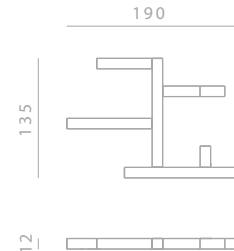
Floor lamp in gold plated stainless steel and plexiglass terminal.



INCROCIO

Shelving

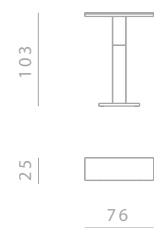
Shelves in gold plated stainless steel and plexiglass. Hanging frame on to support photos, small pots, small books, knick-knacks.



PORTO

Console

Console in gold plated stainless steel and handmade finish on the upper part. Top featuring a light source to light up vases, books, sculptures.



Katana Armchair
design Paolo Rizzatto
Armchair



Katana Bench
design Paolo Rizzatto
Bench



Bold Chair
design Elisa Giovannoni
Chair



Coast Chair
design Branch Creative
Chair



Leporello Jr.
design Paolo Rizzatto
Stool



Love Chair
design Nika Zupanc
Chair



Miami Chair
design Nika Zupanc
Chair



Miami Table
design Nika Zupanc
Desk



Can Can
design Johanna Grawunder
Table Lamp



Can Can
design Johanna Grawunder
Floor Lamp



Can Can
design Johanna Grawunder
Suspension Lamp



Can Can
design Johanna Grawunder
Suspension Lamp



Jackfruit Lamp
design Campana Brothers
Table Lamp



Jackfruit Lamp
design Campana Brothers
Table Lamp



Jackfruit Lamp
design Campana Brothers
Table Lamp



Flamingo Lamp
design Nika Zupanc
Reading Lamp



Factory Lamp
design Elisa Giovannoni
Suspension Lamp ø450



Factory Lamp
design Elisa Giovannoni
Suspension Lamp ø630



Factory Lamp
design Elisa Giovannoni
Suspension Lamp ø780



Sfere Double
design Paolo Rizzatto
Suspension Lamp



Flamingo Lamp
design Nika Zupanc
Table Lamp



Mio
design Aldo Cibic
Table Lamp



Bio
design Aldo Cibic
Table Lamp



Trio
design Aldo Cibic
Table Lamp



Factory Lamp
design Elisa Giovannoni
Suspension Lamp ø450



Factory Lamp
design Elisa Giovannoni
Suspension Lamp ø630



Factory Lamp
design Elisa Giovannoni
Suspension Lamp ø780



Sfere Single
design Paolo Rizzatto
Suspension Lamp



Dusk Dawn
design Branch Creative
Suspension Lamp



Dusk Dawn
design Branch Creative
Table Lamp



Dusk Dawn
design Branch Creative
Reading Lamp



Dusk Dawn
design Branch Creative
Floor Lamp



Indipendant Cylinder
design Richard Hutten
Suspension Lamp



Indipendant Cone
design Richard Hutten
Suspension Lamp



Indipendant Round
design Richard Hutten
Suspension Lamp



Frying Pan Mirror
design Studio Job
Mirror



Bullet Lamp
design Studio Job
Table Lamp



Bullet Lamp
design Studio Job
Table Lamp



One on One
design Branch Creative
Table Lamp



One on One
design Branch Creative
Table Lamp



Indipendant Cylinder
design Richard Hutten
Suspension Lamp



Indipendant Cone
design Richard Hutten
Suspension Lamp



Indipendant Round
design Richard Hutten
Suspension Lamp



Frying Pan Mirror
design Studio Job
Mirror



Gioiello Round Mirror
design Nika Zupanc
Mirror



Gioiello Rectangular Mirror
design Nika Zupanc
Mirror



Gioiello Free Standing Mirror
design Nika Zupanc
Mirror



Gioiello Trapezoid Mirror
design Nika Zupanc
Mirror



Fan
design Setsu & Shinobu Ito
Mirror



Da Vinci Table
design Richard Hutten
Coffee tables



Da Vinci Table
design Richard Hutten
Coffee tables



Ninfee
design Alessandro Mendini
Coffee tables



Gioiello Drop Mirror
design Nika Zupanc
Mirror



Gioiello Oval Mirror
design Nika Zupanc
Mirror



Gioiello Octagonal Mirror
design Nika Zupanc
Mirror



Opera Rectangular Tables
design Richard Hutten
Tables



Opera Round Tables
design Richard Hutten
Tables Ø28



Opera Round Tables
design Richard Hutten
Tables Ø35



Opera Squared Tables
design Richard Hutten
Tables



Kaleidos Large
design Campana Brothers
Mirror



Kaleidos Small
design Campana Brothers
Mirror



Portrait With Birdie
design Elisa Giovannoni
Mirror



Portrait With Little Vase
design Elisa Giovannoni
Mirror



Flowers
design Stefano Giovannoni
Coffee tables



Flowers
design Stefano Giovannoni
Coffee tables



Flowers
design Stefano Giovannoni
Coffee tables



Sunset Mirror Small
design Nika Zupanc
Mirror



Sunset Mirror Small
design Nika Zupanc
Mirror



Sunset Mirror Large
design Nika Zupanc
Mirror



Sunset Mirror Large
design Nika Zupanc
Mirror



Butterfly
design Richard Hutten
Coatrack



Single Butterfly Hook
design Richard Hutten
Coatrack



Butterfly
design Richard Hutten
Coatrack



Single Butterfly Hook
design Richard Hutten
Coatrack



Butler Umbrella Stand
design Richard Hutten
Umbrella stand



Tumbrella Stand
design Richard Hutten
Umbrella stand



Sticks Flower Pot
design Campana Brothers
Flower pot



Sticks Candle Holder
design Campana Brothers
Candle holder



Here
design Studio Job
Ice bucket



Here
design Studio Job
Ice bucket



There (push pin)
design Studio Job
Candlestick



Nowhere (bullet)
design Studio Job
Vase



Jackfruit
design Campana Brothers
Sculptural Vase



Tornado
design Campana Brothers
Sculptural Vase



Jackfruit
design Campana Brothers
Sculptural Vase



Medium bowl
design Andrea Branzi
Bowls



Cylinder bowl
design Andrea Branzi
Bowls



Large bowl
design Andrea Branzi
Bowls



Gil&Luc
design Noè Duchaufour - Lawrance
Vase



Joe&Ema
design Noè Duchaufour - Lawrance
Vase



Ema&Lou
design Noè Duchaufour - Lawrance
Vase



Perished
design Studio Job
Bowls



Perished
design Studio Job
Bowls



Perished
design Studio Job
Bowls



Double O
design Richard Hutten
Ice bucket



Olala Etagere
design Richard Hutten
Etagere



Double O Tray
design Richard Hutten
Tray



Perished
design Studio Job
Napkin holder



Perished
design Studio Job
Tray



Tip Top
design Richard Hutten
Pencil holder, trays, bowls,
Paper basket



Axometry
design Elisa Giovannoni
Trays



Axometry
design Elisa Giovannoni
Trays



Axometry
design Elisa Giovannoni
Trays



Knotted Cherry Small
design Nika Zupanc
Box



Knotted Cherry Medium
design Nika Zupanc
Box



Florida Bowl
design Nika Zupanc
Bowl



Florida Bowl
design Nika Zupanc
Bowl



Rabbit
design Stefano Giovannoni
Door stopper



Rabbit
design Stefano Giovannoni
Paperweight



Rabbit
design Stefano Giovannoni
Salt&pepper



Omini
design Stefano Giovannoni
Napkin tray



Omini
design Stefano Giovannoni
Napkin tray



Omini
design Stefano Giovannoni
Serving tray



Omini
design Stefano Giovannoni
Candle holders



Omini
design Stefano Giovannoni
Candle holders



Omini
design Stefano Giovannoni
Candle holders



Omini
design Stefano Giovannoni
Salt&Pepper



Omini
design Stefano Giovannoni
Napkin holders



Omini
design Stefano Giovannoni
Candle holders



Omini Small Bowl
design Stefano Giovannoni
Bowls



Omini Medium Bowl
design Stefano Giovannoni
Bowls



Omini Large Bowl
design Stefano Giovannoni
Bowls



Omini
design Stefano Giovannoni
Candle holders



Omini
design Stefano Giovannoni
Paper clips holder, business cards holder,
scotch holder, pencils tray



Omini
design Stefano Giovannoni
Candle holders

GHIDINI 1961 INICIHÐ

is a trademark of
Ghidini Giuseppe Bosco spa

via Gabriele D'Annunzio 27
25069 Villa Carcina (BS) Italy
T +39 030 8980521
F +39 030 8981588
info@ghidini1961.com

Art Direction

Stefano Giovannoni

Press office

press@ghidini1961.com

Sales office

sales@ghidini1961.com

Photos

Fabrizio Bergamo ppg. 2-3, 14-15, 19, 20-21, 24-25, 26-27, 30, 32-33, 36-37, 38-39, 40-41, 44-45, 46, 48-49, 53, 56-57, 58, 60-61, 62-63, 66, 68, 70-71, 72-73, 76-77, 78, 80-81, 85, 86, 88-89, 92-93, 94-95, 96-97, 100-101, 103, 106-107, 109, 111, 114-115, 116, 117, 118, 122-123, 126, 128, 131, 132, 134, 136-137, 140-141, 142-143, 146-147, 150, 152-153, 156-157, 160-161, 165, 167, 168-169, 172-173, 175, 181, 184-185, 188-189, 192-193, 194-195, 198-199, 203, 204-205, 206-207, 210-211, 212-213, 214-215, 216-217, 218-219, 220, 222-223, 224, 226-227, 228-229, 232-233, 235, 236, 239, 241, 243, 247, 248, 253, 255, 257, 259, 265, 269, 271, 272-273

Other Photos

Cube Photoproduction ppg. 16-17, 18, 22-23, 28-29, 31, 34-35, 42-43, 47, 50-51, 52, 54-55, 59, 64-65, 67, 69, 74-75, 79, 82-83, 84, 87, 90-91, 98-99, 102, 104-105, 108, 110, 112-113, 119, 120-121, 124-125, 127, 129, 130, 133, 135, 138, 139, 144-145, 148-149, 151, 154-155, 158-159, 162-163, 164, 166, 170-171, 174, 176-177, 178-179, 180, 182-183, 186-187, 190-191, 196-197, 200-201, 202, 208-209, 221, 225, 230-231, 234, 237, 238, 240, 242, 244-245, 246, 249, 250-251, 252, 256, 258, 260-261, 262-263, 264, 266-267, 268, 270, 275, 276-277, 278, 279, 284
Tommaso Sartori ppg. 274

Styling

Candida Zanelli, Rosaria Galli, Serenella Parri

Branding

Christoph Radl, Antonella Provasi

Graphic layout and Printing

Intese Grafiche, Montichiari (Bs)

Many Thanks to:

Bang&Olufsen	Mohebban Milano
Carpet Edition	Rosenthal
Dedar	Salvatori
Dilmos Milano	Sambonet
Ph.Fabrizio Bergamo	Society Limonta
Ph.Giuliano Radici	Stile Original Design
Kasthall	Viabizzuno
L'Idea di Amatori M.Luisa	

www.ghidini1961.com