



Professional Rack

42Ux800x1200, Series 6

Description

SRA Solutions server racks are manufactured from 1.9mm zinc annealed mild steel and are finished with a durable powder-coat.

Supplied standard with laser etched front and rear 19" mounting rails, levelling feet, PDU mounting and 150mm cable tray. The SRA solutions server rack is configured to suit any site requirement.

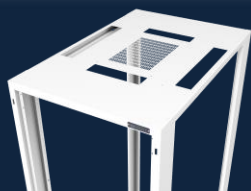
Features

- Fully welded 1.9mm steel frame
- Cable entry
- Internally secured side panels
- Doors open 180 degrees
- Laser etched 19" mounting rails
- Adjustable mount rails, 15mm increments
- 1000kg static load rating

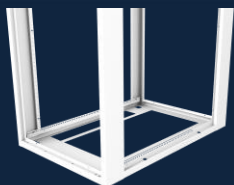


Rack inclusions

Frame Top



Frame Bottom



part id	201000-08-01
colour	mannex white
dimensions	(42U) 2006mmx800mmx1200mm
frame top	vented with cable entry with covers
frame bottom	vented with cable entry with covers
front door	vented single door, 1-pt locking, metal handle with lock
rear door	vented single door, 1-pt locking, metal handle with lock
left side panel	solid side panel
right side panel	solid side panel
accessories	150mm cable tray (x1)
	pdu mounting tray (x2)
	levelling feet (x4)
	19" mounting rails (x4)
	earth kit (x1)