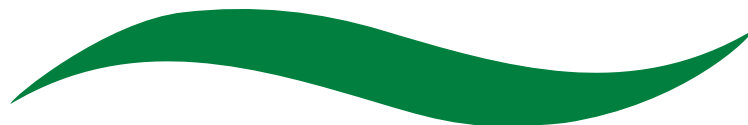




**Garden**<sup>®</sup>  
L E I S U R E  
— *Amalfi Series* —



Discover relaxation with our full range of  
energy efficient Hot Tubs







*Treat your BODY...*  
*Treat your MIND...*  
*Treat your SPIRIT...*

## Home Is A Destination

Home is where we set the body and mind at ease. To relish in the small victories of the day. To recover from the resistance we face throughout our journey.

Home is a place where we find our core. To release stress and tension.

To melt away and find ourselves again.

Home is a safe place to heal from the unexpected injuries we face.

It's where we grow strong again. It's a place where we strengthen and improve ourselves so we can go back into the world ever ready.

Home is where you'll find your Garden Leisure Hot Tub® waiting for you.

With the ancient art of water therapy, you can ease tension and stress, improve circulation, soothe sore muscles, and treat the aches of everyday life.

---

Home Is A Destination .....	2 - 3
Health Benefits & Wellness .....	4 - 5
Garden-334L .....	6 - 7
Garden-642L .....	8 - 9
Garden-742 .....	10 - 11
Garden-680L .....	12 - 13
Garden-780 .....	14 - 15
Garden-696L .....	16 - 17
Energy, Efficiency & Features .....	18 - 19

## Unlock the power of hydrotherapy



Hydrotherapy is the modern version of water therapy, an ancient art that dates back to the hot springs in Greek, Roman, Egyptian, and Japanese culture. People traveled to the legendary hot springs from all over to find relief from a variety of ailments. Now, you can relieve stress, tension, and pains in the comfort of your own home.

### Health Benefits & Wellness

#### Soothe.

Melt away the tense and busy energy of the day. Research shows that the warm water in a hot tub reduces stress and relaxes your body and mind.

- **Decrease Blood Pressure** – Your Garden Leisure Hot Tub® improves circulation and decreases the workload of the heart.
- **Reduce Stress Triggers** – Warm Water Immersion radically diminishes the stress triggers in the central nervous system.



Soothe.



Relax.



Recover.

## Relax.

Hot water has a variety of benefits to the mind at different stages of the day. It increases blood flow in the brain as well as the body so you can enhance creativity and relax for better sleep.

- **Boost Cognitive Activity** – Increased blood flow inside the brain boosts mental stimulation, allowing you to make clear connections for improved memory and creativity.
- **Boost Restful Sleep** – When it's time to unwind at the end of the day, warm water helps create a restful state of mind.

## Recover.

According to physical therapists, hydrotherapy boosts recovery time from aches, pains, and injuries. This makes hot tubs a dream come true for those with arthritis, back pain, diabetes, as well as athletes who are recovering from rigorous workouts.

- **Alleviate Sore Muscles** – Warm water and increased blood flow help to soothe knots and reduce inflammation, making hot tubs a perfect match for those with an active lifestyle.
- **Stimulate Healing** – Warm water allows for oxygen, blood, and nutrients to flow throughout the body, stimulating the natural healing process.



# Garden-334L



3 Seats



34 Jets  
Stainless Steel Trim



(1) Dual  
Speed  
Pump



The **Garden-334L** is designed with the same attention to comfort and detail as the larger models in the range. Nothing is compromised!

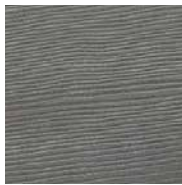


## Garden-334L

<b>Dimensions</b>	65"L x 84"W x 29.5"H
<b>Jet Count</b>	34 Jets with Stainless Steel Trim
<b>Pump</b>	(1) Dual Speed Pump 2.5HP Continuous Duty, 4.0HP Breakdown Torque
<b>Water Capacity</b>	210 US gal
<b>Dry Weight</b>	670 lbs
<b>Filled Weight</b>	2965 lbs
<b>Amperage</b>	230v
<b>Heater</b>	4kw
<b>Filter</b>	35 sq ft
<b>Cabinet</b>	Maintenance Free



### Cabinet Colors



Charcoal



Brown

### Acrylic Colors



Alpine White



Midnight Canyon

### Additional Features Included

- 3 Seats
- Full Foam Insulation
- 3 Laminar Style Water Fountains
- Underwater Multicolor Changing LED Lighting
- Exterior Multicolor Changing LED Cabinet Lighting
- 2 Backlit Pillows
- Intuitive Digital Controls with LCD Panel
- Ozone Water Care System
- Locking Insulated Cover



Midnight Canyon Shell with stainless steel jets

### Warranty

The manufacturer's International Limited Warranty covers the following areas: 5-Year Structure, 2-Year Shell/Surface, 2-Year No Leak Plumbing, 2-Year Component, 2-Year Synthetic Wood Cabinet.

# Garden-642L



6 Seats



42 Jets  
Stainless Steel Trim



(1) Dual  
Speed  
Pump



When you step into the **Garden-642L** you immediately appreciate the space. Relax in the lounge or one of the multi-level seats!





## Garden-642L

<b>Dimensions</b>	84"L x 84"W x 36"H
<b>Jet Count</b>	42 Jets with Stainless Steel Trim
<b>Pump</b>	(1) Dual Speed Pump 2.5HP Continuous Duty, 4.0HP Breakdown Torque
<b>Water Capacity</b>	313 gal
<b>Dry Weight</b>	810 lbs
<b>Filled Weight</b>	4,449 lbs
<b>Amperage</b>	230v
<b>Heater</b>	4kw
<b>Filter</b>	50 sq ft
<b>Cabinet</b>	Maintenance Free



### Cabinet Colors



Charcoal

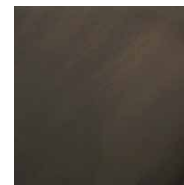


Brown

### Acrylic Colors



Alpine White



Midnight Canyon

### Additional Features Included

- 6 Seats
- Full Foam Insulation
- 3 Laminar Style Water Fountains
- Underwater Multicolor Changing LED Lighting
- Exterior Multicolor Changing LED Lighting
- 3 Backlit Pillows
- Intuitive Digital Controls with LCD Panel
- Ozone Water Care System
- Locking Insulated Cover



*Alpine White Shell with jetted lounge seat*

### Warranty

The manufacturer's International Limited Warranty covers the following areas: 5-Year Structure, 2-Year Shell/Surface, 2-Year No Leak Plumbing, 2-Year Component, 2-Year Synthetic Wood Cabinet.

# Garden-742



7 Seats



42 Jets  
Stainless Steel Trim



(1) Dual  
Speed  
Pump



The **Garden-742** features a generous extra-large footwell and comfortably allows seating for 7 people to relax and enjoy the hydrotherapy!



## Garden-742

<b>Dimensions</b>	84"L x 84"W x 36"H
<b>Jet Count</b>	42 Jets with Stainless Steel Trim
<b>Pump</b>	(1) Dual Speed Pump 2.5HP Continuous Duty, 4.0HP Breakdown Torque
<b>Water Capacity</b>	360 gal
<b>Dry Weight</b>	820 lbs
<b>Filled Weight</b>	5080 lbs
<b>Amperage</b>	230v
<b>Heater</b>	4kw
<b>Filter</b>	50 sq ft
<b>Cabinet</b>	Maintenance Free



### Cabinet Colors



Charcoal

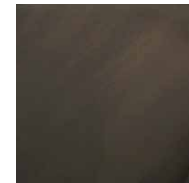


Brown

### Acrylic Colors



Alpine White



Midnight Canyon

### Additional Features Included

- 7 Seats
- Full Foam Insulation
- 3 Laminar Style Water Fountains
- Underwater Multicolor Changing LED Lighting
- Exterior Multicolor Changing LED Cabinet Lighting
- 4 Backlit Pillows
- Intuitive Digital Controls with LCD Panel
- Ozone Water Care System
- Locking Insulated Cover



Alpine White with Charcoal cabinet

### Warranty

The manufacturer's International Limited Warranty covers the following areas: 5-Year Structure, 2-Year Shell/Surface, 2-Year No Leak Plumbing, 2-Year Component, 2-Year Synthetic Wood Cabinet.

# Garden-680L



6 Seats



80 Jets  
Stainless Steel Trim



(1) Dual Speed Pump  
(1) Single Speed Pump



Moving up the range, the **Garden-680L** features additional hydrotherapy and lighting features. The perfect getaway in your own garden!



## Garden-680L

<b>Dimensions</b>	84"L x 84"W x 36"H
<b>Jet Count</b>	80 Jets with Stainless Steel Trim
<b>Pump</b>	(1) Dual Speed Pump (1) Single Speed Pump 2.5HP Continuous Duty, 4.0HP Breakdown Torque
<b>Water Capacity</b>	365 gal
<b>Dry Weight</b>	830 lbs
<b>Filled Weight</b>	4957 lbs
<b>Amperage</b>	230v
<b>Heater</b>	4kw
<b>Filter</b>	50 sq ft
<b>Cabinet</b>	Maintenance Free



### Cabinet Colors

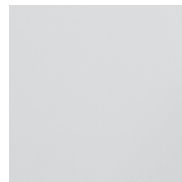


Charcoal

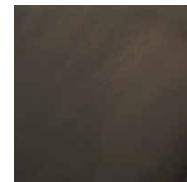


Brown

### Acrylic Colors



Alpine White



Midnight Canyon

### Additional Features Included

- 6 Seats
- Full Foam Insulation
- 3 Laminar Style Water Fountains
- Underwater Multicolor Changing LED Lighting
- Exterior Multicolor Changing LED Cabinet Lighting
- 3 Backlit Pillows
- Intuitive Digital Controls with LCD Panel
- Ozone Water Care System
- Locking Insulated Cover



Backlit pillow on Alpine White Shell

### Warranty

The manufacturer's International Limited Warranty covers the following areas: 5-Year Structure, 2-Year Shell/Surface, 2-Year No Leak Plumbing, 2-Year Component, 2-Year Synthetic Wood Cabinet.

# Garden-780



7 Seats



80 Jets  
Stainless Steel Trim



(1) Dual Speed Pump  
(1) Single Speed Pump



Turn on the air diverters in the **Garden-780** and enjoy a more intense sensation while taking advantage of the spacious corner seats!



# Garden-780

<b>Dimensions</b>	84"L x 84"W x 36"H
<b>Jet Count</b>	80 Jets with Stainless Steel Trim
<b>Pump</b>	(1) Dual Speed Pump (1) Single Speed Pump 2.5HP Continuous Duty, 4.0HP Breakdown Torque
<b>Water Capacity</b>	367 US gal
<b>Dry Weight</b>	830 lbs
<b>Filled Weight</b>	5149 lbs
<b>Amperage</b>	230v
<b>Heater</b>	4kw
<b>Filter</b>	50 sq. ft.
<b>Cabinet</b>	Maintenance Free



### Cabinet Colors



Charcoal

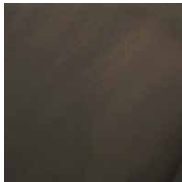


Brown

### Acrylic Colors



Alpine White



Midnight Canyon

### Additional Features Included

- 7 Seats
- Full Foam Insulation
- 3 Laminar Style Water Fountains
- Underwater Multicolor Changing LED Lighting
- Exterior Multicolor Changing LED Cabinet Lighting
- 4 Backlit Pillows
- Intuitive Digital Controls with LCD Panel
- Ozone Water Care System
- Locking Insulated Cover



LED Valve on Alpine White Shell

### Warranty

The manufacturer's International Limited Warranty covers the following areas: 5-Year Structure, 2-Year Shell/Surface, 2-Year No Leak Plumbing, 2-Year Component, 2-Year Synthetic Wood Cabinet.

# Garden-696L



6 Seats



96 Jets  
Stainless Steel Trim



(1) Dual Speed Pump  
(1) Single Speed Pump



The **Garden-696L** has a lounge that will immerse you into a world of stress-free relaxation, taking care of many parts of your body at once. This could be the ultimate place to be at the end of each day!





## Garden-696L

<b>Dimensions</b>	89"L x 89"W x 36"H
<b>Jet Count</b>	96 Jets with Stainless Steel Trim
<b>Pump</b>	(1) Dual Speed Pump (1) Single Speed Pump 2.5HP Continuous Duty, 4.0HP Breakdown Torque
<b>Water Capacity</b>	409 US gal
<b>Dry Weight</b>	932 lbs
<b>Filled Weight</b>	5430 lbs
<b>Amperage</b>	230v
<b>Heater</b>	4kw
<b>Filter</b>	50 sq ft
<b>Cabinet</b>	Maintenance Free



### Cabinet Colors

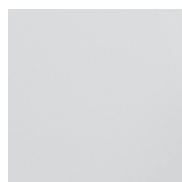


Charcoal

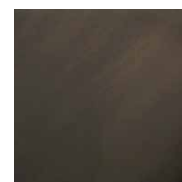


Brown

### Acrylic Colors



Alpine White



Midnight Canyon

### Additional Features Included

- 6 Seats
- Full Foam Insulation
- 3 Laminar Style Water Fountains
- Underwater Multicolor Changing LED Lighting
- Exterior Multicolor Changing LED Cabinet Lighting
- 3 Backlit Pillows
- Intuitive Digital Controls with LCD Panel
- Ozone Water Care System
- Locking Insulated Cover



Alpine White with Charcoal cabinet

### Warranty

The manufacturer's International Limited Warranty covers the following areas: 5-Year Structure, 2-Year Shell/Surface, 2-Year No Leak Plumbing, 2-Year Component, 2-Year Synthetic Wood Cabinet.

# Energy Saving

## Hot Tub Insulation

Every Garden Leisure Hot Tub® features full foam insulation, insulated cabinet panels, and an insulating wrap. The base is fully sealed to prevent potential heat loss and protect against the intrusion of pests. These energy efficient hot tubs offer the ultimate in energy savings with lower operating costs.



Insulated cabinet panel



Insulated wrap with full foam insulation



Fully sealed base

## Insulated Hot Tub Cover

Your Garden Leisure Hot Tub® cover is also designed for maximum energy efficiency as it forms a tight insulated seal and locks in heat, saving you money on operating costs. All covers feature a full width insulated hinge seal that eliminates heat loss through the central seam. Garden Leisure Hot Tub® covers are made from durable, UV inhibiting marine-grade vinyl and are tapered so water runs off. Child-resistant safety locks are standard.



Insulated Hinge Seal



Cover Side Skirt

# Lighting

## Hot Tub Lighting

Every Garden Leisure Hot Tub® features LED lighting for a soft, ambient glow. Pillows are backlit, plus individual underwater lights have been placed to illuminate the water. Cabinets have an external LED light on each corner. Let the system scroll through the color changes on its own or choose your favorite color!



## Hot Tub Accessories

Be sure to check out a copy of our LIFE Essentials brochure of Hot Tub accessories to enhance your enjoyment. Select from entry steps and handrails, cover lifters, maintenance products, water treatment, and aromatherapy products, and much more. We have everything you need!



Life Spa Step



Life Co-Lift LX Side Mount Lift



Life Step & Handrail



*Treat your BODY...*  
*Treat your MIND...*  
*Treat your SPIRIT...*



**HOTTUBS**  
.COM

© 2023 Alliance Trading, Inc. | All rights reserved. | MKG-00-1410

