



APP Guide

• CONTENTS

- APP Download
- How To Connect?
- Official Mode
- Free Touch
- Music Mode
- Long-distance Control
- Social Function

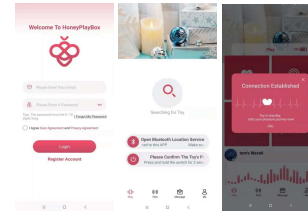
• APP Download

Download the "HoneyPlayBox" app on the **APP Store** or on **Google Play**.
APP is available on:



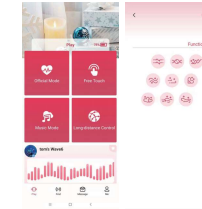
• How To Connect?

1. Keep your Bluetooth on and turn on your toy.
2. Open the app and sign up for all the apps functions.
3. Tap "Searching for Toy", and your toy will be connected to the app and go to the home page automatically.



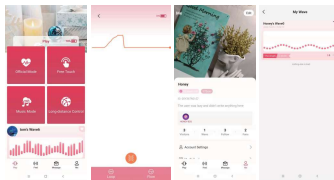
• Official Mode

1. Tap "Official Mode".
2. Tap any of the 9 pre-programmed vibration options to control your toy.



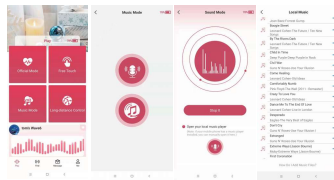
• Free Touch

1. Tap "Free Touch".
2. Hold and slide the **1** icon to control your toy.
3. Waveforms that last over 1 minute will be saved automatically under "Wave" in your "Me" page. You can tap "L" to share your waveform.
4. On the "Play" page, you can see the waveforms published by others, you can download any waveform to apply it to your toy.



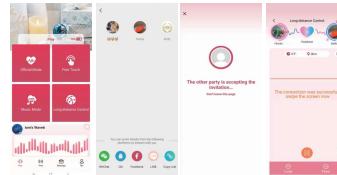
• Music Mode

1. Tap "Music Mode".
2. Tap the **1** icon.
3. The toy will vibrate according to the current environmental decibel change.
4. Tap the **2** icon and allow the app to import your music playlist. Choose a song to play, the toy will vibrate in sync with the song's rhythm.



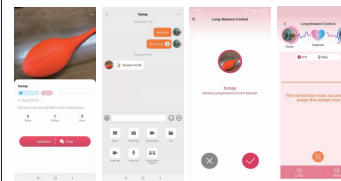
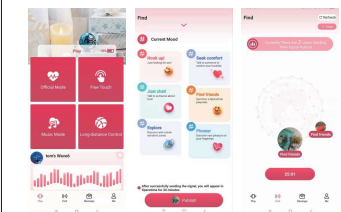
• Long-distance Control

1. Tap "Long-distance Control".
2. Share the link with your friend to invite your friend to control your toy.
3. On your friend's side, they will have to tap the link to enter the interaction page, hold and slide the **1** icon and your friend will be in control of your toy.



• Social Function

1. Tap "Find", then tap "Publish".
2. Select a mood and tap publish, you will appear in the Spacetime for 30 minutes.
3. In the Spacetime area, you can see the signals sent by other users, tap any one of the signals.
4. You can follow and start chat with the user.
5. On "Chat" page, tap "+" to unlock more functionalities. Tap "Long-distance Control" to invite the other party to control your toy.
6. On the other party's device, tap "✓" to accept connection.
7. On the other party's page, hold and slide the **1** icon and the other party will be in control of your toy.



Official Website



Instagram

FOR LATEST UPDATES, FOLLOW US!



@Honey Play Box