



**PROFICIENT.**  
Product Catalog  
September 2016



The Power & Prestige of Proficient

# Table of Contents

<b>Category</b>	<b>Page</b>
Proficient Signature LCR Speakers.....	6
Proficient Signature Whole-House Speakers .....	7
Proficient Signature & Protege Whole-House Ceiling Speakers .....	8
Proficient Signature & Protege LCR Speakers .....	10
Proficient Signature & Protege Inwall Speakers .....	12
Proficient Protege Twin-Tweeter Ceiling Speakers .....	13
Proficient Protege Powered Subwoofers.....	14
Proficient Protege Passive Architectural Subwoofers.....	15
180 Watt Mono Sub Amp with Built-In Crossover.....	15
Outdoor/Indoor Speakers.....	16
Outdoor/Indoor Twin-Tweeter Speakers.....	17
Rock Speakers.....	17
Cabinet Loudspeakers.....	18
Speaker Selectors.....	19
Infrared Kits .....	20
Infrared Components .....	21
Volume Controls .....	22
Pre-Construction Brackets .....	23
Ceiling Tile Brackets.....	24
Back Boxes .....	24
Speaker Cover Plates.....	25
Replacement Speaker Grilles .....	25

# Red Hot Design. White



# Knuckle Performance.

A flagship product line built for the few, not the many. Its creation is free of restrictions that favor bottom line compromise ahead of top line performance. These considerations led us to produce the Proficient Signature Class.

It's Proficient's best of everything, an all star lineup featuring nine flagship speakers from home theater to whole house audio. Each speaker represents an unmatched combination of power, precision and performance.

Proficient Signature class is all about qualities rarely seen working and playing well together in many other speaker brands. Like value and luxury. Innovation and tradition. Exuberance and poise.

The Proficient Signature Class is where sound performance you never thought possible becomes something you just can't live without. Experience the new Signature Class. Just what you would expect from Proficient.

PROFICIENT  
**Signature**<sup>™</sup>

PROFICIENT

# Signature™

## LCR Speakers

### C1075s 10" Ceiling LCR Speaker

One LCR ceiling speaker with woofer and midrange/tweeter bridge fixed at a 15° angle. 10" Kevlar® woofer, 3" pivoting Kevlar® midrange, 1" pivoting aluminum dome tweeter, ±3dB midrange & treble contour switches and 200 watt power handling. Required for installation, the included PCB-C1000 bracket is designed for new construction as well as retrofit applications.

- Replaces C1031 Ceiling LCR Speaker
- Power Handling: 200 Watts
- Frequency Response: 25Hz - 22kHz
- Impedance: 4Ω
- Sensitivity: 94dB 1W/1m
- Includes Thin-Bezel Grille held by Neo Magnets
- Diameter x Depth: 13<sup>3</sup>/<sub>8</sub>" x 7<sup>7</sup>/<sub>8</sub>"
- Ceiling Cut Out: 11<sup>7</sup>/<sub>8</sub>"

**ITEM**  
C1075s

**U/M**  
Each



Shipping  
Now



Shipping  
Now

### C875s 8" Ceiling LCR Speaker

One LCR ceiling speaker with woofer and tweeter bridge fixed at a 15° angle. 8" Kevlar® woofer and 1" pivoting aluminum dome tweeter, ±3dB bass & treble contour switches and 175 watt power handling.

- Replaces C871 Ceiling LCR Speaker
- Power Handling: 175 Watts
- Frequency Response: 28Hz - 22kHz
- Impedance: 8Ω
- Sensitivity: 92dB 1W/1m
- Includes Thin-Bezel Grille held by Neo Magnets
- Diameter x Depth: 11<sup>1</sup>/<sub>8</sub>" x 5<sup>3</sup>/<sub>4</sub>"
- Ceiling Cut Out: 9<sup>3</sup>/<sub>4</sub>"

**ITEM**  
C875s

**U/M**  
Each

### C675s 6½" Ceiling LCR Speaker

One LCR ceiling speaker with woofer and tweeter bridge fixed at a 15° angle. 6½" Kevlar® woofer and 1" pivoting aluminum dome tweeter and 125 watt power handling.

- New Ceiling LCR Speaker
- Power Handling: 125 Watts
- Frequency Response: 32Hz - 22kHz
- Impedance: 8Ω
- Sensitivity: 90dB 1W/1m
- Includes Thin-Bezel Grille held by Neo Magnets
- Diameter x Depth: 9<sup>1</sup>/<sub>4</sub>" x 3<sup>1</sup>/<sub>16</sub>"
- Ceiling Cut Out: 8<sup>1</sup>/<sub>4</sub>"

**ITEM**  
C675s

**U/M**  
Each



Shipping  
Now



Shipping  
Now

### IW675s 6½" Inwall LCR Speaker

One inwall LCR speaker with two 6½" Kevlar® woofers, 1" pivoting aluminum dome tweeter, ±3dB bass & treble contour switches and 150 watt power handling. Fits horizontally between 16" on-center wall studs.

- Replaces IW655 Inwall LCR Speaker
- Power Handling: 150 Watts
- Frequency Response: 40Hz - 22kHz
- Impedance: 8Ω
- Sensitivity: 90dB 1W/1m
- Includes Thin-Bezel Grille held by Neo Magnets
- Dimensions (H x W x D): 9" x 16<sup>1</sup>/<sub>8</sub>" x 3<sup>3</sup>/<sub>16</sub>"
- Wall Cut Out (H x W): 7<sup>1</sup>/<sub>2</sub>" x 14<sup>1</sup>/<sub>2</sub>"

**ITEM**  
IW675s

**U/M**  
Each

### IW575s 5¼" Inwall LCR Speaker

One inwall LCR speaker with two 5¼" Kevlar® woofers, 1" pivoting aluminum dome tweeter, ±3dB bass & treble contour switches and 125 watt power handling.

- Replaces IW555 Inwall LCR Speaker
- Power Handling: 125 Watts
- Frequency Response: 50Hz - 22kHz
- Impedance: 8Ω
- Sensitivity: 88dB 1W/1m
- Includes Thin-Bezel Grille held by Neo Magnets
- Dimensions (H x W x D): 8" x 15<sup>1</sup>/<sub>4</sub>" x 3<sup>3</sup>/<sub>8</sub>"
- Wall Cut Out (H x W): 6<sup>3</sup>/<sub>16</sub>" x 14<sup>1</sup>/<sub>2</sub>"

**ITEM**  
IW575s

**U/M**  
Each



Shipping  
Now

# Signature

## Whole-House Speakers



Shipping  
Now

### C895s 8" Ceiling Speakers

ITEM U/M  
C895s Pair

One pair of ceiling speakers with 8" Kevlar® woofers, cast magnesium woofer baskets, 1" pivoting aluminum dome tweeters, ±3dB bass & treble contour switches and 175 watt power handling.

- Replaces C851 Ceiling Speakers
- Power Handling: 175 Watts
- Frequency Response: 28Hz - 22kHz
- Impedance: 8Ω
- Sensitivity: 92dB 1W/1m
- Includes Thin-Bezel Grilles held by Neo Magnets
- Diameter x Depth: 11<sup>1</sup>/<sub>8</sub>" x 4<sup>1</sup>/<sub>2</sub>"
- Ceiling Cut Out: 9<sup>3</sup>/<sub>4</sub>"

### C695s 6<sup>1</sup>/<sub>2</sub>" Ceiling Speakers

ITEM U/M  
C695s Pair

One pair of ceiling speakers with 6<sup>1</sup>/<sub>2</sub>" Kevlar® woofers, cast magnesium woofer baskets, 1" pivoting aluminum dome tweeters, +3dB bass & treble contour switches and 150 watt power handling.

- Replaces C646 Ceiling Speakers
- Power Handling: 150 Watts
- Frequency Response: 32Hz - 22kHz
- Impedance: 8Ω
- Sensitivity: 90dB 1W/1m
- Includes Thin-Bezel Grilles held by Neo Magnets
- Diameter x Depth: 9<sup>1</sup>/<sub>4</sub>" x 3<sup>5</sup>/<sub>16</sub>"
- Ceiling Cut Out: 8<sup>1</sup>/<sub>4</sub>"



Shipping  
Now



Shipping  
Now

### W895s 8" Inwall Speakers

ITEM U/M  
W895s Pair

One pair of inwall speakers with 8" Kevlar® woofers, cast magnesium woofer baskets, 1" pivoting aluminum dome tweeters, ±3dB bass & treble contour switches and 175 watt power handling.

- Replaces W852 Inwall Speakers
- Power Handling: 175 Watts
- Frequency Response: 28Hz - 22kHz
- Impedance: 8Ω
- Sensitivity: 92dB 1W/1m
- Includes Thin-Bezel Grilles held by Neo Magnets
- Dimensions (H x W x D): 14<sup>7</sup>/<sub>8</sub>" x 10<sup>1</sup>/<sub>8</sub>" x 4<sup>1</sup>/<sub>8</sub>"
- Wall Cut Out (H x W): 13<sup>5</sup>/<sub>8</sub>" x 8<sup>3</sup>/<sub>4</sub>"

### W695s 6<sup>1</sup>/<sub>2</sub>" Inwall Speakers

ITEM U/M  
W695s Pair

One pair of inwall speakers with 6<sup>1</sup>/<sub>2</sub>" Kevlar® woofers, cast magnesium woofer baskets, 1" pivoting aluminum dome tweeters, +3dB bass & treble contour switches and 150 watt power handling.

- Replaces W692 Inwall Speakers
- Power Handling: 150 Watts
- Frequency Response: 32Hz - 22kHz
- Impedance: 8Ω
- Sensitivity: 90dB 1W/1m
- Includes Thin-Bezel Grilles held by Neo Magnets
- Dimensions (H x W x D): 12<sup>1</sup>/<sub>4</sub>" x 8<sup>3</sup>/<sub>16</sub>" x 3<sup>3</sup>/<sub>8</sub>"
- Wall Cut Out (H x W): 10<sup>7</sup>/<sub>8</sub>" x 6<sup>3</sup>/<sub>4</sub>"



Shipping  
Now

# Whole-House Ceiling Speakers

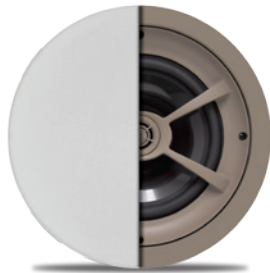
## Signature C895s

Shipping Now

ITEM C895s U/M Pair

One pair of ceiling speakers with 8" Kevlar® woofers, cast magnesium woofer baskets, 1" pivoting aluminum dome tweeters, ±3dB bass & treble contour switches and 175 watt power handling.

- Replaces C851 Ceiling Speakers
- Power Handling: 175 Watts
- Frequency Response: 28Hz - 22kHz
- Impedance: 8Ω
- Sensitivity: 92dB 1W/1m
- Includes Thin-Bezel Grilles held by Neo Magnets
- Diameter x Depth: 11½" x 4½"
- Ceiling Cut Out: 9¾"



## Protege C801

ITEM PAS11801 U/M Pair

One pair of ceiling speakers with 8" graphite woofers, 1" pivoting aluminum dome tweeters, +3dB bass & treble contour switches and 150 watt power handling.

- Replaces C800 Ceiling Speakers
- Power Handling: 150 Watts
- Frequency Response: 28Hz - 22kHz
- Impedance: 8Ω
- Sensitivity: 92dB 1W/1m
- Includes Thin-Bezel Grilles held by Neo Magnets
- Diameter x Depth: 11½" x 4¼"
- Ceiling Cut Out: 9¾"

## Protege C791

ITEM PAS11791 U/M Pair

One pair of ceiling speakers with 8" polypropylene woofers, 1" pivoting soft dome tweeters and 125 watt power handling.

- Replaces C790 Ceiling Speakers
- Power Handling: 125 Watts
- Frequency Response: 36Hz - 20kHz
- Impedance: 8Ω
- Sensitivity: 92dB 1W/1m
- Includes Thin-Bezel Grilles held by Neo Magnets
- Diameter x Depth: 11½" x 4¼"
- Ceiling Cut Out: 9¾"



## Signature C695s

Shipping Now

ITEM C695s U/M Pair

One pair of ceiling speakers with 6½" Kevlar® woofers, cast magnesium woofer baskets, 1" pivoting aluminum dome tweeters, +3dB bass & treble contour switches and 150 watt power handling.

- Replaces C646 Ceiling Speakers
- Power Handling: 150 Watts
- Frequency Response: 32Hz - 22kHz
- Impedance: 8Ω
- Sensitivity: 90dB 1W/1m
- Includes Thin-Bezel Grilles held by Neo Magnets
- Diameter x Depth: 9¼" x 3½"
- Ceiling Cut Out: 8¼"

## Protege C641

ITEM PAS11641 U/M Pair

One pair of ceiling speakers with 6½" graphite woofers, 1" pivoting aluminum dome tweeters, +3dB bass & treble contour switches and 125 watt power handling.

- Replaces C640 Ceiling Speakers
- Power Handling: 125 Watts
- Frequency Response: 32Hz - 22kHz
- Impedance: 8Ω
- Sensitivity: 92dB 1W/1m
- Includes Thin-Bezel Grilles held by Neo Magnets
- Diameter x Depth: 9¼" x 3½"
- Ceiling Cut Out: 8¼"





# Whole-House Ceiling Speakers



## Protege C626

**ITEM**  
PAS11626      **U/M**  
Pair

One pair of ceiling speakers with 6½" graphite woofers, 1" pivoting silk dome tweeters and 100 watt power handling.

- Replaces C625 Ceiling Speakers
- Power Handling: 100 Watts
- Frequency Response: 45Hz - 20kHz
- Impedance: 8Ω
- Sensitivity: 91dB 1W/1m
- Includes Thin-Bezel Grilles held by Neo Magnets
- Diameter x Depth: 9¼" x 4"
- Ceiling Cut Out: 8¼"

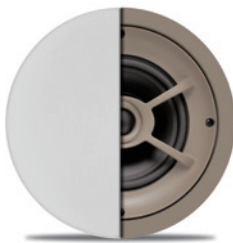
## Protege C635

**Shipping**  
Q4 2016

**ITEM**  
C635      **U/M**  
Pair

One pair of ceiling speakers with 6½" aluminum woofers, 1" pivoting titanium dome tweeters and 100 watt power handling.

- New Ceiling Speakers
- Power Handling: 100 Watts
- Frequency Response: 40Hz - 22kHz
- Impedance: 8Ω
- Sensitivity: 92dB 1W/1m
- Includes Thin-Bezel Grilles held by Neo Magnets
- Diameter x Depth: 9¼" x 3¾"
- Ceiling Cut Out: 8¼"



## Protege C621

**ITEM**  
PAS11621      **U/M**  
Pair

One pair of ceiling speakers with 6½" polypropylene woofers, 1" pivoting silk dome tweeters and 100 watt power handling.

- Replaces C620 Ceiling Speakers
- Power Handling: 100 Watts
- Frequency Response: 45Hz - 20kHz
- Impedance: 8Ω
- Sensitivity: 91dB 1W/1m
- Includes Thin-Bezel Grilles held by Neo Magnets
- Diameter x Depth: 9¼" x 3⅝"
- Ceiling Cut Out: 8¼"

## Protege C612

**ITEM**  
PAS11612      **U/M**  
Pair

One pair of ceiling speakers with 6½" polypropylene woofers, 1" pivoting soft dome tweeters and 85 watt power handling.

- Replaces C610 Ceiling Speakers
- Power Handling: 85 Watts
- Frequency Response: 45Hz - 20kHz
- Impedance: 8Ω
- Sensitivity: 91dB 1W/1m
- Includes Thin-Bezel Grilles held by Neo Magnets
- Diameter x Depth: 9¼" x 3⅝"
- Ceiling Cut Out: 8¼"



## Protege C606

**ITEM**  
PAS11606      **U/M**  
Pair

One pair of ceiling speakers with 6½" polypropylene woofers, ¾" soft dome tweeters and 75 watt power handling.

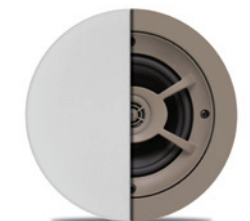
- Replaces C605 Ceiling Speakers
- Power Handling: 75 Watts
- Frequency Response: 45Hz - 20kHz
- Impedance: 8Ω
- Sensitivity: 90dB 1W/1m
- Includes Thin-Bezel Grilles held by Neo Magnets
- Diameter x Depth: 9¼" x 3⅝"
- Ceiling Cut Out: 8¼"

## Protege C501

**ITEM**  
PAS11501      **U/M**  
Pair

One pair of ceiling speakers with 5¼" polypropylene woofers, ½" pivoting polyamide hard dome tweeters and 75 watt power handling.

- Replaces C500 Ceiling Speakers
- Power Handling: 75 Watts
- Frequency Response: 40Hz - 20kHz
- Impedance: 8Ω
- Sensitivity: 90dB 1W/1m
- Includes Thin-Bezel Grilles held by Neo Magnets
- Diameter x Depth: 7¾" x 3¼"
- Ceiling Cut Out: 6⅞"



# LCR Speakers

## Signature C1075s

Shipping Now

ITEM C1075s U/M Each

One LCR ceiling speaker with woofer and midrange/tweeter bridge fixed at a 15° angle. 10" Kevlar® woofer, 3" pivoting Kevlar® midrange, 1" pivoting aluminum dome tweeter, ±3dB midrange & treble contour switches and 200 watt power handling. Required for installation, the included PCB-C1000 bracket is designed for new construction as well as retrofit applications.

- Replaces C1031 Ceiling LCR Speaker
- Power Handling: 200 Watts
- Frequency Response: 25Hz - 22kHz
- Impedance: 4Ω
- Sensitivity: 94dB 1W/1m
- Includes Thin-Bezel Grille held by Neo Magnets
- Diameter x Depth: 13<sup>3</sup>/<sub>8</sub>" x 7<sup>7</sup>/<sub>8</sub>"
- Ceiling Cut Out: 11<sup>7</sup>/<sub>8</sub>"



## Signature C875s

Shipping Now

ITEM C875s U/M Each

One LCR ceiling speaker with woofer and tweeter bridge fixed at a 15° angle. 8" Kevlar® woofer and 1" pivoting aluminum dome tweeter, ±3dB bass & treble contour switches and 175 watt power handling.

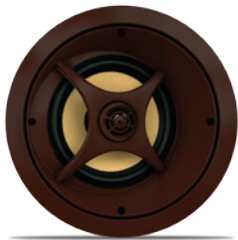
- Replaces C871 Ceiling LCR Speaker
- Power Handling: 175 Watts
- Frequency Response: 28Hz - 22kHz
- Impedance: 8Ω
- Sensitivity: 92dB 1W/1m
- Includes Thin-Bezel Grille held by Neo Magnets
- Diameter x Depth: 11<sup>1</sup>/<sub>8</sub>" x 5<sup>3</sup>/<sub>4</sub>"
- Ceiling Cut Out: 9<sup>3</sup>/<sub>4</sub>"

## Protege C841

ITEM PAS13841 U/M Each

One LCR ceiling speaker with woofer and tweeter bridge fixed at a 15° angle. 8" graphite woofer and 1" pivoting silk dome tweeter, ±3dB bass & treble contour switches and 150 watt power handling.

- Replaces C840 Ceiling LCR Speaker
- Power Handling: 150 Watts
- Frequency Response: 40Hz - 22kHz
- Impedance: 8Ω
- Sensitivity: 92dB 1W/1m
- Includes Thin-Bezel Grille held by Neo Magnets
- Diameter x Depth: 11<sup>1</sup>/<sub>8</sub>" x 5<sup>7</sup>/<sub>8</sub>"
- Ceiling Cut Out: 9<sup>3</sup>/<sub>4</sub>"



## Signature C675s

Shipping Now

ITEM C675s U/M Each

One LCR ceiling speaker with woofer and tweeter bridge fixed at a 15° angle. 6<sup>1</sup>/<sub>2</sub>" Kevlar® woofer and 1" pivoting aluminum dome tweeter and 125 watt power handling.

- New Ceiling LCR Speaker
- Power Handling: 125 Watts
- Frequency Response: 32Hz - 22kHz
- Impedance: 8Ω
- Sensitivity: 90dB 1W/1m
- Includes Thin-Bezel Grille held by Neo Magnets
- Diameter x Depth: 9<sup>1</sup>/<sub>4</sub>" x 3<sup>1</sup>/<sub>16</sub>"
- Ceiling Cut Out: 8<sup>1</sup>/<sub>4</sub>"

## Protege C661

ITEM PAS13661 U/M Each

One LCR ceiling speaker with woofer and tweeter bridge fixed at a 15° angle. 6<sup>1</sup>/<sub>2</sub>" graphite woofer and 1" pivoting aluminum dome tweeter and 125 watt power handling.

- Replaces C660 Ceiling LCR Speaker
- Power Handling: 125 Watts
- Frequency Response: 36Hz - 22kHz
- Impedance: 8Ω
- Sensitivity: 92dB 1W/1m
- Includes Thin-Bezel Grille held by Neo Magnets
- Diameter x Depth: 9<sup>1</sup>/<sub>4</sub>" x 4<sup>9</sup>/<sub>16</sub>"
- Ceiling Cut Out: 8<sup>1</sup>/<sub>4</sub>"



# LCR Speakers



## Protege C656

**ITEM**      **U/M**  
PAS13656      Each

One LCR ceiling speaker with woofer and tweeter bridge fixed at a 15° angle. 6½" graphite woofer and 1" pivoting silk dome tweeter and 100 watt power handling.

- Replaces C655 Ceiling LCR Speaker
- Power Handling: 100 Watts
- Frequency Response: 45Hz - 20kHz
- Impedance: 8Ω
- Sensitivity: 91dB 1W/1m
- Includes Thin-Bezel Grille held by Neo Magnets
- Diameter x Depth: 9¼" x 5"
- Ceiling Cut Out: 8¼"

## Protege C651

**ITEM**      **U/M**  
PAS13651      Each

One LCR ceiling speaker with woofer and tweeter bridge fixed at a 15° angle. 6½" polypropylene woofer and 1" pivoting silk dome tweeter and 100 watt power handling.

- Replaces C650 Ceiling LCR Speaker
- Power Handling: 100 Watts
- Frequency Response: 45Hz - 20kHz
- Impedance: 8Ω
- Sensitivity: 91dB 1W/1m
- Includes Thin-Bezel Grille held by Neo Magnets
- Diameter x Depth: 9¼" x 4⅞"
- Ceiling Cut Out: 8¼"



## Signature IW675s Shipping Now

**ITEM**      **U/M**  
IW675s      Each

One inwall LCR speaker with two 6½" Kevlar® woofers, 1" pivoting aluminum dome tweeter, ±3dB bass & treble contour switches and 150 watt power handling. Fits horizontally between 16" on-center wall studs.

- Replaces IW655 Inwall LCR Speaker
- Power Handling: 150 Watts
- Frequency Response: 40Hz - 22kHz
- Impedance: 8Ω
- Sensitivity: 90dB 1W/1m
- Includes Thin-Bezel Grille held by Neo Magnets
- Dimensions (H x W x D): 9" x 16⅞" x 3⅜"
- Wall Cut Out (H x W): 7½" x 14½"

## Protege IW630

**ITEM**      **U/M**  
PAS22630      Each

One inwall LCR speaker with two 6½" graphite woofers, 1" pivoting soft dome tweeter, ±3dB bass & treble contour switches and 125 watt power handling. Fits horizontally between 16" on-center wall studs.

- Replaces IW625 Inwall LCR Speaker
- Power Handling: 125 Watts
- Frequency Response: 55Hz - 20kHz
- Impedance: 8Ω
- Sensitivity: 90dB 1W/1m
- Includes Thin-Bezel Grille held by Neo Magnets
- Dimensions (H x W x D): 9" x 16⅞" x 3"
- Wall Cut Out (H x W): 7½" x 14½"



## Signature IW575s Shipping Now

**ITEM**      **U/M**  
IW575s      Each

One inwall LCR speaker with two 5¼" Kevlar® woofers, 1" pivoting aluminum dome tweeter, ±3dB bass & treble contour switches and 125 watt power handling.

- Replaces IW555 Inwall LCR Speaker
- Power Handling: 125 Watts
- Frequency Response: 50Hz - 22kHz
- Impedance: 8Ω
- Sensitivity: 88dB 1W/1m
- Includes Thin-Bezel Grille held by Neo Magnets
- Dimensions (H x W x D): 8" x 15½" x 3⅞"
- Wall Cut Out (H x W): 6¾" x 14½"

## Protege IW530

**ITEM**      **U/M**  
PAS22530      Each

One inwall LCR speaker with two 5¼" graphite woofers, 1" pivoting aluminum dome tweeter, ±3dB bass & treble contour switches and 100 watt power handling.

- Replaces IW525 Inwall LCR Speaker
- Power Handling: 100 Watts
- Frequency Response: 65Hz - 20kHz
- Impedance: 8Ω
- Sensitivity: 88dB 1W/1m
- Includes Thin-Bezel Grille held by Neo Magnets
- Dimensions (H x W x D): 8" x 15½" x 3⅞"
- Wall Cut Out (H x W): 6¾" x 14½"



# Whole-House Inwall Speakers

## Signature W895s

Shipping Now

ITEM W895s U/M Pair

One pair of inwall speakers with 8" Kevlar<sup>®</sup> woofers, cast magnesium woofer baskets, 1" pivoting aluminum dome tweeters,  $\pm 3$ dB bass & treble contour switches and 175 watt power handling.

- Replaces W852 Inwall Speakers
- Power Handling: 175 Watts
- Frequency Response: 28Hz - 22kHz
- Impedance: 8 $\Omega$
- Sensitivity: 92dB 1W/1m
- Includes Thin-Bezel Grilles held by Neo Magnets
- Dimensions (H x W x D): 14 $\frac{7}{8}$ " x 10 $\frac{1}{8}$ " x 4 $\frac{1}{8}$ "
- Wall Cut Out (H x W): 13 $\frac{3}{8}$ " x 8 $\frac{3}{4}$ "



## Protege W802

ITEM PAS21802 U/M Pair

One pair of inwall speakers with 8" graphite woofers, 1" pivoting aluminum dome tweeters, +3dB bass & treble contour switches and 150 watt power handling.

- Replaces W800 Inwall Speakers
- Power Handling: 150 Watts
- Frequency Response: 28Hz - 22kHz
- Impedance: 8 $\Omega$
- Sensitivity: 92dB 1W/1m
- Includes Thin-Bezel Grilles held by Neo Magnets
- Dimensions (H x W x D): 14 $\frac{7}{8}$ " x 10 $\frac{1}{8}$ " x 3 $\frac{3}{4}$ "
- Wall Cut Out (H x W): 13 $\frac{3}{8}$ " x 8 $\frac{3}{4}$ "

## Signature W695s

Shipping Now

ITEM W695s U/M Pair

One pair of inwall speakers with 6 $\frac{1}{2}$ " Kevlar<sup>®</sup> woofers, cast magnesium woofer baskets, 1" pivoting aluminum dome tweeters, +3dB bass & treble contour switches and 150 watt power handling.

- Replaces W692 Inwall Speakers
- Power Handling: 150 Watts
- Frequency Response: 32Hz - 22kHz
- Impedance: 8 $\Omega$
- Sensitivity: 90dB 1W/1m
- Includes Thin-Bezel Grilles held by Neo Magnets
- Dimensions (H x W x D): 12 $\frac{1}{4}$ " x 8 $\frac{3}{16}$ " x 3 $\frac{3}{8}$ "
- Wall Cut Out (H x W): 10 $\frac{7}{8}$ " x 6 $\frac{3}{4}$ "



## Protege W682

ITEM PAS21682 U/M Pair

One pair of inwall speakers with 6 $\frac{1}{2}$ " graphite woofers, 1" pivoting aluminum dome tweeters, +3dB bass & treble contour switches and 125 watt power handling.

- Replaces W680 Inwall Speakers
- Power Handling: 125 Watts
- Frequency Response: 32Hz - 22kHz
- Impedance: 8 $\Omega$
- Sensitivity: 92dB 1W/1m
- Includes Thin-Bezel Grilles held by Neo Magnets
- Dimensions (H x W x D): 12 $\frac{1}{4}$ " x 8 $\frac{3}{16}$ " x 3 $\frac{3}{16}$ "
- Wall Cut Out (H x W): 10 $\frac{7}{8}$ " x 6 $\frac{3}{4}$ "

## Protege W672

ITEM PAS21672 U/M Pair

One pair of inwall speakers with 6 $\frac{1}{2}$ " polypropylene woofers, 1" pivoting silk dome tweeters and 100 watt power handling.

- Replaces W670 Inwall Speakers
- Power Handling: 100 Watts
- Frequency Response: 36Hz - 20kHz
- Impedance: 8 $\Omega$
- Sensitivity: 91dB 1W/1m
- Includes Thin-Bezel Grilles held by Neo Magnets
- Dimensions (H x W x D): 12 $\frac{1}{4}$ " x 8 $\frac{3}{16}$ " x 3 $\frac{1}{8}$ "
- Wall Cut Out (H x W): 10 $\frac{7}{8}$ " x 6 $\frac{3}{4}$ "



## Protege W667

ITEM PAS21667 U/M Pair

One pair of inwall speakers with 6 $\frac{1}{2}$ " polypropylene woofers,  $\frac{3}{4}$ " soft dome tweeters and 75 watt power handling.

- Replaces W665 Inwall Speakers
- Power Handling: 75 Watts
- Frequency Response: 45Hz - 20kHz
- Impedance: 8 $\Omega$
- Sensitivity: 90dB 1W/1m
- Includes Thin-Bezel Grilles held by Neo Magnets
- Dimensions (H x W x D): 12 $\frac{1}{4}$ " x 8 $\frac{3}{16}$ " x 3 $\frac{3}{16}$ "
- Wall Cut Out (H x W): 10 $\frac{7}{8}$ " x 6 $\frac{3}{4}$ "

# Twin-Tweeter Ceiling Speakers



## Protege C825TT

**ITEM**  
PAS12825      **U/M**  
Each

One ceiling speaker with 8" dual voice coil graphite woofer, two 1" pivoting aluminum dome tweeters, +3dB bass & treble contour switches and 150 watt power handling.

- Replaces C800TT Single Stereo Ceiling Speaker
- Power Handling: 150 Watts
- Frequency Response: 28Hz - 22kHz
- Impedance: 8Ω
- Sensitivity: 92dB 1W/1m
- Includes Thin-Bezel Grille held by Neo Magnets
- Diameter x Depth: 11 $\frac{1}{8}$ " x 4 $\frac{1}{4}$ "
- Ceiling Cut Out: 9 $\frac{3}{4}$ "

---

## Protege C625TT

**ITEM**  
PAS12625      **U/M**  
Each

One ceiling speaker with 6 $\frac{1}{2}$ " dual voice coil polypropylene woofer, two  $\frac{1}{2}$ " hard dome tweeters and 75 watt power handling.

- Replaces C600TT Single Stereo Ceiling Speaker
- Power Handling: 75 Watts
- Frequency Response: 36Hz - 20kHz
- Impedance: 8Ω
- Sensitivity: 92dB 1W/1m
- Includes Thin-Bezel Grille held by Neo Magnets
- Diameter x Depth: 9 $\frac{1}{4}$ " x 3 $\frac{5}{8}$ "
- Ceiling Cut Out: 8 $\frac{1}{4}$ "



PROFICIENT

# Protege

## Powered Subwoofers

### FS12 12" Floor Standing Sub

One dual-drive subwoofer with 12" front-firing polypropylene-coated fiber composite woofer, 12" down-firing passive radiator and Class D Amp with 300 watts RMS, 600 watts peak. Anti-clipping circuitry assures high output with low distortion. Black wood grain vinyl finish and dampened rubber feet.

- |  |  |
|--|--|
| <ul style="list-style-type: none"> <li>• Amplifier Type: Class D Amp</li> <li>• Power Rating Continuous: 300 Watts RMS</li> <li>• Power Rating Peak: 600 Watts Peak</li> <li>• Frequency Response: 28Hz - 150Hz</li> <li>• Subwoofer Output: 106dB SPL</li> <li>• Inputs: Left &amp; Right Line Level, LFE</li> <li>• Outputs: Line Level High-Pass</li> </ul> | <ul style="list-style-type: none"> <li>• Protection: Anti-Clipping Circuitry</li> <li>• Power On/Off: Auto Sensing</li> <li>• Phase Switch: 0 - 180°</li> <li>• Crossover: 50Hz - 150Hz; Bypass</li> <li>• Finish: Black Wood Grain Vinyl</li> <li>• Dampened Rubber Feet</li> <li>• Dimensions (H x W x D): 16<sup>5</sup>/<sub>8</sub>" x 14<sup>1</sup>/<sub>2</sub>" x 15<sup>1</sup>/<sub>2</sub>"</li> </ul> |
|--|--|

**ITEM**  
FS12      **U/M**  
Each



### FS10 10" Floor Standing Sub

One dual-drive subwoofer with 10" front-firing polypropylene-coated fiber composite woofer, 10" down-firing passive radiator and Class D Amp with 250 watts RMS, 500 watts peak. Anti-clipping circuitry assures high output with low distortion. Black wood grain vinyl finish and dampened rubber feet.

- |  |   |
|--|---|
| <ul style="list-style-type: none"> <li>• Amplifier Type: Class D Amp</li> <li>• Power Rating Continuous: 250 Watts RMS</li> <li>• Power Rating Peak: 500 Watts Peak</li> <li>• Frequency Response: 30Hz - 150Hz</li> <li>• Subwoofer Output: 103dB SPL</li> <li>• Inputs: Left &amp; Right Line Level, LFE</li> <li>• Outputs: Line Level High-Pass</li> </ul> | <ul style="list-style-type: none"> <li>• Protection: Anti-Clipping Circuitry</li> <li>• Power On/Off: Auto Sensing</li> <li>• Phase Switch: 0 - 180°</li> <li>• Crossover: 50Hz - 150Hz; Bypass</li> <li>• Finish: Black Wood Grain Vinyl</li> <li>• Dampened Rubber Feet</li> <li>• Dimensions (H x W x D): 15<sup>1</sup>/<sub>8</sub>" x 13<sup>1</sup>/<sub>4</sub>" x 14"</li> </ul> |
|--|---|

**ITEM**  
FS10      **U/M**  
Each

### FS8 8" Floor Standing Sub

One dual-drive subwoofer with 8" front-firing polypropylene-coated fiber composite woofer, 8" down-firing passive radiator and Class D Amp with 200 watts RMS, 400 watts peak. Anti-clipping circuitry assures high output with low distortion. Black wood grain vinyl finish and dampened rubber feet.

- |  |  |
|--|--|
| <ul style="list-style-type: none"> <li>• Amplifier Type: Class D Amp</li> <li>• Power Rating Continuous: 200 Watts RMS</li> <li>• Power Rating Peak: 400 Watts Peak</li> <li>• Frequency Response: 32Hz - 150Hz</li> <li>• Subwoofer Output: 100dB SPL</li> <li>• Inputs: Left &amp; Right Line Level, LFE</li> <li>• Outputs: Line Level High-Pass</li> </ul> | <ul style="list-style-type: none"> <li>• Protection: Anti-Clipping Circuitry</li> <li>• Power On/Off: Auto Sensing</li> <li>• Phase Switch: 0 - 180°</li> <li>• Crossover: 50Hz - 150Hz; Bypass</li> <li>• Finish: Black Wood Grain Vinyl</li> <li>• Dampened Rubber Feet</li> <li>• Dimensions (H x W x D): 13<sup>3</sup>/<sub>8</sub>" x 11<sup>3</sup>/<sub>4</sub>" x 12<sup>1</sup>/<sub>2</sub>"</li> </ul> |
|--|--|

**ITEM**  
FS8      **U/M**  
Each



PROFICIENT

# Protege™

## Passive Architectural Subwoofers



### IWS85 Dual 8" Inwall Sub

**ITEM**  
PAS23085      **U/M**  
Each

Dual 8" inwall passive subwoofer with long excursion graphite woofers and a power handling capacity of 200 watts. Fits vertically in a standard 2x4 stud bay. Designed to be used with the Proficient M3 Amp/Crossover.

- Replaces IWS82 Inwall Sub
- Power Handling: 200 Watts
- Frequency Response: 30Hz - 120Hz
- Includes Thin-Bezel Grille held by Neo Magnets
- Dimensions (H x W x D): 20<sup>5</sup>/<sub>16</sub>" x 11<sup>5</sup>/<sub>8</sub>" x 3<sup>3</sup>/<sub>4</sub>"
- Wall Cut Out (H x W): 19<sup>1</sup>/<sub>8</sub>" x 10<sup>5</sup>/<sub>8</sub>"

### IWS105 10" Inwall Sub

**ITEM**  
PAS24105      **U/M**  
Each

Inwall passive subwoofer with a 10" long excursion treated paper cone woofer and inverted ferrite magnet structure with a power handling capacity of 250 watts. Designed to be used with the Proficient M3 Amp/Crossover. For new construction, use the optional BB-IWS10 MDF back box.

- Replaces IWS100 Inwall Sub
- Power Handling: 250 Watts
- Frequency Response: 36Hz - 150Hz
- Includes Thin-Bezel Grille held by Neo Magnets
- Dimensions (H x W x D): 13<sup>5</sup>/<sub>8</sub>" x 13<sup>5</sup>/<sub>8</sub>" x 3<sup>3</sup>/<sub>4</sub>"
- Wall Cut Out (H x W): 12<sup>1</sup>/<sub>16</sub>" x 12<sup>1</sup>/<sub>16</sub>"



### ICS11 10" Ceiling Sub

**ITEM**  
PAS13111      **U/M**  
Each

Ceiling passive subwoofer with a 10" long excursion graphite woofer and a power handling capacity of 175 watts. Designed to be used with the Proficient M3 Amp/Crossover.

- Replaces ICS10 Ceiling Sub
- Power Handling: 175 Watts
- Frequency Response: 30Hz - 120Hz
- Includes Thin-Bezel Grille held by Neo Magnets
- Diameter x Depth: 13<sup>3</sup>/<sub>8</sub>" x 5<sup>5</sup>/<sub>8</sub>"
- Ceiling Cut Out: 11<sup>7</sup>/<sub>8</sub>"

### M3 Amp/Crossover

**ITEM**  
PAS72300      **U/M**  
Each

180 watt high-current mono amp with built-in crossover network. Crossover features adjustments for subwoofer fine-tuning to individual room acoustics. Includes bolt-on rack ears.

- Use with Proficient Inwall & Ceiling Architectural Subs
- Premium Cast Aluminum Faceplate
- Power: 180 Watts Single Channel
- Variable Low Pass Crossover: 35Hz - 150Hz
- LFE Input & Pass Through Output
- Phase Switch
- Remote Power-On Switching via Signal Sensing
- Includes Bolt-On Rack Ears
- Dimensions (H x W x D): 4" x 17<sup>1</sup>/<sub>8</sub>" x 12<sup>5</sup>/<sub>8</sub>"
- Weight: 18 lbs



### BB-IWS10 Back Box

**ITEM**  
PAS02100      **U/M**  
Each

Medium Density Fiberboard (MDF) back box for the IWS105 inwall sub, designed to fit any standard 16" stud bay. Cuts down on translational energy vibration between adjacent walls. The IWS105 sub is tuned to the BB-IWS10 back box. *Not for use with ICS11 or IWS85.*

- Dimensions (H x W x D): 42<sup>3</sup>/<sub>4</sub>" x 14<sup>3</sup>/<sub>8</sub>" x 3<sup>1</sup>/<sub>4</sub>"

# Outdoor / Indoor Speakers

## AW830wht | blk

WHT	BLK	U/M
PAS42830	PAS42833	Pair

One pair of indoor/outdoor speakers with 8" polypropylene woofers, 3" graphite midrange, 1" pivoting soft dome tweeters and 175 watt power handling. Includes swivel mounting brackets.

**Order in white or black.**

- Power Handling: 175 Watts
- Frequency Response: 35Hz - 20kHz
- Impedance: 4Ω
- Sensitivity: 89dB 1W/1m
- Dimensions (H x W x D): 15¾" x 8¾" x 8¾"



## AW650wht | blk

WHT	BLK	U/M
PAS41650	PAS41653	Pair

One pair of indoor/outdoor speakers with 6½" polypropylene woofers, 1" pivoting Supernil soft dome tweeters and 150 watt power handling. Includes swivel mounting brackets. **Order in white or black.**

- Power Handling: 150 Watts
- Frequency Response: 37Hz - 20kHz
- Impedance: 8Ω
- Sensitivity: 89dB 1W/1m
- Dimensions (H x W x D): 11" x 7" x 6¼"

## AW525wht | blk

WHT	BLK	U/M
PAS41525	PAS41527	Pair

One pair of indoor/outdoor speakers with 5¼" polypropylene woofers, 1" pivoting Supernil soft dome tweeters and 125 watt power handling. Includes swivel mounting brackets. **Order in white or black.**

- Power Handling: 125 Watts
- Frequency Response: 45Hz - 20kHz
- Impedance: 8Ω
- Sensitivity: 88dB 1W/1m
- Dimensions (H x W x D): 9¾" x 6½" x 6¾"



## AW400wht | blk

WHT	BLK	U/M
PAS41400	PAS41403	Pair

One pair of indoor/outdoor speakers with 4" polypropylene woofers, ¾" Supernil soft dome tweeters and 100 watt power handling. Includes swivel mounting brackets. **Order in white or black.**

- Power Handling: 100 Watts
- Frequency Response: 55Hz - 20kHz
- Impedance: 8Ω
- Sensitivity: 87dB 1W/1m
- Dimensions (H x W x D): 7¾" x 5½" x 5½"



# Outdoor / Indoor Twin-Tweeter Speakers



## AW600TTwht | blk

WHT	BLK	U/M
PAS42600	PAS42603	Each

One indoor/outdoor speaker with 6½" dual voice coil polypropylene woofer, two 1" pivoting Supernil soft dome tweeters and 125 watt power handling. Weather-resistant ABS housing, powder coated aluminum grille. Includes swivel mounting bracket. **Order in white or black.**

- Power Handling: 125 Watts
- Frequency Response: 50Hz - 20kHz
- Impedance: 4Ω
- Sensitivity: 91dB 1W/1m
- Dimensions (H x W x D): 7" x 12" x 8"

## AW500TTwht | blk

WHT	BLK	U/M
PAS42500	PAS42503	Each

One indoor/outdoor speaker with 5¼" dual voice coil polypropylene woofer, two 1" pivoting Supernil soft dome tweeters and 100 watt power handling. Weather-resistant ABS housing, powder coated aluminum grille. Includes swivel mounting bracket. **Order in white or black.**

- Power Handling: 100 Watts
- Frequency Response: 60Hz - 20kHz
- Impedance: 4Ω
- Sensitivity: 89dB 1W/1m
- Dimensions (H x W x D): 7" x 11" x 6¼"



# Rock Speakers

## R800G / R800S

G	S	U/M
PAS10800	PAS10801	Pair

One pair of rock speakers with 8" graphite woofers, 1" polyamide dome tweeters and 90 watt power handling. **Order in granite or sandstone.**

- Power Handling: 90 Watts
- Frequency Response: 65Hz - 20kHz
- Impedance: 8Ω
- Sensitivity: 95dB 1W/1m
- Weather-Resistant Design
- Dimensions (H x W x D): 14½" x 14½" x 11"



## R650G / R650S

G	S	U/M
PAS10650	PAS10651	Pair

One pair of rock speakers with 6½" graphite woofers, 1" polyamide dome tweeters and 60 watt power handling. **Order in granite or sandstone.**

- Power Handling: 60 Watts
- Frequency Response: 80Hz - 20kHz
- Impedance: 8Ω
- Sensitivity: 88dB 1W/1m
- Weather-Resistant Design
- Dimensions (H x W x D): 11½" x 9½" x 8¼"

# Cabinet Loudspeakers

## Signature GL6

**ITEM**  
PAS22652

**U/M**  
Each

One cabinet LCR speaker with two 6½" graphite woofers, 1" silk dome tweeter and 125 watt power handling. Features a seven-layer high-gloss black finish and wood framed grille with neo-magnets.

- Power Handling: 125 Watts
- Frequency Response: 46Hz - 20kHz
- Impedance: 4Ω
- Sensitivity: 89dB 1W/1m
- Cabinet Design
- Dimensions (H x W x D): 8" x 24" x 10½"



## CC550

**ITEM**  
PAS50550

**U/M**  
Each

One cabinet LCR speaker with two 5¼" Kevlar® woofers, 3" Kevlar® midrange, 1" aluminum dome tweeter and 125 watt power handling.

- Power Handling: 125 Watts
- Frequency Response: 40Hz - 20kHz
- Impedance: 8Ω
- Sensitivity: 88dB 1W/1m
- Cabinet Design
- Dimensions (H x W x D): 6¾" x 20½" x 8¾"

## CC540

**ITEM**  
PAS50540

**U/M**  
Each

One cabinet LCR speaker with two 5¼" graphite woofers, 3" graphite midrange, 1" aluminum dome tweeter and 100 watt power handling.

- Power Handling: 100 Watts
- Frequency Response: 70Hz - 20kHz
- Impedance: 8Ω
- Sensitivity: 89dB 1W/1m
- Cabinet Design
- Dimensions (H x W x D): 6¾" x 20½" x 8¾"



## CC400

**ITEM**  
PAS50400

**U/M**  
Each

One cabinet LCR speaker with two 4" polypropylene woofers, 1" aluminum dome tweeter and 85 watt power handling.

- Power Handling: 85 Watts
- Frequency Response: 80Hz - 20kHz
- Impedance: 8Ω
- Sensitivity: 89dB 1W/1m
- Cabinet Design
- Dimensions (H x W x D): 5½" x 20" x 7¼"

# Speaker Selectors



## SS4VC

**ITEM**  
PAS71455

**U/M**  
Each

Four-pair transformer-based on/off speaker selector with volume controls provides quick, convenient access for up to four stereo pairs. 60 watts power handling per channel, rear override switch for circuit protection and suction feet for stable operation.

- Power Handling: 60 Watts per Channel
- Frequency Response: 20Hz - 20kHz
- Protection: Front Mounted Switch & Rear Override
- Includes Area Labels
- Dimensions (H x W x D): 2<sup>3</sup>/<sub>16</sub>" x 17" x 6<sup>13</sup>/<sub>32</sub>"



## SS8P

**ITEM**  
PAS71850

**U/M**  
Each

Eight-pair resistor-based on/off speaker selector provides quick, convenient access for up to eight stereo pairs. 125 watts power handling per channel, rear override switch for circuit protection and suction feet for stable operation.

- Power Handling: 125 Watts per Channel
- Frequency Response: 20Hz - 20kHz
- Protection: Front Mounted Switch & Rear Override
- Includes Area Labels
- Dimensions (H x W x D): 2<sup>3</sup>/<sub>16</sub>" x 17" x 6<sup>13</sup>/<sub>32</sub>"



## SS4P

**ITEM**  
PAS71450

**U/M**  
Each

Four-pair resistor-based on/off speaker selector provides quick, convenient access for up to four stereo pairs. 125 watts power handling per channel, rear override switch for circuit protection and suction feet for stable operation.

- Power Handling: 125 Watts per Channel
- Frequency Response: 20Hz - 20kHz
- Protection: Front Mounted Switch & Rear Override
- Includes Area Labels
- Dimensions (H x W x D): 2<sup>3</sup>/<sub>16</sub>" x 8<sup>3</sup>/<sub>8</sub>" x 6<sup>13</sup>/<sub>32</sub>"

# Infrared Kits



## IR Shelf Top Kit

**ITEM**  
PAS80313      **U/M**  
Each

Contains all components needed for a one room system setup. Includes the following IR components:

- (1) IR Shelf Top Receiver
  - (1) IR Router
  - (1) IR Power Supply-250mA
  - (4) IR Single Flashers
- 



## IR Plasma Kit

**ITEM**  
PAS80315      **U/M**  
Each

Compatible with most Plasma, LCD, LED and DLP. Contains all components needed for a one room system setup. Includes the following IR components:

- (1) IR Plasma Receiver
  - (1) IR Router
  - (1) IR Power Supply-250mA
  - (4) IR Single Flashers
- 



## IR Mini-blk Kit

**ITEM**  
PAS80312BK      **U/M**  
Each

Contains all components needed for a one room system setup. Includes the following IR components:

- (1) IR Mini Receiver-blk
  - (1) IR Router
  - (1) IR Power Supply-250mA
  - (4) IR Single Flashers
- 



## IR Fish Eye Kit

**ITEM**  
PAS80311      **U/M**  
Each

Compatible with most Plasma, LCD, LED and DLP. Contains all components needed for a one room system setup. Includes the following IR components:

- (1) IR Fish Eye Receiver
- (1) IR Router
- (1) IR Power Supply-250mA
- (4) IR Single Flashers

# Infrared Components



## IR Shelf Top Receiver

**ITEM**  
PAS81300

**U/M**  
Each

Shelf-top IR receiver features Ambient Noise Suppression and LEDs to indicate system status and IR activity. IR Terminal included for easy, no-cut connection.

- Dimensions (L x W x D): 1 $\frac{1}{8}$ " x 3 $\frac{3}{16}$ " x 1 $\frac{1}{16}$ "

## IR Plasma Receiver

**ITEM**  
PAS81205

**U/M**  
Each

Super small, surface-mount IR plasma receiver. Two-piece design separates the receiver from the "Smart Circuit" electronics package for clean looking installation. The "Smart Circuit" blocks interference from plasmas or CFLs. LEDs indicate system status and IR activity. IR Terminal included for easy, no-cut connection. Compatible with most Plasma, LCD, LED and DLP.



## IR Mini Receiver-blk

**ITEM**  
PAS81200BK

**U/M**  
Each

Surface-mount mini IR receiver features Ambient Noise Suppression and LEDs to indicate system status and IR activity. IR Terminal included for easy, no-cut connection.

- Dimensions (L x W x D): 2 $\frac{1}{16}$ " x 1 $\frac{7}{32}$ " x  $\frac{9}{16}$ "



## IR Fish Eye Receiver

**ITEM**  
PAS81100

**U/M**  
Each

Flush-mount IR receiver features Ambient Noise Suppression and LEDs to indicate system status and IR activity. Includes four flavors of bezels (white, black, almond, and bone) and two Ambient Light Restrictor (ALR) bezels for severe plasma or CFL environments. IR Terminal included for easy, no-cut connection. Compatible with most Plasma, LCD, LED and DLP.

- Dimensions (Dia x L): 1 $\frac{5}{32}$ " x 2 $\frac{7}{8}$ "
- Color Bezel (Dia x L): 4 $\frac{7}{64}$ " x  $\frac{1}{8}$ "

- ALR Bezel (Dia x L): 4 $\frac{7}{64}$ " x 2 $\frac{3}{64}$ "



## IR Router

**ITEM**  
PAS82200

**U/M**  
Each

Central router for all Proficient IR systems. Controls IR receivers and IR Flashers. Equipped with 3.5mm mini jacks for quick connection of IR Receivers and Flashers. Multiple IR Routers can be cascaded for additional IR Flasher output jacks.



## IR Power Supply–250mA

**ITEM**  
PAS85105

**U/M**  
Each

12V DC, 250mA regulated power supply designed for use in small to moderate IR systems. Powers the IR Receivers, IR Router and IR Flashers.



## IR Single Flasher

**ITEM**  
PAS83300

**U/M**  
Each

LED flashes red to indicate operation. Features docking port which allows quick installation of IR Flasher on a component, as well as easy removal of IR Flasher. Includes an 8' wire for painless hookup to IR Router.



## IR Dual Flasher

**ITEM**  
PAS83400

**U/M**  
Each

LEDs flash red to indicate operation. Features docking ports which allow quick installation of IR Flashers on components, as well as easy removal of IR Flashers. The Dual IR Flasher splits to two 8' wires for easy hookup to IR Router.



# Volume Controls

## VC60i

**ITEM**  
PAS35377

**U/M**  
Each



60-watt impedance-balancing volume control with autoformer. Features quick & secure wire connecting system. Fits in most single-gang J-boxes and plaster rings. Includes white, bone and almond plates, inserts and knobs.

- Power Handling: 60 Watts Continuous  
120 Watts Peak Music Power
- Frequency Response: 20Hz - 20kHz
- Steps: 12 (Make Before Break)
- Total Attenuation: 42dB (Max)
- Depth: 2½" Behind Plate



## VC45i

**ITEM**  
PAS36151

**U/M**  
Each

45-watt impedance-balancing volume control with autoformer. Features removable wire block terminal for easy connection. Fits in most single-gang J-boxes and plaster rings. Includes white, bone and almond plates, inserts and knobs.

- Power Handling: 45 Watts Continuous  
90 Watts Peak Music Power
- Frequency Response: 20Hz - 20kHz
- Steps: 10 (Make Before Break)
- Total Attenuation: 42dB (Max)
- Depth: 2½" Behind Plate

## VCS60

**ITEM**  
PAS37371

**U/M**  
Each



60-watt stereo volume control with autoformer. Features quick & secure wire connecting system. Fits in most single-gang J-boxes and plaster rings. Includes white, bone and almond plates, inserts and knobs.

- Power Handling: 60 Watts Continuous  
120 Watts Peak Music Power
- Frequency Response: 20Hz - 20kHz
- Steps: 12 (Make Before Break)
- Total Attenuation: 42dB (Max)
- Depth: 2½" Behind Plate



## VC60SL

**ITEM**  
PAS32396

**U/M**  
Each

60-watt slider stereo volume control with removable screw down wire terminal design. Fits in most single-gang J-boxes and plaster rings. Includes white, bone and almond plates, inserts and sliders.

- Power Handling: 60 Watts Continuous  
120 Watts Peak Music Power
- Frequency Response: 20Hz - 20kHz
- Steps: 12 (Make Before Break)
- Total Attenuation: 42dB (Max)
- Dimensions (H x W x D): 4" x 1⅞" x 3¼"

## VC60AW

**ITEM**  
PAS34320G

**U/M**  
Each



60-watt weather-resistant volume control sealed against dust and moisture. Fits onto ¾" conduit or can be surface mounted. Available in Gray.

- Power Handling: 60 Watts Continuous  
120 Watts Peak Music Power
- Frequency Response: 20Hz - 20kHz
- Steps: 12 (Make Before Break)
- Total Attenuation: 42dB (Max)
- Dimensions (H x W x D): H 4½" x W 2¾" x D 3½"

# Pre-Construction Brackets

## PCB-C800

<b>ITEM</b>	<b>U/M</b>
PCB11800	Pair

One pair of pre-construction brackets for new construction. Fits 8" 2-way, LCR & twin-tweeter ceiling speakers.



## PCB-C600

<b>ITEM</b>	<b>U/M</b>
PCB11600	Pair

One pair of pre-construction brackets for new construction. Fits 6½" 2-way, LCR & twin-tweeter ceiling speakers.

## PCB-C500

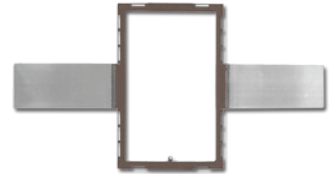
<b>ITEM</b>	<b>U/M</b>
PCB11500	Pair

One pair of pre-construction brackets for new construction. Fits 5¼" ceiling speakers.

## PCB-W800

<b>ITEM</b>	<b>U/M</b>
PCB21800	Pair

One pair of pre-construction brackets for new construction. Fits 8" inwall speakers.



## PCB-W600

<b>ITEM</b>	<b>U/M</b>
PCB21600	Pair

One pair of pre-construction brackets for new construction. Fits 6½" inwall speakers.



## PCB-IW600

<b>ITEM</b>	<b>U/M</b>
PCB22600	Each

One each pre-construction bracket for new construction. Fits 6½" inwall LCR speakers.



## PCB-IW500

<b>ITEM</b>	<b>U/M</b>
PCB22500	Each

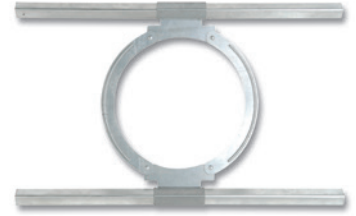
One each pre-construction bracket for new construction. Fits 5¼" inwall LCR speakers.

# Ceiling Tile Brackets

## CTB-C800

ITEM	U/M
CTB11801	Each

One each ceiling tile bracket used in drop ceiling and T-bar type ceiling applications. Fits 8" 2-way, LCR & twin-tweeter ceiling speakers.



## CTB-C600

ITEM	U/M
CTB11601	Each

One each ceiling tile bracket used in drop ceiling and T-bar type ceiling applications. Fits 6½" 2-way, LCR & twin-tweeter ceiling speakers.

---

## Back Boxes



## BB-IWS10

ITEM	U/M
PAS02100	Each

Medium Density Fiberboard (MDF) back box for the IWS105 inwall sub, designed to fit any standard 16" stud bay. Cuts down on translational energy vibration between adjacent walls. The IWS105 sub is tuned to the BB-IWS10 back box. *Not for use with ICS11 or IWS85.*

• Dimensions (H x W x D): 42¾" x 14¾" x 3¼"

---

## BB-C800

ITEM	U/M
PAS01800	Each

One metal back box for 8" 2-way, LCR & twin-tweeter ceiling speakers. **UL 263-03 1-hour fire rating.**



## BB-C650

ITEM	U/M
PAS01603	Each

One metal back box for 6½" 2-way, LCR & twin-tweeter ceiling speakers. CMB-24 mounting bars are needed when installing in ceiling joists 24" on-center or suspended ceilings. **UL 263-03 1-hour fire rating.**



## BB-W600

ITEM	U/M
PAS02600	Each

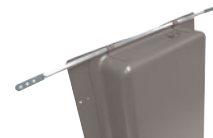
One metal back box for 6½" inwall speakers. **UL 263-03 1-hour fire rating.**

---

## CMB-24

ITEM	U/M
PAS01000	Pair

One pair of ceiling mounting bars slip into clips on BB-C650 back box. For installation in ceiling joists 24" on-center or suspended ceilings.





# Speaker Cover Plates



## CPC-800

One pair of white cover plates for 8" 2-way, LCR & twin-tweeter ceiling speakers.

ITEM	U/M
PAS03800	Pair

## CPC-600

One pair of white cover plates for 6½" 2-way, LCR & twin-tweeter ceiling speakers.

ITEM	U/M
PAS03600	Pair

---

## CPW-600

One pair of white cover plates for 6½" inwall speakers.

ITEM	U/M
PAS04600	Pair



---

# Replacement Speaker Grilles



## Thin-Bezel 5¼" Ceiling Grille

Compatible with Proficient Protege 5¼" Ceiling Speakers.

ITEM	U/M
1001-11501	Each

---

## Thin-Bezel 6½" Ceiling Grille

Compatible with Proficient Signature & Protege 6½" 2-Way, LCR & Twin-Tweeter Ceiling Speakers.

ITEM	U/M
1001-11602	Each



## Thin-Bezel 8" Ceiling Grille

Compatible with Proficient Signature & Protege 8" 2-Way, LCR & Twin-Tweeter Ceiling Speakers.

ITEM	U/M
1001-11801	Each

---

## Thin-Bezel 10" Ceiling LCR Grille

Compatible with Proficient Signature 10" Ceiling LCR Speakers.

ITEM	U/M
1001-131031	Each

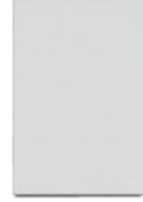


# Replacement Speaker Grilles

## Thin-Bezel 6½" Inwall Grille

**ITEM**  
1001-21601      **U/M**  
Each

Compatible with Proficient Signature & Protege 6½" Inwall Speakers.



## Thin-Bezel 8" Inwall Grille

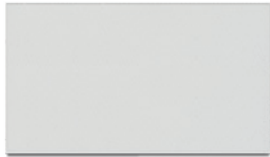
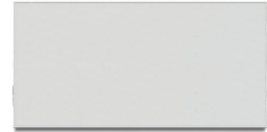
**ITEM**  
1001-21801      **U/M**  
Each

Compatible with Proficient Signature & Protege 8" Inwall Speakers.

## Thin-Bezel 5¼" Inwall LCR Grille

**ITEM**  
1001-22530      **U/M**  
Each

Compatible with Proficient Signature & Protege 5¼" Inwall LCR Speakers.



## Thin-Bezel 6½" Inwall LCR Grille

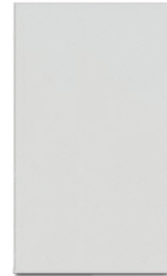
**ITEM**  
1001-22630      **U/M**  
Each

Compatible with Proficient Signature & Protege 6½" Inwall LCR Speakers.

## Thin-Bezel 8" Inwall Sub Grille

**ITEM**  
1001-23085      **U/M**  
Each

Compatible with Proficient Protege IWS85 Dual 8" Inwall Subwoofer.



## Thin-Bezel 10" Inwall Sub Grille

**ITEM**  
1001-24105-2      **U/M**  
Each

Compatible with Proficient Protege IWS105 10" Inwall Subwoofer.

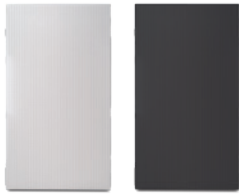
## Thin-Bezel 10" Ceiling Sub Grille

**ITEM**  
1001-13111      **U/M**  
Each

Compatible with Proficient Protege ICS11 10" Ceiling Subwoofer.



# Replacement Speaker Grilles



## AW400 White Grille

Compatible with AW400wht Outdoor/Indoor Speakers.

**ITEM**  
1001-41400      **U/M**  
Pair

## AW400 Black Grille

Compatible with AW400blk Outdoor/Indoor Speakers.

**ITEM**  
1001-41403      **U/M**  
Pair

---

## AW525 White Grille

Compatible with AW525wht Outdoor/Indoor Speakers.

**ITEM**  
1001-41525      **U/M**  
Pair

## AW525 Black Grille

Compatible with AW525blk Outdoor/Indoor Speakers.

**ITEM**  
1001-41527      **U/M**  
Pair



## AW650 White Grille

Compatible with AW650wht Outdoor/Indoor Speakers.

**ITEM**  
1001-41650      **U/M**  
Pair

## AW650 Black Grille

Compatible with AW650blk Outdoor/Indoor Speakers.

**ITEM**  
1001-41653      **U/M**  
Pair

---

## AW830 White Grille

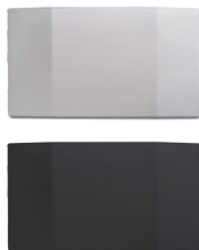
Compatible with AW830wht Outdoor/Indoor Speakers.

**ITEM**  
1001-42830      **U/M**  
Pair

## AW830 Black Grille

Compatible with AW830blk Outdoor/Indoor Speakers.

**ITEM**  
1001-42833      **U/M**  
Pair



## AW500TT White Grille

Compatible with AW500TTwht Twin-Tweeter Outdoor/Indoor Speakers.

**ITEM**  
1001-42500      **U/M**  
Each

## AW500TT Black Grille

Compatible with AW500TTblk Twin-Tweeter Outdoor/Indoor Speakers.

**ITEM**  
1001-42503      **U/M**  
Each

---

## AW600TT White Grille

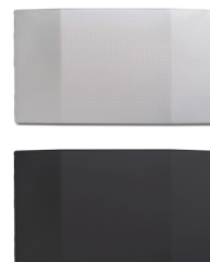
Compatible with AW600TTwht Twin-Tweeter Outdoor/Indoor Speakers.

**ITEM**  
1001-42600      **U/M**  
Each

## AW600TT Black Grille

Compatible with AW600TTblk Twin-Tweeter Outdoor/Indoor Speakers.

**ITEM**  
1001-42603      **U/M**  
Each





PROFICIENT

1800 S McDowell Blvd • Petaluma, CA 94954 • 800.472.5555 • Fax 707.283.5901 • [proficientaudio.com](http://proficientaudio.com)

©2016 Core Brands, LLC. All rights reserved. Proficient® is a registered trademark of Core Brands, LLC, a Nortek company.

*Kevlar is a registered trademark of DuPont*

PB0916-C