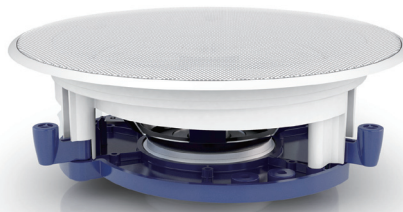
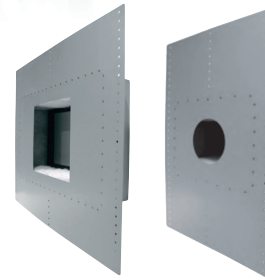


KEF Ci Speaker Accessory Reference Guide

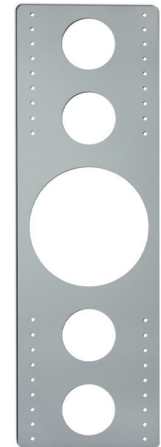


Rough-in Frames (new construction brackets) are used with in-wall and in-ceiling speakers and are available for most models. Installed during the pre-wiring of a new construction installation, they allow the installer to reserve the space in the wall or ceiling and simplify cutting the perfect hole size.

Metal Rear Enclosures (back boxes) are available for most models of KEF Ci Speakers. Installed during the pre-wiring of a new construction installation they provide a sealed enclosure for the loudspeaker and reduce sound transmission to the room behind the speaker.



Rear Enclosures



Rough-in Frames

Specifications

Shape	Round	Round	Round	Round	Round	Round
Size	Ci200R	Ci160R	Ci130R	Ci100R	Ci80R	Ci50R
Cut Out (mm)	Ø240mm	Ø196mm	Ø158mm	Ø118mm	Ø97mm	Ø65mm**
Cut Out (in.)	Ø9.45in.	Ø7.71in.	Ø6.22in.	Ø4.65in.	Ø3.82in.	Ø2.56in.**
Rough-in Frame	RIF200R SP3478AA	RIF160R SP3476AA	RIF130R SP3474AA	RIF100R SP3473AA	RIF80R SP3472AA	N/A
Rear Enclosure	RNC200R SP3467AA	RNC160R SP3465AA	RNC130R SP3463AA	RNC100R SP3462AA	RNC80R SP3461AA	Ci50CAN** SP3509AA
Speakers	Ci200QR Ci200CR Ci200.3QR Ci160QCT* Ci160ST*	Ci160QR Ci160CR Ci160CRds Ci160SR Ci160.2QR Ci160.2FR Ci110FCT* Ci115QCT* Ci160.2FRLT	Ci130QR Ci130CR Ci130.2QR* Ci130.2FR*	Ci100QR ⁺	Ci80.2QR ⁺	Ci50R

Shape	Square	Square	Square	Square	Rectangle	Rectangle
Size	Ci200S	Ci160S	Ci130S	Ci100S	Ci200L	Ci160L
Cut Out (mm)	238 x 238 mm	194 x 194 mm	158 x 158 mm	112 x 112 mm	334 x 238 mm	274 x 194 mm
Cut Out (in.)	9.37 x 9.37 in.	7.64 x 7.64 in.	6.22 x 6.22 in.	4.41 x 4.41 in.	13.15 x 9.37 in.	10.79 x 7.64 in.
Rough-in Frame	RIF200S SP3479AA	RIF160S SP3477AA	RIF130S SP3475AA	RIF100S SP3780AA	RIF200L SP3782AA	RIF160L SP3781AA
Rear Enclosure	RNC200S SP3468AA	RNC160S SP3466AA	RNC130S SP3464AA	RNC100S SP3783AA	RNC200L SP3784AA	RNC160L SP3785AA
Speakers	Ci200QS Ci200.3QS	Ci160QS Ci160CS Ci160CSds Ci160SS Ci160.2QS Ci160.2FS	Ci130QS Ci130CS Ci130.2QS Ci130.2FS	Ci100QS	Ci200QL Ci200CL	Ci160QL Ci160CL Ci160SL

* Due to integrated back can this unit is not compatible with the rear enclosure.

** Ci50R cut out is 70mm (2.76in.) with the rear can. The Ci50 rear can is able to be used in a retro-fit installation

+ Use of metal rear enclosure with these models requires removal of integrated plastic rear can

KEF reserves the right, in line with continuing research and development, to amend or change specifications. E&OE.