



User Guide

Contents



LiveTrek Sentinel tracker



USB Charging Cable with patent magnetic plug

Device Description



Low Battery:

blinking red light

GPS Signal:

blinking blue light

GSM Signal:

blinking green light

- ① Charging Socket ② LED Light ③ SOS Button ④ IMEI Barcode
⑤ IMEI Number

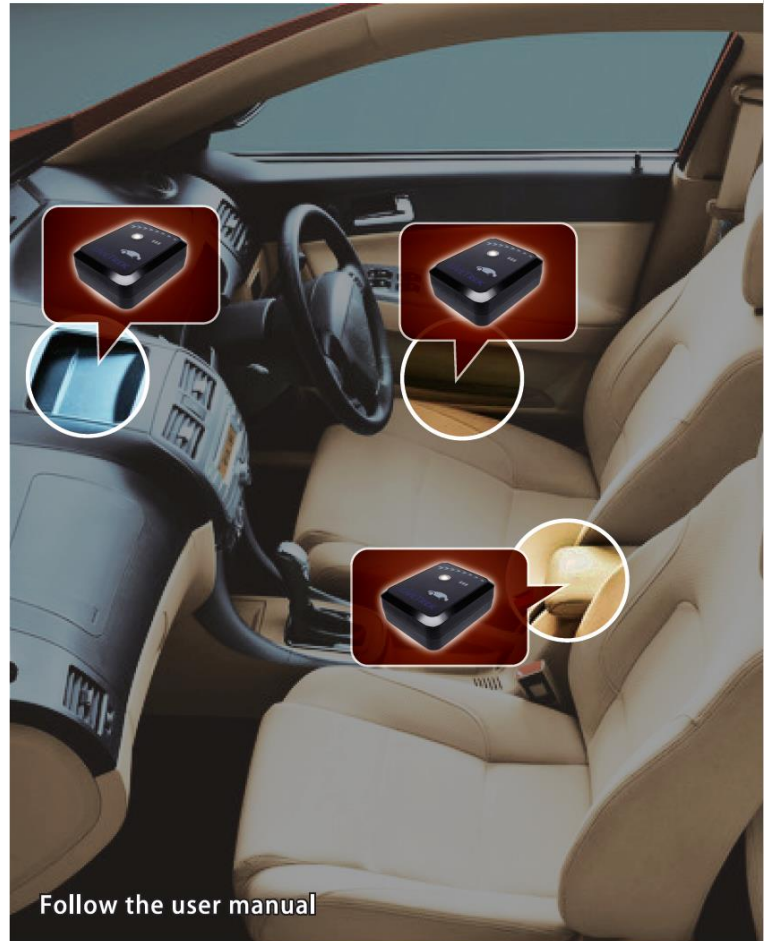
User Guide

SOS:

- ① When in an emergency, press the SOS Button (3) for a second.
- ② When pressed a quick flash of lights will be seen, this means a notification will be sent to the all users of the app,. You can press as many times as you wish in an emergency situation.

Charging:

- ① Use USB Charging Cable with patent magnetic plug.
- ② Link the plug to charging socket.
- ③ When the tracker is charging, the red LED light will light up.
- ④ When fully charged, the red LED light will turn into green.



Follow the user manual

1. SIM Card Set-Up

- * Your LiveTrek Sentinel tracker has been pre-fitted with a SIM card from ALDI that operates on the Telstra mobile network.
- * The APN to allow your tracker to send location data to your smartphone has also already been set up for you.
- * The SIM card has \$5 prepaid credit on it that will generally last at least 3-4 months but the SIM card needs to be activated for the tracker to work. Please follow the instructions on the attached sheet to activate your SIM card.
- * You can add credit to your SIM card at any time by simply logging on to your new ALDI account. **Even with the most frequent location updates \$15 credit should last a full year!**
- * If you prefer to use an alternative SIM card such as Telstra mobile, Vodafone or Optus you can replace the pre-fitted SIM card with the SIM card of your choice. In these cases you will have to set up a new APN specific to the SIM card brand you are using. Go to the website www.trackall.com.au for more detailed instructions on this.



2. Load the free iCAR phone app

For Android, download iCAR – Advanced GPS tracker from the Google Play Store

For iOS (iPhone), download iCAR from the App Store



3. Using the iCAR app

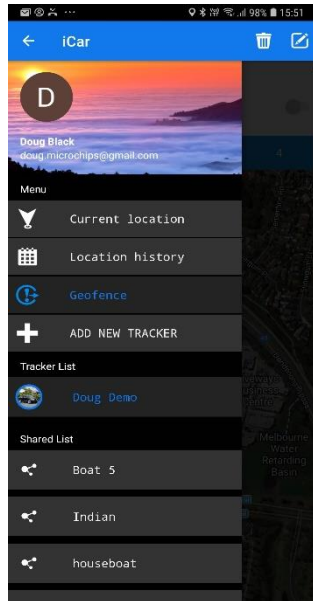
Log-in:

Log in using an existing Google account or create a new Google account to start using the app.



Add New Tracker:

Click the 3 line symbol in top left of the Current Location screen to get to this screen



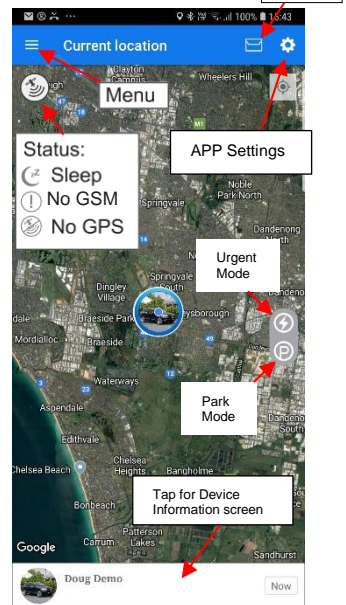
Add New Tracker:

Find IMEI no. on tracker or box and type in or scan barcode

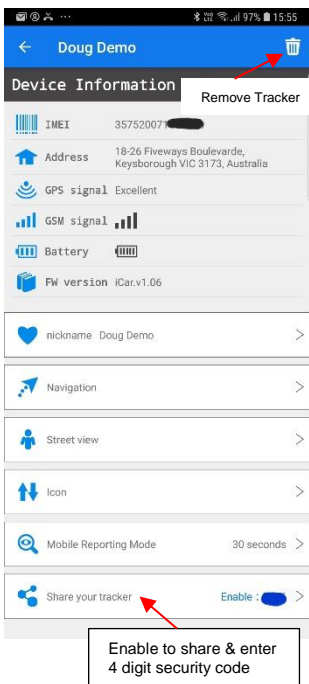


Current Location:

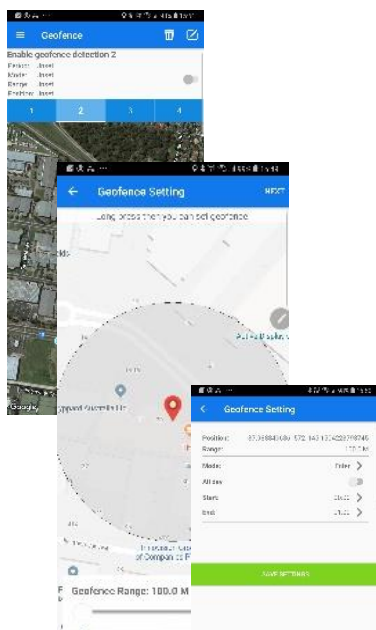
Find IMEI no. on tracker or box and type in or scan barcode



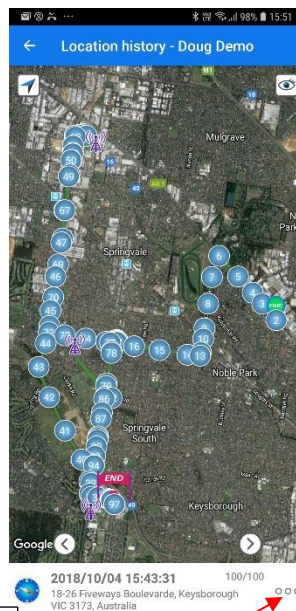
Device Information Screen:



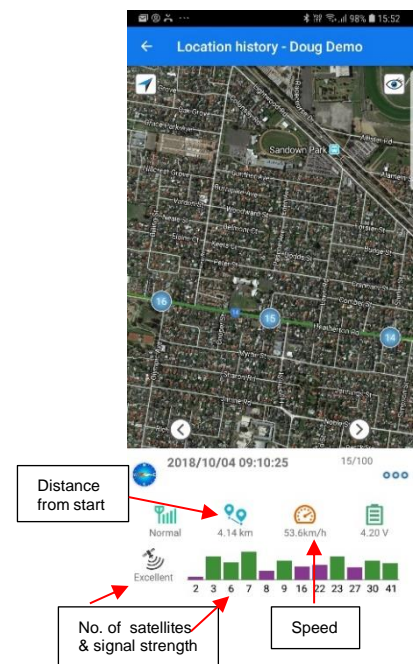
Geofence:



Location History:



Location Point Info:



NOTE:

- As above, after entering the IMEI code it will ask you for a security code... type in 12345678 to complete adding the tracker.
- To share the tracker, Enable & enter a 4 digit security code. The sharer then goes to "Add Tracker" on their app, types in your tracker's IMEI code and then enters that same 4 digit security code. The sharer can only see Current Location and cannot change any settings.
- To vary the **Map Display Mode** go to "APP Settings" on Current Location screen - "Hybrid" is preferred.
- To change the type of **Notification** and to enable **Continuous Alarm** go to "APP Settings".

About GPS accuracy:

Global Positioning System is used as a navigation tool. It is normal to have random accuracy fluctuations due to a number of factors. When the tracker is under shelter or in hilly terrain areas, the accuracy may vary from 2 metres to 50+ metres.

The tracker may not work when under cover, shelter or indoors due to poor GPS signal. GPS signal is best when outdoors in clear view of the sky.

- * Tracker will not work without adequate GSM (mobile phone network) signal. The 3G mobile phone network is required to transmit location data to your phone app.
- * Ensure you always have sufficient credit for data on the SIM card by logging in to your SIM card account.

Tips on using the device

About Global Positioning System (GPS)

- ① GPS signal is best when outdoors ONLY.
- ② As the tracker uses Google maps, not all locations will be accurate. Location accuracy will depend on environmental surroundings and weather.
- ③ If the tracker is used indoors or in bad weather, location inaccuracies can occur of up to 200metres.
- ④ If a window film containing metallic or defogging heating layer is above the tracker it may disturb or even block the GPS signal and effect accuracy.

About Location-Based Service (LBS)

1. LBS positioning means the position of the nearest mobile phone tower - not the actual position of the tracker.
2. In metropolitan areas there are more mobile phone towers so LBS position will be more accurate than in rural or regional areas.
3. Different trackers in the same physical location may show different LBS positions as they are accessing different mobile phone towers to guess position.

NOTE: This product operates using 3G mobile networks. If there is weak or no 3G network coverage, the tracker will not function properly.

About Sleep Mode

1. The device will enter Sleep mode after being still for a few minutes ceasing all network connection and GPS function to save power. When the device senses movement it will resume normal function.
2. The device does not enter Sleep mode when in Power saving Mode (2 hour updates)

For more information contact us at:



www.trackall.com.au

Ph: 0397963165

email: info@microchips.com.au