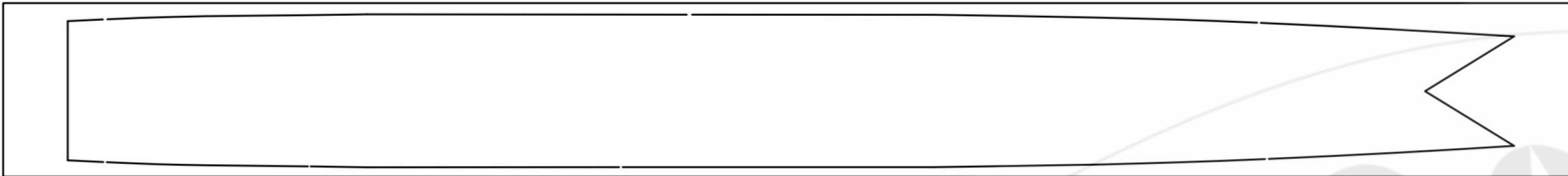


9.5 x 100



9.5 x 100



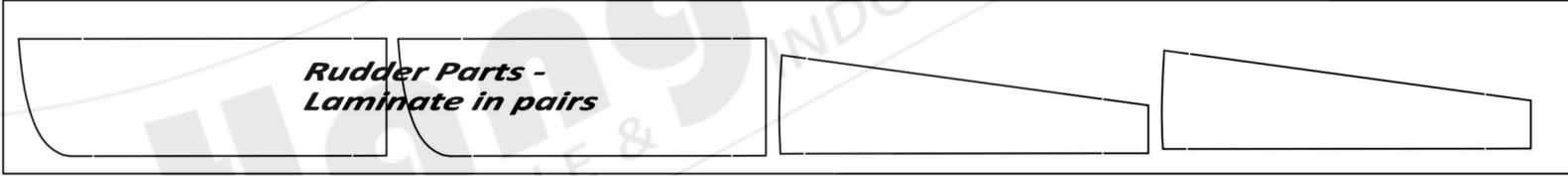
Tailplane Tips
Laminate with 4 x 6.5mm

6.5 x 100



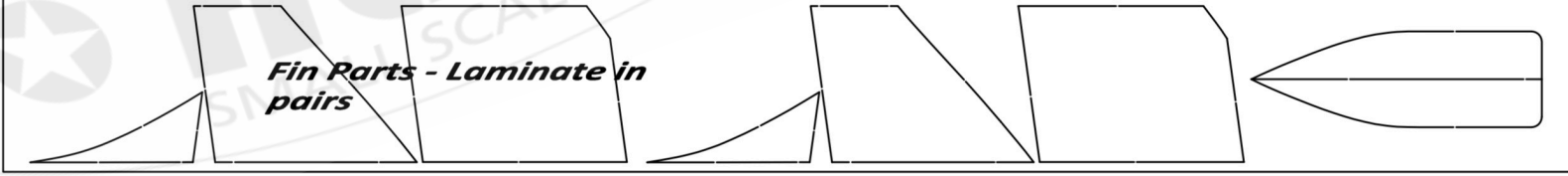
Wing Tips - laminate with 5 x 6.5mm
and 1 x 5.0 mm

6.5 x 100



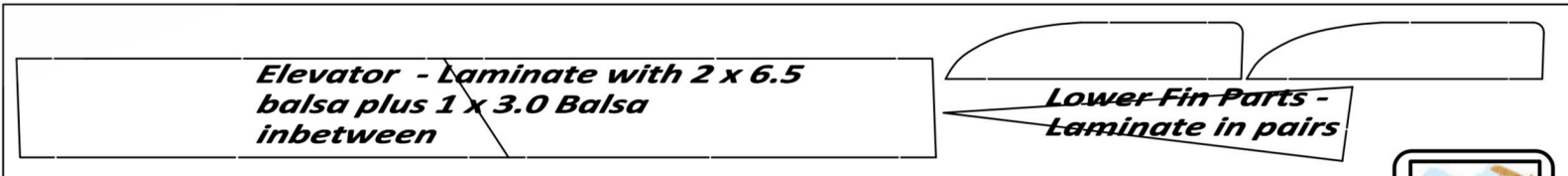
Rudder Parts -
Laminate in pairs

6.5 x 100



Fin Parts - Laminate in
pairs

6.5 x 100



Elevator - Laminate with 2 x 6.5
balsa plus 1 x 3.0 Balsa
inbetween

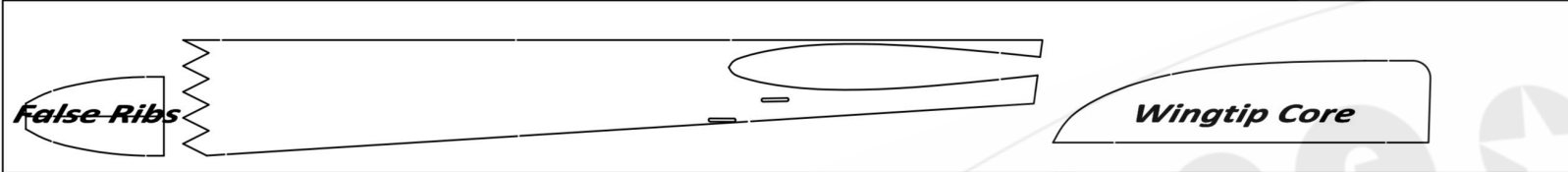
Lower Fin Parts -
Laminate in pairs

6.5 x 100

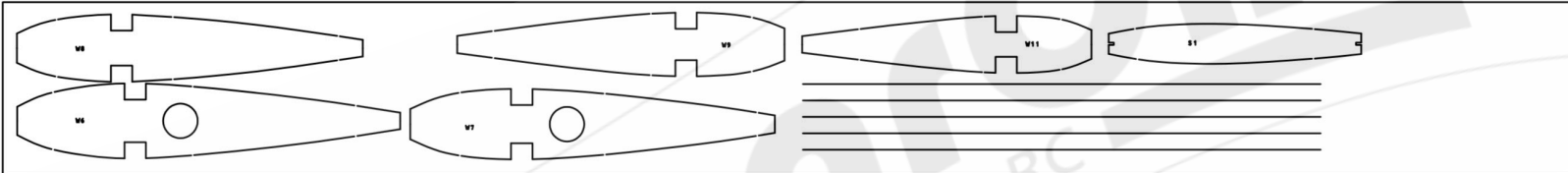




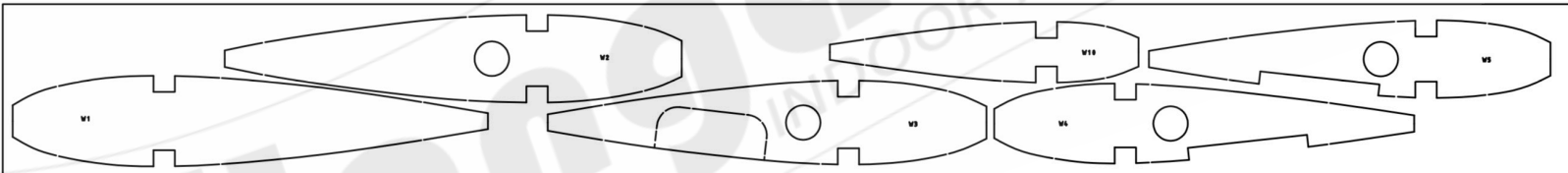
9 x 100



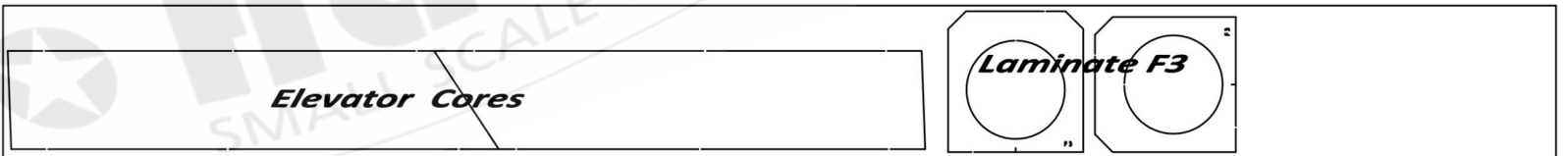
9 x 100



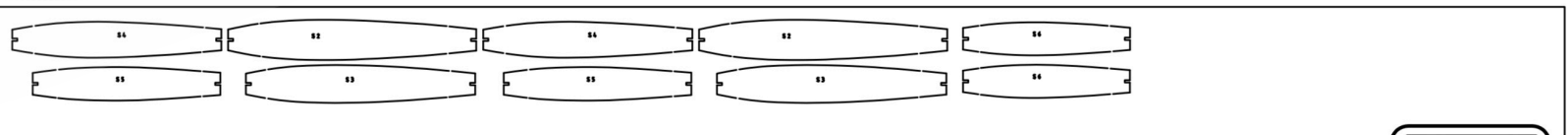
2.5 x 100



2.5 x 100

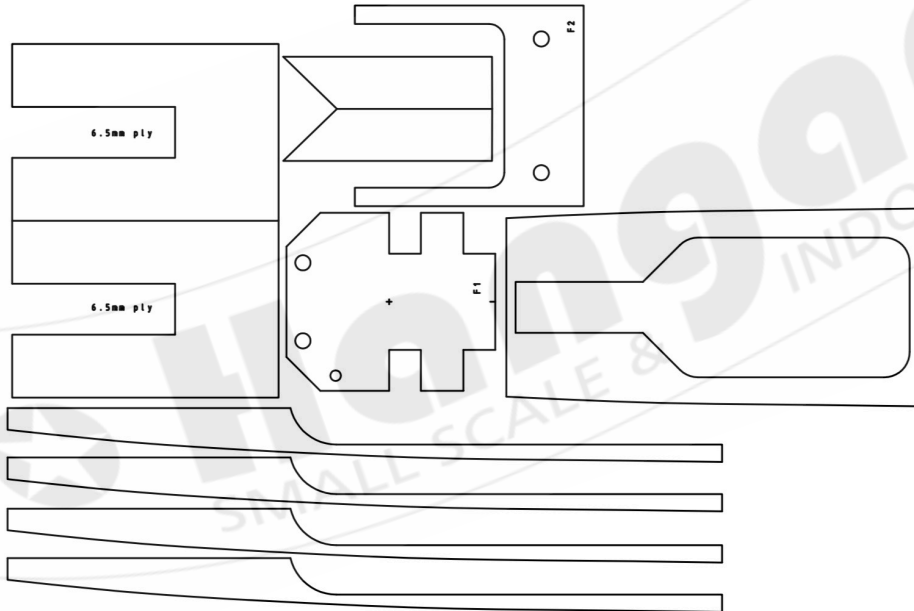
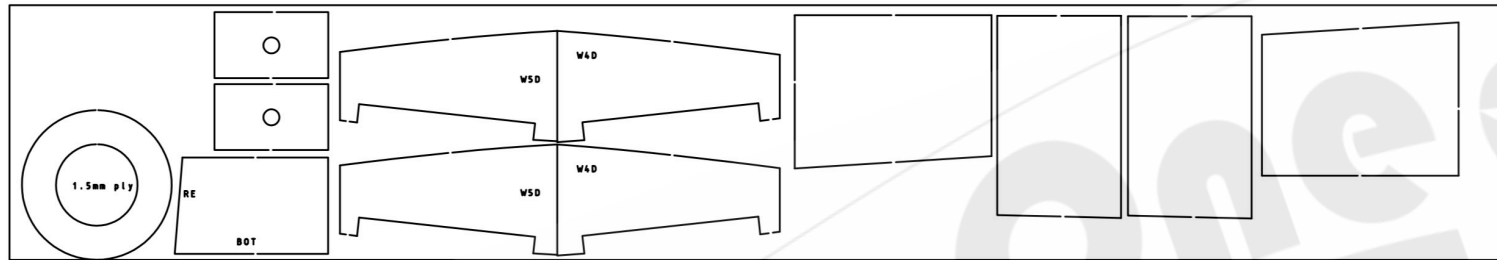
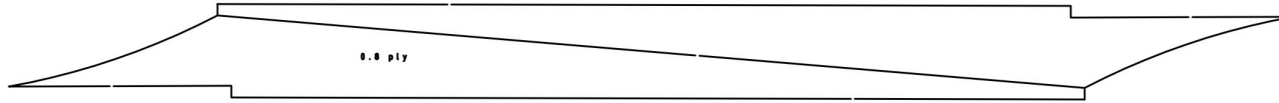


3.0 x 100

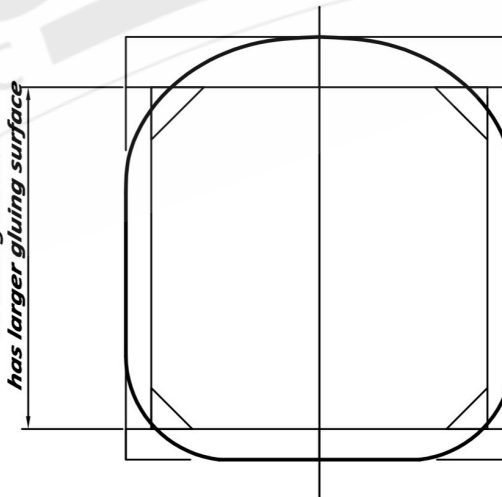


1.5 x 75





*New Sides are extended
so triangle stock
has larger gluing surface*



**Revised Cross Section
through Fuselage.
The 5mm sides have been
raised by 9.5 mm**



UFO Parts List