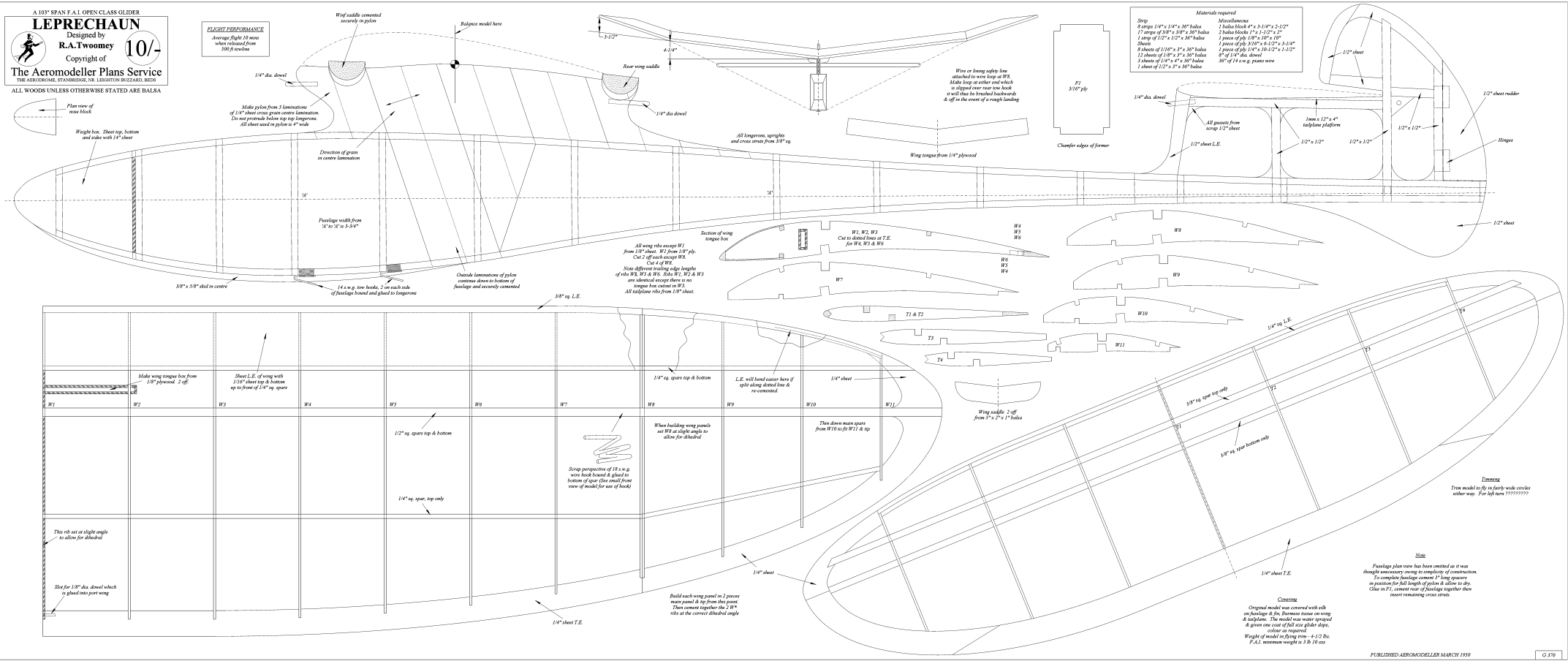


A 103" SPAN F.A.1 OPEN CLASS GLIDER
LEPRECHAUN
 Designed by
R.A. Twoomey
 Copyright of **10/4**
 The Aeromodeler Plans Service
 THE AEROMODEL, STANSBRIDGE, NR. LEIGHTON BUZZARD, BEDS
 ALL WOODS UNLESS OTHERWISE STATED ARE BALSAs

FLIGHT PERFORMANCE
 Average flight 10 min
 when released from
 500 ft machine



- Materials required**
- | Strip | Miscellaneous |
|--------------------------------------|----------------------------------------|
| 8 strips 1/4" x 1/4" x 36" balsa | 1 balsa block 4" x 1/4" x 2-1/2" |
| 17 strips of 3/8" x 3/8" x 36" balsa | 2 balsa blocks 1" x 1/2" x 3" |
| 1 strip of 1/2" x 1/2" x 36" balsa | 1 piece of ply 3/8" x 10" x 10" |
| 8 sheets of 1/16" x 3" x 36" balsa | 1 piece of ply 3/16" x 6-1/2" x 2-1/4" |
| 12 sheets of 1/16" x 3" x 36" balsa | 8" of 1/4" dia. dowel |
| 3 sheets of 1/4" x 3" x 36" balsa | 36" of 14 g. piano wire |
| 1 sheet of 1/2" x 3" x 36" balsa | 1 sheet of 1/2" x 3" x 36" balsa |

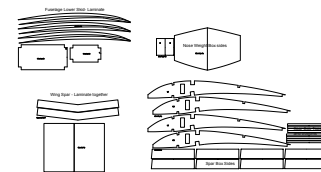
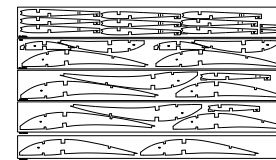
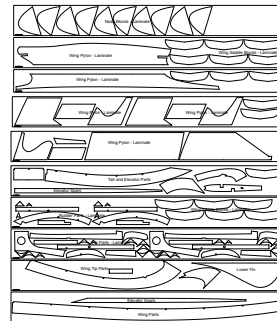
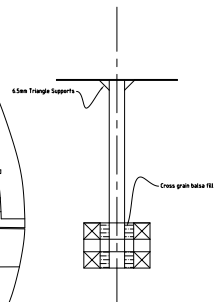
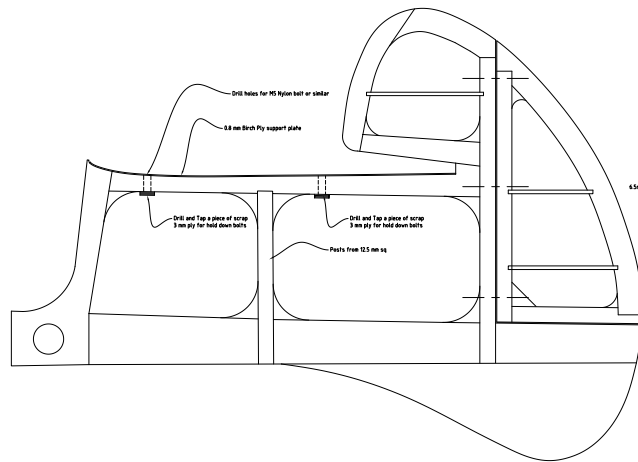
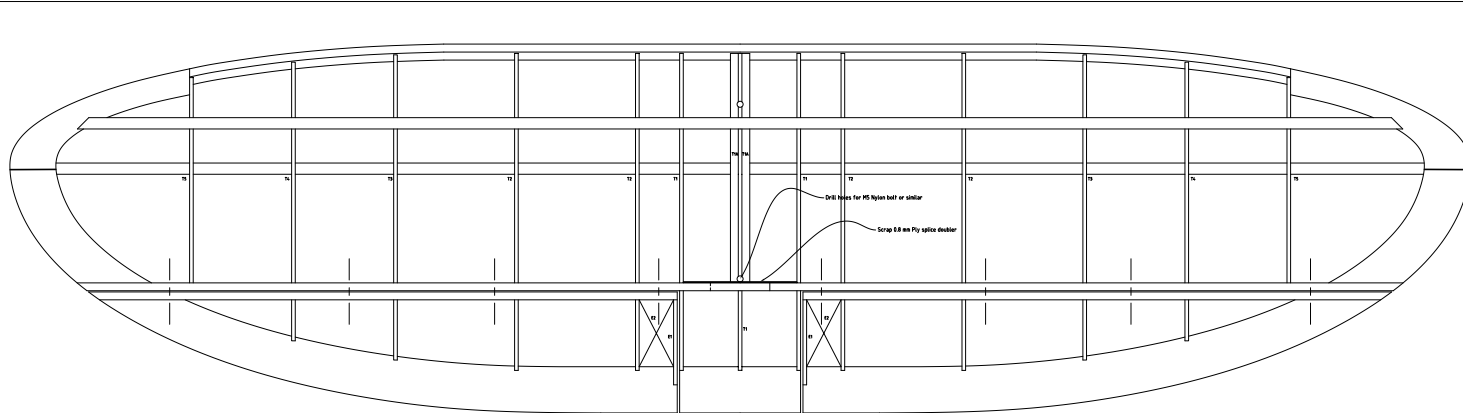
Wire or string safety line attached to wire loop at W8. Make loop at other end which is slipped over nose one hook it will then be braked backwards & off in the event of a rough landing

All wing ribs except W1 from 1/2" balsa. W1 from 1/8" ply. Cut 1/2" off each except W8. Cut 4" off W8. Note different trailing edge lengths of ribs W8, W9, W10, W11, W12 & W13 are identical except there is no longer one chord at W8. All tailplane ribs from 1/8" sheet.

Strip
 8 strips 1/4" x 1/4" x 36" balsa
 17 strips of 3/8" x 3/8" x 36" balsa
 1 strip of 1/2" x 1/2" x 36" balsa
 8 sheets of 1/16" x 3" x 36" balsa
 12 sheets of 1/16" x 3" x 36" balsa
 3 sheets of 1/4" x 3" x 36" balsa
 1 sheet of 1/2" x 3" x 36" balsa

Miscellaneous
 1 balsa block 4" x 1/4" x 2-1/2"
 2 balsa blocks 1" x 1/2" x 3"
 1 piece of ply 3/8" x 10" x 10"
 1 piece of ply 3/16" x 6-1/2" x 2-1/4"
 8" of 1/4" dia. dowel
 36" of 14 g. piano wire
 1 sheet of 1/2" x 3" x 36" balsa

Comments
 Original model was covered with silk on fuselage & fin. Successive users on using & building. The model was water proofed & given one coat of full size glider dope, colour as required.
 Weight of model in flying trim = 4.12 lbs.
 C.G. minimum weights is 3.50 lbs. net



HangarOne Leprechaun
Modification to Fin, Rudder,
Tailplane and Elevator