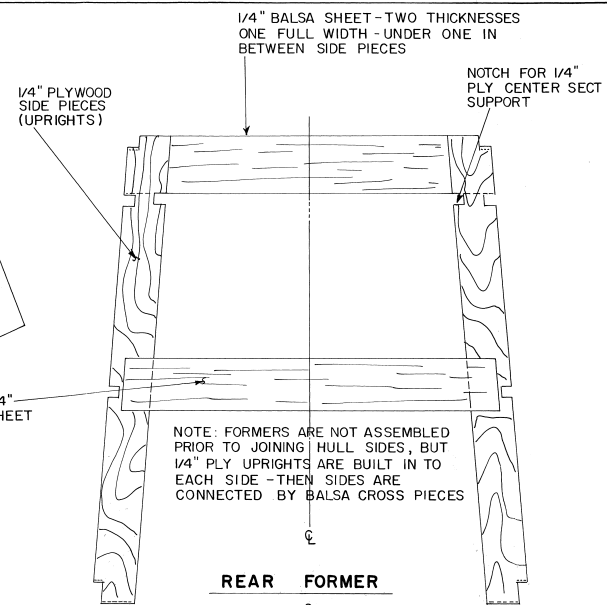
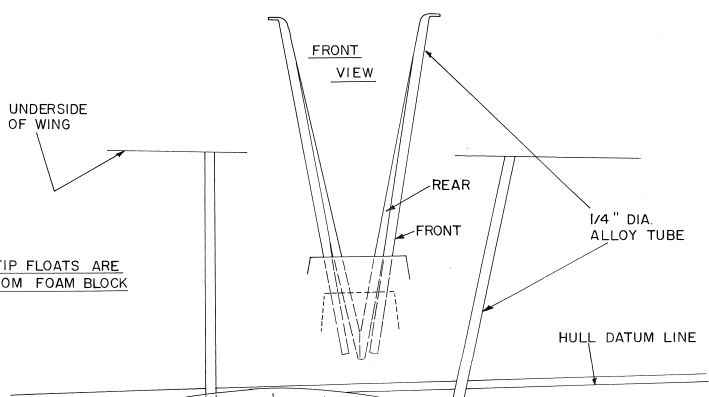


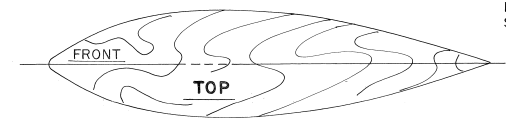
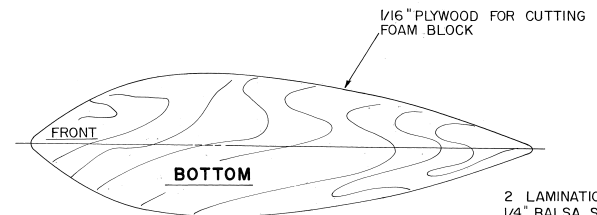
APPROXIMATE SIZE & SHAPE PATTERN CUT 1/4" OVERSIZE AND ADJUST AS REQUIRED



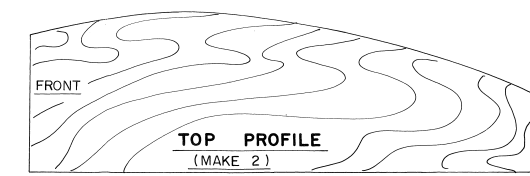
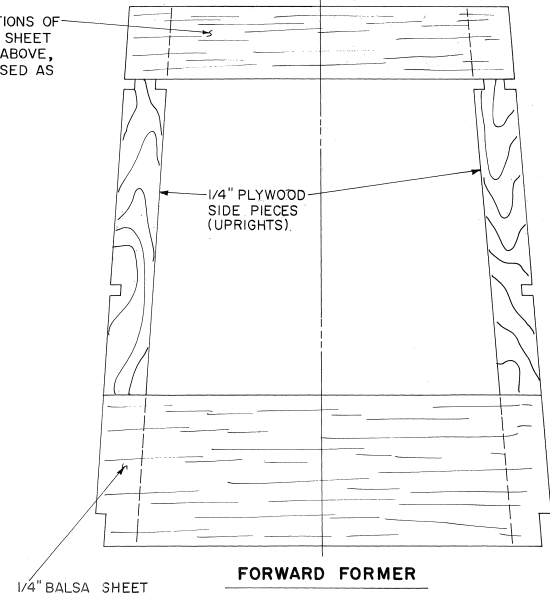
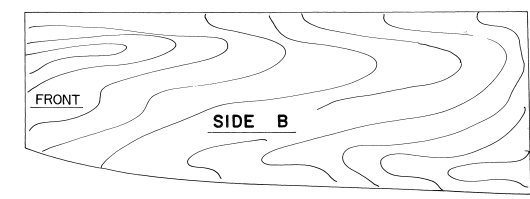
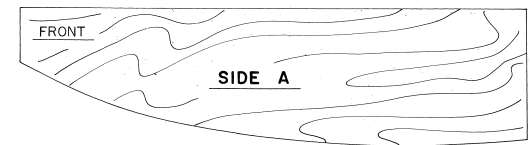
NOTE: FORMERS ARE NOT ASSEMBLED PRIOR TO JOINING HULL SIDES, BUT 1/4" PLY UPRIGHTS ARE BUILT IN TO EACH SIDE - THEN SIDES ARE CONNECTED BY Balsa CROSS PIECES



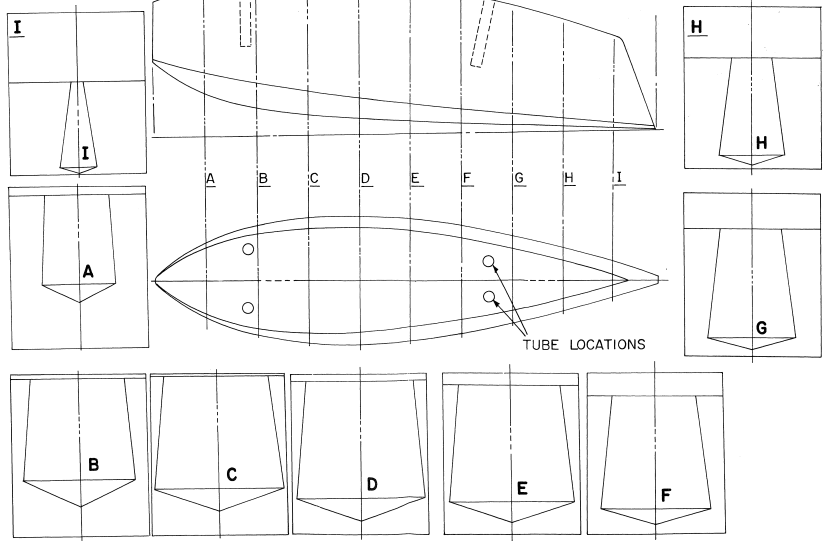
NOTE: TIP FLOATS ARE CUT FROM FOAM BLOCK



2 LAMINATIONS OF 1/4" Balsa SHEET BUILT AS ABOVE, BUT REVERSED AS SHOWN



**TIP FLOAT TEMPLATES**



**TIP FLOAT CROSS SECTIONS**



© RCM ALL COMMERCIAL RIGHTS RESERVED

**ANDERSON KINGFISHER**

DESIGNED & DRAWN BY D. TAPSFIELD INKED BY JOE DEMARCO

