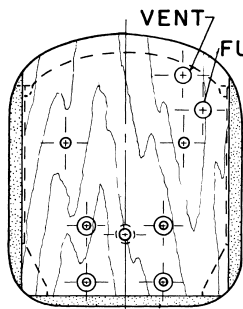
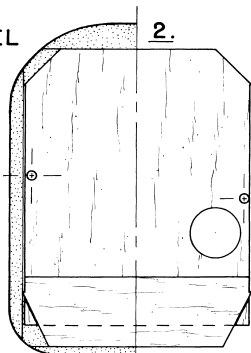


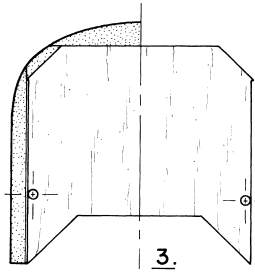
Mark III Kwik-Fli
 FLYING WEIGHT : 6 LBS.
 DO NOT EXCEED · 6-1/2 LBS
 DESIGNED & DRAWN BY :
 PHIL KRAFT
 INKED FOR M.A.N. BY
 BOB CHORONZUK



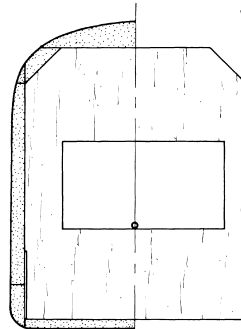
1.
1/4" PLYWOOD
FIREWALL



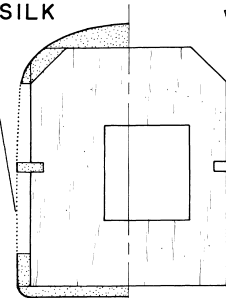
2-A.
1/4" SHT. Balsa
BULKHEADS



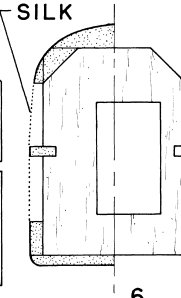
3.
3/16" SHT. Balsa
BULKHEAD



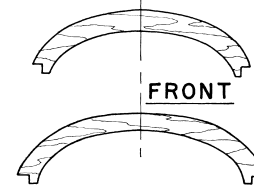
4.
3/16" SHT. Balsa
BULKHEAD



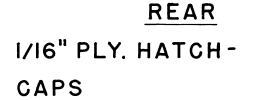
5.
3/16" SHT. Balsa
BULKHEAD



6.
3/16" Balsa

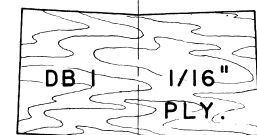


FRONT

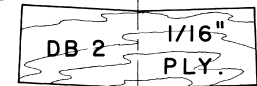


REAR

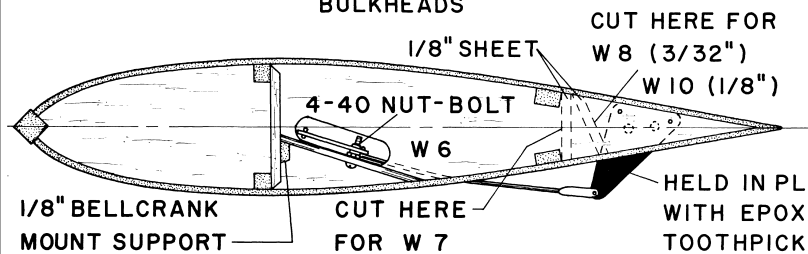
1/16" PLY. HATCH-
CAPS



DB 1 1/16"
PLY.



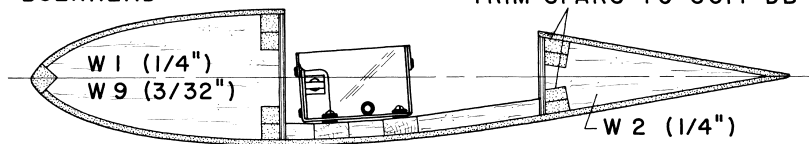
DB 2 1/16"
PLY.



1/8" BELLCRANK
MOUNT SUPPORT

CUT HERE
FOR W 7

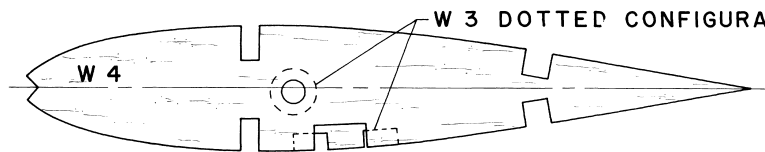
HELD IN PLACE
WITH EPOXY &
TOOTHPICKS



W 1 (1/4")
W 9 (3/32")

W 2 (1/4")

TRIM SPARS TO SUIT DB 2



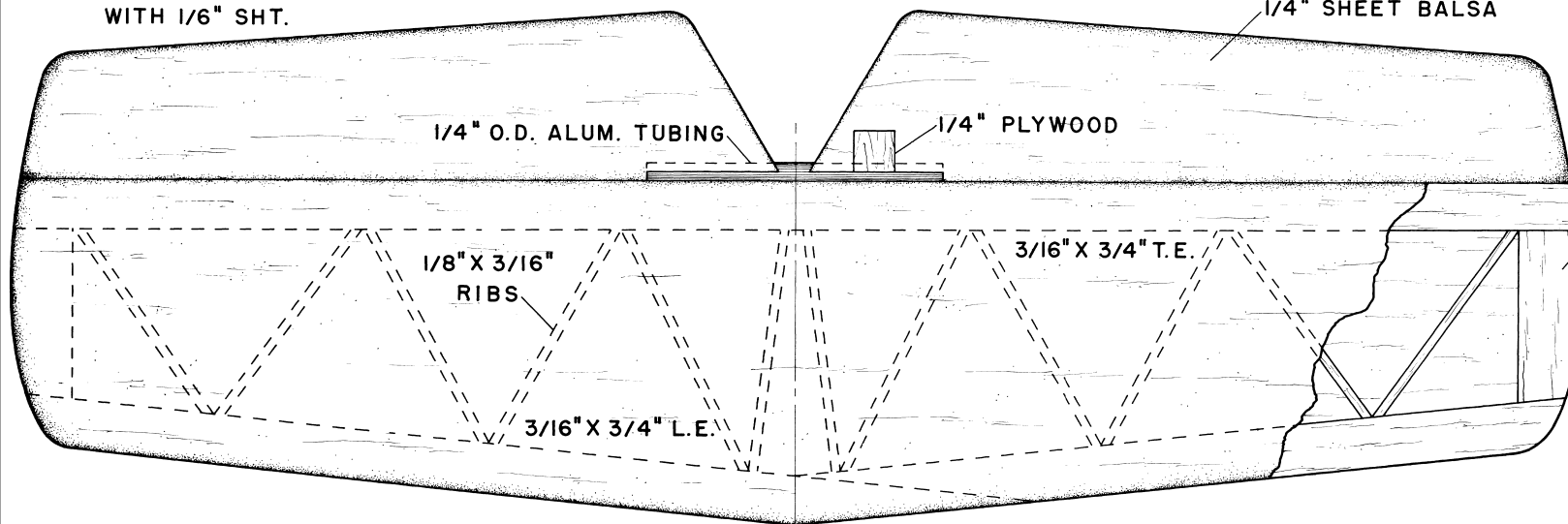
W 3 DOTTED CONFIGURATION

W 4

W 5 SAME AS W 4 LESS L.G. NOTCH & HALF OF SPAR NOTCH

W 11 DOTTED CONFIGURATION 1/8" PLY.
W 12 SOLID CONFIGURATION 3/32" PLY.

PLANK TOP & BOTTOM
WITH 1/16" SHT.



1/4" O.D. ALUM. TUBING

1/4" PLYWOOD

1/8" X 3/16"
RIBS

3/16" X 3/4" T.E.

3/16" X 3/4" L.E.

1/4" SHEET Balsa

3/16" SHT.
TIP

DETAIL FOR
LAPPED SPAR.
BUILD WING ON
JIG.



KWIK-FLI MARK III

PHIL KRAFT DESIGNED 1967 NATIONALS WINNER
AND 1968 WORLD CHAMPIONSHIP WINNER REDRAWN
BY RICHARD BROWNING IN CAD FORMAT

