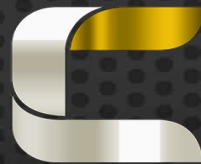


KTM 390 ADV



**WINDSHIELD
INSTALLATION GUIDE**

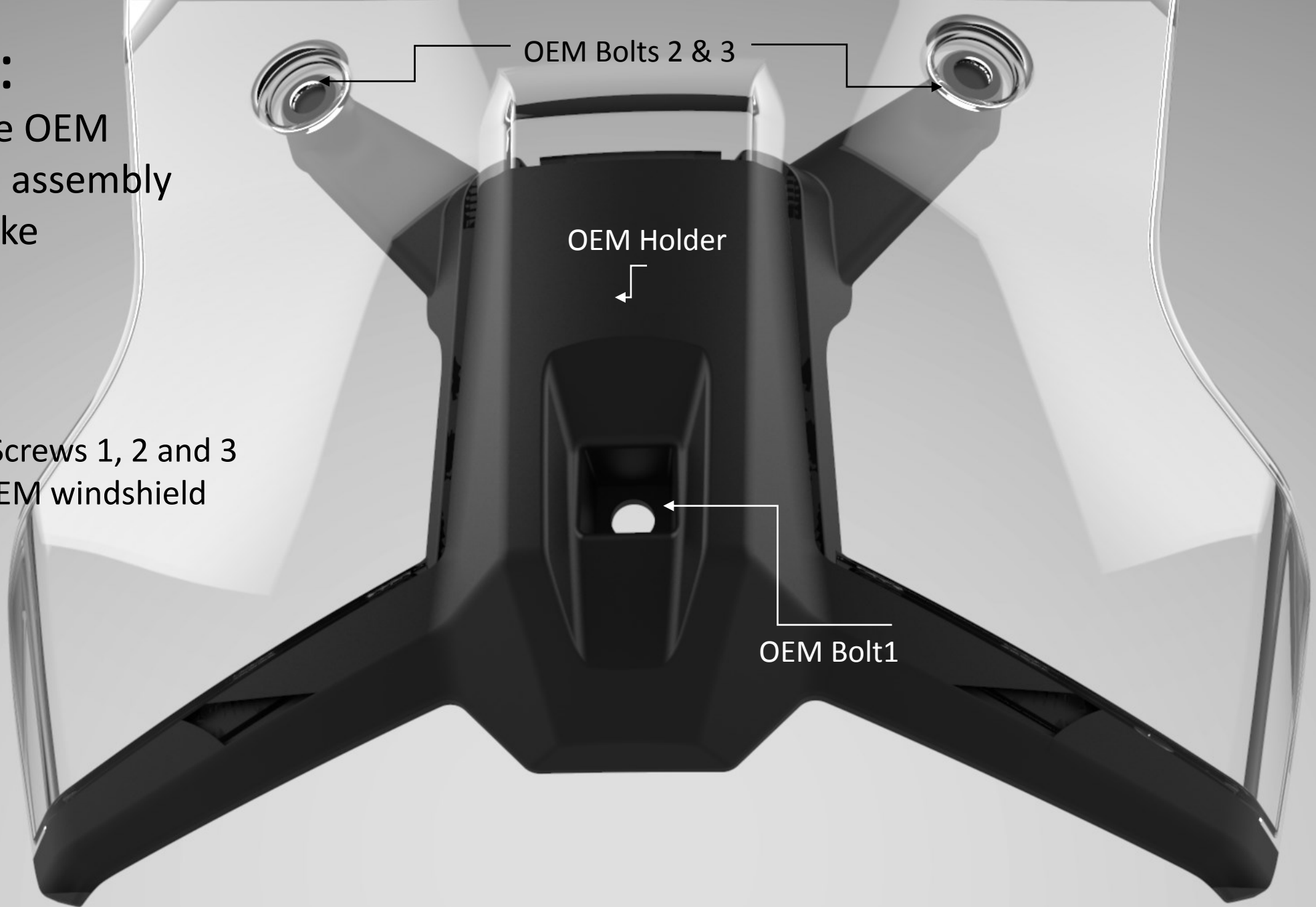
ITEMS IN THE PACKAGE

1. Poly-Carbonate Windscreen(CRWSADV-PT01) – 1 No (2 if you have opted for dual shield)
2. Aluminium Angle Adjuster Block (CRWSADV-PT02) – 1 No
3. Aluminium Stabilizer Block (CRWSADV-PT03) – 1 No
4. Aluminium Stabilizer Arms (CRWSADV-PT04) – 2 Nos (Left and Right)
5. Aluminium GPS Block (CRWSADV-PT05)– 1 No
6. Anti Vibration Rubber Grommets (CRWSADV-PT06)– 2 Nos (For Top Holes)
7. M5X35 Stainless Steel Bolt for Windshield with 1X M6 and 2X M8 Washers
8. M6X25 Stainless Steel Bolts with M6 washer each for Aluminium Stabilizer Arm (Top Holes) – 2 Nos
9. M5X10 Screws for Aluminium Stabilizer Arms with M6 washers (Bottom Holes) – 2 Nos
- 10.M6X15 Stainless steel screws for Stabilizer Block with Washers) – 4 Nos

STEP 1:

Remove the OEM
Windshield assembly
from the bike

Remove the Screws 1, 2 and 3
to take the OEM windshield
assembly out



STEP 2:

Remove the OEM
Windshield part
from Holder

OEM Windshield Holder
(Not part of Package)

Notch 1

Instructions on the next page

Notch 2



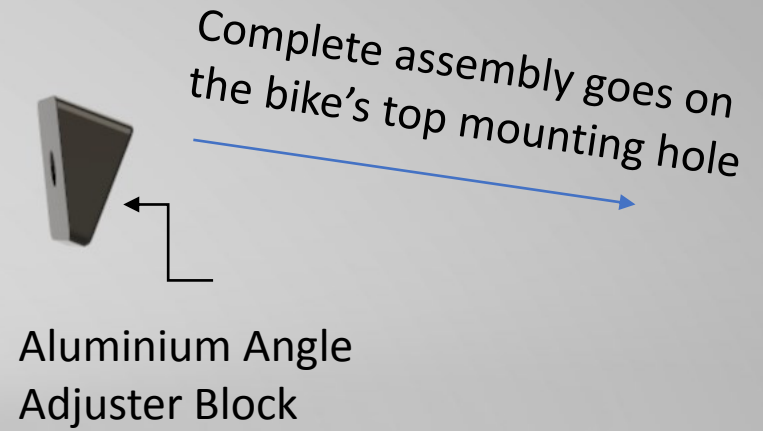
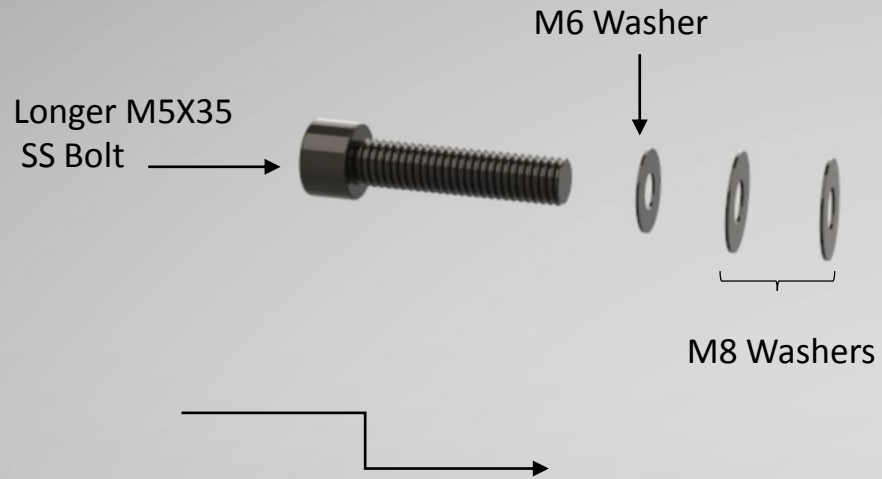
Carefully press the Notches on each side of the holder which are holding the windshield in place. Use the smallest Screw Driver you can find. Make sure that you don't rush this step. Any excess force may break the clear part as it is acrylic.

Once the holding notch is outside its cavity, pull out the windshield clear piece gently upwards. Do this on one side at a time until both the sides are out of the holder. Then pull the entire windshield part upwards to separate Clear and Black Parts.

Install Carbon Racing[®] Windshield exactly in the reverse order. No need to use any tools.

STEP 3:

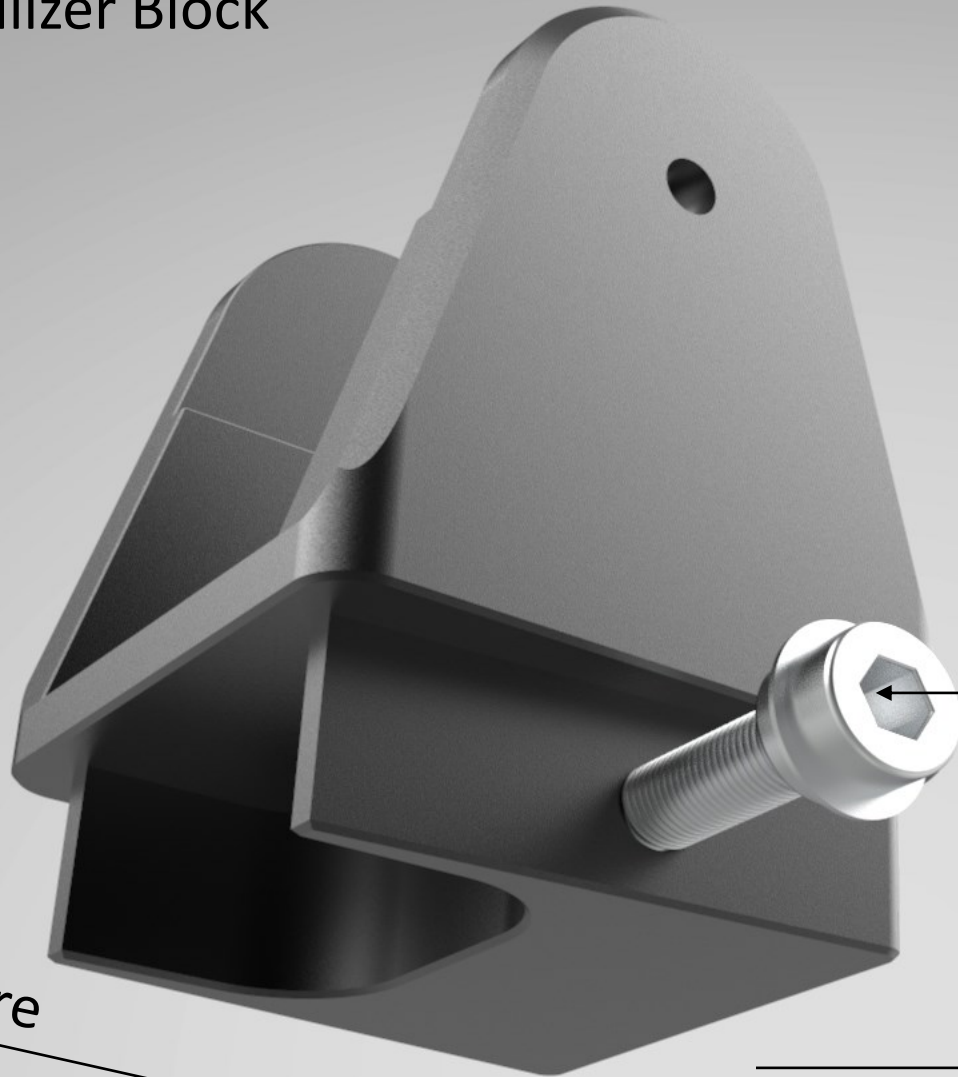
Install the new assembly on the bike



Install exactly like this.
Same washer sequence and same angle adjuster orientation

STEP 4:

Install the Stabilizer Block
on the bike



M6 SS bolts with
M6 Washers both sides

Drive the bolts very slowly
first couple of threads, as wrong threading
will damage the threads in the block.
Exercise caution and make sure you
are driving the bolt very slowly

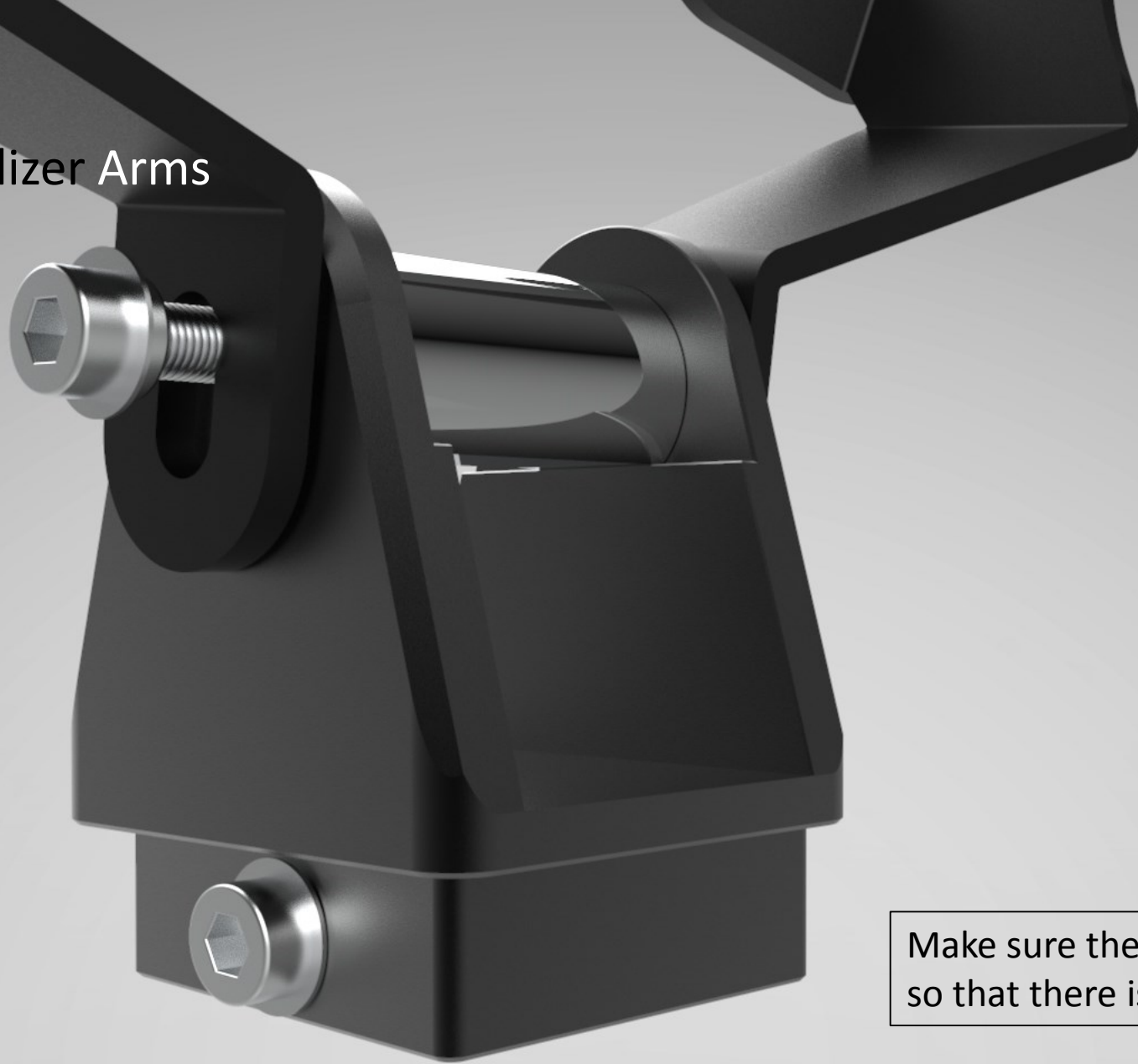
Windshield Here

Rider Here

STEP 5:

Install the Stabilizer Arms

As shown here

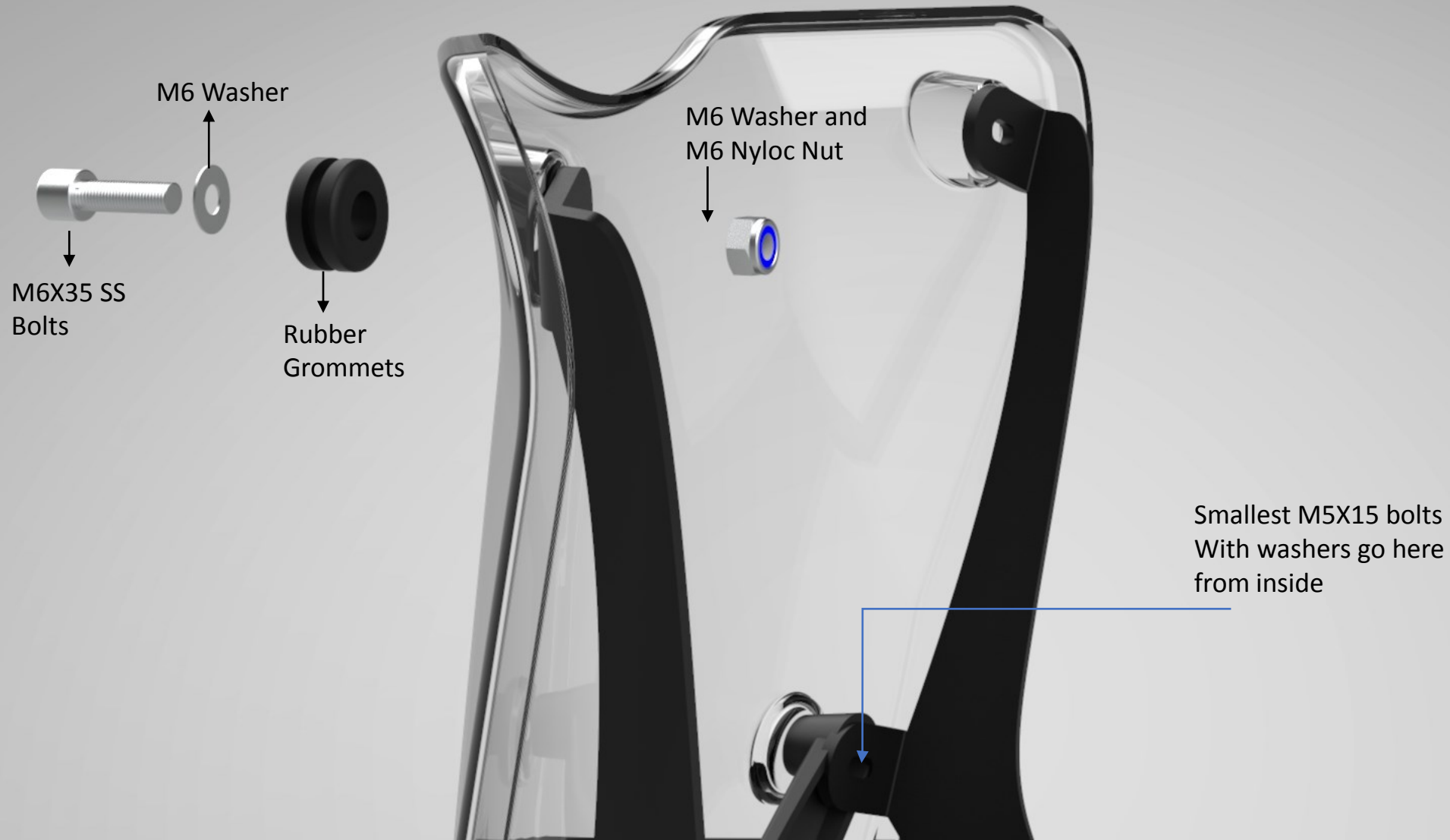


Make sure the bolts are threaded properly so that there is no damage to the threads

STEP 6:

Install the Stabilizer Arms

As shown here



THAT'S ALL FOLKS

NOW LET THE WHEELS ROLL

The background features a dark grey, textured surface with a grid of small dots. Two prominent, glowing gold ribbons curve across the scene, one from the top left and another from the bottom right, both emitting a bright light flare. The overall aesthetic is sleek and high-tech.

CARBON RACING

Experience The Quality