

SPEED. Square it Up!

Point-to-Point Swag Pattern Drafting Tool

©2021 Ann K Johnson

Offer the beauty of Point-to-Point swags to your clients

Simple to fabricate!

Dress up a simple stationary panel - they can be fun or elegant.

Soften a window with point-to-point swags as a valance.



The Square It Up! tool makes drafting point-to-point swag patterns incredibly easy for surprising flexibility in widths and lengths.

It also is a useful ruler in framing fabric pattern motifs for pillows and box pleat valances.

Available for purchase at
www.WorkroomMarketplace.com



In the Package:

3 acrylic rulers:

- L - left
- C - center
- R - Right

2 bolts

4 washers

2 knobs

Hook and loop strap

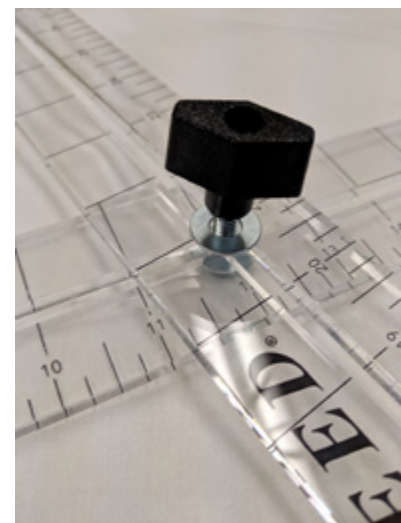
Instructions

How to assemble:

- Place left (L) ruler vertically to your left.
- Place center (C) ruler horizontally in front of you, on top of the left ruler.
- Place a washer on a bolt and insert bolt from bottom through slits in both rulers, then place second washer on bolt and attach a knob.
- Place right (R) ruler vertically to your right, under the center (C) ruler.
- Place a washer on a bolt and insert bolt from bottom through slits in both rulers, then place a second washer on bolt and attach a knob.

To store:

- Loosen the knobs and fold the rulers into a stack.
- Tighten the knobs to secure.
- Wrap hook and loop strap around the middle of the stack.
- Hang on a nail through the center slit.



Visit

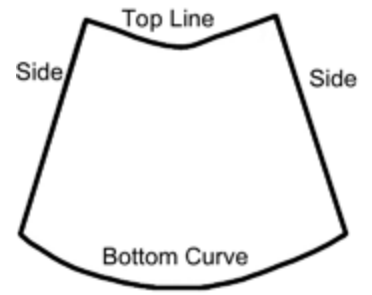
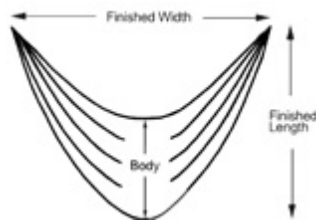
www.youtube.com/theworkroomchannel
Product Demo: Square It Up

Watch step-by-step to assemble the tool, and how to use it to draft a perfect point-to-point swag pattern

Point-to-Point Swag Worksheet

Design Dimensions - Drape weight chain to simulate finished dimensions

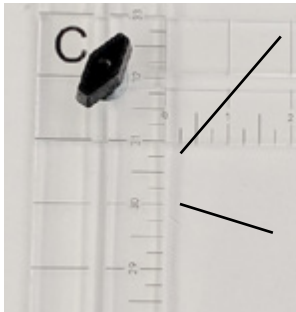
Finished Width: _____
 Finished Length: _____
 Body: _____



Pattern Dimensions:

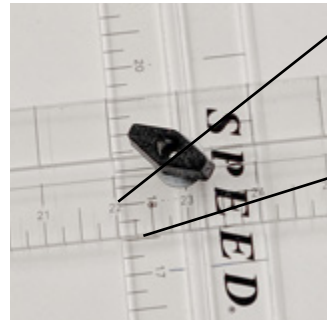
Top Line: _____ (Measure weight chain simulating top fold)
 Bottom Curve: _____ (Measure weight chain simulating bottom fold)
 Side: _____ ((Number of folds x size of folds) + 2")

Draw the pattern using the Square it Up! tool



Step 1: Loosen the screw on left (L) leg and slide it down to the zero (0) mark on the center (C) leg.

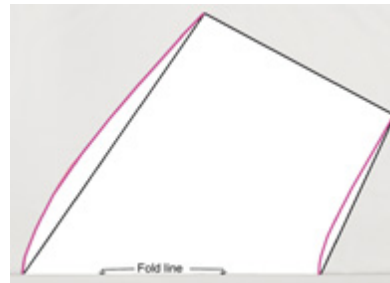
Divide bottom curve length on worksheet by 2. (We draw half the pattern on the fold of the fabric)
 Slide the left (L) leg up to that measure at the corner of the two legs and lock in the screw.



Step 2: Slide the right (R) leg to the side measure on the center (C) leg.
 Divide the top curve length by 2.
 Slide the right (R) leg to that number at the corner of the two legs and lock in the screw.



Step 3: Fold a piece of lining in half - either straight or on bias.
 Place the tool on the lining with the zero marks on the right (R) and left (L) legs at the fold in the fabric.
 Be sure you have the zero mark at the fold and not the corner of the ruler

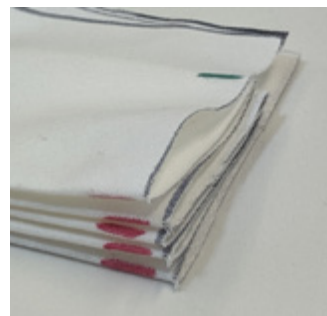


Step 4: The tool will form this shape. (black lines in picture).
 Trace the inside of the tool along all three legs and remove tool.
 Soften the sharp center points of the top fold and bottom curve (red lines in picture).
 Cut out your pattern.

Test the pattern:



Step 5: Mark both sides of pattern as follows:
 Mark 1" off each end for seam allowance (green marks)
 Mark the folds (black marks)
 Mark the center of each fold (red marks)



Step 6: Pleat the sides.
 Keep edges perfectly aligned.
 Secure the stacks with binder clips or staples



Step 7: Insert drapery pins in the stack 1/2" from the front of the stack and hang at finished width.
 Dress down the folds. Trim the bottom curve to shape if necessary. Do not trim away a seam allowance.
 Pattern will be 1-2" longer than specified. This will be taken up by seam allowances on the finished swag.

