

**BABE**  
ORIGINAL

**BABE LASH®**

# ESSENTIAL SERUM

**WARNING:** For external use only. Keep out of reach of children. Only apply with applicator. Do not share applicator. Secure lid tightly after each use. Avoid getting in eyes; if so, immediately rinse with cool water. Do not use if pregnant or nursing, undergoing treatment for glaucoma or cancer, or if you have ever experienced conjunctivitis, dry eyes, eye infections, styes, irritation from other cosmetics applied in the eye area, or any eye-related disorder or illness. Discontinue use immediately if irritation occurs. If symptoms persist, seek medical attention.



**INGREDIENTS:** Aqua (Water), Glycerin, Panthenol, Sodium Citrate, Leuconostoc / Radish Root Ferment Filtrate, Alanine, Alcohol, Arbutin, Arginine, Aspartic Acid, Biotin, Calcium Gluconate, Caprylyl Glycol, Chamomilla Recutita (Matricaria) Flower Extract, Ethylhexylglycerin, Gluconolactone, Glycine, Hexylene Glycol, Histidine, Hydrolyzed Glycosaminoglycans, Hydroxyethylcellulose, Isoleucine, Sodium Lactate, Magnesium Ascorbyl Phosphate, Panax Ginseng Root Extract, PCA, Valine, Phenylalanine, Polydextrose, Polysorbate 20, Proline, Propylene Glycol, Serine, Vitis Vinifera (Grape) Seed Extract, Sodium Hyaluronate, Isopropyl Cloprostenate, Yeast Extract, Sodium PCA, Threonine, Tocopheryl Acetate, Triethanolamine, Phenoxyethanol, Sodium Benzoate, Sodium Metabisulfite.

**BABE**  
ORIGINAL

**BABE LASH®**

# ENHANCING CONDITIONER

**WARNING:** For external use only. Keep out of reach of children. Only apply with applicator. Do not share applicator. Secure lid tightly after each use. Do not dilute with any additive. Discontinue use immediately and contact your doctor if irritation or other side effects occur.



**INGREDIENTS:** Aqua (Water), Glycerin, Butylene Glycol, Panthenol, Sodium Citrate, Leuconostoc / Radish Root Ferment Filtrate, 1,2-Hexanediol, Acetyl Tetrapeptide-3, Alanine, Arbutin, Arginine, Aspartic Acid, Benzoic Acid, Biotin, Calcium Gluconate, Caprylyl Glycol, Chamomilla Recutita (Matricaria) Flower Extract, Dextran, Ethylhexylglycerin, Gluconolactone, Glycine, Hexylene Glycol, Histidine, Hydrolyzed Glycosaminoglycans, Hydroxyethylcellulose, Isoleucine, Magnesium Ascorbyl Phosphate, Myristoyl Pentapeptide-17, Panax Ginseng Root Extract, PCA, Valine, Phenylalanine, Polydextrose, Polysorbate 20, Proline, Propylene Glycol, Serine, Vitis Vinifera (Grape) Seed Extract, Sodium Hyaluronate, Trifolium Pratense (Clover) Flower Extract, Yeast Extract, Sodium PCA, Threonine, Tocopheryl Acetate, Triethanolamine, Sodium Lactate, Phenoxyethanol, Sodium Benzoate, Sodium Metabisulfite.

**BABE**  
ORIGINAL

**BABE LASH®**

# VOLUMIZING MASCARA

**WARNING:** For external use only. Keep out of reach of children. Only apply with applicator. Do not share applicator. Secure lid tightly after each use. Do not dilute with any additive. Discontinue use immediately and contact your doctor if irritation or other side effects occur.



**INGREDIENTS:** Aqua (Water), Copernicia Cerifera (Carnauba) Wax, Cyclopentasiloxane, Oryza Sativa (Rice) Bran Wax, Hydrogenated Olive Oil Stearyl Esters, Alcohol Denat., Palmitic Acid, Stearic Acid, Triethanolamine, Acacia Senegal Gum, Euforbia Cerifera (Candelilla) Wax, Propylene Glycol, Phenoxyethanol, Glycerin, VP/VA Copolymer, Aminomethyl Propanediol, Panthenol, Polyvinyl Alcohol, Chlorphenesin, Ascorbyl Palmitate, Ethylhexylglycerin, Hydrolyzed Ceratonia Siliqua Seed Extract, Zea Mays (Corn) Starch, Potassium Sorbate, Sodium Benzoate, Polyquaternium-7, Biotinoyl Tripeptide-1, Guar Hydroxypropyltrimonium Chloride, Iron Oxides (CI 77499).

**BABE**  
ORIGINAL

**BABE LASH®**

# ENRICHING MASCARA

**WARNING:** For external use only. Keep out of reach of children. Only apply with applicator. Do not share applicator. Secure lid tightly after each use. Do not dilute with any additive. Discontinue use immediately and contact your doctor if irritation or other side effects occur.



**INGREDIENTS:** Aqua (Water), Oryza Sativa Cera (Oryza Sativa (Rice) Bran Wax), Copernicia Cerifera Cera (Copernicia Cerifera (Carnauba) Wax), Hydrogenated Olive Oil Stearyl Esters, Palmitic Acid, Shellac, Stearic Acid, Triethanolamine, Acacia Senegal Gum, Euphorbia Cerifera Cera (Euphorbia Cerifera (Candelilla) Wax), Phenoxyethanol, Polyvinyl Alcohol, VP/VA Copolymer, Aminomethyl Propanediol, Panthenol, Propylene Glycol, Ascorbyl Palmitate, Ethylhexylglycerin, Glycerin, Benzoic Acid, Myristoyl Pentapeptide-17, Sodium Benzoate, Iron Oxides (CI 77499).

**BABE**  
ORIGINAL

**BABE LASH®**

# ENRICHING EYELINER

**WARNING:** For external use only. Keep out of reach of children. Only apply with applicator. Do not share applicator. Secure lid tightly after each use. Do not dilute with any additive. Discontinue use immediately and contact your doctor if irritation or other side effects occur.



**INGREDIENTS:** Aqua (Water), Styrene/Acrylates Copolymer, Butylene Glycol, Glycerin, Caprylyl Glycol, PVP, Xanthan Gum, Sodium Dehydroacetate, Glyceryl Caprylate, Dipropylene Glycol, Disodium EDTA, Sodium Cetearyl Sulfate, Ethylhexylglycerin, Phenoxyethanol, EDTA, Benzoic Acid, Myristoyl Pentapeptide-17, Sodium Benzoate, Iron Oxides (CI 77499), D&C Black No. 2 (CI 77266).

**BABE  
ORIGINAL**

# BABE BROW

## AMPLIFYING SERUM

**WARNING:** For external use only. Keep out of reach of children. Only apply with applicator. Do not share applicator. Secure lid tightly after each use. Avoid getting in eyes; if so, immediately rinse with cool water. Do not use if pregnant or nursing, undergoing treatment for glaucoma or cancer, or if you have ever experienced conjunctivitis, dry eyes, eye infections, styes, irritation from other cosmetics applied in the eye area, or any eye-related disorder or illness. Discontinue use immediately if irritation occurs. If symptoms persist, seek medical attention.



**INGREDIENTS:** Aqua (Water), Glycerin, Polysorbate 20, Panthenol, Sodium Citrate, Leuconostoc/Radish Root Ferment Filtrate, Alanine, Alcohol, Arbutin, Arginine, Aspartic Acid, Biotin, Calcium Gluconate, Caprylyl Glycol, Chamomilla Recutita (Matricaria) Flower Extract, Disodium Phosphate, Ethylhexylglycerin, Gluconolactone, Glycine, Hexylene Glycol, Histidine, Hydrolyzed Glycosaminoglycans, Hydroxyethylcellulose, Isoleucine, Sodium Lactate, Magnesium Ascorbyl Phosphate, Panax Ginseng Root Extract, PCA, Valine, Phenylalanine, Polydextrose, Proline, Propylene Glycol, Ricinus Communis (Castor) Seed Oil, Serine, Vitis Vinifera (Grape) Seed Extract, Sodium Hyaluronate, Isopropyl Cloprostenate, Yeast Extract, Sodium PCA, Threonine, Tocopheryl Acetate, Triethanolamine, Phenoxyethanol, Sodium Benzoate, Sodium Metabisulfite.

**BABE**  
ORIGINAL

# BABE BROW

## VOLUMIZING BROW FILLER

DARK BROWN

**WARNING:** For external use only. Keep out of reach of children. Only apply with applicator. Do not share applicator. Secure lid tightly after each use. Do not dilute with any additive.



**INGREDIENTS:** Aqua (Water), Glycerin, Glyceryl Stearate, PEG-100 Stearate, Polypropylene, Magnesium Aluminum Silicate, Glyceryl Caprylate, 1,2-Hexanediol, Althaea Officinalis Root Extract, Benzoic Acid, Biotin, Biotinoyl Tripeptide-1, C13-14 Isoalkane, Caprylyl Glycol, Cellulose Gum, Citric Acid, Laureth-7, Myristoyl Pentapeptide-17, Panthenol, Phenethyl Alcohol, Phenoxyethanol, Polyacrylamide, Potassium Sorbate, Silica, Sodium Benzoate, Sodium PCA, Sodium Polyacrylate, Titanium Dioxide, Iron Oxides.

**BABE**  
ORIGINAL

# BABE BROW

## VOLUMIZING BROW FILLER

TAUPE

**WARNING:** For external use only. Keep out of reach of children. Only apply with applicator. Do not share applicator. Secure lid tightly after each use. Do not dilute with any additive.



**INGREDIENTS:** Aqua (Water), Glycerin, Glyceryl Stearate, PEG-100 Stearate, Polypropylene, Magnesium Aluminum Silicate, Glyceryl Caprylate, 1,2-Hexanediol, Althaea Officinalis Root Extract, Benzoic Acid, Biotin, Biotinoyl Tripeptide-1, C13-14 Isoalkane, Caprylyl Glycol, Cellulose Gum, Citric Acid, Laureth-7, Myristoyl Pentapeptide-17, Panthenol, Phenethyl Alcohol, Phenoxyethanol, Polyacrylamide, Potassium Sorbate, Silica, Sodium Benzoate, Sodium PCA, Sodium Polyacrylate, Titanium Dioxide, Iron Oxides.



**BABE**  
ORIGINAL

# BABE BROW

## VOLUMIZING BROW FILLER

BLACK

**WARNING:** For external use only. Keep out of reach of children. Only apply with applicator. Do not share applicator. Secure lid tightly after each use. Do not dilute with any additive.



**INGREDIENTS:** Aqua (Water), Glycerin, Glyceryl Stearate, PEG-100 Stearate, Polypropylene, Magnesium Aluminum Silicate, Glyceryl Caprylate, 1,2-Hexanediol, Althaea Officinalis Root Extract, Benzoic Acid, Biotin, Biotinoyl Tripeptide-1, C13-14 Isoalkane, Caprylyl Glycol, Cellulose Gum, Citric Acid, Laureth-7, Myristoyl Pentapeptide-17, Panthenol, Phenethyl Alcohol, Phenoxyethanol, Polyacrylamide, Silica, Sodium Benzoate, Sodium PCA, Sodium Polyacrylate, Iron Oxides.

**BABE**  
ORIGINAL

# BABE BROW

## VOLUMIZING BROW FILLER

CLEAR

**WARNING:** For external use only. Keep out of reach of children. Only apply with applicator. Do not share applicator. Secure lid tightly after each use. Do not dilute with any additive.



**INGREDIENTS:** Aqua (Water), Glycerin, Glyceryl Stearate, PEG-100 Stearate, Magnesium Aluminum Silicate, Glyceryl Caprylate, 1,2-Hexanediol, Althaea Officinalis Root Extract, Benzoic Acid, Biotin, Biotinoyl Tripeptide-1, C13-14 Isoalkane, Caprylyl Glycol, Cellulose Gum, Citric Acid, Laureth-7, Myristoyl Pentapeptide-17, Panthenol, Phenethyl Alcohol, Phenoxyethanol, Polyacrylamide, Polypropylene, Potassium Sorbate, Silica, Sodium Benzoate, Sodium PCA, Sodium Polyacrylate

**BABE**  
ORIGINAL

# BABE BROW

## VOLUMIZING BROW FILLER

AUBURN

**WARNING:** For external use only. Keep out of reach of children. Only apply with applicator. Do not share applicator. Secure lid tightly after each use. Do not dilute with any additive.



**INGREDIENTS:** Aqua (Water), Glycerin, Glyceryl Stearate, PEG-100 Stearate, Polypropylene, Magnesium Aluminum Silicate, Glyceryl Caprylate, 1,2-Hexanediol, Althaea Officinalis Root Extract, Benzoic Acid, Biotin, Biotinoyl Tripeptide-1, C13-14 Isoalkane, Caprylyl Glycol, Cellulose Gum, Citric Acid, Laureth-7, Myristoyl Pentapeptide-17, Panthenol, Phenethyl Alcohol, Phenoxyethanol, Polyacrylamide, Silica, Sodium Benzoate, Sodium PCA, Sodium Polyacrylate, Titanium Dioxide, Iron Oxides.

**BABE**  
ORIGINAL

# BABE GLOW

## PLUMPING LIP JELLY

CLEAR

**WARNING:** For external use only. Keep out of reach of children. Only apply with applicator. Do not share applicator. Secure lid tightly after each use. Do not dilute with any additive. You may experience a slightly intense tingle that can last between 5-10 minutes. Apply only within perimeter of lips. If applied on skin, a temporary redness may occur. If any discomfort is present, remove and discontinue use.



**INGREDIENTS:** Hydrogenated Polyisobutene, Pentaerythrityl Tetraistearate, Tridecyl Trimellitate, Ethylhexyl Palmitate, Caprylic/Capric Triglyceride, Butylene/Ethylene/Styrene Copolymer, Ethylene/Propylene/Styrene Copolymer, Menthoxypropanediol, Dipalmitoyl Hydroxyproline, Vanillyl Butyl Ether, Fragrance, Tribehenin, Palmitic Acid, Tocopheryl Acetate, Sorbitan Isostearate, Trihydroxystearin, BHT, Sodium Hyaluronate, Aqua (Water), Palmitoyl Tripeptide-1, Aluminum Oxide, Amorphophallus Konjac Root Powder.

**BABE**  
ORIGINAL

# BABE GLOW

## PLUMPING LIP JELLY

BLUSH

**WARNING:** For external use only. Keep out of reach of children. Only apply with applicator. Do not share applicator. Secure lid tightly after each use. Do not dilute with any additive. You may experience a slightly intense tingle that can last between 5-10 minutes. Apply only within perimeter of lips. If applied on skin, a temporary redness may occur. If any discomfort is present, remove and discontinue use.



**INGREDIENTS:** Hydrogenated Polyisobutene, Pentaerythrityl Tetraistearate, Tridecyl Trimellitate, Ethylhexyl Palmitate, Ethylene/Propylene/Styrene Copolymer, Caprylic/Capric Triglyceride, Butylene/Ethylene/Styrene Copolymer, Dipalmitoyl Hydroxyproline, Fragrance, Glucomannan, Lactic Acid, Limonene, Menthoxypropanediol, Palmitoyl Tripeptide-1, Sodium Hyaluronate, Sorbitan Isostearate, Tocopherol, Tocopheryl Acetate, Tribehenin, Trihydroxystearin, Vanillyl Butyl Ether, Titanium Dioxide, D&C Red No. 7, FD&C Yellow No. 5.

**BABE**  
ORIGINAL

# BABE GLOW

## PLUMPING LIP JELLY

MAUVE

**WARNING:** For external use only. Keep out of reach of children. Only apply with applicator. Do not share applicator. Secure lid tightly after each use. Do not dilute with any additive. You may experience a slightly intense tingle that can last between 5-10 minutes. Apply only within perimeter of lips. If applied on skin, a temporary redness may occur. If any discomfort is present, remove and discontinue use.



**INGREDIENTS:** Hydrogenated Polyisobutene, Pentaerythrityl Tetraisostearate, Tridecyl Trimellitate, Ethylhexyl Palmitate, Caprylic/Capric Triglyceride, Butylene/Ethylene/Styrene Copolymer, Ethylene/Propylene/Styrene Copolymer, Palmitoyl Tripeptide-1, Tribehenin, Tocopheryl Acetate, Sorbitan Isostearate, Dipalmitoyl Hydroxyproline, Palmitic Acid, Trihydroxystearin, Sodium Hyaluronate, Amorphophallus Konjac Root Powder, Menthoxypropanediol, Vanillyl Butyl Ether, Fragrance, Titanium Dioxide, FD&C Blue No. 1, D&C Red No. 7, FD&C Yellow No. 5.

**BABE**  
ORIGINAL

**BABE GLOW**

# PLUMPING LIP JELLY

RED

**WARNING:** For external use only. Keep out of reach of children. Only apply with applicator. Do not share applicator. Secure lid tightly after each use. Do not dilute with any additive. You may experience a slightly intense tingle that can last between 5-10 minutes. Apply only within perimeter of lips. If applied on skin, a temporary redness may occur. If any discomfort is present, remove and discontinue use.



**INGREDIENTS:** Hydrogenated Polyisobutene, Pentaerythrityl Tetraistearate, Tridecyl Trimellitate, Ethylhexyl Palmitate, Ethylene/Propylene/Styrene Copolymer, Caprylic/Capric Triglyceride, Butylene/Ethylene/Styrene Copolymer, Dipalmitoyl Hydroxyproline, Fragrance, Glucomannan, Lactic Acid, Limonene, Menthoxypropanediol, Palmitoyl Tripeptide-1, Sodium Hyaluronate, Sorbitan Isostearate, Tocopherol, Tocopheryl Acetate, Tribehenin, Trihydroxystearin, Vanillyl Butyl Ether, D&C Red No. 6, D&C Red No. 7, FD&C Yellow No. 5.

**BABE**  
ORIGINAL

**BABE GLOW**

# **BRIGHTENING GEL PATCHES**

**WARNING:** Use only as instructed. For external use only. Keep out of reach of children.



**INGREDIENTS:** Aqua (Water, Glycerin, Dipropylene Glycol, Sodium Polyacrylate, Agar, Polyacrylic Acid, Xanthan Gum, Phenoxyethanol, Disodium EDTA, Tartaric Acid, Polysorbate 80, Niacinamide, Cellulose Gum, Butylene Glycol, Oryza Sativa (Rice) Extract, Panax Ginseng Root Extract, Chenopodium Quinoa Seed Extract, Daucus Carota Sativa (Carrot) Root Extract, Glycine Soja (Soybean) Seed Extract, Fragrance, Aluminum Glycinate.



**BABE**  
ORIGINAL

**BABE LASH®**

# LIP MASK

**WARNING:** For external use only. Keep out of reach of children. Secure lid tightly after each use. Do not dilute with any additive. Discontinue use immediately and contact your doctor if irritation or other side effects occur.



**INGREDIENTS:** Hydrogenated Polyisobutene, Diisostearyl Malate, Tridecyl Trimellitate, Polybutene, Isostearyl Alcohol, Synthetic Wax, Ethylene/Propylene/Styrene Copolymer, Butylene/Ethylene/Styrene Copolymer, Tocopheryl Acetate, Dehydroacetic Acid, Rosa Canina Fruit Oil, Ricinus Communis (Castor) Seed Oil, Sodium Hyaluronate, Hydrogenated Castor Oil, D&C Red No. 7, FD&C Yellow No. 5.

**BABE**  
ORIGINAL

# BABE LOCKS

## DENSIFYING HAIR SERUM

**WARNING:** For external use only. Keep out of reach of children. Only apply with applicator. Do not share applicator. Secure lid tightly after each use. Avoid getting in eyes; if so, immediately rinse with cool water. Discontinue use immediately if irritation occurs. If symptoms persist, seek medical attention.



**INGREDIENTS:** Aloe Barbadensis Leaf Juice, Water, Butylene Glycol, Glycerin, Propanediol, Pentylene Glycol, Xylitylglucoside, Argan Oil Glycereth-8 Esters, Fragrance, Ethyltrimonium Chloride Methacrylate/Hydrolyzed Wheat Protein Copolymer, Caffeine, Cetyl Betaine, Anhydroxylitol, Benzyl Alcohol, Gluconolactone, Dimethyl Sulfone, Hydroxypropyl Guar Hydroxypropyltrimonium Chloride, Xylitol, Calendula Officinalis Flower Extract, Hydrolyzed Soy Protein, Sclerotium Gum, Sodium Benzoate, Pisum Sativum Extract, Arginine, Glucose, Lactic Acid, Sodium Phytate, Potassium Sorbate, Benzoic Acid, Vanilla Planifolia Fruit Extract, Phenoxyethanol, Ppg-26-Buteth-26, Triticum Vulgare Germ Extract, Glycine Soja Germ Extract, Sorbic Acid, Peg-40 Hydrogenated Castor Oil, Peg-60 Hydrogenated Castor Oil, Biotin, Dextran, Disodium Edta, Helianthus Annuus Seed Oil, Chamomilla Recutita Flower Extract, Olea Europaea Fruit Oil, Ricinus Communis Seed Oil, Acetyl Tetrapeptide-3, Glycine, Larix Europaea Wood Extract, Trifolium Pratense Flower Extract, Scutellaria Baicalensis Root Extract, Rosmarinus Officinalis Leaf Extract, Chenopodium Quinoa Seed Extract, Daucus Carota Sativa Extract, Glycine Max Seed Extract, Lactobacillus/Panax Ginseng Root Extract Ferment Filtrate, Oryza Sativa Bran Oil Extract, Calcium Gluconate, Octapeptide-2, Sodium Metabisulfite, Tocopherol, Phenethyl Alcohol, Caprylyl Glycol, Ceramide NG, Glycine Soja Oil, Apigenin, Hydrogenated Phosphatidylcholine, Trisodium Ethylenediamine Disuccinate, Oleanolic Acid, Camellia Sinensis Leaf Extract, Zinc Chloride, Biotinoyl Tripeptide-1, Sodium Oleate.

**BABE  
ORIGINAL**

# BABE LOCKS

## DENSIFYING SHAMPOO

**WARNING:** For external use only. Secure lid tightly after each use. Avoid getting in eyes; if so, immediately rinse with cool water. Discontinue use immediately if irritation occurs. If symptoms persist, seek medical attention.



**INGREDIENTS:** Water, Sodium Methyl Cocoyl Taurate, Cocamidopropyl Betaine, Decyl Glucoside, Sodium Lauroamphoacetate, Coco-Glucoside, Glyceryl Oleate, Propanediol, Phenoxyethanol, Fragrance, Hydrolyzed Jojoba Esters, Aloe Barbadensis Leaf Juice, Polyquaternium-7, Potassium Sorbate, Ethylhexylglycerin, Ricinus Communis Seed Oil, Citric Acid, Amaranthus Caudatus Seed Extract, Hydrolyzed Rice Protein, C13-15 Alkane, Helianthus Annuus Seed Oil, Rosmarinus Officinalis Extract, Olea Europaea Fruit Oil, Jojoba Esters, Glycerin, Centella Asiatica Extract, Sodium PCA, Sodium Lactate, Caffeine, Limnanthes Alba Seed Oil, Panthenol, Sodium Benzoate, Arginine, Aspartic Acid, Ceramide NG, PCA, Butylene Glycol, Glycine, Alanine, Hydrolyzed Collagen, Serine, Valine, Tocopherol, Isoleucine, Proline, Threonine, Serenoa Serrulata Fruit Extract, Hydrogenated Palm Glycerides Citrate, Vitis Vinifera Seed Extract, Histidine, Phenylalanine, Biotin.

**BABE  
ORIGINAL**

# BABE LOCKS

## DENSIFYING CONDITIONER

**WARNING:** For external use only. Secure lid tightly after each use. Avoid getting in eyes; if so, immediately rinse with cool water. Discontinue use immediately if irritation occurs. If symptoms persist, seek medical attention.



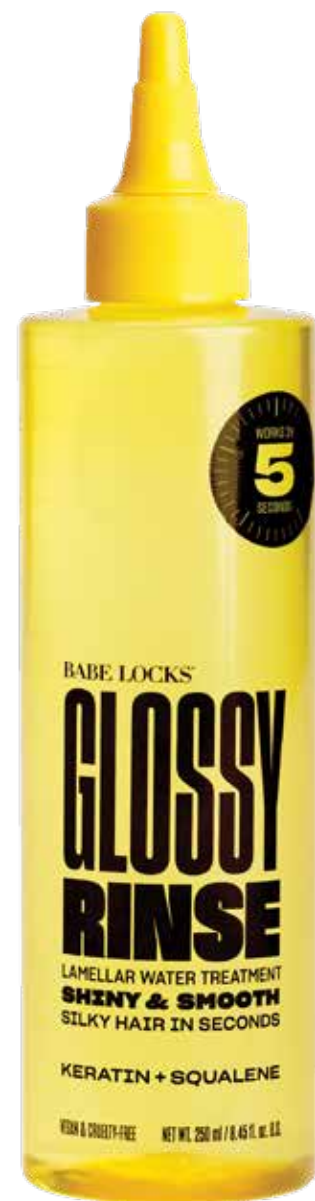
**INGREDIENTS:** Water, Cetearyl Alcohol, Behentrimonium Chloride, Glycerin, Coco-Caprylate, Propanediol, Fragrance, Phenoxyethanol, C13-15 Alkane, Limnanthes Alba Seed Oil, Copper Tripeptide-1, Hydrolyzed Jojoba Esters, Ethylhexylglycerin, Amaranthus Caudatus Seed Extract, Hydrolyzed Rice Protein, Aloe Barbadensis Leaf Juice, Panthenol, Polyquaternium-10, Ricinus Communis Seed Oil, Sodium PCA, Sodium Lactate, Caffeine, Centella Asiatica Extract, Helianthus Annuus Seed Oil, Rosmarinus Officinalis Extract, Simmondsia Chinensis Seed Oil, Sodium Hyaluronate, Olea Europaea Fruit Oil, Arginine, Jojoba Esters, Aspartic Acid, PCA, Sodium Benzoate, Glycine, Alanine, Ceramide NG, Serine, Valine, Isoleucine, Proline, Threonine, Serenoa Serrulata Fruit Extract, Histidine, Phenylalanine, Vitis Vinifera Seed Extract, Citric Acid.

**BABE  
ORIGINAL**

# BABE LOCKS

## GLOSSY RINSE

**WARNING:** For external use only. Use only as directed. Keep out of reach of children. Do not apply to damaged or irritated skin. Avoid getting in eyes; if so, immediately rinse with cool water. Discontinue use immediately if irritation occurs. If symptoms persist, seek medical attention.



**INGREDIENTS:** Propylene Glycol, Water, Alcohol, Myristyl Alcohol, Fragrance, Polysorbate 20, Cetrimonium Chloride, Phenoxyethanol, Behentrimonium Chloride, C13-15 Alkane, Ethylhexylglycerin, Denatonium Benzoate, Xylitylglucoside, Anhydroxylitol, Hydrolyzed Wheat Protein, Hydrolyzed Corn Protein, Hydrolyzed Soy Protein, Xylitol, Glycerin, Glucose, Chamomilla Recutita Flower Extract, Potassium Sorbate, Sodium Benzoate.