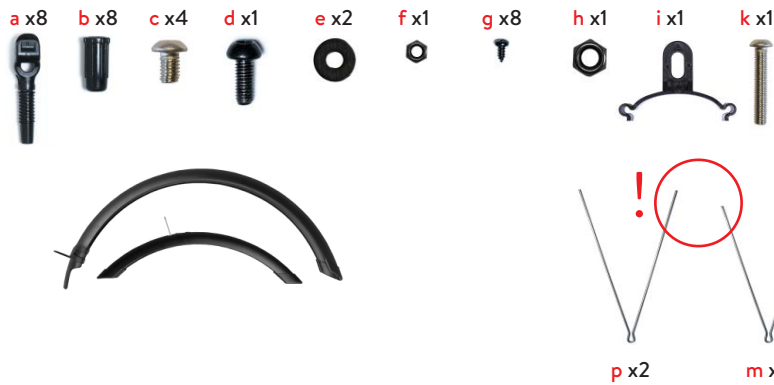
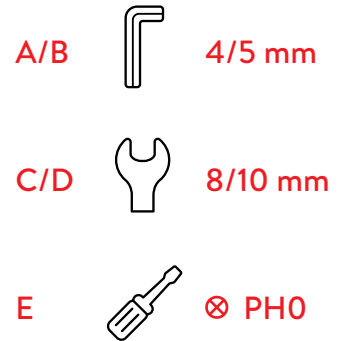


Kit



Tools



VORNE • FRONT



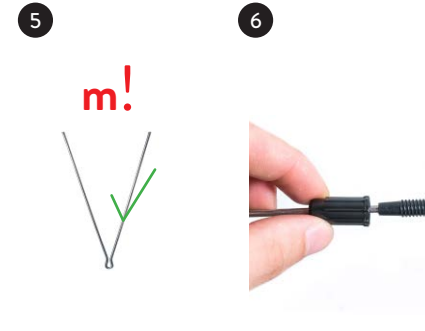
1 anheben & durchführen lift up & position



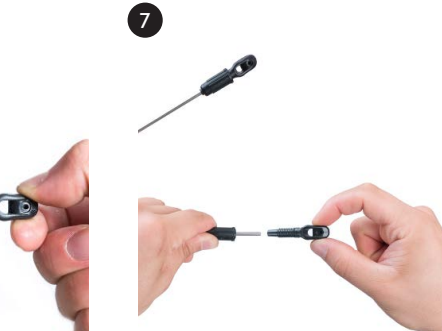
3 h + k + festziehen mit / tighten with B



4 festziehen mit / tighten with B + D



5 2x m



6 4x: m + a + b



7 4x: m + a + b

8 links & rechts / left & right



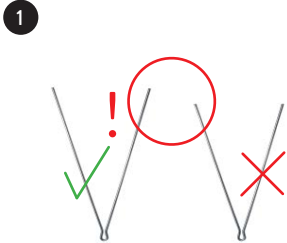
9 2x c + links & rechts / left & right +
festziehen mit / tighten with A



10 4x g + links & rechts / left & right +
festziehen mit / tighten with E



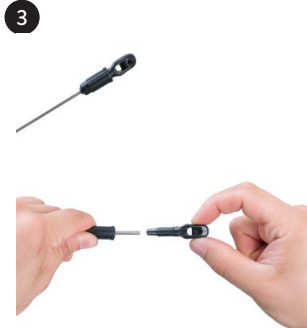
HINTEN • REAR



2x p



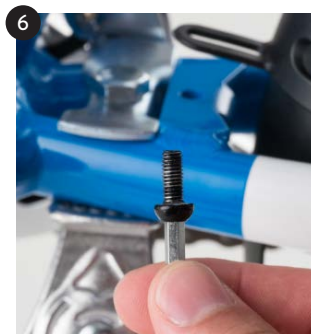
4x: p + a + b



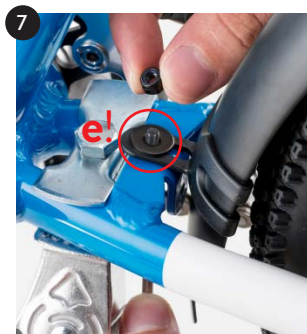
links & rechts / left & right



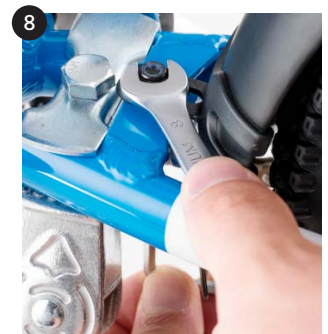
durchschieben / push through



d + Werkzeug / tool A



d + e + f



festziehen mit / tighten with A + C



i



e + Werkzeug / tool A



2x c + anziehen mit / tighten with A +
links & rechts / left & right



ausrichten / align



4x g + anziehen mit / tighten with E +
links & rechts / left & right